



Article scientifique

Article

2023

Published version

Open Access

This is the published version of the publication, made available in accordance with the publisher's policy.

AF641, AI954 and AW954 antibodies label the endoplasmic reticulum by immunofluorescence

Herren, Margaux Alexandra Inès; Leyss, Simon; Liborová, Karolína; Maître, Marie; Manghetti, Livia Sarah; Mencier, Lucie Louise; Moudarres, Lana; Najand, Gaëlle Aude; Roch, Laura; Rütsche, Audrey; Schwitzguebel, Valérie; Seddiki, Wissem; Soulie, Paola Maria Flavia Noëlle; Anagbogu, Nneka Mukaosulu [and 13 more]

How to cite

HERREN, Margaux Alexandra Inès et al. AF641, AI954 and AW954 antibodies label the endoplasmic reticulum by immunofluorescence. In: Antibody reports, 2023, vol. 6, n° 1, p. e1134. doi: 10.24450/journals/abrep.2023.e1134

This publication URL: <https://archive-ouverte.unige.ch/unige:167714>

Publication DOI: [10.24450/journals/abrep.2023.e1134](https://doi.org/10.24450/journals/abrep.2023.e1134)

AF641, AI954 and AW954 antibodies label the endoplasmic reticulum by immunofluorescence

Margaux Herren¹, Simon Leyss¹, Karolina Liborova¹, Marie Maître¹, Livia Manghetti¹, Lucie Mencier¹, Lana Moudarres¹, Gaele Najand¹, Laura Roch¹, Audrey Ruetsche¹, Valerie Schwitzguebel¹, Wissem Seddiki¹, Paola Soulie¹, Nneka Anagbogu¹, Kenza Bennani¹, Elise Brun¹, Hannah Butterworth¹, Jennifer Carry¹, Soyan Dawit¹, Meg-Mai-Ly Diep¹, Odyssee Ferrillo¹, Maxime Guertler¹, Catalina Gureu¹, François Prodon², Stéphane Durual³, Tania Jauslin¹, Cyril Guilhen¹

¹ Bachelor in Biomedical Sciences, Faculty of Medicine, University of Geneva, 1 rue Michel Servet, CH-1211, Geneva, Switzerland

² Bioimaging Core Facility, Faculty of Medicine, University of Geneva, 1 rue Michel Servet, CH-1211 Geneva, Switzerland

³ University Clinics of Dental Medicine, University of Geneva, 1 rue Michel Servet, CH-1211, Geneva, Switzerland

Abstract

The AF641, AI954 and AW954 recombinant antibodies detect different markers of the endoplasmic reticulum by immunofluorescence in HEK293 cells.

Introduction

BiP (binding immunoglobulin protein, also known as GRP78) and endoplasmin are molecular chaperones localized in the endoplasmic reticulum (ER). These proteins play critical roles in the folding of proteins in the secretory pathway (Melnick *et al.*, 1994; Csermely *et al.*, 1995). A KDEL sequence at the luminal C-terminal end of BiP, endoplasmin, and other proteins ensures their specific localization in the ER (Munro and Pelham., 1987). Here, we tested the ability of six recombinant antibodies to detect different markers of the ER by immunofluorescence in YFP-KDEL transfected HEK293 cells. Among the tested antibodies, AF641, AI954, AF650 and AF637 were reported to detect the human BiP protein (Uniprot#P11021). The KDEL motif was recognized by the antibody AW954 and the human endoplasmin (Uniprot #P14625) by AP498.

Materials & Methods

Antibodies: ABCD_AF637, ABCD_AF641, ABCD_AF650, ABCD_AI954, ABCD_AP498 and ABCD_AW954 antibodies (ABCD nomenclature, <https://web.expasy.org/abcd/>) were produced by the Geneva Antibody Facility (<http://www.unige.ch/medecine/antibodies/>) as mini-antibodies with the antigen-binding portion fused to a rabbit IgG Fc. (see Table 1 for clone names and references). HEK293 suspension cells (growing in HEK TF medium, Xell#861-0001, supplemented with 0.1% Pluronic F68, Sigma#P1300) were transiently transfected with a vector coding for the scFv-Fc of each antibody. Supernatants (see Table 1 for individual yields) were collected after 4 days.

Antigen: HEK293 cells (growing in DMEM, Gibco#11960044, supplemented with 10% FBS) were transiently transfected 2 days before the experiment with a vector coding for the full-length yellow fluorescent protein (YFP) fused to the KDEL motif at the carboxy-terminal position.

ABCD	Clone	Reference	Yield (mg/L)	Target
AF637	GC-20	Naoki <i>et al.</i> , 2010	<5	BiP
AF641	B4	Pasqualini <i>et al.</i> , 2018	20	
AF650	2D6F9	Hallahan and Yan, 2017	20	
AI954	MAB159	Gill and Liu, 2018	<5	
AP498	H11B	Arnold-Shild <i>et al.</i> , 2000	120	Endoplasmin
AW954	VHH 5	Klooster <i>et al.</i> , 2009	10	KDEL

Table 1: Clone number, reference, production yields and target for the antibodies used in this study.

Protocol

The whole procedure was carried out at room temperature. Transfected HEK293 cells were fixed with PBS + 4% paraformaldehyde (w/v) (Applchem#A3013) for 30 min, and blocked with PBS + 40 mM ammonium chloride (NH₄Cl) (Applchem#A3661) for 5 min. Cells were then permeabilized in PBS + 0.1% Triton X-100 (v/v) for 5 min, washed once (5 min) with PBS + 0.2% (w/v) BSA (PBS-BSA), and incubated for 20 min with the recombinant antibodies (5 mg/L in PBS-BSA). After 3 washes (5 min) with PBS-BSA, cells were incubated for 30 min in PBS-BSA with secondary goat anti-rabbit IgG conjugated to AlexaFluor-647 (1:400, Thermofisher #A11034). After 3 washes (5 min) with PBS-BSA, cells were mounted on slides (Menzel-Gläser, 76x26 mm) with Mowiol (Hoechst) + 2.5% (w/v) DABCO (Fluka#33480). Pictures were taken using a Zeiss LSM800 confocal microscope, with a 63x Neofluar oil immersion objective

Results

Since the KDEL motif acts as an ER targeting motif, cells expressing YFP-KDEL were used to visualize the ER compartment (Fig.1). The signal observed with AW954, AF641 and AI954 co-localized with the overexpressed YFP-KDEL protein demonstrating that these antibodies specifically detected the ER compartment. (Fig. 1). In the experimental conditions used in this study, no signal was observed with AF637, AF650 and AP498 antibodies or when the primary antibody was omitted. The absence of signal with AF637 might be due to the fact that this antibody is poorly produced. Note that the use of different experimental conditions (e.g. a different fixation procedure) may modify strongly the reactivity of antibodies.

References

Arnold-Schild D, Kleist C, Welschof M, Opelz G, Rammensee HG, Schild H, et al. One-Step Single-Chain Fv Recombinant Antibody-based Purification of gp96 for Vaccine Development. *Cancer Research*. 2000; 60(15): 4175-8. PMID: 10945626.

Csermely P, Miyata Y, Schnaider T, Yahara I. Autophosphorylation of grp94 (Endoplasmic). *Journal of Biological Chemistry*. 1995; 270(11): 6381-8. PMID: 7890776.

Gill P, Liu R. Antibodies that bind cell surface GRP78 and their use for detection of cancer. Unites States, US20180094054. 2018.

Hallahan D, Yan H. Antibodies to GRP78. Unites States, US20170298142. 2017.

Klooster R, Eman MR, le Duc Q, Verheesen P, Verrips CT, Roovers RC, et al. Selection and characterization of KDEL-specific VHH antibody fragments and their application in the study of ER resident protein expression. *Journal of Immunological Methods*. 2009; 342(1): 1-12. PMID: 19041652.

Melnick J, Dul JL, Argon Y. Sequential interaction of the chaperones BiP and GRP94 with immunoglobulin chains in the endoplasmic reticulum. *Nature*. 1994; 370(6488): 373-5. PMID: 7913987.

Munro S, Pelham HRB. A C-terminal signal prevents secretion of luminal ER proteins. *Cell*. 1987; 48(5): 899-907. PMID: 3545499.

Naoki K. Pharmaceutical composition comprising anti-GRP78 antibody as active ingredient. Unites States, US20100041074. 2010.

Pasqualini R, Arap W, Staquicini F, Ferrara F, D'Angelo S, Bradbury A. EPHA5 and GRP78 binding antibodies and uses thereof and selection of phage-displayed accessible recombinant targeted antibodies. World. WO2018057703. 2018.

Conflict of interest

The authors declare no conflict of interest.

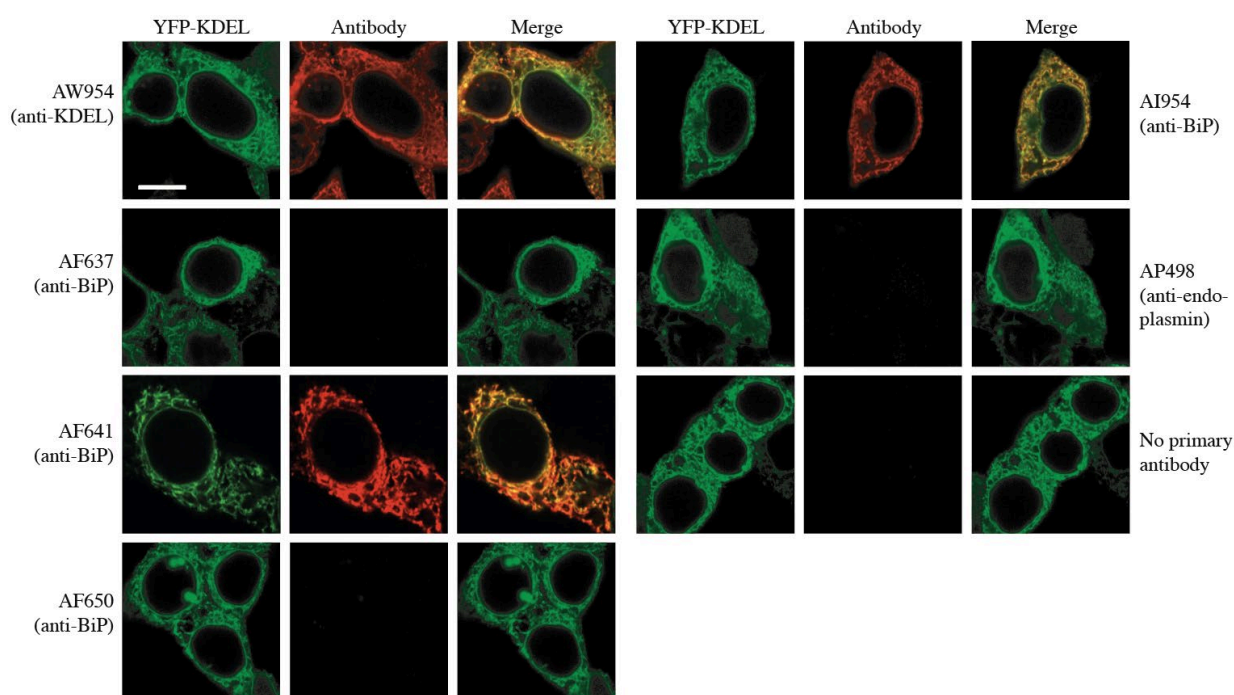


Fig. 1. AW954, AF641 and AI954 specifically label the endoplasmic reticulum in transfected HEK293 cells expressing the YFP-KDEL protein. No signal was observed with AF637, AF650 and AP498 antibodies, or when the primary antibody was omitted. Scale bar: 10 μ m.