



Article scientifique

Article

2024

Published version

Open Access

This is the published version of the publication, made available in accordance with the publisher's policy.

Impact of intensive prone position therapy on outcomes in intubated patients with ARDS related to COVID-19

Le Terrier, Christophe; Walter, Thaïs; Lebbah, Said; Hajage, David; Sigaud, Florian; Guérin, Claude; Desmedt, Luc; Primmaz, Steve; Jousselein, Vincent; Della Badia, Chiara; Ricard, Jean-Damien; Pugin, Jérôme; Terzi, Nicolas

Collaborators: Suh, Noémie

Erratum exists for this publication. Please refer to the record <https://archive-ouverte.unige.ch/unige:181947>

How to cite

LE TERRIER, Christophe et al. Impact of intensive prone position therapy on outcomes in intubated patients with ARDS related to COVID-19. In: Annals of intensive care, 2024, vol. 14, n° 1, p. 100. doi: 10.1186/s13613-024-01340-z

This publication URL: <https://archive-ouverte.unige.ch/unige:181947>


Publication DOI: [10.1186/s13613-024-01340-z](https://doi.org/10.1186/s13613-024-01340-z)

RESEARCH

Open Access



Impact of intensive prone position therapy on outcomes in intubated patients with ARDS related to COVID-19

Christophe Le Terrier^{1*} , Thaïs Walter², Said Lebbah³, David Hajage³, Florian Sigaud⁴, Claude Guérin⁵, Luc Desmedt⁶, Steve Primmaz¹, Vincent Jousselein⁷, Chiara Della Badia¹, Jean-Damien Ricard^{8,9}, Jérôme Pugin¹, Nicolas Terzi⁷ and COVID-ICU Group on behalf of the REVA Network and the COVID-ICU Investigators

Abstract

Background Previous retrospective research has shown that maintaining prone positioning (PP) for an average of 40 h is associated with an increase of survival rates in intubated patients with COVID-19-related acute respiratory distress syndrome (ARDS). This study aims to determine whether a cumulative PP duration of more than 32 h during the first 2 days of intensive care unit (ICU) admission is associated with increased survival compared to a cumulative PP duration of 32 h or less.

Methods This study is an ancillary analysis from a previous large international observational study involving intubated patients placed in PP in the first 48 h of ICU admission in 149 ICUs across France, Belgium and Switzerland. Given that PP is recommended for a 16-h daily duration, intensive PP was defined as a cumulated duration of more than 32 h during the first 48 h, whereas standard PP was defined as a duration equal to or less than 32 h. Patients were followed-up for 90 days. The primary outcome was mortality at day 60. An Inverse Probability Censoring Weighting (IPCW) Cox model including a target emulation trial method was used to analyze the data.

Results Out of 2137 intubated patients, 753 were placed in PP during the first 48 h of ICU admission. The intensive PP group ($n=79$) had a median PP duration of 36 h, while standard PP group ($n=674$) had a median of 16 h during the first 48 h. Sixty-day mortality rate in the intensive PP group was 39.2% compared to 38.7% in the standard PP group ($p=0.93$). Twenty-eight-day and 90-day mortality as well as the ventilator-free days until day 28 were similar in both groups. After IPCW, there was no significant difference in mortality at day 60 between the two-study groups (HR 0.95 [0.52–1.74], $p=0.87$ and HR 1.1 [0.77–1.57], $p=0.61$ in complete case analysis or in multiple imputation analysis, respectively).

Conclusions This secondary analysis of a large multicenter European cohort of intubated patients with ARDS due to COVID-19 found that intensive PP during the first 48 h did not provide a survival benefit compared to standard PP.

Keywords Acute respiratory distress syndrome, Intubation, COVID-19, Mortality, Intensive prone position, Intensive care unit

*Correspondence:

Christophe Le Terrier

Christophe.leterrier@hcuge.ch

Full list of author information is available at the end of the article



© The Author(s) 2024, corrected publication 2024. **Open Access** This article is licensed under a Creative Commons Attribution 4.0 International License, which permits use, sharing, adaptation, distribution and reproduction in any medium or format, as long as you give appropriate credit to the original author(s) and the source, provide a link to the Creative Commons licence, and indicate if changes were made. The images or other third party material in this article are included in the article's Creative Commons licence, unless indicated otherwise in a credit line to the material. If material is not included in the article's Creative Commons licence and your intended use is not permitted by statutory regulation or exceeds the permitted use, you will need to obtain permission directly from the copyright holder. To view a copy of this licence, visit <http://creativecommons.org/licenses/by/4.0/>.

Introduction

Prone positioning (PP) for intubated patients with acute respiratory distress syndrome (ARDS) has been widely implemented during the COVID-19 pandemic [1]. In large cohorts of mechanically ventilated patients, approximately 70% of patients were placed in PP regardless of the severity of their ARDS [1, 2], compared to 30% during the pre-pandemic period [3]. Previous research has shown that early implementation of multiple 16-h sessions of PP in patients with moderate to severe ARDS was associated with reduced mortality, leading to updated French guidelines for managing ARDS patients [4, 5]. However, the duration of PP during the pandemic varied widely among patients, influenced by both patients' response and the availability of trained ICU staff to turn patients to the supine position [6]. However, in a recent study, PP sessions lasting 24 h or more and implemented in patients with PaO₂/FiO₂ ratio greater than 150 mmHg were associated with increased survival in COVID-19 related ARDS [7]. It was therefore recently suggested that a longer duration of prone therapy may further improve ARDS patients' outcome, but additional data with longer PP duration of PP are still awaited [8]. Moreover, PP increases the workload of ICU staff and is associated with certain risks, including pressure sores, potential hindrance to enteral nutrition and a higher rate of catheter-related blood stream infection [8]. Those risks potentially increase with the duration of each PP session. Consequently, the optimal duration of the PP in ARDS remains unknown.

The objective of this ancillary study was to assess the outcomes of intubated patients with COVID-19 related ARDS based on the cumulated duration of prone position during the first 48 h following ICU admission, using a large international cohort [2].

Study design and methods

Study design and patients

This study was an ancillary analysis of the ProneCOVID study using the COVID-ICU cohort [2, 9]. The ProneCOVID study was a previous analysis of a prospective, multicenter observational cohort study of 149 ICUs from 138 hospitals conducted across three European countries (France, Belgium and Switzerland) [9]. The ethical committees of Switzerland (BASEC #: 2020-00704), of the French Intensive Care Society (CE-SRLF 20-23) and of Belgium (2020-294) approved the previous study, and all patients or relatives had given their consent to be included in the COVID-ICU cohort.

The COVID-ICU cohort involved all consecutive patients ≥ 16 years old admitted to ICU from February 25, 2020, to May 4, 2020, with a recorded vital status at day 90, totaling 4643 patients. Laboratory confirmation

for SARS-CoV-2 was defined as a positive result of real-time reverse transcriptase-polymerase chain reaction (RT-PCR) assay from either nasal or pharyngeal swabs, and/or lower respiratory tract aspirates. In the ProneCOVID study, a total of 2137 patients who were intubated and mechanically ventilated with a PaO₂/FiO₂ ratio < 300 mmHg and PEEP > 5 cmH₂O, and no therapeutic limitations, within the first 24 h of ICU admission were included. This secondary analysis focused on the subgroup of intubated patients who were consecutively turned prone during the first 48 h after ICU admission. Patients who experienced PP only after 48 h, as well as patients for whom the time of proning was not reported were excluded. The study followed the STROBE statement for reporting observational studies [10].

Patients were categorized based on the cumulative duration of PP in hours during the first 48 h reflecting the total exposure to PP in hours from one or more sessions. Given that PP is now recommended for a 16-h daily duration for ARDS patients with PaO₂/FiO₂ ratio lower than 150 mmHg [4, 5], patients who were placed in PP for more than 32 h during this period of 48 h were assigned to the intensive PP group, while those who were placed in PP for 32 h or less were assigned to the standard PP group. The first 48 h after ICU admission were chosen in order to minimize the potential immortal time bias and to approximate an intention-to-treat approach similar to a randomized trial. Additionally, based on previous work, the management of ARDS during these initial 48 h period may be crucial for patients' outcome. However, a second analysis including all patients experiencing PP during ICU stay was also performed and provided in Additional file 1. As previously described in COVID ICU cohort, decisions regarding indication for invasive mechanical ventilation and mechanical ventilation settings were left to the discretion of the clinicians at each participating centers. There was no information available regarding whether patients remained in PP continuously or were turned back to the supine position daily, only the duration of each individual session in the prone position was recorded.

Data collection

Consistent with the previously published study [2], a standardized electronic case report form was completed each day at 10 a.m. by the study investigators. Baseline characteristics were collected at ICU admission: age, sex, body mass index (BMI), active smoking, Simplified Acute Physiology Score (SAPS) II score, Sequential Organ Failure Assessment (SOFA), treated hypertension, diabetes, long term corticosteroids, immunodeficiency, Clinical Frailty Scale, the date of the first symptom, and dates of the hospital and ICU admissions. All investigators were

asked to provide the lowest arterial partial pressure of oxygen (PaO_2) at Day-1 after intubation and the corresponding fraction of oxygen inspired (FiO_2) to calculate $\text{PaO}_2/\text{FiO}_2$ ratio and to categorized severity ARDS according to the Berlin definition [11].

The initial 48-h period is defined as the time from 10 a.m. on the morning following admission to the ICU until 10 a.m. 48 h later (Additional data, Figure 1). Static compliance was defined by dividing the tidal volume by the driving pressure. The driving pressure was calculated by subtracting plateau pressure from positive end-expiratory pressure (PEEP). All biological data were collected at ICU admission. Proved concurrent bacterial pneumonia was defined by a positive bacterial culture at ICU admission in either a bronchoalveolar lavage sample, or in a blind protected specimen brush distal, or in endotracheal aspirates.

The primary outcome was mortality at day 60. Secondary outcomes included 28-day and 90-day mortality, ventilator free-days until day 28, need for extracorporeal membrane oxygenation (ECMO) and renal replacement therapy (RRT), use of neuromuscular blockers and inhaled nitric oxide. The ventilator-free days until day 28 was defined as the number of days alive and free from invasive mechanical ventilation for at least 48 consecutive hours. If the patient was re-intubated within 48 h of the extubation the variable was treated as zero ventilator-free days; if re-intubated after 48 h, the 48 h period was counted as ventilator-free days. Patients discharged from the ICU before 28 days were considered alive and free from invasive mechanical ventilation at 28 days. Nonsurvivors at day 28 were considered to have zero ventilator-free days [12]. The static compliance, the SOFA score and the $\text{PaO}_2/\text{FiO}_2$ ratio were also evaluated at day-3, day-5, day-7, day-14, day-21 and day-28.

Statistical analysis

Characteristics of patients were described as counts and percentages for categorical variables, and as median and interquartile range (IQR) for quantitative variables. Categorical variables were compared using Chi-square or Fisher's exact test, and quantitative variables were compared using Student's *t*-test or Wilcoxon's rank-sum test. Kaplan–Meier overall survival curves until day 60 were computed.

The primary endpoint was the 60-day mortality according to the prone therapy strategy during the first 48-h of ICU stay, i.e. a standard or an intensive therapy. To assess the prone therapy strategy effect on 60-day mortality, a target trial emulation framework was used, according to the cloning-censoring and weighting method. This method, which eliminates the risk of immortal time bias, has been well described elsewhere [13, 14].

At the beginning of the follow-up, all intubated patients could belong to either the intensive PP group (cumulative duration of $\text{PP} > 32$ h) or the standard PP group (cumulative duration of $\text{PP} \leq 32$ h) at the end of day 2. Thus, firstly, we created two clones of each patient and assigned each clone to a different strategy: the intensive PP strategy, or standard PP strategy. This ensures that all patients were included in both "arms" of the emulated trial, regardless of their status at the end of 48 h (intensive PP or not). As a result, the baseline characteristics are identical in both "arms", eliminating any baseline confounding. Secondly, we censored clones that were non-adherent to their assigned treatment strategy during follow-up (e.g., cumulated $\text{PP} > 32$ h at Day 2 for a clone included in the Standard "arm", cumulated $\text{PP} \leq 32$ h for a clone included in the Intensive "arm"). Thirdly, this informative censoring was addressed using inverse-probability-of-censoring weights (IPCW), in which uncensored observations are up-weighted to represent censored observations with similar characteristics. The probability of not being censored was estimated using a Cox model, with the following baseline variables: age (≥ 65 years vs. < 65 years), sex (female vs. male), admission period to intensive care unit (28 March vs. 29 March) (28 March being the median admission period), time between first symptoms and admission date (≥ 8 days vs. < 8 days) (8 being the median time), frailty scale (≥ 4 vs. < 4), body mass index (≥ 30 kg/m^2 vs. < 30 kg/m^2), arterial hypertension status (yes vs. no), diabetes status (yes vs. no), median SOFA score (≥ 11 vs. < 11), $\text{PaO}_2/\text{FiO}_2$ ratio (< 150 vs. ≥ 150 mmHg), static compliance (< 30 vs. ≥ 30), lymphopenia (lymphocytes < 1 vs. lymphocytes ≥ 1 G/L). Finally, the analysis of 60-day mortality using a Cox model weighted on IPCW was performed to estimate Hazard ratio, and its 95% confidence interval, associated to intensive PP and weighted Kaplan Meier curves. This analysis was performed on the complete cases data set, and a sensitivity analysis was performed using multiple imputations due to missing data, considering a maximum threshold of 30%. Multiple imputation was realized according to Vesin et al. [15], including all variables introduced in the analysis and the primary endpoint. The number of available data for each variable included in the analysis was provided in Additional file, Table 1. Proportional hazard assumption was assessed by inspecting the scaled Schoenfeld residuals and Harrel's test [16]. We performed a subgroup analysis of mortality at day-60 according to $\text{PaO}_2/\text{FiO}_2$ ratio at day-1 ($<$ or ≥ 150 mmHg), using the same approach in each subgroup, being aware of the limits for this analysis which remained exploratory.

All analyses were performed at a two-sided α level of 5% and conducted with R version 4.1.1 (R Foundation for Statistical Computing, Vienna, Austria).

Results

Characteristics of ICU intubated patients

ProneCOVID study enrolled 2137 intubated patients. In this secondary analysis, 753 patients met the inclusion criteria and were retrospectively analyzed, as shown in Fig. 1. The median age was 63 [55–70] years old. Approximately half of patients were obese ($BMI \geq 30 \text{ kg/m}^2$) and a treated for hypertension, and nearly one third had diabetes mellitus. Patients in the standard PP group were more likely to be men (76% vs. 58%, $p = 0.001$). All other characteristics at baseline were similar between the two groups and there were no group differences in severity of illness at admission using SOFA and SAPS II scores, or in the frailty clinical scale. Regarding ventilatory features, the median duration between ICU admission and the initiation of invasive mechanical ventilation was 2.3 [0.5–8.6] hours. The lowest PaO_2/FiO_2 ratio on Day-1 was 128 [88–174] mmHg and 37% of patients had a PaO_2/FiO_2 ratio of 150 mmHg or greater. Patients were ventilated with a median tidal volume of 6.1 [5.8–6.6] mL/kg and a

median PEEP at 12 [10–14] cmH_2O . All other baseline characteristics of patients are summarized in Table 1.

After the IPCW adjustment, results were analyzed in both complete case analysis including 354 patients and in multiple imputation analysis with all baseline population of 753 patients. In both weighted cohorts, there were no differences in key variables between prone therapy strategies (Tables 1 and 2).

Prone position therapy

Among the 753 patients analyzed, 79 (10.5%) patients were classified in the intensive PP group with a median cumulative duration of PP of 36 [34–39] hours in the first 48 h. In the intensive group, no patients had a cumulative PP duration of 48 h, as illustrated in Fig. 2, and in Additional file, Figure 2. On the other hand, 89.5% of patients, corresponding to 674 patients, were classified in the standard PP group with a median cumulative duration of PP of 16 [15–21] hours. In this group, less than 10% of patients experienced a cumulative PP duration of 32 h (see Fig. 2, and Additional file, figure 2). Interestingly,

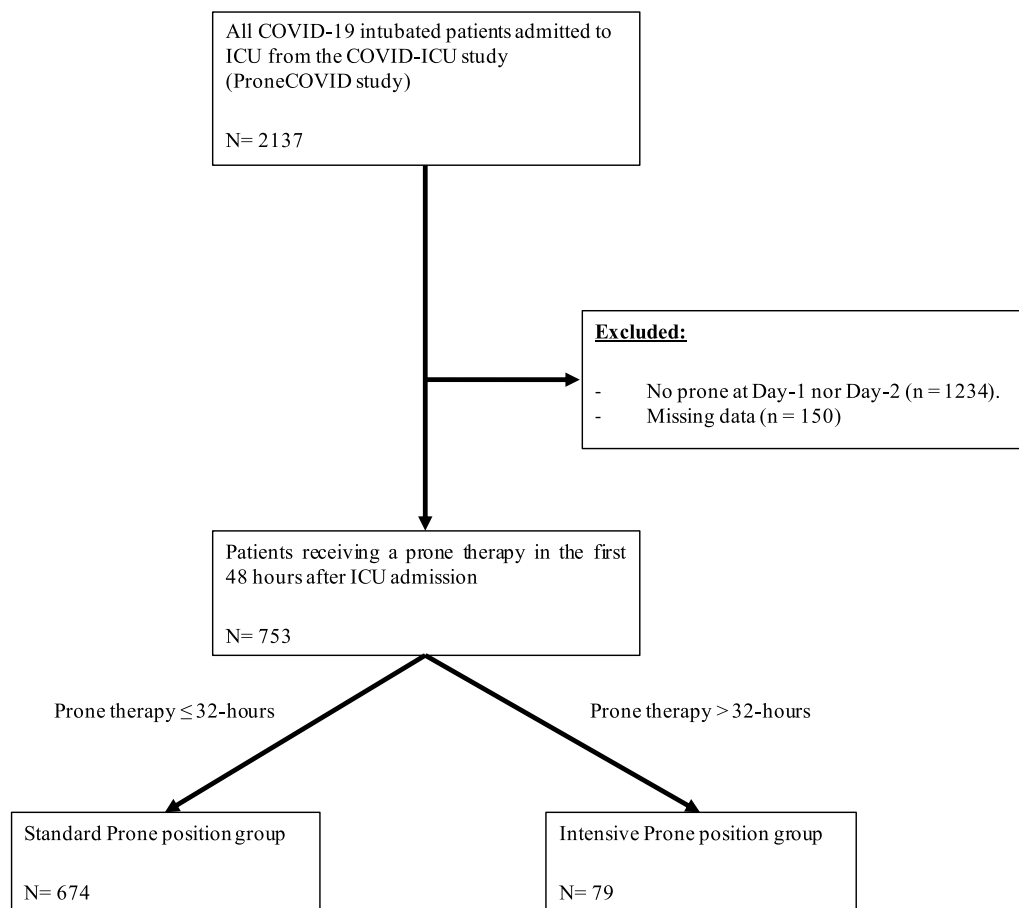


Fig. 1 Study flow chart. ICU intensive care unit

Table 1 Demographic, clinical and ventilatory characteristics of patients at admission

Variable	Standard prone position group (n=674)	Intensive prone position group (n=79)	All patients (n=753)	p
Age (years), median [IQR]	64 [55; 70]	61 [54; 69]	63 [55; 70]	0.13
Sex, n (%)				
Men	506 (76%)	46 (58%)	552 (74%)	0.001
Women	163 (24%)	33 (42%)	196 (26%)	
Body mass index (kg/m ²), median [IQR]	30 [26; 34]	31 [28; 35]	30 [27; 34]	0.02
≥ 30 kg/m ² , n (%)	321 (51%)	48 (64%)	369 (52%)	0.03
Comorbidities, n (%)				
Active smokers	28 (4%)	0 (0%)	28 (4%)	0.06
Treated hypertension	348 (52%)	49 (62%)	397 (53%)	0.10
Known diabetes	216 (33%)	24 (30%)	240 (32%)	0.70
Immunodeficiency	45 (7%)	3 (4%)	48 (6%)	0.31
Long-term corticosteroids	20 (3%)	0 (0%)	20 (3%)	0.15
SAPS II score, median [IQR]	43 [33; 55]	43 [32; 52]	43 [32; 55]	0.80
SOFA score at ICU admission, median [IQR]	7 [4; 10]	8 [6; 11]	7 [4; 10]	0.18
Clinical frailty score ≤ 3, n (%)	539 (87%)	64 (83%)	603 (87%)	0.47
Time between first symptoms and ICU admission (days), median [IQR]	8 [6; 11.8]	8 [5; 11]	8 [6; 11]	0.65
Time between ICU admission and invasive mechanical ventilation (hours), median [IQR]	2.4 [0.5; 8.9]	1.8 [0.5; 3.8]	2.3 [0.5; 8.6]	0.25
Concomitant bacterial pneumonia, n (%)	62 (9%)	5 (6%)	67 (9%)	0.38
Patients receiving high-dose corticosteroids at Day-1, n (%)	67 (10%)	6 (8%)	73 (10%)	0.50
Invasive mechanical ventilation settings on Day-1, median [IQR]				
PaO ₂ /FiO ₂ (mmHg)	126 [87; 172]	137 [96; 187]	128 [88; 174]	0.17
Tidal volume (mL)	410 [380; 446]	400 [364; 437]	410 [378; 444]	0.34
Tidal volume, mL/kg PBW	6 [5.8; 6.6]	6 [5.8; 6.7]	6 [5.8; 6.6]	0.70
Set PEEP (cmH ₂ O)	12 [10; 14]	12 [10; 14]	12 [10; 14]	0.10
Plateau pressure (cmH ₂ O)	25 [22; 28]	26 [24; 28]	25 [22; 28]	0.11
Driving pressure ^a (cmH ₂ O)	13 [11; 18]	14 [11; 19]	13 [11; 18]	0.41
Mechanical power ^b (J/min)	28 [21; 36]	31 [21; 38]	29 [21; 36]	0.25
Ventilatory ratio ^c	1.9 [1.5; 2.3]	2 [1.6; 2.3]	1.9 [1.5; 2.3]	0.22
Static compliance ^d (mL/cmH ₂ O)	32 [26; 41]	32 [24; 41]	32 [26; 41]	0.48
Dynamic compliance ^e (mL/cmH ₂ O)	16 [13; 20]	15 [12; 20]	16 [13; 20]	0.36
Prone position support				
PP duration (hours) at Day 2, median [IQR]	14 [2; 16]	20 [17; 23]	15 [4.5; 17]	<0.001
Cumulative duration of PP (hours) in the first 48 h, median [IQR]	16 [15; 21]	36 [34; 39]	17 [16; 24]	<0.001
Cumulative duration of PP (hours) until Day 14, median [IQR]	48 [28; 81]	93 [56; 151]	52 [31; 88]	<0.001
Blood gas on Day-1, median [IQR]				
pH	7.37 [7.30; 7.42]	7.35 [7.30; 7.39]	7.36 [7.30; 7.42]	0.20
PaCO ₂ (mmHg)	45 [38; 52]	46 [41; 52]	45 [39; 52]	0.13
PaO ₂ /FiO ₂ (mmHg)	428 (64%)	47 (60%)	475 (63%)	0.49
< 150 mmHg, n (%)	25 [22; 28]	26 [23; 28]	25 [22; 28]	0.12
HCO ₃ (mmol/L)	7.4 [7.3; 7.4]	7.3 [7.3; 7.4]	7.4 [7.3; 7.4]	0.20
Lactate (mmol/L)	1.3 [1; 1.7]	1.3 [1; 1.4]	1.3 [1; 1.7]	0.53
Biology, median [IQR]				
Lymphocyte count (× 10 ⁹ /L)	0.8 [0.5; 1.1]	0.8 [0.6; 1.1]	0.8 [0.5; 1.1]	0.38
Thrombocyte count (× 10 ⁹ /L)	226 [170; 286]	225 [172; 287]	225 [170; 287]	0.97
Total bilirubin (μmol/L)	10 [7; 15]	10 [8; 14]	10 [7; 15]	0.94
Serum creatinine (μmol/L)	85 [65; 122]	88 [64; 125]	86 [65; 123]	0.71

IQR: interquartile range; SOFA: sequential organ failure assessment; SAPS II: simplified acute physiology score II; PaCO₂: arterial partial pressure in carbon dioxide; PaO₂: arterial partial pressure in oxygen; FiO₂: fraction inspired in oxygen;

Table 1 (continued)

- ^a Defined as plateau pressure—PEEP. If plateau pressure was missing, peak pressure was considered instead
- ^b Mechanical power (J/min) = 0.098 × tidal volume × respiratory rate × (peak pressure – 1/2 × driving pressure). If not specified, peak pressure was considered equal to plateau pressure
- ^c Defined as (minute ventilation × PaCO₂) – (predicted bodyweight × 100 × 37.5)
- ^d Normalized for ideal body weight. Defined as tidal volume / (Plateau pressure – PEEP)
- ^e Normalized for ideal body weight. Defined as tidal volume / (Peak pressure – PEEP)

Table 2 Primary and secondary outcomes

Outcome	Standard prone position group (n = 674)	Intensive prone position group (n = 79)	All patients (n = 753)	p
Primary outcome				
Mortality at 60-day, n (%)	261 (39%)	31 (39%)	292 (39%)	0.93
Secondary outcomes				
Mortality, n (%)				
At day 28	230 (34%)	28 (35%)	258 (34%)	0.82
At day 90	262 (39%)	31 (39%)	293 (39%)	0.95
Ventilator-free days until day 28, median [IQR]	2 [0; 14]	0.5 [0; 12]	1.5 [0; 14]	0.74
Extracorporeal membrane oxygenation, n (%)	68 (10%)	7 (9%)	75 (10%)	0.75
Inhaled nitric oxide, n (%)	161 (24%)	24 (30%)	185 (25%)	0.21
Neuromuscular blockers, n (%)	652 (97%)	74 (94%)	726 (96%)	0.19
Renal replacement therapy, n (%)	195 (29%)	22 (28%)	217 (29%)	0.83
Static compliance (mL/cmH ₂ O), median [IQR]				
At Day-3	34 [25; 42]	29 [23; 36]	34 [25; 42]	0.03
At Day-5	32 [25; 40]	28 [21; 35]	31 [25; 40]	0.03
At Day-7	31 [24; 41]	29 [21; 37]	31 [23; 41]	0.11
SOFA score, median [IQR]				
At Day-7	10 [7; 12]	9 [7; 11]	10 [7; 12]	0.23
At Day-21	9 [7; 10]	5 [5; 12]	9 [5; 10]	–
At 28-day	7 [6; 10]	11 [11; 11]	7 [7; 11]	–
PaO ₂ /FiO ₂ ratio (mmHg), median [IQR]				
At Day-3	151 [110; 198]	131 [105; 185]	148 [110; 195]	0.04
At Day-5	144 [105; 194]	134 [101; 209]	144 [105; 195]	0.54
At Day-7	149 [108; 189]	154 [108; 207]	150 [108; 192]	0.27

IQR: interquartile range; SOFA: sequential organ failure assessment; PaO₂: arterial partial pressure in oxygen; FiO₂: fraction inspired in oxygen; ICU: intensive care unit

the median duration of PP at Day 2 was 14 [2–16] hours in the standard PP group, while in the intensive group, patients had a median PP session of 20 [17–23] hours. Finally, the cumulative prone therapy duration during the first 14 days was longer in the intensive PP group than in the standard PP group (92 [56–151] vs. 48 [28–81] hours, *p* < 0.001). Characteristics of both groups at day-1 are summarized in Table 1.

Outcomes

In the unadjusted analysis, mortality at day 28, 60, 90 were 34.3%, 38.8% and 38.9%, respectively. No significant difference in term of mortality at day 60 was observed (38.7% vs. 39.2%, *p* = 0.93), as reported in Table 2. The

Kaplan–Meier survival curves for 60-day survival are shown in Fig. 3a.

After weighting, the IPCW weighted Cox models showed no significant difference in 60-day mortality in both analysis (hazard ratio (HR) 0.95 [0.52–1.74], *p* = 0.87 in complete case analysis, and 1.10 [0.77–1.57], *p* = 0.61 in multiple imputation analysis; Figs. 3b and 4a). Mortality at day 28 and day 90 were similar between the two study groups after both complete cases and multiple imputation IPCW weighted analysis (Fig. 4b). The number of ventilator-free days, the need for adjunctive therapies including inhaled nitric oxide, continuous neuromuscular blockers, ECMO and RRT were also similar in both the standard and the intensive PP groups

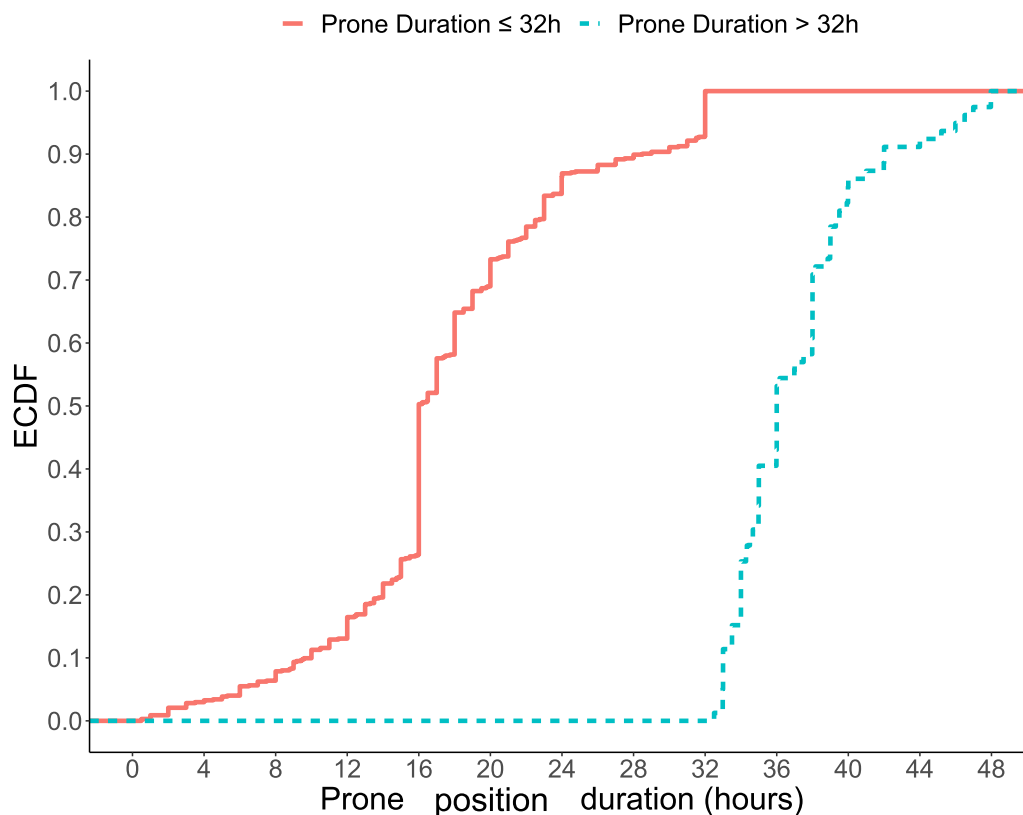


Fig. 2 Empirical cumulative distribution function of the prone positioning duration during the first 48-h. *ECDF*:empirical cumulative distribution function

(Table 2). During the first 28-days after ICU admission, there were no differences in the evolution of the $\text{PaO}_2/\text{FiO}_2$ ratio, the static compliance and the SOFA score between the standard and the intensive PP groups (Additional file, Figures 3, 4 and 5). An additional sensitivity analysis included PP, as continuous variable, in a multivariate Cox model did not find any significant association between the duration of PP and the mortality at day-60 and day-90, in line with our results, as shown in Table 2a–c in Additional file.

In subgroups of patients classified according to the $\text{PaO}_2/\text{FiO}_2$ ratio at Day-1 (< 150 mmHg or ≥ 150 mmHg), the 60-day mortality was 46.8% in patients receiving intensive prone therapy in comparison to 40.9% in patients receiving standard prone therapy in the subgroup of patients with a $\text{PaO}_2/\text{FiO}_2$ ratio less than 150 mmHg (Table 3, and Additional file, Figure 6). No association between the prone therapy strategy and survival at day 60 according to the baseline $\text{PaO}_2/\text{FiO}_2$ ratio was observed (HR 1.09 95% CI 0.56–2.15, $p=0.79$ among patients with $\text{PaO}_2/\text{FiO}_2 < 150$ mmHg and HR 0.93 95% CI 0.27–3.16, $p=0.91$ among patients with $\text{PaO}_2/\text{FiO}_2 \geq 150$ mmHg) (Additional file, Table 3).

An additional analysis included all patients experiencing PP during ICU stay ($n=1987$) was also provided in Additional file 1, and no significant difference in term of mortality at day 60 was observed between intensive PP group and standard PP group, as shown in Additional file 1, figure 6, figure 7 and Table 4.

Discussion

In this secondary analysis of a multicenter, European cohort study, we found that a prolonged PP for more than 32 h during the first 48 h after ICU admission in patients intubated for COVID-19 related ARDS was not associated with a reduction in mortality at 60 days compared to shorter cumulative duration of PP. This finding remained consistent even in a subgroup analysis of patients with a $\text{PaO}_2/\text{FiO}_2$ ratio < 150 mmHg or a $\text{PaO}_2/\text{FiO}_2$ ratio ≥ 150 mmHg on Day-1.

Various strategies for PP duration have been proposed in previous studies. In a large clinical trial showing decreased mortality of PP, the PP group received 16 h of PP alternated with 8 h of supine positioning, with a median of 4 ± 4 sessions during their ICU stay. This approach resulted in a high exposure to prone

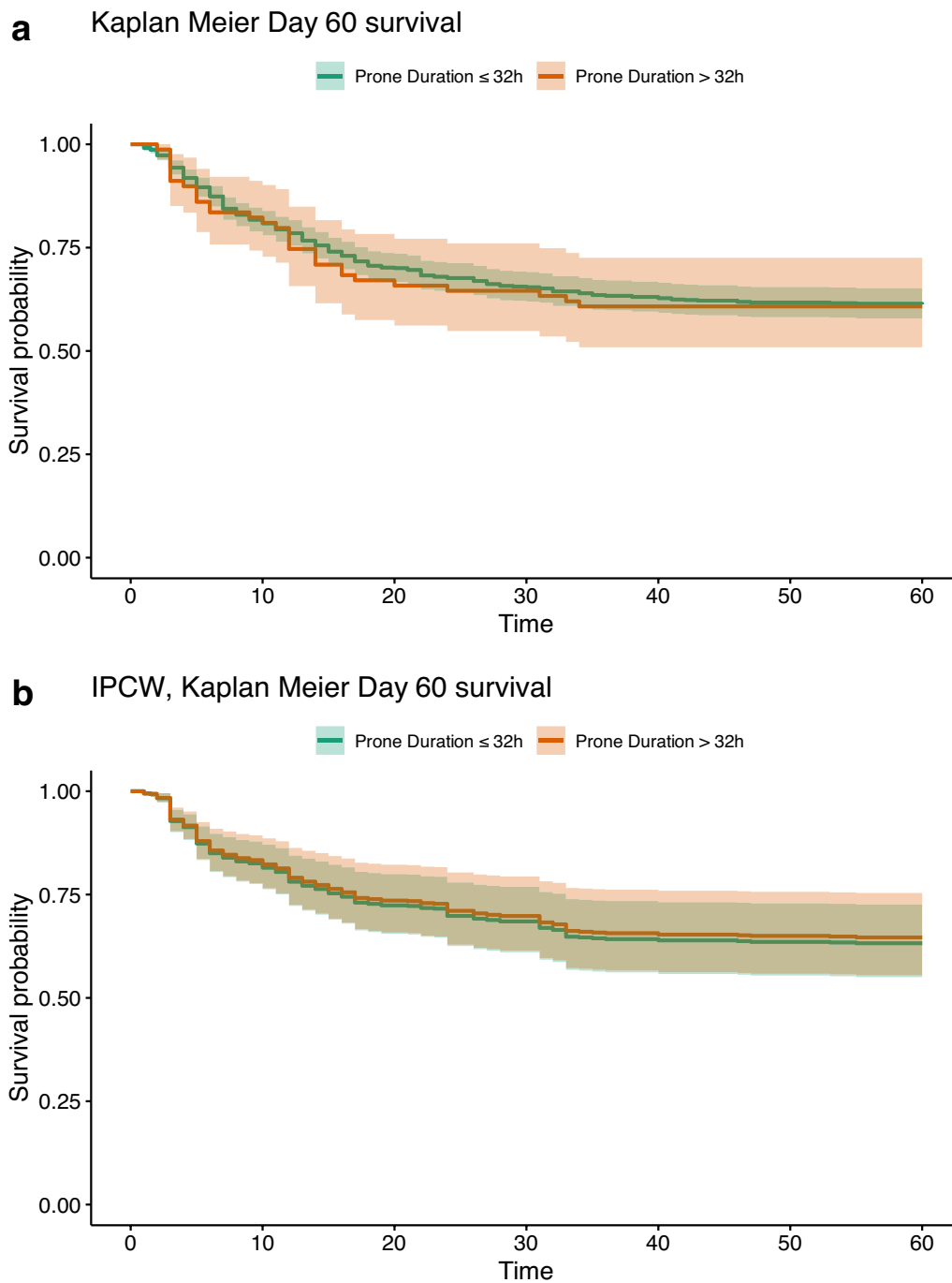


Fig. 3 **a** Kaplan Meier curves according to prone positioning in the first 48-h after ICU admission before weighting adjustment in complete case population. **b** Kaplan Meier curves according to prone positioning in the first 48-h after ICU admission after weighting adjustment in complete case population. *ICU* intensive care unit

therapy and showed a survival benefit [4]. However, during the COVID-19 pandemic one center reported increasing PP duration for a fixed amount of time, resulting in a median duration of 39 h [6]. Other centers maintained patients continuously in the prone

position until clinical improvement was achieved [7, 16, 17, 18]. A retrospective multicenter trial showed that PP sessions, which were maintained for a median duration of 40 h but up to 10 days, was associated with reduced mortality compared to a fixed, 16-h duration

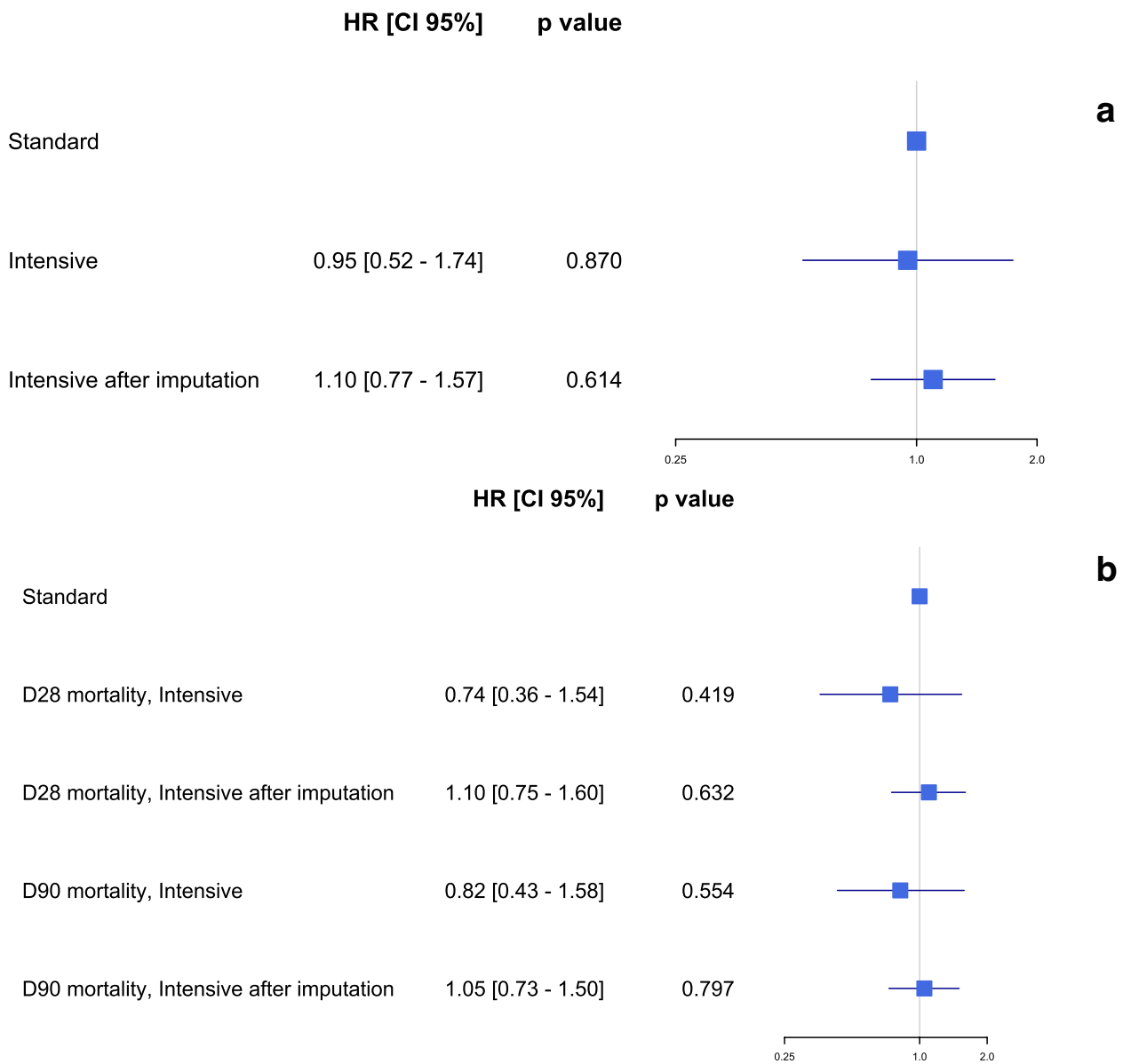


Fig. 4 **a** Forest plot: hazard ratio of mortality at 60-day according to intensive prone positioning strategy in the first 48-h after ICU admission after weighting in baseline and complete case population. **b** Forest plot: hazard ratio of mortality at 28- and 90-day according to intensive prone positioning strategy in the first 48-h after ICU admission after weighting in baseline and complete case population. *ICU* intensive care unit, *HR* hazard ratio

[7]. All those protocols, which maintained patients continuously on the prone position and for a duration exceeding 24 h, are referred to under the name of prolonged PP. In this study, we compared the cumulative duration of PP over the first 2 days after ICU admission. However, we did not know whether this duration was obtained during a continuous session or whether it was the sum of two different PP sessions separated by time spent on the supine position, as described in large-scale clinical trial [4]. Thus, we referred to PP

of a cumulated duration greater than 32 h over 2 days as “intensive PP”. We did not observe an association between intensive PP and increased survival compared to a cumulative duration of 32 h during the first 48 h. Our main hypothesis is that the difference in cumulative duration in the first 48 h between the two groups was not large enough to show to a significant impact on patient’s survival and that in some patients, the intensive PP was in fact the sum of two standard duration PP sessions. If future prospective randomized trials were

Table 3 Mortality according to the prone position strategy and the PaO₂/FiO₂ ratio

Variable	Prone position strategy according to PaO ₂ /FiO ₂				p
	< 150 mmHg (n = 475)		≥ 150 mmHg (n = 278)		
	Standard (n = 428)	Intensive (n = 47)	Standard (n = 246)	Intensive (n = 32)	
60-day mortality, n (%)	175 (41%)	22 (47%)	86 (35%)	9 (28%)	0.16

PaO₂: arterial partial pressure in oxygen; FiO₂: fraction inspired in oxygen; ICU: intensive care unit

to be conducted on PP sessions longer than 16 h, our findings support the testing of strictly greater than 24-h durations.

Similarly, the optimal timing of PP initiation remains uncertain. In a previous clinical study showing survival benefit of PP, PP was initiated within the first hour of randomization and after a first 12-h stabilization period in patients intubated for less than 36 h and requiring a FiO₂ greater than 0.6 with a PaO₂/FiO₂ ratio inferior or equal to 150 mmHg [4]. However, PP is also a protective ventilation measure aimed at decreasing ventilator-induced lung injury by reducing ventral alveolar overdistention [19], and by homogenizing the strain to lung tissue associated with mechanical ventilation on inflamed alveoli [20–22]. Studies have shown that PP improves blood oxygenation by homogenizing the distribution of pulmonary ventilation/perfusion ratio. However, it is important to note that improvement in gas exchange is not sufficient to predict an improvement in survival in cases of ARDS unrelated to COVID-19 [19, 22–26]. It also preserves systemic hemodynamics [27], particularly right ventricular function [28]. Therefore, the criteria of a PaO₂/FiO₂ ratio less than or equal to 150 mmHg was likely chosen to select severe patients, in order to demonstrate an impact on mortality. Physiologically, PP may be beneficial for patients with less severe hypoxemia by preventing clinical deterioration [2, 29]. Our study indicates that the implementation of PP in less severe cases of ARDS (with a PaO₂/FiO₂ ratio > 150 mmHg) may have a greater impact than in more severe cases. This hypothesis is supported by the high mortality rate observed in patients with a PaO₂/FiO₂ ratio > 150 mmHg in the Lung Safe study, which showed that a large proportion of patients with ARDS worsened in the first week, and that it might therefore be appropriate to start PP earlier, making them optimal candidates for the protective impact of PP [30]. Although no conclusions can be drawn from this subgroup analysis of our study,

our hypothesis is that implementing PP when ARDS is not yet too severe and the lung parenchyma is not yet too impacted by both the disease and ventilatory-induced lung injuries (VILI) might be more effective than implementing PP in patients in which the extend of lung injuries is more important.

Surprisingly, in the more severe group of patients with a PaO₂/FiO₂ ratio < 150 mmHg, the intensive PP group had a slightly lower survival rate, although this difference was not statistically significant. Several hypotheses could explain this finding. Firstly, as mentioned above, it is unclear whether the reported PP duration was obtained during a single continuous session or whether it was a cumulative duration with separate PP sessions and periods of supine positioning. The slightly higher mortality observed in the intensive group may be explained by the confounding variable of uncertainty. Another hypothesis is that this result may be due to sampling fluctuation. Additionally, it is possible that the physiopathology observed in the ARDS related to COVID-19 may be different from other ARDS causes. Compared to *Influenza* infection, the ventilation/perfusion ratio impairment is likely due to higher prevalence of microthrombi in the pulmonary circulation, resulting in an increased dead-space effect [31]. Therefore, the benefit of prone therapy in COVID-19 may be more related to the redistribution of pulmonary perfusion, which improves the ventilation perfusion ratio, a transitory effect, rather than alveolar recruitment, a more durable effect [32].

Our study has several strengths. Firstly, it has a large sample size, including patients from 149 different centers across 3 countries, all within included over a short period of time. Secondly, our study focuses on early and daily PP in the first 48 h after ICU admission, which is similar to the approach taken in the recent large-scale clinical trial [4]. This allows for the evaluation of homogeneous patients of similar severity requiring daily PP, thereby the risk of cofounding factors. However, according to the previous report, most patients were placed in the prone position by day 3, and some only received one prone positioning session within the first 48 h, explaining the short median cumulative PP duration in the standard group during the first 48 h [2]. As a result, many patients were excluded based on our inclusion criteria. Another limitation of this study is its retrospective design. Although a robust statistical analysis method was used, some unmeasured confounders may have contributed to the lack of statistically significant differences between the two groups. Examples of these include the variation in limitation of life-sustaining therapies between centres in the COVID-ICU cohort [33], and the potential role of organizational factors such as bed availability in the decision-making process for proning patients [34].

Furthermore, it was unclear whether the cumulative duration of PP reflected a single session or multiple sessions. It is currently unclear whether the repeated long sessions of prone therapy are more beneficial than other protocols for the same cumulative duration of prone positioning. Additionally, we did not report any complications related to prone positioning, such as pressure sores or facial oedema.

Interpretation

An intensive prone therapy strategy, defined as cumulative duration of PP of more than 32 h during the first 48 h of ICU admission, in intubated patients with ARDS related to COVID-19 was not associated with a lower mortality at 60 days compared to a standard prone therapy strategy.

Abbreviations

COVID-19	Coronavirus disease 2019
PP	Prone position
ICU	Intensive care unit
ARDS	Acute respiratory distress syndrome
RT-PCR	Real-time reverse transcriptase-polymerase chain reaction
BMI	Body mass index
SOFA	Sequential Organ Failure Assessment
PaO ₂	Arterial partial pressure of oxygen
FiO ₂	Fraction inspired of oxygen
SAPS II	Simplified Acute Physiology Score II
PEEP	Positive end-expiratory pressure
ECMO	Extracorporeal membrane oxygenation
IPTW	Inverse probability of treatment weighting
PS	Propensity score

Supplementary Information

The online version contains supplementary material available at <https://doi.org/10.1186/s13613-024-01340-z>.

Additional file 1. Additional information about the baseline characteristics and the statistical analysis. Additional Tables and Figures. Figure 1. Timeline and study period considered after ICU admission. Table 1. Proportion of missing data for each variable included in the analysis. Figure 2. Distribution of cumulative duration of prone positioning during the first 48 h after ICU admission. Figure 3. Evolution of the P_aO₂/F_iO₂ ratio during the first 28-days according to the prone strategy. Figure 4. Evolution of the static compliance during the first 28-days according to the prone strategy. Figure 5. Evolution of the SOFA score during the first 28-days according to the prone strategy. Table 2a. Estimated hazard ratio from a multivariate Cox model including day-60 survival associated with multiple variables in both the multiple imputation and complete case populations. b. Estimated hazard ratio from a multivariate Cox model including day-28 survival associated with multiple variables in both the multiple imputation and complete case populations. c. Estimated hazard ratio from a multivariate Cox model including day-90 survival associated with multiple variables in both the multiple imputation and complete case populations. Table 3. Estimated hazard ratio of the day-60 survival associated with the prone therapy strategy according to the prone position therapy strategy and the PaO₂/FiO₂ ratio at ICU admission before and after weighting in both multiple imputation and complete case population. Figure 6. Flow chart study included all ICU patients experiencing prone therapy during ICU stay. Table 4. Estimated hazard ratio of the day-60 survival associated with the prone therapy strategy including all patients experiencing prone therapy during ICU stay before and after weighting in both multiple imputation and complete case population. Figure 7a. Kaplan Meier curves

according to prone therapy strategy including all patients experiencing prone therapy during ICU stay before weighting adjustment in complete case population. b. Kaplan Meier curves according to prone therapy strategy including all patients experiencing prone therapy during ICU stay after weighting adjustment in complete case population.

Acknowledgements

We acknowledge all physicians and ICUs staff for taking care of all those patients. With contributions of the Clinical Research Center, University Hospital and Faculty of Medicine, Geneva (Isabelle Semac, Véronique Ménoni, Emmanuelle Lelong-Favre, Sophie Longchamp and Isabelle Mercier). We also acknowledge with gratitude all the French and Belgian clinical research centers, the medical students, the students of the Polytechnic University, and all the volunteers for their amazing help in data collection. Participating sites and COVID-ICU investigators: CHU Angers, Angers, France (Alain Mercat, Pierre Asfar, François Beloncle, Julien Demiselle), APHP—Hôpital Bicêtre, Le Kremlin-Bicêtre, France (Tài Pham, Arthur Pavot, Xavier Monnet, Christian Richard), APHP—Hôpital Pitié Salpêtrière, Paris, France (Alexandre Demoule, Martin Dres, Julien Mayaux, Alexandra Beurton), CHU Caen Normandie—Hôpital Côte de Nacre, Caen, France (Cédric Daubin, Richard Descamps, Aurélie Joret, Damien Du Cheyron), APHP—Hôpital Cochin, Paris, France (Frédéric Pene, Jean-Daniel Chiche, Mathieu Jozwiak, Paul Jaubert), APHP—Hôpital Tenon, Paris (France, Guillaume Voiriot, Muriel Fartoukh, Marion Teulier, Clarisse Blayau), CHRU de Brest—La Cavale Blanche, Brest, France (Erwen L'Her, Cécile Aubron, Laetitia Bodenès, Nicolas Ferrière), Centre Hospitalier de Cholet, Cholet, France (Johann Auchabie, Anthony Le Meur, Sylvain Pignal, Thierry Mazzoni), CHU Dijon Bourgogne, Dijon, France (Jean-Pierre Quenot, Pascal Andreu, Jean-Baptiste Roudau, Marie Labruyère), CHU Lille—Hôpital Roger Salengero, Lille, France (Saad Nseir, Sébastien Preau, Julien Poissy, Daniel Mathieu), Groupe Hospitalier Nord Essonne, Longjumeau, France (Sarah Benhamida, Rémi Paulet, Nicolas Roucaud, Martial Thyrault), APHM—Hopital Nord, Marseille, France (Florence Daviet, Sami Hraiech, Gabriel Parzy, Aude Sylvestre), Hôpital de Melun-Sénart, Melun, France (Sébastien Jochmans, Anne-Laure Bouilland, Mehran Monchi), Élément Militaire de Réanimation du SSA, Mulhouse, France (Marc Danguy des Déserts, Quentin Mathais, Gwendoline Rager, Pierre Pasquier), CHU Nantes—Hôpital Hotel Dieu, Nantes, France (Reignier Jean, Seguin Amélie, Garret Charlotte, Canet Emmanuel), CHU Nice—Hôpital Archet, Nice, France (Jean Dellamonica, Clément Saccheri, Romain Lombardi, Yanis Kouchit), Centre Hospitalier d'Orléans, Orléans, France (Sophie Jacquier, Armelle Mathonnet, Mai-Ahn Nay, Isabelle Runge), Centre Hospitalier Universitaire de la Guadeloupe, Pointe-à-Pitre, France (Frédéric Martino, Laure Flurin, Amélie Rolle, Michel Carles), Hôpital de la Milétrie, Poitiers, France (Rémi Coudroy, Arnaud W. Thille, Jean-Pierre Frat, Maeva Rodriguez), Centre Hospitalier Roanne, Roanne, France (Pascal Beuret, Audrey Tientcheu, Arthur Vincent, Florian Michelin), CHU Rouen—Hôpital Charles Nicolle, Rouen, France (Fabienne Tamion, Dorothée Carpentier, Déborah Boyer, Christophe Girault), CHRU Tours—Hôpital Bretonneau, Tours, France (Valérie Gissot, Stéphan Ehrmann, Charlotte Salmon Gandonnière, Djali Elaroussi), Centre Hospitalier Bretagne Atlantique, Vannes, France (Agathe Delbove, Yannick Fedun, Julien Huntzinger, Eddy Lebas), CHU Liège, Liège, Belgique (Grâce Kísoka, Céline Grégoire, Stella Marchetta, Bernard Lambertont), Hospices Civils de Lyon—Hôpital Edouard Herriot, Lyon, France (Laurent Argaud, Thomas Baudry, Pierre-Jean Bertrand, Auguste Dargent), Centre Hospitalier Du Mans, Le Mans, France (Christophe Guitton, Nicolas Chudeau, Mickaël Landais, Cédric Darreau), Centre Hospitalier de Versailles, Le Chesnay, France (Alexis Ferre, Antoine Gros, Guillaume Lacave, Fabrice Bruneel), Hôpital Foch, Suresnes, France (Mathilde Neuville, Jérôme Devaquet, Guillaume Tachon, Richard Gallot), Hôpital Claude Galien, Quincy sous Senart, France (Riad Chelha, Arnaud Galbois, Anne Jallot, Ludivine Chalumeau Lemoine), GHR Mulhouse Sud-Alsace, Mulhouse, France (Khaloud Kuteifan, Valentin Pointurier, Louise-Marie Jandeaux, Joy Mootien), APHP—Hôpital Antoine Béclère, Clamart, France (Charles Damoiseil, Benjamin Sztymf), APHP—Hôpital Pitié-Salpêtrière, Paris, France (Matthieu Schmidt, Alain Combes, Juliette Chommeloux, Charles Edouard Luyt), Hôpital Intercommunal de Créteil, Créteil, France (Frédérique Schortgen, Leon Rusel, Camille Jung), Hospices Civils de Lyon—Hôpital Neurologique, Lyon, France (Florent Gobert), APHP—Hôpital Necker, Paris, France (Damien Vimperc, Lionel Lamhaut), Centre Hospitalier Public du Cotentin—Hôpital Pasteur, Cherbourg-en-cotentin, France (Bertrand Sauneuf, Liliane Charrier, Julien Calus, Isabelle

Desmeules), CHU Rennes—Hôpital du Pontchaillou, Rennes, France (Benoît Painvin, Jean-Marc Tadie), CHU Strasbourg—Hôpital Hautepierre, Strasbourg, France (Vincent Castelain, Baptiste Michard, Jean-Etienne Herbrecht, Mathieu Baldacini), APHP—Hôpital Pitié Salpêtrière, Paris, France (Nicolas Weiss, Sophie Demeret, Clémence Marois, Benjamin Rohaut), Centre Hospitalier Territorial Gaston-Bourret, Nouméa, France (Pierre-Henri Moury, Anne-Charlotte Savida, Emmanuel Couadau, Mathieu Série), Centre Hospitalier Compiègne-Noyon, Compiègne, France (Nica Alexandru), Groupe Hospitalier Saint-Joseph, Paris, France (Cédric Bruel, Candice Fontaine, Sonia Garrigou, Juliette Courtiade Mahler), Centre hospitalier mémorial de Saint-Lô, Saint-Lô, France (Maxime Leclerc, Michel Ramakers), Grand Hôpital de l'Est Francilien, Jossigny, France (Pierre Garçon, Nicole Massou, Ly Van Vong, Juliane Sen), Gustave Roussy, Villejuif, France (Nolwenn Lucas, Franck Chemouni, Annabelle Stoclin), Centre Hospitalier Intercommunal Robert Ballanger, Aulnay-sous-Bois, France (Alexandre Avenel, Henri Faure, Angélie Gentilhomme, Sylvie Ricome), Hospices Civiles de Lyon—Hôpital Edouard Herriot, Lyon, France (Paul Abraham, Céline Monard, Julien Textoris, Thomas Rimmele), Centre Hospitalier d'Avignon, Avignon, France (Florent Montini), Groupe Hospitalier Diaconesses—Croix Saint Simon, Paris, France (Gabriel Lejour, Thierry Lazard, Isabelle Etienney, Younes Kerroumi), CHU Clermont-Ferrand—Hôpital Gabriel Montpied, Clermont Ferrand, France (Claire Dupuis, Marine Bereziat, Elisabeth Coupey, François Thouy), Hôpital d'Instruction des Armées Percy, Clamart, France (Clément Hoffmann, Nicolas Donat, Anne Chrisment, Rose-Marie Blot), CHU Nancy—Hôpital Brabois, Vandœuvre-les-Nancy, France (Antoine Kimmoun, Audrey Jacquot, Matthieu Mattei, Bruno Levy), Centre Hospitalier de Vichy, Vichy, France (Ramin Ravan, Loïc Dopeux, Jean-Mathias Liteaudon, Delphine Roux), Hôpital Pierre Bérégovoy, Nevers, France (Brice Rey, Radu Anghel, Deborah Schenese, Vincent Gevrey), Centre Hospitalier de Tarbes, Tarbes, France (Jerry Castanera, Philippe Petua, Benjamin Madeux), Hôpitaux Civils de Colmar—Hôpital Louis Pasteur, Colmar, France (Otto Hartman), CHU Charleroi—Hôpital Marie Curie, Bruxelles, Belgique (Michael Piagnerelli, Anne Joosten, Cinderella Noel, Patrick Biston), Centre hospitalier de Verdun Saint Mihiel, Saint Mihiel, France (Thibaut Noel), CH Eure-Seine—Hôpital d'Evreux-Vernon, Evreux, France (Gurvan Le Bouar, Messabi Boukhanza, Elsa Demarest, Marie-France Bajolet), Hôpital René Dubos, Pontoise, France (Nathanaël Charrier, Audrey Quenet, Cécile Zylberfajn, Nicolas Dufour), APHP—Hôpital Lariboisière, Paris, France (Buno Mégarbane, SqébastianVoicu, Nicolas Deye, Isabelle Malissin), Centre Hospitalier de Saint-Brieuc, Saint-Brieuc, France (François Legay, Matthieu Debarre, Nicolas Barbarot, Pierre Fillatre), Polyclinique Bordeaux Nord Aquitaine, Bordeaux, France (Bertrand Delord, Thomas Laterrade, Tahar Saghi, Wilfried Pujol), HIA Sainte Anne, Toulon, France (Pierre Julien Cungi, Pierre Esnault, Mickael Cardinale), Grand Hôpital de l'Est Francilien, Meaux, France (Vivien Hong Tuan Ha, Grégory Fleury, Marie-Ange Brou, Daniel Zafimahazo), HIA Robert Picqué, Villenave d'Ornon, France (David Tran-Van, Patrick Avargues, Lisa Carencio), Centre Hospitalier Fontainebleau, Fontainebleau, France (Nicolas Robin, Alexandre Ouali, Lucie Houdou), Hôpital Universitaire de Genève, Genève, Suisse (Christophe Le Terrier, Noémie Suh, Steve Primmaz, Jérôme Pugin), AHPH—Hôpital Beaujon, Clichy, France (Emmanuel Weiss, Tobias Gauss, Jean-Denis Moyer, Catherine Paugam Burtz), Groupe Hospitalier Bretagne Sud, Lorient, France (Béatrice La Combe, Rolland Smonig, Jade Violleau, Pauline Cailliez), Centre Hospitalier Intercommunal Toulon, La Seyne sur Mer, France (Jonathan Chelly), Centre Hospitalier de Dieppe, Dieppe, France (Antoine Marchalot, Cécile Saladin, Christelle Bigot), CHU de Martinique, Fort-de-France, France (Pierre-Marie Fayolle, Jules Fatséas, Amr Ibrahim, Dabor Resiere), Hôpital Fondation Adolphe de Rothchild, Paris, France (Rabih Hage, Clémentine Cholet, Marie Cantier, Pierre Troulier), APHP—Bichat Claude Bernard, Paris, France (Philippe Montravers, Brice Lortat-Jacob, Sebastien Tanaka, Alexy Tran Dinh), AHPH—Hôpital Universitaire Paris Sud, Bicêtre, France (Jacques Duranteau, Anatole Harrois, Guillaume Dubreuil, Marie Werner), AHPH—Hôpital Européen Georges Pompidou, Paris, France (Anne Godier, Sophie Hamada, Diane Zlotnik, Hélène Nougue), AHPH, GHU Henri Mondor, Créteil, France (Armand Mekontso-Dessau, Guillaume Carteaux, Keyvan Razazi, Nicolas De Prost), AHPH—Hôpitaux Universitaires Henri Mondor, Créteil, France (Nicolas Mongardon, Olivier Langeron, Eric Levesque, Arié Attias), AHPH—Hôpital Lariboisière, Paris, France (Charles de Roquetaillade, Benjamin G. Chousterman, Alexandre Mebazaa, Etienne Gayat), AHPH—Hôpital Saint-Antoine, Paris, France (Marc Garnier, Emmanuel Pardo, LeaSatre-Buisson, Christophe Gutton), AHPH Hôpital Saint-Louis, Paris, France (Elise Yin, Clémence Marcault, Elie Azoulay, Michael Darmon), AHPH—Hôpital Saint-Antoine, Paris, France (Hafid Ait Oufella, Geoffroy Hariri, Tomas Urbina, Sandie Mazerand), AHPH—Hôpital Raymond Pointcarré, Garches, France (Nicholas Heming, Francesca Santi, Pierre Moine, Djillali Annane), AHPH—Hôpital Pitié Salpêtrière, Paris, France (Adrien Bouglé, Edris Omar, Aymeric Lancelot, Emmanuelle Begot), Centre Hospitalier Victor Dupouy, Argenteuil, France (Gaétan Planteveve, Damien Contou, Hervé Mentec, Olivier Pajot), CHU Toulouse—Hôpital Rangueil, Toulouse, France (Stanislas Faguer, Olivier Cointault, Laurence Lavayssière, Marie-Béatrice Nogier), Centre Hospitalier de Poissy, Poissy, France (Matthieu Jamme, Claire Pichereau, Jan Hayon, Hervé Outin), AHPH—Hôpital Saint-Louis, Paris, France (François Dépret, Maxime Coutrot, Maité Chaussard, Lucie Guillemet), Clinique du MontLégia, CHC Groupe-Santé, Liège, Belgique (Pierre Goffin, Romain Thouny, Julien Guntz, Laurent Jadot), CHU Saint-Denis, La Réunion, France (Romain Persichini), Centre Hospitalier de Tourcoing, Tourcoing, France (Vanessa Jean-Michel, Hugues Georges, Thomas Caulier), Centre Hospitalier Henri Mondor d'Aurillac, Aurillac, France (Gaël Pradel, Marie-Hélène Hausermann, Thi My Hue Nguyen-Valat, Michel Boudinaud), Centre Hospitalier Saint Joseph Saint Luc, Lyon, France (Emmanuel Vivier, Sylvène Rosselli, Gaël Bourdin, Christian Pommier) Centre Hospitalier de Polynésie Française, Polynésie, France (Marc Vinclair, Simon Poignant, Sandrine Mons), Ramsay Générale de Santé, Hôpital Privé Jacques Cartier, Massy, France (Wulfran Bougouin), Centre Hospitalier Alpes Léman, Contamine sur Arve, France (Franklin Bruna, Quentin Maestruggi, Christian Roth), Hospices Civils de Lyon—Hôpital de la Croix Rousse, Lyon, France (Laurent Bitker, François Dhelft, Justine Bonnet-Chateau, Mathilde Filippelli), Centre Cardiologique du Nord, Saint-Denis, France (Tristan Morichau-Beauchant, Stéphane Thierry, Charlotte Le Roy, Mélanie Saint Joau), GHU—Hôpital Saint-Anne, Paris, France (Bruno Goncalves, Aurélien Mazeraud, Matthieu Daniel, Tarek Sharshar) CHR Metz—Hôpital Mercy, Metz, France (Cyril Cadoz, Rostane Gaci, Sébastien Gette, Guillaume Louis), AHPH—Hôpital Paul Brousse, Villejuif, France (Sophe-Caroline Sacloux, Marie-Amélie Ordan), CHRU Nancy—Hôpital Central, Nancy, France (Aurélien Cravoisy, Marie Conrad, Guilhem Courte, Sébastien Gibot), Centre Hospitalier d'Ajaccio, Ajaccio, France (Younès Benzidi, Claudia Casella, Laurent Serpin, Jean-Lou Setti), Centre Hospitalier de Bourges, Bourges, France (Marie-Catherine Besse, Anna Bourreau), Centre hospitalier de la Côte Basque, Bayonne, France (Jérôme Pillot, Caroline Rivera, Camille Vinclair, Marie-Aline Robaux), Hospices Civils de Lyon—Hôpital de la Croix Rousse, Lyon, France (Chloé Achino, Marie-Charlotte Delignette, Tessa Mazard, Frédéric Aubrun), CH Saint-Malo, Saint-Malo, France (Bruno Bouchet, Aurélien Frérou, Laura Muller, Charlotte Quentin), Centre Hospitalier de Mulhouse, Mulhouse, France (Samuel Degoul), Centre Hospitalier de Briançon, Briançon, France (Xavier Stihle, Claude Sumian, Nicoletta Bergero, Bernard Lanaspere), CHU Nice, Hôpital Pasteur 2, Nice, France (Hervé Quintard, Eve Marie Maiziere), Centre Hospitalier des Pays de Morlaix, Morlaix, France (Pierre-Yves Egreteau, Guillaume Leloup, Florin Berteau, Marjolaine Cottrel), Centre Hospitalier Valence, Valence, France (Marie Bouteloup, Matthieu Jeannot, Quentin Blanc, Julien Saison), Centre Hospitalier Niort, Niort, France (Isabelle Geneau, Romaric Grenot, Abdel Ouchike, Pascal Hazera), AHPH—Hôpital Pitié Salpêtrière, Paris, France (Anne-Lyse Masse, Suela Demiri, Corinne Vezinet, Elodie Baron, Deborah Benchetrit, Antoine Monsel), Clinique du Val d'Or, Saint Cloud, France (Grégoire Trebbia, Emmanuelle Schaack, Raphaël Lepeccq, Matthieu Bobet), Centre Hospitalier de Béthune, Béthune, France (Christophe Vinsonneau, Thibault Dekeyser, Quentin Delforge, Imen Rahmani), Groupe Hospitalier Intercommunal de la Haute-Saône, Vesoul, France (Béregère Vivet, Jonathan Paillot, Lucie Hierle, Claire Chaignat, Sarah Valette), Clinique Saint-Martin, Caen, France (Benoît Her, Jennifer Brunet), Ramsay Générale de Santé, Clinique Convert, Bourg en Bresse, France (Mathieu Page, Fabienne Boiste, Anthony Collin), Hôpital Victor Jouselin, Dreux, France (Florent Bavoze, Aude Garin, Mohamed Dlala, KaisMhamdi), Centre Hospitalier de Troye, Troye, France, (Bassem Beilouny, Alexandra Lavalard, Severine Perez), CHU de ROUEN—Hôpital Charles Nicolle, Rouen, France (Benoît Veber, Pierre-Gildas Guitard, Philippe Gouin, Anna Lamacz), Centre Hospitalier Agen-Nérac, Agen, France (Fabienne Plouvier, Bertrand P. Delaborde, Aïssa Kherchache, Amina Chaalal), AHPH—Hôpital Louis Mourier, Colombes, France (Jean-Damien Ricard, Marc Amouretti, Santiago Freitas-Ramos, Damien Roux), AHPH—Hôpital Pitié-Salpêtrière, Paris, France (Jean-Michel Constantin, Mona Assefi, Marine Lecore, Agathe Selves), Institut Mutualiste Montsouris, Paris, France (Florian Prevost, Christian Lamer, Ruiying Shi, Lyes Knani), CHU Besançon—Hôpital Jean Minjoz, Besançon, France, (Sébastien Pili Floury, Lucie Vettoretti), AHPH—Hôpital Universitaire Robert-Debré, Paris, France (Michael Levy, Lucile Marsac, Stéphane Dauger, Sophie Guilmin-Crépon), CHU Besançon—Hôpital Jean Minjoz, Besançon, France, (Hadrien Winiszewski, Gael Piton, Thibaud Soumagne, Gilles Capellier); Médipôle Lyon-Villeurbanne, Villeurbanne, France, (Jean-Baptiste Putegnât,

Frédérique Bayle, Maya Perrou, Ghyslaine Thao), APHP—Ambroise Paré, Boulogne-Billancourt, France (Guillaume Géri, Cyril Charron, Xavier Repessé, Antoine Vieillard-Baron), CHU Amiens Picardie, Amiens, France (Mathieu Guilbart, Pierre-Alexandre Roger, Sébastien Hinard, Pierre-Yves Macq), Hôpital Nord-Ouest, Villefranche-sur-Saône, France (Kevin Chaulier, Sylvie Goutte), CH de Châlons en Champagne, Châlons en Champagne, France (Patrick Chillet, Anaïs Pitta, Barbara Darjent, Amandine Bruneau), CHU Angers, Angers, France (Sigismond Lasocki, Maxime Leger, Soizic Gergaud, Pierre Lemarie), CHU Grenoble Alpes, Grenoble, France (Nicolas Terzi, Carole Schwebel, Anaïs Darivel, Louis-Marie Galerneau), APHP—Hôpital Européen Georges Pompidou, Paris, France (Jean-Luc Diehl, Caroline Hauw-Berlemont, Nicolas Péron, Emmanuel Guérot), Hôpital Privé d'Antony, Antony, France (Abolfazl Mohebbi Amoli, Michel Benhamou, Jean-Pierre Deyme, Olivier Andreumont), Institut Arnault Tzanck, Saint Laurent du Var, France (Diane Lena, Julien Cady, Arnaud Causeret, Arnaud De La Chapelle); Centre Hospitalier d'Angoulême, Angoulême, France (Christophe Cracco, Stéphane Rouleau, David Schnell); Centre Hospitalier de Cahors, Cahors, France (Camille Foucault), Centre hospitalier de Carcassonne, Carcassonne, France (Cécile Lory); CHU Nice—Hôpital L'Archet 2, Nice, France (Thibault Chapelle, Vincent Bruckert, Julie Garcia, Abdlazize Sahraoui); Hôpital Privé du Vert Galant, Tremblay-en-France, France (Nathalie Abbosh, Caroline Bornstain, Pierre Pernet); Centre Hospitalier de Rambouillet, Rambouillet, France (Florent Poiron, Ahmed Pasem, Philippe Karoubi); Hopitaux du Léman, Thonon les Bains, France (Virginie Poupinel, Caroline Gauthier, François Bouniol, Philippe Feuchère), Centre Hospitalier Victor Jousse, Dreux, France (Florent Bavozet, Anne Heron), Hôpital Sainte Camille, Brie sur Marne, France (Serge Carreira, Malo Emery, Anne Sophie Le Floch, Luana Giovannangeli), Hôpital d'instruction des armées Clermont-Tonnerre, Brest, France (Nicolas Herzog, Christophe Giacardi, Thibaut Baudic, Chloé Thill), APHP—Hôpital Pitié Salpêtrière, Paris, France (Saïd Lebbah, Jessica Palmyre, Florence Tubach, David Hajage); APHP—Hôpital Avicenne, Bobigny, France (Nicolas Bonnet, Nathan Ebsstein, Stéphane Gaudry, Yves Cohen); Groupement Hospitalier la Rochelle Ré Amis, La Rochelle, France (Julie Noublanche, Olivier Lesieur); Centre Hospitalier Intercommunal de Mont de Marsan et du Pays des Sources, Mont de Marsan, France (Arnaud Sément, Isabel Roca-Cerezo, Michel Pascal, Nesrine Sma); Centre Hospitalier Départemental de Vendée, La Roche-Sur-Yon, France (Gwenhaél Colin, Jean-Claude Lacherade, Gauthier Bionz, Natacha Maquigneau); Pôle Anesthésie-Réanimation, CHU Grenoble (Pierre Bouzat, Michel Durand, Marie-Christine Héroult, Jean-François Payen).

Author contributions

CLT and NT had full access to all of the data in the study and takes responsibility for the integrity of the data and the accuracy of the data analysis. Concept and design: CLT, TW and NT. Methodology: CLT, TW, NT, SL, DH. Acquisition, analysis, or interpretation of data: CLT, TW, FS, LD, SL, DH, SP, JDR, VJ, CDB, JP, CG, NT. Drafting of the manuscript: CLT, TW, NT. Critical revision of the manuscript for important intellectual content: VJ, CDB, JP, CG, DH, LD, SP, JDR, NT. Statistical analysis: SL, DH. Supervision: JP, NT. Obtained funding: CLT, JP. Administrative, technical, or material support: CLT, NT. All authors interpreted the data and critically revised the manuscript for important intellectual content and gave approval for the final version to be published. All authors agree to be accountable for all aspects of the work in ensuring that questions related to the accuracy or integrity of any part of the work are appropriately investigated and resolved. The manuscript's guarantors (CLT, TW and NT) affirm that the manuscript is an honest, accurate, and transparent account of the study being reported; that no important aspects of the study have been omitted; and that any discrepancies from the study as planned have been explained.

Funding

Open access funding provided by University of Geneva. This study was funded by the AP-HP Foundation and its donors through the program "Alliance Tous Unis Contre le Virus", by the Clinical Research and Development Department, by the French Ministry of Health and by the Private Foundation of the Geneva University hospitals, Geneva, Switzerland. The Réseau Européen de recherche en Ventilation Artificielle (REVA) network received a 75,000 € research grant from Air Liquide Healthcare. Sponsor: The sponsor was Assistance Publique Hôpitaux de Paris (AP-HP). Role of the funder: The funder had no role in the design and conduct of the study, collection, management, analysis, and interpretation of the data; preparation, review, or approval of the manuscript; and decision to submit the manuscript for publication.

Availability of data and materials

The datasets used and/or analyzed during the current study are available from the corresponding author on reasonable request.

Declarations

Ethics approval and consent to participate

All patients or close relatives were informed that their data were included in the COVID-ICU cohort. Human research ethics committee approval for the study were the ethical committee of Geneva (BASEC #: 2020-00704), the ethical committee of Belgium (2020-294) and the ethical committee of the French Intensive Care Society (CE-SRLF 20-23) following our local regulations.

Consent for publication

All patients or close relatives were informed that their data might be published.

Competing interests

All authors declare no conflicts of interest.

Author details

¹Division of Intensive Care, Faculty of Medicine, Geneva University Hospitals and the University of Geneva, Gabrielle-Perret-Gentil 4, 1205 Geneva, Switzerland. ²Division of Intensive Care, Saint-Louis Hospital, Greater Paris Hospital, Paris, France. ³Département de Santé Publique, Centre de Pharmacologie-épidémiologie, AP-HP, Paris, France. ⁴Division of Intensive Care, Grenoble Alpes University Hospital, Grenoble, France. ⁵Division of Intensive Care, Edouard Herriot University Hospital, Lyon, France. ⁶Medical Intensive Care Unit, Nantes Hôtel-Dieu University Hospital, Nantes, France. ⁷Medical Intensive Care Unit, University Hospital of Rennes, Rennes, France. ⁸UMR1137 IAME, INSERM, Université Paris Cité, 75018 Paris, France. ⁹DMU ESPRIT, Service de Médecine Intensive Réanimation, Université Paris Cité, AP-HP, Hôpital Louis Mourier, 92700 Colombes, France.

Received: 18 April 2024 Accepted: 17 June 2024

Published: 27 June 2024

References

- Langer T, Brioni M, Guzzardella A, et al. Prone position in intubated, mechanically ventilated patients with COVID-19: a multi-centric study of more than 1000 patients. *Crit Care*. 2021;25(1):128.
- Le Terrier C, Sigaud F, Lebbah S, et al. Early prone positioning in acute respiratory distress syndrome related to COVID-19: a propensity score analysis from the multicentric cohort COVID-ICU network—the Prone-COVID study. *Crit Care*. 2022;26(1):71.
- Guérin C, Beuret P, Constantin JM, et al. A prospective international observational prevalence study on prone positioning of ARDS patients: the APRONET (ARDS prone position network) study. *Intensive Care Med*. 2018;44(1):22–37.
- Guérin C, Reigner J, Richard JC, et al. Prone positioning in severe acute respiratory distress syndrome. *N Engl J Med*. 2013;368(23):2159–68.
- Papazian L, Aubron C, Brochard L, et al. Formal guidelines: management of acute respiratory distress syndrome. *Ann Intensive Care*. 2019;9(1):69.
- Walter T, Zucman N, Mullaert J, et al. Extended prone positioning duration for COVID-19-related ARDS: benefits and detriments. *Crit Care*. 2022;26(1):208.
- Okin D, Huang CY, Alba GA, et al. Prolonged prone position ventilation is associated with reduced mortality in intubated COVID-19 patients. *Chest*. 2023;163(3):533–42.
- Walter T, Ricard JD. Extended prone positioning for intubated ARDS: a review. *Crit Care*. 2023;27(1):264.
- COVID-ICU Group on behalf of the REVA network and the COVID-ICU investigators. Clinical characteristics and day-90 outcomes of 4244 critically ill adults with COVID-19: a prospective cohort study. *Intensive Care Med*. 2021;47(1):60–73.

10. Von Elm E, Altman DG, Egger M, et al. The strengthening the reporting of observational studies in epidemiology (STROBE) statement: guidelines for reporting observational studies. *Lancet*. 2007;370:1453–7.
11. ARDS Definition Task Force, Ranieri VM, Rubenfeld GD, et al. Acute respiratory distress syndrome: the Berlin definition. *JAMA*. 2012;307:2526–33.
12. Yehya N, Harhay MO, Curley MAQ, Schoenfeld DA, Reeder RW. Reappraisal of ventilator-free days in critical care research. *Am J Respir Crit Care Med*. 2019;200(7):828–36.
13. Hernán MA. How to estimate the effect of treatment duration on survival outcomes using observational data. *BMJ*. 2018;360:k182.
14. Maringe C, Benitez Majano S, Exarchakou A, et al. Reflection on modern methods: trial emulation in the presence of immortal-time bias. Assessing the benefit of major surgery for elderly lung cancer patients using observational data. *Int J Epidemiol*. 2020;49(5):1719–29.
15. Vesin A, Azoulay E, Ruckly S, et al. Reporting and handling missing values in clinical studies in intensive care units. *Intensive Care Med*. 2013;39(8):1396–404.
16. Grambsch PM, Therneau TM. Proportional hazards tests and diagnostics based on weighted residuals. *Biometrika*. 1994;81:515–26.
17. Cornejo RA, Montoya J, Gajardo AJ, et al. Continuous prolonged prone positioning in COVID-19-related ARDS: a multicenter cohort study from Chile. *Ann Intensive Care*. 2022;12(1):109.
18. Douglas IS, Rosenthal CA, Swanson DD, et al. Safety and outcomes of prolonged usual care prone position mechanical ventilation to treat acute coronavirus disease 2019 hypoxemic respiratory failure. *Crit Care Med*. 2021;49(3):490–502.
19. Guérin C, Albert RK, Beitler J, et al. Prone position in ARDS patients: why, when, how and for whom. *Intensive Care Med*. 2020;46(12):2385–96.
20. Pelosi P, Tubiolo D, Mascheroni D, et al. Effects of the prone position on respiratory mechanics and gas exchange during acute lung injury. *Am J Respir Crit Care Med*. 1998;157(2):387–93.
21. Gattinoni L, Taccone P, Carlesso E, Marini JJ. Prone position in acute respiratory distress syndrome. Rationale, indications, and limits. *Am J Respir Crit Care Med*. 2013;188(11):1286–93.
22. Guerin C, Baboi L, Richard JC. Mechanisms of the effects of prone positioning in acute respiratory distress syndrome. *Intensive Care Med*. 2014;40(11):1634–42.
23. Albert RK, Keniston A, Baboi L, Ayzac L, Guérin C. Prone position-induced improvement in gas exchange does not predict improved survival in the acute respiratory distress syndrome. *Am J Respir Crit Care Med*. 2014;189(4):494–6.
24. Galiatsou E, Kostanti E, Svarna E, et al. Prone position augments recruitment and prevents alveolar overinflation in acute lung injury. *Am J Respir Crit Care Med*. 2006;174(2):187–97.
25. Henderson AC, Sá RC, Theilmann RJ, Buxton RB, Prisk GK, Hopkins SR. The gravitational distribution of ventilation-perfusion ratio is more uniform in prone than supine posture in the normal human lung. *J Appl Physiol*. 2013;115(3):313–24.
26. Lamm WJ, Graham MM, Albert RK. Mechanism by which the prone position improves oxygenation in acute lung injury. *Am J Respir Crit Care Med*. 1994;150(1):184–93.
27. Jozwiak M, Teboul JL, Anguel N, et al. Beneficial hemodynamic effects of prone positioning in patients with acute respiratory distress syndrome. *Am J Respir Crit Care Med*. 2013;188(12):1428–33.
28. Vieillard-Baron A, Charron C, Caille V, Belliard G, Page B, Jardin F. Prone positioning unloads the right ventricle in severe ARDS. *Chest*. 2007;132(5):1440–6.
29. Albert RK. Prone ventilation for patients with mild or moderate acute respiratory distress syndrome. *Ann Am Thorac Soc*. 2020;17(1):24–9.
30. Pham T, Serpa Neto A, Pelosi P, et al. Outcomes of patients presenting with mild acute respiratory distress syndrome: insights from the LUNG SAFE study. *Anesthesiology*. 2019;130(2):263–83.
31. Ackermann M, Verleden SE, Kuehnel M, et al. Pulmonary vascular endothelialitis, thrombosis, and angiogenesis in Covid-19. *N Engl J Med*. 2020;383(2):120–8.
32. Camporota L, Sanderson B, Chiumello D, et al. Prone position in coronavirus disease 2019 and noncoronavirus disease 2019 acute respiratory distress syndrome: an international multicenter observational comparative study. *Crit Care Med*. 2021;50(4):633–43.
33. Giabicani M, Le Terrier C, Poncet A, et al. Limitation of life-sustaining therapies in critically ill patients with COVID-19: a descriptive epidemiological investigation from the COVID-ICU study. *Crit Care*. 2023;27(1):103.
34. Primmaz S, Le Terrier C, Suh N, et al. Preparedness and reorganization of care for coronavirus disease 2019 patients in a swiss ICU: characteristics and outcomes of 129 patients. *Crit Care Explor*. 2020;2(8):e0173.

Publisher's Note

Springer Nature remains neutral with regard to jurisdictional claims in published maps and institutional affiliations.