



Article scientifique

Article

2022

Published version

Open Access

This is the published version of the publication, made available in accordance with the publisher's policy.

The 1600CE Huaynaputina eruption as a possible trigger for persistent cooling in the North Atlantic region

White, Sam; Moreno-Chamarro, Eduardo; Zanchettin, Davide; Huhtamaa, Heli; Degroot, Dagomar; Stoffel, Markus; Corona, Christophe

How to cite

WHITE, Sam et al. The 1600CE Huaynaputina eruption as a possible trigger for persistent cooling in the North Atlantic region. In: *Climate of the past*, 2022, vol. 18, n° 4, p. 739–757. doi: 10.5194/cp-18-739-2022

This publication URL: <https://archive-ouverte.unige.ch/unige:167198>

Publication DOI: [10.5194/cp-18-739-2022](https://doi.org/10.5194/cp-18-739-2022)



The 1600 CE Huaynaputina eruption as a possible trigger for persistent cooling in the North Atlantic region

Sam White¹, Eduardo Moreno-Chamarro², Davide Zanchettin³, Heli Huhtamaa^{4,5}, Dagomar Degroot⁶, Markus Stoffel^{7,8,9}, and Christophe Corona^{7,10}

¹Department of History, Ohio State University, Columbus, OH 43210, USA

²Barcelona Supercomputing Center (BSC), Barcelona, 08034, Spain

³Department of Environmental Sciences, Informatics and Statistics, University Ca' Foscari of Venice, Mestre, 30172, Italy

⁴Institute of History, University of Bern, 3012 Bern, Switzerland

⁵Oeschger Centre for Climate Change Research, University of Bern, 3012 Bern, Switzerland

⁶Department of History, Georgetown University, Washington, DC 3700, USA

⁷Climatic Change Impacts and Risks in the Anthropocene (C-CIA), Institute for Environmental Sciences, University of Geneva, Geneva, 1205, Switzerland

⁸Department of Earth Sciences, University of Geneva, Geneva, 1205, Switzerland

⁹Department F.-A. Forel for Environmental and Aquatic Sciences, University of Geneva, Geneva, 1205, Switzerland

¹⁰CNRS, Geolab, University of Clermont Auvergne, Clermont-Ferrand, 63000, France

Correspondence: Sam White (white.2426@osu.edu)

Received: 1 July 2021 – Discussion started: 29 July 2021

Revised: 24 February 2022 – Accepted: 11 March 2022 – Published: 12 April 2022

Abstract. Paleoclimate reconstructions have identified a period of exceptional summer and winter cooling in the North Atlantic region following the eruption of the tropical volcano Huaynaputina (Peru) in 1600 CE. A previous study based on numerical climate simulations has indicated a potential mechanism for the persistent cooling in a slowdown of the North Atlantic subpolar gyre (SPG) and consequent ocean–atmosphere feedbacks. To examine whether this mechanism could have been triggered by the Huaynaputina eruption, this study compares the simulations used in the previous study both with and without volcanic forcing and this SPG shift to reconstructions from annual proxies in natural archives and historical written records as well as contemporary historical observations of relevant climate and environmental conditions. These reconstructions and observations demonstrate patterns of cooling and sea-ice expansion consistent with, but not indicative of, an eruption trigger for the proposed SPG slowdown mechanism. The results point to possible improvements in future model–data comparison studies utilizing historical written records. Moreover, we consider historical societal impacts and adaptations associated with the reconstructed climatic and environmental anomalies.

1 Introduction

This article draws on high-resolution climate proxies and direct historical observations to examine whether the Huaynaputina eruption in 1600 CE could have triggered a mechanism identified in previous modeling studies (Moreno-Chamarro et al., 2017a, b) for persistent summer and winter cooling in the North Atlantic region. Huaynaputina is a stratovolcano in southern Peru (4850 m a.s.l.; 16.61° S, 70.85° W) and belongs to the Central Volcanic Zone of the Andean Volcanic Belt originating in the subduction of the oceanic Nazca plate beneath the continental South American plate (Global Volcanism Project, 2021). The 1600 Huaynaputina eruption is rated 6 on the volcanic explosivity index (VEI); it was the largest eruption in the Andes in historical times and the largest source of dust in the annually resolved Quelccaya ice-core record (Thompson et al., 2013). According to contemporary written accounts, tremors began to be felt in the region in mid-February 1600. A large Plinian eruption took place on February 19, followed by a low, heavy ash-fall that blackened the sky for tens of kilometers around. Pyroclastic flows continued through 26 February, and a phase of

volcanian eruption continued to eject pumice and ash through approximately the beginning of March, with a total ejection of $\sim 13\text{--}14\text{ km}^3$ of tephra reaching up to 400 km from the volcano (Jara et al., 2000; Adams et al., 2001; Thouret et al., 2002; Prival et al., 2019). Pyroclastic flows, lahars, meltwater flooding, and earthquakes caused widespread damage and loss of life in the surrounding region (De Silva et al., 2000).

The first years of the 17th century stand out as some of the coldest of the past 2 millennia in multiple Northern Hemisphere (NH) summer temperature reconstructions, particularly those based on tree-ring density (Schneider et al., 2015; Stoffel et al., 2015; Guillet et al., 2017). Several reconstructions rank 1601 as the coldest summer and/or 1600–1609 as the decade with the coldest NH summer temperatures in at least the past 420 years (D'Arrigo et al., 2006, 2009). Moreover, 1601 stands out as an extreme cold and/or dry summer in numerous regional climate reconstructions around the North Atlantic, including those for Quebec (Gennaretti et al., 2014) and Scandinavia (McCarroll et al., 2013). This abrupt and exceptional cooling has been attributed to the direct radiative response from the enhancement of the stratospheric aerosol layer by the Huaynaputina eruption (De Silva and Zielinski, 1998; Briffa et al., 1998; Verosub and Lippman, 2008). Previous studies have linked this eruption to a volcanic dust veil and reported dimming of sunlight (Lamb, 1970). For example, a Russian chronicle records persistent dark skies in spring 1601 (Akiander, 1849), pointing to the persistence of aerosols in the stratosphere more than 1 year after the eruption. Sulfate depositions dated to ca. 1600 in ice cores at both poles and the tropics have also been attributed to the Huaynaputina eruption (De Silva and Zielinski, 1998; Thompson et al., 2013).

Despite the large body of paleoclimatic and historical sources, the connection between the Huaynaputina eruption and concomitant climatic anomalies poses unresolved research issues. Ice-core records with robust sampling indicate that the Huaynaputina eruption injected fewer sulfates into the stratosphere than other Little Ice Age (LIA) eruptions with a comparable cooling effect, such as the 1453 Kuwae or the 1815 Tambora eruptions, and that these sulfates were asymmetrically distributed between the Northern and Southern hemispheres (Sigl et al., 2015; Toohey and Sigl, 2017). European historical records and temperature reconstructions utilizing written records of weather observations and climate proxies – the “archives of societies” (Brönnimann et al., 2018) – indicate that there was more exceptional winter cooling than summer cooling in the years following the eruption, particularly in central and northern Europe (Luterbacher et al., 2004; Pfister et al., 2018). Most importantly, the observed summer and especially winter cooling persisted longer than would be expected from the direct radiative forcing by transient stratospheric volcanic aerosols alone (Stoffel et al., 2015; Toohey et al., 2019).

Previous work in numerical climate modeling found a potential mechanism for persistent cooling, particularly in and

around the North Atlantic starting in ca. 1600 (Moreno-Chamarro et al., 2017a). In this work, simulations with the Max Planck Institute Earth System Model in its CMIP5 configuration for paleoclimate studies (MPI-ESM-P) revealed a mechanism featuring sea-ice expansion and reduced ocean heat losses in the Nordic and Barents seas driven by a reduction in the northward heat transport by the North Atlantic subpolar gyre (SPG). In this mechanism, feedbacks between North Atlantic cooling and sea-ice buildup, on the one hand, and sub-Arctic atmospheric pressure anomalies, on the other, lead to an increased frequency of atmospheric blocking conditions over Europe, in turn driving extreme winter cooling over the continent and particularly over Scandinavia and central Europe. This mechanism does not entail significant changes in the dominant mode of large-scale atmospheric variability over the North Atlantic, namely the North Atlantic Oscillation (NAO), which is often involved in post-eruption interannual and decadal climate variability (e.g., Zanchettin et al., 2013). Previous studies have demonstrated agreement between simulations with the SPG slowdown and paleoclimate reconstructions regarding the long-term seasonally asymmetric cooling in the North Atlantic region (Moreno-Chamarro et al., 2017b).

However, ensemble sensitivity simulations with MPI-ESM-P and imposed volcanic forcing but different initial conditions have called into question whether volcanic forcing would have been necessary to trigger such an SPG shift. In particular, they have revealed substantial uncertainties about the initial anomaly in Arctic freshwater export that triggers the SPG-centered feedback loop (Moreno-Chamarro et al., 2017b). Previous studies have drawn on proxies in natural archives at mostly decadal or lower resolution to determine the magnitude and timing of shifts in ocean sea-surface temperature and sea-ice extent characteristic of the SPG slowdown (Moreno-Chamarro et al., 2017a, b). Some historical climatology evidence indicates cooling in Europe and the North Atlantic prior to the 1600 eruption. Winter temperature reconstructions of central Europe based on contemporary written observations indicate an onset of colder winters by the 1590s (Dobrovolný et al., 2010; Pfister and Wanner, 2021). Furthermore, historic fishing records indicate an expanded herring catch at the southern end of the herring range during the 1590s, which would also be consistent with cooling North Atlantic temperatures prior to 1600, although this shift may have alternative explanations (Alheit and Hagen, 1997; Holm et al., 2019). Therefore, further higher-resolution reconstructions and examination of historical observations are required to determine whether such an SPG shift was triggered by the Huaynaputina eruption.

The question of whether the Huaynaputina eruption triggered such an SPG slowdown mechanism and thus persistent cooling in the North Atlantic region has implications for human history as well. Previous research associates climatic anomalies – particularly cool, wet summers – with harvest failures, price spikes, excess mortality, and civil unrest across

Europe during the 1590s and early 17th century (Clark, 1985; Parker, 2013, 2018; Degroot, 2018). These impacts included severe subsistence crises in Scandinavia (Utterström, 1955; Huhtamaa and Helama, 2017) and Russia (Dunning, 2001) during exceptionally cold years. By constraining the timing of summer and winter cooling and the role of the Huaynaputina eruption therein, we can help determine the relative roles of climatic versus non-climatic causes, volcanic forcing versus intrinsic variability of the climate system, and short-term anomalies versus longer-term climatic changes in those societal impacts. Moreover, by analyzing climatic changes in both summer and winter at high temporal and spatial resolution as well as environmental changes such as sea-ice duration and extent, this study may help specify which activities and institutions were vulnerable and how people adapted to changing climatic and environmental conditions in ca. 1600.

Therefore, this study applies new high-resolution paleoclimate and historical data to determine whether the 1600 Huaynaputina eruption triggered the previously identified SPG slowdown mechanism and persistent cooling in the early 17th century. It compares the MPI-ESM-P simulations used in Moreno-Chamarro et al. (2017a, b) with and without volcanic forcing and SPG shift to reconstructions from annual proxies in natural archives and historical written records as well as direct historical observations of relevant climate and environmental conditions. We have limited the analysis to the previous MPI-ESM-P simulations because a multi-model investigation including additional simulations covering the early 17th century would have added several sources of uncertainty such as different model sensitivities, different volcanic forcings, different background climate states at the time of the eruption, and different internal variability. The only set of simulations with a close enough setup is the last millennium ensemble with the Community Earth System Model–Community Atmosphere Model version 5 (CESM-CAM5), which includes simulations of the last millennium with different external forcing. However, it is not clear whether CESM-CAM5 shows any sensitivity in the subpolar region to the volcanic forcing (Otto-Bliesner et al., 2016), although a newer version of the model shows cooling in the North Atlantic during the LIA associated with an SPG weakening (Zhong et al., 2018).

We seek to establish whether the years following the eruption saw an abrupt shift in mean conditions of sea-ice extent and/or winter temperature that are characteristic traits of the SPG mechanism and whether particular climatic conditions at the time of the Huaynaputina eruption determined activation (or lack thereof) of the SPG slowdown mechanism. In this way, the study demonstrates the potential for combining natural archives and written historical records to test model-derived mechanisms during the pre-instrumental period, and thus to further the integration of climate modeling, paleoclimatology, and historical climatology for a better understanding of past climate variability and its human dimensions.

2 A mechanism for persistent cooling ca. 1600 CE and current paleoclimate evidence

This section reviews the previous modeling results that established the SPG mechanism for persistent cooling and its consistency with previous paleoclimate reconstructions as well as the challenges in determining whether or not this mechanism was triggered by the 1600 Huaynaputina eruption. Volcanic eruptions such as Huaynaputina influence climate by ejecting chemically and microphysically active gases and solid particles into the atmosphere (Robock, 2000; Timmreck, 2012). During strong eruptions, the volcanic column penetrates the lower stratosphere, where sulfur-containing gases turn into aerosol particles that enhance the existing stratospheric aerosol layer. Volcanic aerosols then typically persist in the stratosphere for up to 2 years (e.g., Timmreck, 2012; Zanchettin et al., 2012). Aerosol particles influence the Earth's radiative balance both by scattering incoming solar radiation back to space, which cools the troposphere and the surface, and by absorbing long-wave solar and terrestrial radiation, which locally warms the stratosphere.

Although these radiative effects are short-lived, volcanic eruptions may influence the decadal and longer evolution of regional climates in two ways (e.g., Zanchettin, 2017). First, close successions of small or moderate eruptions – so-called volcanic clusters – may lead to prolonged periods of surface cooling associated with the persistence of an enhanced stratospheric aerosol layer. Second, dynamical responses may initiate decadal or multidecadal feedback loops encompassing large-scale atmospheric circulation, sea ice, and oceanic thermohaline circulation (e.g., Otterå et al., 2010; Zanchettin et al., 2012). Moreno-Chamarro et al. (2017b) have investigated such a scenario of eruption-induced persistent cooling for the period around 1600 CE. According to their paleoclimate model simulations, the late 16th-century cluster of volcanic eruptions culminating in Huaynaputina produced a cumulative global-average negative radiative flux of about -5 W m^{-2} at the top of the atmosphere (Fig. 1a; see also Moreno-Chamarro et al., 2017b). This volcanic cluster includes the 1585 eruption of Colima, Mexico (VEI 4), a 1591 unidentified eruption, and the 1595 eruption of Nevado del Ruiz, Colombia (VEI 4) observed by contemporaries (Thouret et al., 1990; Simón, 1892, pp. 127–129). Each of these eruptions injected sulfates into the stratosphere (Sigl et al., 2013) and had significant short-term cooling effects on NH summer temperatures (Sigl et al., 2015).

As shown by paleoclimate simulations of the last millennium, this cluster of eruptions could have contributed to the onset and persistence of LIA-like climate anomalies (Helama et al., 2021) for 2 or more centuries due to a sudden increase in the freshwater export from the Arctic that pushed the SPG into a stable weak state (Moreno-Chamarro et al., 2017a), as illustrated in Fig. 1. More specifically, volcanic cooling abruptly increased Arctic sea ice and the associated freshwater export (Fig. 1b), which induced freshening of the upper

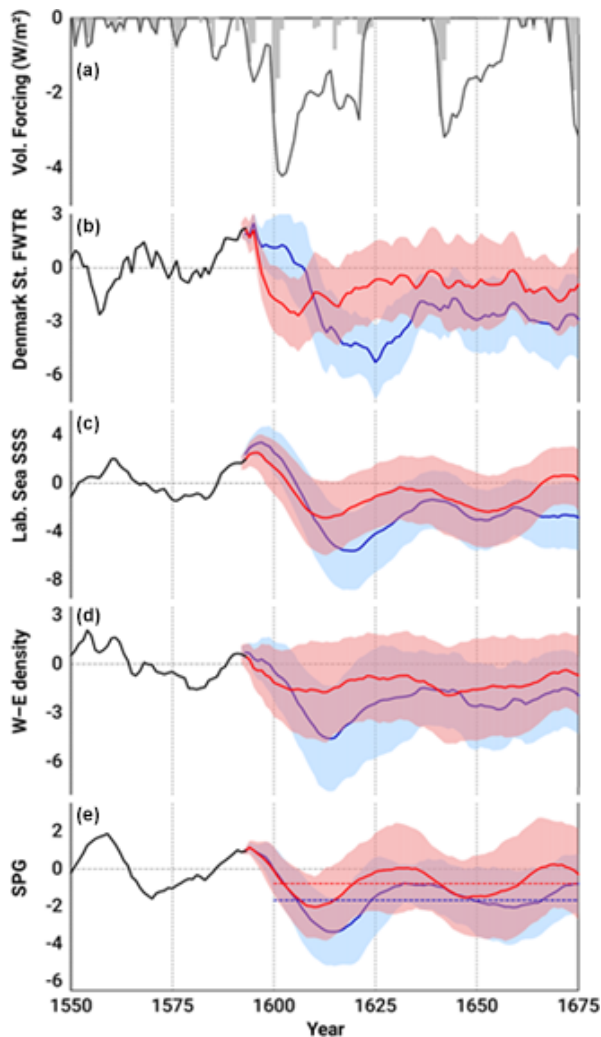


Figure 1. Evolution of North Atlantic climate around the 1600 Huaynaputina eruption from ensemble simulations with MPI-ESM-P (after Moreno-Chamarro et al., 2017a). Blue: realizations with a subpolar gyre (SPG) shift around 1600; red: realizations with no SPG shift. Continuous lines: means of realizations; shadings: standard deviation across realizations; dashed lines: post-1600 temporal averages showing the change in regime in the SPG. From top: (a) accumulated global top-of-the-atmosphere radiative volcanic forcing (line) and the contribution of each individual eruption (bars), both in W m^{-2} ; (b) Denmark Strait freshwater transport (FWTR), as the sum of the liquid and the sea-ice contributions (a larger negative value reflects a stronger southward export); (c) Labrador Sea sea-surface salinity (SSS); (d) west–east gradient in upper-ocean densities in the subpolar North Atlantic; and (e) SPG strength. (b–e) Time series normalized with respect to the pre-eruption period 1550–1590.

subpolar North Atlantic (Fig. 1c). The freshening decreased upper-ocean density in the Labrador Sea and thereby weakened the baroclinic zonal density gradient (Fig. 1d) that controls the SPG strength (e.g., Born and Stocker, 2014). Once in a weak mode, the SPG induced long-lasting anomalies

in the surrounding subpolar and polar ocean, affecting the oceanic transports of heat and salt as well as the sea ice, which helped sustain the weak SPG mode and the associated anomalous climate state (Fig. 1e). The existence of bistability in the SPG in different climate models (Born et al., 2013) supports the possibility of such a regime shift of the subpolar North Atlantic Ocean. Moreno Chamarro et al. (2017b) found consistencies at multidecadal scales between simulations with a weakened SPG and reconstructed changes in several geophysical variables of the North Atlantic after ca. 1600 CE. Sensitivity simulations of the period 1593–1650 with no volcanic forcing yielded SPG shifts similar to those in the volcanically forced simulations. Hence, the study did not conclude that the late 16th-century volcanic cluster was necessary for the SPG shift, which was instead mainly attributed to intrinsic variability of the simulated climate system. Nevertheless, simulations with eruptions produced SPG shifts more frequently than those without: in the 10 runs of the ensemble with volcanic forcing, 6 produced the SPG shift and 4 did not; while in the 10 runs of the ensemble without volcanic forcing, 2 produced the SPG shift and 8 did not. Therefore, even in volcanically forced simulations, the interplay between the volcanic forcing and ongoing intrinsic climate variability determined how the eruptions shaped the SPG response. This finding agrees with the general consideration that the climatic response to eruptions depends on the background climate state (Zhong et al., 2011; Zanchettin et al., 2012, 2013; Pausata et al., 2015, 2016; Gagné et al., 2017).

The dependency of the response on background conditions thus poses a barrier to attribution of the SPG shift around 1600 CE. One possible way to overcome this barrier would be identification among the ensemble sensitivity simulations of a local anomaly that preceded the enhanced Arctic freshwater release and thus determined the SPG shift. For this study, a search for such an “initial seed” was performed in model variables such as sea-surface temperature, sea ice, and oceanic circulation in the sensitivity simulations; however, no evident initial conditions were identified. Nor did we find that the onset of the SPG shift depended on a particular state of the NAO. Neither simulations with an SPG nor those without display consistent or anomalously high or low NAO index values in the decades before or after 1600, as shown in Fig. 2. Furthermore, different reconstructions indicate different NAO index values during this period (Fig. 2 and Hernández et al., 2020), but neither the reconstructions nor simulations display a positive NAO anomaly after 1600 such as those identified following other large tropical eruptions (e.g., Christiansen, 2008). As recent studies indicate (Bittner et al., 2016; Coupe and Robock, 2021), a post-eruption positive NAO response with Eurasian winter warming appears to be contingent on tropospheric conditions at the time of the eruption rather than a dynamical response to stratospheric aerosols alone. Therefore, the precise conditions for the onset of the mechanism may be related either to stochastic phe-

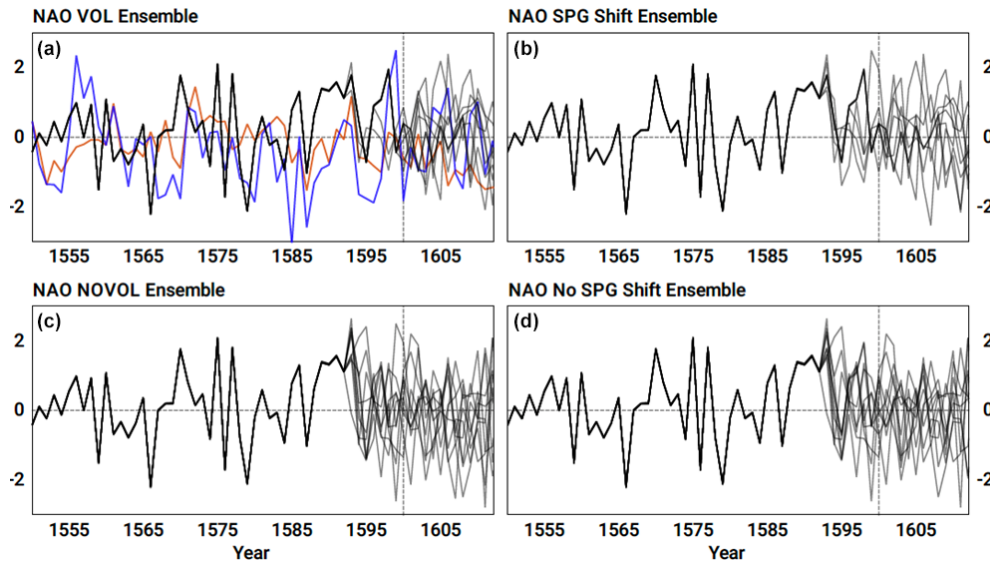


Figure 2. North Atlantic Oscillation (NAO) time series (defined as the first principal component of winter, DJF, sea-level pressure over the North Atlantic, 20–90° N and 80° W–40° E) in the MPI-ESM-P ensemble with and without volcanic forcing (**a**, **c**) and with and without subpolar gyre (SPG) shift (**b**, **d**). Two NAO reconstructions are plotted from Ortega et al. (2015; red) and Michel et al. (2020; blue).

nomena or to a combination of anomalous states in different climate components, or else they may be undetectable within the limits of the small ensemble size investigated by Moreno-Chamarro et al. (2017b).

Since an initial seed could not be identified, we have attempted a second approach to attribution in this study. The simulations with the SPG slowdown show short-term and long-term climatic and environmental changes with distinguishing traits, which may constrain the combinations of external forcing and climate state compatible with this mechanism. In 1601 and 1602, these simulations show a widespread summer cooling, especially around the Mediterranean Sea, Greenland, and the eastern North Atlantic, as shown in Fig. 3. This short-term cooling mainly reflects the direct radiative response to the volcanic forcing, since six out of the eight simulations that produce the SPG shift are those with volcanic forcing. In the short term, simulations with an SPG shift also show minor differences in oceanic variables such as the barotropic stream function and winter sea-surface temperature in the North Atlantic. Larger differences between ensembles with and without an SPG shift emerge over the following decades, particularly after the 1610s, as shown in Fig. 4. The weakening in the circulation in the subpolar North Atlantic, which represents the SPG slowdown, is accompanied by cooling and expanded sea ice in the Nordic Seas, in response to reduced northward oceanic heat transport. Colder conditions extend into the lower atmosphere especially in winter and induce an anomalous blocking-like structure over northern Europe and associated anomalous easterlies over central Europe. In contrast to winter, the SPG slowdown has a weaker impact on the summer climate over Europe. Therefore, we have identified and examined high-resolution prox-

ies and direct historical observations of climate and environmental conditions for consistency with these distinguishing traits of simulations with the SPG slowdown and with the timing of the Huaynaputina eruption.

3 Annually resolved climatic and environmental reconstructions

This section presents the new high-resolution paleoclimate proxies and historical observations of climate and environmental conditions selected to determine whether these were consistent or not with a Huaynaputina eruption trigger for the previously identified SPG mechanism for persistent cooling. Past studies of the proposed mechanism relied mainly on reconstructions from marine archives with decadal to centennial resolution to determine whether historical changes in North Atlantic sea-ice extent and sea-surface temperature were compatible with an SPG shift (Moreno-Chamarro et al., 2017a, b). Although these reconstructions did suggest that colder conditions and expanded sea ice prevailed over the first half of the 17th century in the North Atlantic, they lacked the temporal resolution to determine whether the SPG slowdown occurred through a regime shift triggered by the 1600 Huaynaputina eruption. Similarly, past studies did not distinguish between the different short-term and long-term impacts in the simulations as described above.

Therefore, in this study we first re-examine two high-resolution reconstructions of relevant climatic and environmental conditions: a network of tree-ring width and maximum density measurements as a proxy for summer temperatures and the annual opening dates of ports around the Baltic

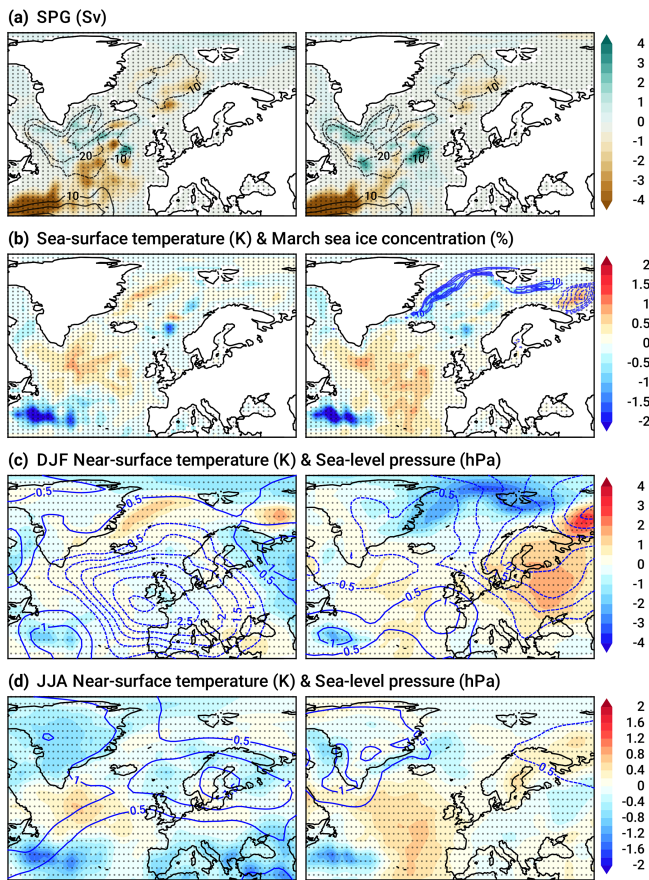


Figure 3. Short-term response (anomalies in 1601–1602 with respect to 1550–1590) in the MPI-ESM-P ensemble with (left) and without (right) a subpolar gyre (SPG) shift. Anomalies are in (a) the annual barotropic streamfunction (in Sv; shading), with contours for the 1550–1590 mean, (b) annual sea-surface temperature (in K; shading) and March sea-ice concentration (in percentage, contours every 5%), and in near-surface (2 m) air surface temperature (in K; shading) and sea-level pressure (in hPa; contours), in (c) winter (DJF) and (d) summer (JJA). Stippling masks statistically non-significant anomalies at the 5% level based on a Student's *t* test.

as a proxy for winter sea ice and winter temperatures. We then present information from historical records containing direct observations of relevant conditions: wind directions from the North Sea coast and observations of sea-ice extent from Iceland and from ship voyages in the North Atlantic (see Fig. 5 for locations). Although still sparse, such information provides additional constraints on the timing of climate and environmental changes in and around the North Atlantic, and hence it can be used to examine whether the post-Huaynaputina eruption period marked a shift in mean conditions for variables sensitive to the SPG slowdown.

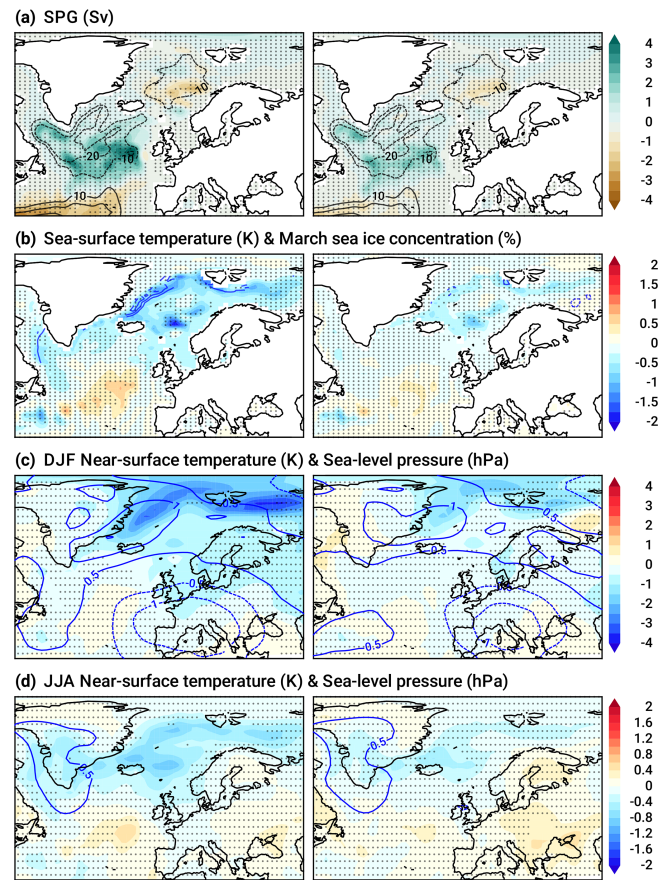


Figure 4. Long-term response (anomalies in 1601–1630 with respect to 1550–1590) in the MPI-ESM-P ensemble with (left) and without (right) a subpolar gyre (SPG) shift, as in Fig. 3.

3.1 Gridded summer temperature from a tree-ring width and density network

The reconstruction of climatic conditions and cooling induced by the 1600 Huaynaputina eruption is based on the NVOLC v2 dataset (Guillet et al., 2017, 2020), which was created with the specific goal to detect and quantify volcanic cooling; it includes 13 tree-ring width and 12 maximum latewood density chronologies from across the NH (see Stoffel et al., 2015; Guillet et al., 2017, for details). The characterization of regional climatic change and the illustration of spatial temperature anomalies after the 1600 Huaynaputina eruption was based on the NVOLC v2 network of tree-ring proxies and served the development of a climate field reconstruction of extratropical NH summer (JJA) temperatures as follows: in a first step, we grouped the 25 chronologies into 11 regional clusters using a correlation coefficient (*r*) threshold exceeding 0.3 over the period that was common to all chronologies (for details, see Guillet et al., 2017, 2020). In total 3486 grid points can thus be used for the reconstruction of the volcanic cooling induced by the Huaynaputina eruption. To examine short-term summer cooling

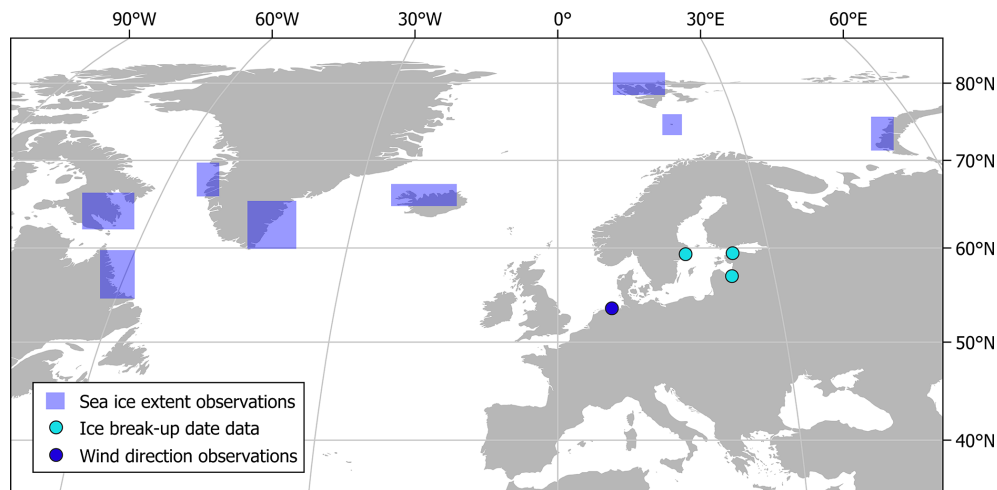


Figure 5. Location of historical observations.

induced by the eruption, we reconstructed the temperature anomaly in 1601–1602 with respect to the average of the period 1550–1590. For comparison, we also employed the N-TREND (Northern Hemisphere Tree-Ring Network Development) spatial reconstruction of large-scale mean May–August temperature covering the Northern Hemisphere mid-latitudes between 40 and 75° N (Wilson et al., 2016; Anchukaitis et al., 2017). The reconstruction is based on 54 published tree-ring records and uses different parameters as proxies for temperature, including ring-width (11 records), maximum latewood density (18 records), and mixed parameters (25 records) (see Wilson et al., 2016, for details). The N-TREND version used here is version (S) detailed in Anchukaitis et al. (2017), which uses point-by-point multiple regression (Cook et al., 1994) of the tree-ring proxy records available within 1000 to 2000 km of the center point of each 5° × 5° instrumental grid cell and a similar nesting procedure to Wilson et al. (2016). We use the average of all the grid point reconstructions for the periods where the validation reduction of error is greater than zero.

3.2 Baltic sea-ice concentration and winter temperature

In the Baltic Sea area, port towns kept records when the harbors were free from ice, marking the beginning of the sea trade season following each winter (Jevrejeva, 2001; Tarand, 1992; Tarand and Nordli, 2001). In addition to direct observations, ice breakup dates can be obtained from indirect evidence such as harbor customs books, which marked the tolls paid on the date when the first ships arrived and departed after the winter (Leijonhufvud et al., 2008; Degroot, 2018). These dates for ice breakup and the beginning of the sailing season have been identified as the proxy with the strongest reconstruction skill for northern European winter and early spring temperatures (Hari et al., 2017); reconstructions based on this proxy can explain up to 67 % of winter

temperature variance (Leijonhufvud et al., 2010). To assess short-term impacts of the 1600 Huaynaputina eruption, we compared the ice breakup data (Betin and Preobrazhinski, 1959; Leijonhufvud et al., 2010; Tarand et al., 2013) and simulations for the years 1599 and 1601, each with respect to the 1550–1590 reference period. In the model, breakup dates were defined as the first day of the year when sea-ice concentrations in the Baltic Sea (averaged between 50–60° N and 10–30° E) were lower than 1 %, after smoothing with a 7 d running mean. This threshold ensures similar dates in the model and historical records, around early April. To assess whether there was a long-term shift following the Huaynaputina eruption, we looked for change points in the Tallinn harbor ice breakup timing data for any year within any segment length of ≥ 30 years in the period 1550–1675 using the BinSeg and PELT methods for change point detection (Scott and Knott, 1974; Killick et al., 2012; Killick and Eckley, 2014). The change point analysis could not be performed with the data from Stockholm and Riga harbors due to considerable data gaps before and after 1601.

3.3 North Sea wind direction

Anemometer readings are unavailable for the late 16th and early 17th centuries. While numerous voyages recorded information in ship logs, these do not provide a continuous series for wind direction over the North Sea until later in the 17th century. However, this period saw the beginnings of daily weather narratives in journals and almanacs, including some records with consistent and reliable observations of wind direction (Pfister et al., 1999; Pfister and White, 2018). Useful for the target region are the weather journals of David Fabricius, compiled in East Friesland (Germany) during 1590–1612 and reproduced and analyzed in a previous study (Lenke, 1968). These observations were recorded in flat terrain and therefore observations should reflect regional

wind direction rather than local obstructions. We compared the percentage of days in each year with winds from each direction in the reconstruction and in the MPI-ESM-P ensemble of simulations with and without the SPG shift.

3.4 North Atlantic sea-ice extent

Previous studies have utilized proxies in natural archives to reconstruct North Atlantic sea-ice extent at multidecadal to decadal resolution. In particular, studies of IP₂₅, a lipid biomarker produced by diatoms that inhabit the ice, indicate a significant expansion of spring sea-ice extent ca. 1600 on the Icelandic shelf (Massé et al., 2008; Cabedo-Sanz et al., 2016), the east Greenland shelf (Kolling et al., 2017), and in the Fram Strait (Müller et al., 2012). Historical observations, which are precisely dated, may indicate whether the shift occurred after the 1600 Huaynaputina eruption in a manner consistent with an eruption-triggered SPG shift.

This study examines three sources of sea-ice observations for the period. First, consistent observations of sea ice around the north shore of Iceland began during the late 16th century. These have been employed in several past studies as an indicator of annual sea-ice extent as well as local temperatures and societal impacts in Iceland (Ogilvie, 1995; Ogilvie and Jónsdóttir, 2000; Ogilvie and Jónsson, 2001; Ogilvie, 2019, 2022). Second, during the first 2 decades of the 17th century, walrus-hunting expeditions to Bjørnøya, sponsored by the English Muscovy Company, spurred the development of a large European whaling industry that centered on the bays of Spitsbergen. Because sailors in search of walruses and whales initially hunted from temporary encampments along the coast, expeditions usually arrived at their hunting grounds as soon as sea ice began to retreat from these bays (Degroot, 2020).

Third, an increasing number of European ships sailed into the North Atlantic and Arctic seas on voyages of exploration. Although this period predates systematic reconstruction of sea-ice extent from ships' logs, many of these voyages left detailed records, including descriptions of sea ice. Because written observations from the 16th and early 17th centuries lacked precise measurements or a standardized vocabulary for ice conditions, the most objective criterion for determining sea-ice extent is when and where ships changed course due to sea ice described as "impassable" or a similar term. For consistency, we identified common points at which ships did or did not turn back from an intended destination due to dangerous sailing conditions, using only those locations that had records in the decades before and after 1600. Decisions to turn back during a voyage could depend on a mix of factors, including cold, duration of voyage, type of ship, crew morale, and danger of sailing conditions. Therefore, we analyzed voyage journals, ship logs, and other underlying information to identify important factors in each case (see Supplement).

4 Results

4.1 Northern Hemisphere summer temperature

As found in previous tree-ring-based reconstructions, the 1600 Huaynaputina eruption produced a sharp decline in NH summer temperatures during 1601–1602 (Fig. 6). In fact, with a cooling of -1.6°C in 1601 CE, the Huaynaputina eruption caused the most significant cooling recorded in the Northern Hemisphere reconstruction over the past 1500 years. The simulations and NVOLC v2 reconstruction show agreement in the magnitude of the average cooling over Europe; however, there is little agreement in the spatial pattern of the anomaly, even in the closest simulation (Fig. 7). The reconstruction–simulation discrepancy is especially evident over Scandinavia and the Balkan region, where simulations yield much more cooling compared to the reconstruction.

4.2 Baltic sea-ice concentration and winter temperature

As shown in Fig. 8, the ice breakup data in Riga, Stockholm, and Tallinn suggest longer "winter seasons" in 1599 and 1601 compared to the period 1550–1590, about 1–2 weeks longer in 1601 in Riga and Stockholm than in Tallinn. This may reflect the volcanic cooling over Europe after 1600. In the sensitivity simulations, however, ice breakup in the Baltic Sea in 1601 can occur at a date both earlier and later than in 1599 with and without the 1600 Huaynaputina eruption. The simulations therefore do not support a robust connection between the volcanic cooling and a later ice breakup date in these cities immediately after the eruption. This is consistent with the results described above on the simulated short-term climatic response (Fig. 2), where the volcanic cooling is (on average) strongest in summer and mostly absent in winter over the region. This result also confirms that intrinsic climate variability, including climate modes such as the NAO and Arctic Oscillation, plays a major role in setting winter conditions over Europe, including Baltic Sea temperatures and sea ice (Moreno-Chamarro et al., 2017b; see also Chen and Hellström, 1999; Omstedt and Chen, 2001; Eriksson et al., 2007; Zanchettin et al., 2019). In particular, the duration of Baltic sea ice and port closures shows a negative correlation with the NAO index (Jevrejeva, 2002); thus, the absence of a post-eruption positive NAO anomaly helps account for the longer port closure dates ca. 1600.

As shown in Fig. 9, change points in Tallinn harbor ice breakup dates were detected in 1597 and 1630. The change in mean of the Tallinn ice breakup data time series indicates colder winters and greater persistence of Baltic sea ice in the period 1597–1630 than during 1563–1596 or 1631–1664. Similarly, the winter ice severity index from the southwestern Baltic identifies a phase of increased severity between 1593 and 1630 (Koslowski and Glaser, 1999). The timing raises at least three possibilities. First, the winter cooling may

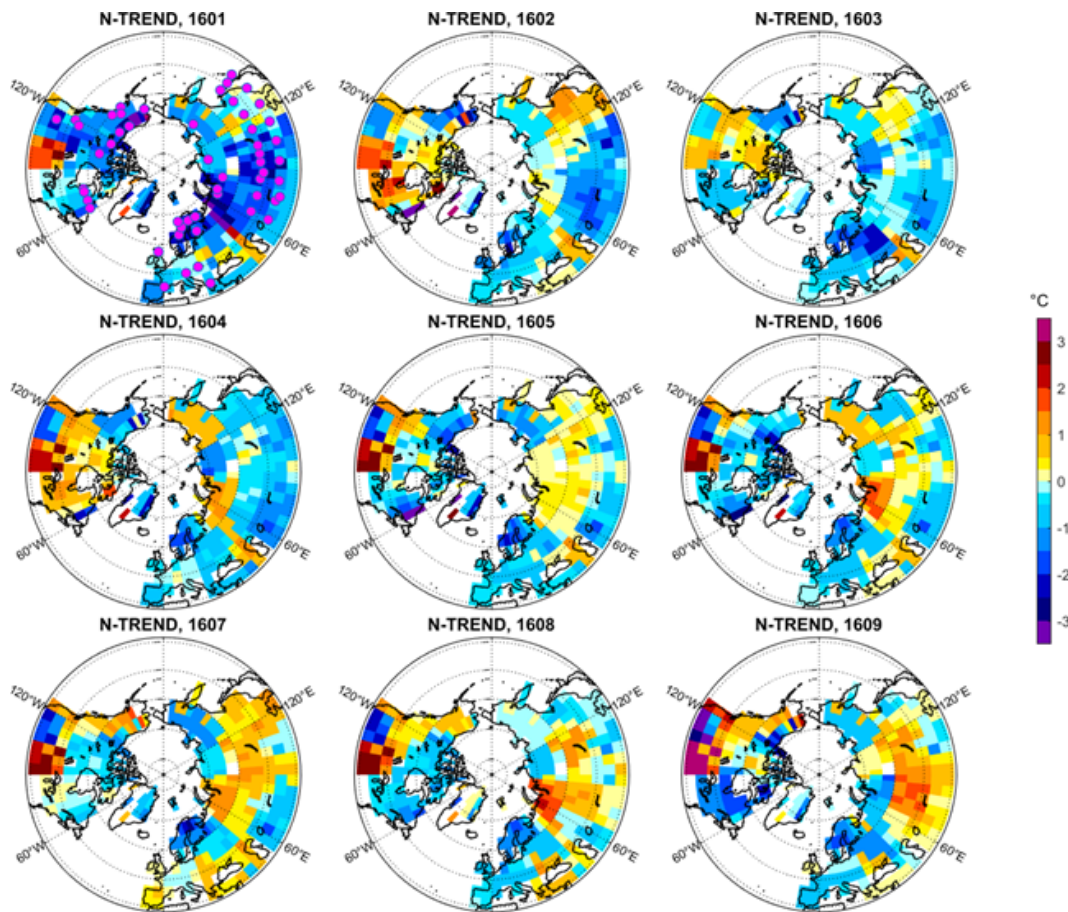


Figure 6. N-TREND temperature anomaly in each year of the period 1601–1609 with respect to the average over the period 1550–1590. The purple dots in the top-left plot indicate sites of tree-ring width and maximum latewood density used for the spatial reconstruction. The size of reconstructed grid cells is $5^{\circ} \times 5^{\circ}$ lat \times long. The instrumental data used as target field for the reconstruction are May to August monthly temperature anomalies with respect to the 1961–1990 period extracted from HadCRUvT4 (Cowtan and Way, 2014). The spatial reconstruction was developed using a point-by-point regression (Cook et al., 1999), which accounts for the spatial distribution and relationship of the proxy predictor network to the target field.

have been unrelated to the SPG slowdown. Second, the cooling may have been caused by an SPG slowdown that began before the Huaynaputina eruption. Finally, there may have been other causes for cooling during the 1590s – such as the 1591 and 1595 eruptions described above – before the Huaynaputina eruption triggered an SPG slowdown and further cooling. Thus, the timing of winter cooling detected in this reconstruction could be consistent with an eruption-induced SPG slowdown but does not provide further evidence for it.

4.3 North Sea wind direction

Observations in contemporary weather diaries indicate a marked reduction in the frequency of southwesterly winds and an increase in the frequency of easterly winds in the period 1590–1612 over the North Sea as compared to an early instrumental reference period: 1881–1925 (Lenke, 1968). The greatest change occurred during winter months. During

the modern reference period the highest frequency of easterlies near East Friesland occurred in May–June, when they were predominant on only 10%–15% of days. Averaged over the years during which David Fabricius kept daily observations, easterly winds were predominant on more than 20% of days during October, December, February, and March. As noted by Metzger and Tabeaud (2017), Fabricius’s observations also indicate far more frequent snows and longer frosts during most of the winters in this period than those observed since the 20th century.

The year 1601 has the highest frequency of days with winds predominantly from the north, northeast, or east. As displayed in Fig. 10, this short-term shift toward more frequent northerlies is found in simulations with the SPG shift but not in those without it. Otherwise, neither the reconstruction data nor simulations provide a clear signal of volcanic forcing or the SPG shift in the characteristics of winter winds over the North Sea.

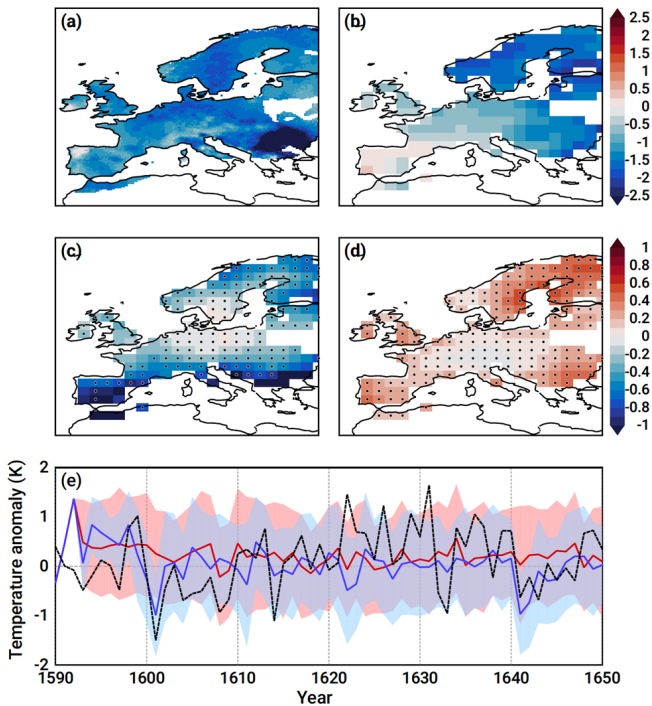


Figure 7. (a–d) Spatial pattern of the 1601–1602 anomaly in summer (JJA) temperature (in K; with respect to 1550–1590) in (a) the NVOLC v2 reconstruction; (b) the MPI-ESM-P ensemble member r3i8, for which the spatial correlation coefficient with the reconstruction in (a) is the largest (0.17); (c) the ensemble with volcanic forcing; and (d) the ensemble without volcanic forcing between 1593–1650. The r3i8 shown in (b) is a sensitivity simulation branched in 1600 from the original simulation r3i1p1 through a slight, temporary perturbation in one atmosphere model’s parameter (Moreno-Chamarro et al., 2017b). Grid points without stippling in (c) and (d) are where at least 80% of the ensemble members agree on the sign of the anomaly. (e) Summer temperature anomaly (in K; with respect to 1550–1590) of the NVOLC v2 reconstruction (black, dashed line; shifted +0.5 K) and of the ensemble with (blue) and without (red) volcanic forcing (for which thick lines are the ensemble mean and the shading is the ensemble standard deviation).

4.4 North Atlantic sea ice

Table 1 summarizes all observations that met the criteria listed in Sect. 3.4. Where multiple sources were available for a single location and year, they agreed in all cases, with the exception of mixed reports in 1612 at Bjørnøya and 1614 and 1617 around northern Spitsbergen, probably due to shifting ice conditions within the same season. The small number and heterogeneity of the observations do not permit a robust reconstruction of sea-ice conditions; however, the results support the proxy evidence in natural archives indicating an increase in North Atlantic sea ice after ca. 1600. During the 1570s–1590s several voyages were able to approach the southern tip of Greenland from the east or reach western Novaya Zemlya. Two of three could land at Labrador and four of five at Baffin Island. The Icelandic historical sources

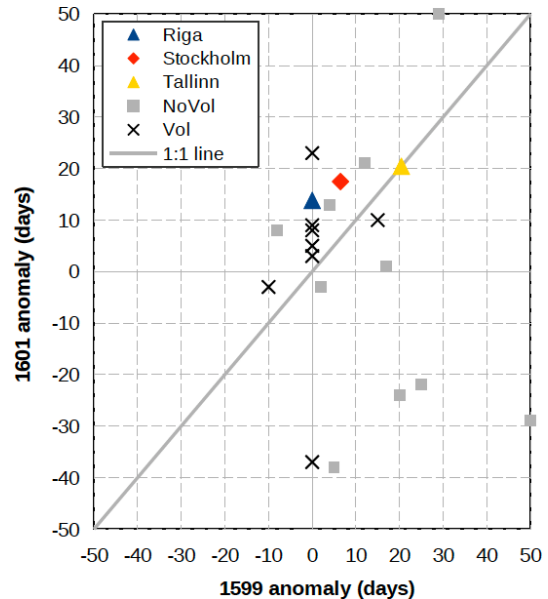


Figure 8. Anomaly in the sea-ice breakup date in 1601 and 1599, with respect to the 1550–1590 period. In the MPI-ESM-P simulations, breakup dates are defined as the first day of the year when sea-ice concentration in the Baltic Sea (averaged between 50–60° N and 10–30° E) is lower than 1%, after smoothing with a 7 d running mean. This threshold ensures similar dates in the model and historical records, around early April. A breakup anomaly equal to 50 indicates that the simulation does not show a breakup date in 1 year. Note that six simulations have the same 1599 anomaly, since the ensemble begins in 1600.

suggest that the 1560s were very cold with much sea ice but that the 1570s were mild; they provide indications that there was much sea ice off the coasts during the 1580s and the years of the 1590s. From the period 1602–1620, no voyages were able to land on the southern tip of Greenland, the northern Labrador coast, or Novaya Zemlya, and only two out of five reached Baffin Island. Icelandic observers did not report any years free of sea ice around Iceland and recorded several years with extensive sea ice. A few years, including 1602 and 1615, were notable for descriptions of severe sea ice in both ship observations and Icelandic records. Conditions around Spitsbergen and Bjørnøya remained variable.

Thus, results from historical observations support a change in sea-ice conditions during the early 17th century consistent with simulations of a post-eruption SPG slowdown. However, the precise timing of the sea-ice shift and its association with a change in SPG strength remain ambiguous. On the one hand, it could be the case that post-eruption cooling generated a short-term expansion in sea ice after 1600, including the severe conditions observed in 1602, and only then did an eruption-triggered SPG slowdown initiate a long-term change in sea-ice conditions. On the other hand, the apparent increase in sea ice in 1602–1620 with respect to the 1570–

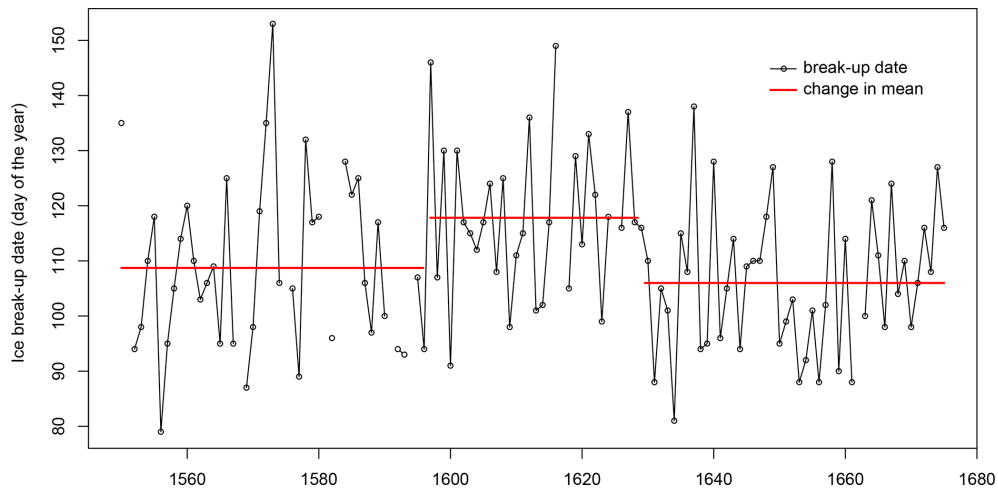


Figure 9. Tallinn ice breakup dates 1550–1670 and change points in mean.

Table 1. Summary of sea-ice observations from written sources. Numbers before years indicate months of year; su: summer (JAS). All dates converted to Gregorian calendar. Entries in italics indicate indirect observations or implied conditions based on information in chronicles. See Supplement for underlying sources and information.

Voyages of Exploration	Pre-eruption (1570–1600)		Post-eruption (1601–1620)	
	Dates passable	Dates impassable	Dates passable	Dates impassable
SE Greenland	6/1578, 7/1587	7/1576, su1577, 7/1585, 6–7/1586	–	6–7/1602, 6–7/1605, 6–7/1606, 6/1607, 6/1610, 5/1615
W Greenland	8/1585, 7/1586, 7/1587	9/1576	7/1605, 8/1606, 7/1616	–
Baffin	8/1576, su1577, 8/1585, 8–9/1586	7/1578	7/1610, 7/1611	7–8/1602, 7/1606, 8/1616
Labrador	su1577, 8/1586	7/1576	–	8/1602, 7/1606
W Novaya Zemlya	8/1596, 8/1597	7–8/1594	–	6–7/1608
Bjørnøya	–	6/1596	–	5/1612
Spitsbergen	–	6–7/1596	su1612	7/1607, su1614
Sea ice descriptions	Pre-eruption (1570–1600)		Post-eruption (1601–1620)	
	Light/no sea ice	Heavy/late sea ice	Light/no sea ice	Heavy/late sea ice
Iceland	1570, 1572, 1592, <i>early 1590s</i>	<i>1580s</i>	–	1602, 1604, 1605, 1608, 1612, 1615, 1618
Bjørnøya	(no data)		1603, 1608	1604, 1605, 1606, 1609
Spitsbergen	(no data)		1612, 1617, 1619	1611, 1614, 1615, 1616, 1618

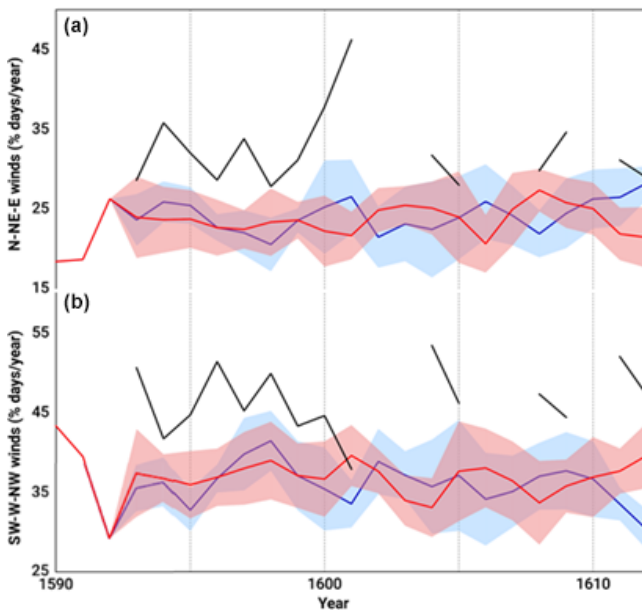


Figure 10. Percent of days in a year with winds predominantly from the north, northeast, and east (a) and from the southwest, west, and northwest (b) in the historical data (black) and in the MPI-ESM-P ensemble of simulations with and without a subpolar gyre (SPG) shift (blue and red, respectively; with the ensemble mean as the solid line and standard deviation in shading).

1590s would also be consistent with a pre-eruption onset of the SPG slowdown.

5 Discussion

5.1 The Huaynaputina eruption as a possible trigger of 17th-century persistent winter cooling

Our results, although consistent with the hypothesis that the Huaynaputina eruption triggered an SPG shift, do not provide additional support for this hypothesis. As discussed in Sect. 2, simulations with an SPG shift showed characteristic short-term summer cooling and long-term winter anomalies, including persistent cooling and sea-ice expansion. The large degree of short-term summer cooling in the NVOLC v2 reconstruction is similar to the mean of simulations with an SPG shift. Nevertheless, the spatial pattern of the anomaly differs between the reconstruction and those simulations. There are several possible sources for this discrepancy. The NVOLC v2 reconstruction has weaker spatial coverage in southeastern Europe, where some of the strongest differences appear (Guillet et al., 2017). The climate model necessarily simplifies climatic processes. Most importantly, this study has considered a relatively small ensemble size (10 realizations with volcanic forcing and 10 without) within a single model as well as a single reconstructed history of volcanic forcing. Beyond limitations due to the specificity of the chosen model and forcing, the ensemble size seems to be insuffi-

cient to encompass the range of possible climate responses to the Huaynaputina eruption that stems from their dependency on the initial state of the climate system at the time of the eruption.

Regarding winter anomalies, historical observations of North Sea wind direction indicated an unusually high frequency of winter northerly to easterly winds throughout the decade before and after 1600, especially in 1601. However, the series was too short and incomplete to demonstrate a long-term shift following the eruption. The Baltic harbor dates also indicated a short-term anomaly in 1601 as well as a multidecadal period of colder, icier conditions. However, the change point analysis indicates that this transition to colder, icier conditions began before the Huaynaputina eruption rather than several years following the eruption, as would have been expected with an eruption-triggered SPG shift. The historical observations of North Atlantic sea ice, taken in conjunction with previous paleoclimate studies discussed in Sect. 3.4, appear to confirm this timing. Observers found that icier conditions had already begun by ca. 1600, whereas we would expect those changes to have started only several years later if the Huaynaputina eruption had triggered those conditions through the SPG slowdown mechanism.

Therefore, the reconstructions are consistent with at least two climatic scenarios, each found in different sets of simulations. In the first scenario, the 1600 Huaynaputina eruption triggered the SPG slowdown, but the shift to colder and icier conditions in northern Europe and the North Atlantic had already begun by 1600 due to intrinsic climate variability or a different externally forced mechanism. This latter possibility stems from the fact that the 1600 Huaynaputina eruption was only the final eruption of a volcanic cluster that started in 1585. In the second scenario, the SPG slowdown commenced by 1600 without any role for the Huaynaputina eruption. Furthermore, it is possible that none of the simulations have reproduced the mechanism for persistent cooling that operated in the real world. Thus, our examination of high-resolution proxies and observations neither disproves nor confirms an eruption trigger for the previously proposed SPG-shift mechanism.

Our results, although inconclusive, suggest two ways forward. First, further comparison between high-resolution reconstructions and a larger ensemble of climate simulations could improve the chances for determining whether or not the 1600 Huaynaputina eruption triggered the SPG slowdown. With a larger ensemble, it may become possible to identify an initial seed for the SPG slowdown mechanism, since the signal-to-noise ratio of emergent features increases with the ensemble size. Identification of such an initial seed in proxy reconstructions and historical observations may enable more certain identification of an SPG slowdown and its causes than the attempts to find characteristic effects of such a slowdown in this study. This type of study may require large ensembles of simulations (20 members or more) in order to detect a clear signal for the onset and evolution of a climate mech-

anism above the noise of interannual climate variability. If a larger ensemble were insufficient to determine an initial seed, then a higher-resolution model might also prove necessary or else a model that could better represent the volcanic forcing (e.g., with updated aerosol parametrizations or updated volcanic forcing histories) and other external forcings (such as solar). Furthermore, with higher-resolution reconstructions, future studies might specify initial climate conditions in the model world closer to those of the real world.

Second, additional high-resolution climate proxies and historical records covering more locations in the North Atlantic could help determine whether anomalies during the late 1590s were indicative of an SPG slowdown preceding the 1600 Huaynaputina eruption. Moreover, forward modeling might be used to directly simulate additional proxies and conditions present to contemporary observers in order to provide stronger tests of an eruption trigger and SPG shift using historical climatology data. However, such modeling may have to take into account not only physical processes but human processes of observation, recording, and transmission.

The results also reveal strengths and weaknesses in the use of historical records to assess model-derived mechanisms of climate variability. Compared to proxies in natural archives, information drawn from archives of societies often has greater specificity and resolution but less continuity and homogeneity (Brönnimann et al., 2018). These sources may thus be more suitable for testing the presence of specific initial conditions than identifying spatial patterns in anomalies or long-term climatic trends, with the possible exception of very consistent and precise historical sources such as the Baltic harbor dates. Historical climatology may also contribute more to the analysis of climatic events and changes during the 18th and 19th centuries, for which there are more consistent and widespread historical observations, than those found in earlier centuries.

5.2 Implications for the history of climate and society

As described in the introduction, previous studies have identified widespread mortality crises and conflict in Europe during the 1590s and early 17th century associated with cool, wet summers and resulting harvest failures. Our results place the occurrence of these exceptionally cool summers in Europe and around the North Atlantic following the 1595 Nevado del Ruiz 1600 Huaynaputina eruptions into a wider context of climatic change. In addition, our results indicate the onset of colder winters and more sea ice in the North Atlantic by 1600 and lasting into the 1620s, thus preceding the eruption and persisting through and beyond the post-eruption summer cooling.

These long, cold, and snowy winters can affect human societies in many ways, especially in more marginal areas of agriculture. In areas where cattle were kept on winter pastures, such as parts of Ireland, severe winters could kill stock and reduce births (Ludlow and Crampsie, 2018). In addition,

in high-latitude and high-altitude agricultural areas where the animals had to be kept indoors over winter, such as northern Europe and the Alps, farmers may have run out of fodder during prolonged winter seasons, resulting in reduced dairy production or emergency sale or slaughter of animals (Soininen, 1974; Pfister, 2005). Long snowy winters also posed a risk to winter grains, since heavy long-lasting snow cover created optimal conditions for snow mold fungi (*Microdochium nivale*) to damage seedlings wintering under the snow cover (Pfister, 2005; Solantie, 2012). Furthermore, in northernmost Europe, increased snow depth and prolonged winter delayed the start of the growing season and thus postponed the harvest to less favorable times in late August or early September, when the first autumn frosts commonly occurred (Huhtamaa et al., 2015). In Finland, contemporaries witnessed this delay in 1601. That year, in southern parts of the country, the amount of harvested grain barely exceeded the amount sown, and further north the harvest was lost altogether due to the autumn frost (Voipio, 1914; Huhtamaa et al., 2020).

The agricultural hardships of the persistent winter cooling culminated in widespread famine in 1601 in the Swedish realm (roughly the areas of present-day Sweden, Finland, and Estonia) (Lilja, 2006; Seppel, 2014; Huhtamaa, 2018). However, the cold alone does not solely explain the human suffering, since the whole northern Baltic region experienced political instability and distress at this time. King Sigismund and Duke Charles fought over the throne in the late 16th century, western Finland underwent a peasant uprising (1596–1597), and Estonia was the battleground of warfare between Sweden and Poland from 1600–1611 (Seppel, 2014; Huhtamaa, 2018). These existing conditions increased social vulnerability across the Swedish realm and arguably exacerbated the human consequences.

Historical case studies demonstrate that these multi-decadal changes, characteristic of the SPG slowdown mechanism described in this study, also featured in societal impacts and adaptations in the Arctic. Extensive but fluctuating sea ice redirected expeditions led by captains such as Willem Barents and Henry Hudson towards lucrative sites for colonial exploitation, such as the bowhead whale feeding grounds off Svalbard and the Hudson River (Degroot, 2015a, b; White, 2017). When European whalers competed for access to preferred whaling locations along the coast of Svalbard and the relatively nearby island of Jan Mayen, extensive sea ice discouraged conflict by either separating whalers from one another or by concentrating bowhead pods in just a few of Svalbard's many bays (Degroot, 2020). In European waters, winter sea ice suffocated seaborne trade but provided new possibilities for transportation and encouraged new transportation technologies in the densely populated coastal regions of the Dutch Republic (Degroot, 2018). Recurring cold winters and sea-ice expansion had significant repercussions for early European colonization in eastern North America as well. Expeditions often arrived poorly supplied and vulnerable to extreme weather. Early and late

frosts limited planting and harvesting of crops; long freezes and snow cover limited foraging; and early winters and late springs made for long periods without fresh food, contributing to deadly outbreaks of scurvy. Attempted settlements at Tadoussac, Quebec (1601); St. Croix, Maine (1605); and Sagadahoc, Maine (1608) were each abandoned in less than 1 year after experiencing extremely cold winters. The first settlers at Jamestown, Virginia (1607), and Québec (1608) barely survived hunger and scurvy, respectively. The poor reputation of northern colonies as well as the expansion of sea ice and difficult sailing conditions may have diverted interest and investments into more southern colonies during the 17th century (White, 2017; Zilberstein, 2016). During the same period some indigenous nations of today's northeastern US and eastern Canada migrated south, while others adapted their hunting and horticulture to longer and colder winters (Hall, 2015; Wickman, 2018).

6 Conclusions

This study has examined high-resolution proxies and historical observations to investigate whether the 1600 Huaynaputina eruption triggered persistent cooling in the North Atlantic region by initiating an SPG slowdown mechanism identified in previous modeling studies. Although the high-resolution reconstructions and historical observations of summer and winter temperature, wind direction, and sea-ice extent are consistent with such an eruption-induced mechanism, the results are inconclusive, particularly since reconstructions and observations indicate that the onset of winter cooling and increased sea ice may have preceded the Huaynaputina eruption.

By identifying potential strengths and weaknesses in the use of historical climatology for testing model-derived climate mechanisms, our assessment may guide future research both for the specific case of the early 17th-century climate shift and for other episodes of paleoclimate variability. Our study underlines the potential of historical climatology to reconstruct highly resolved local climatic and environmental conditions relevant to studies of model-derived mechanisms. Moreover, the reconstructions and observations presented in this study have helped clarify human dimensions of climate variability during this period, including roles of short-term post-eruption anomalies as well as longer-term cooling and sea-ice expansion in societal impacts and adaptations.

Code and data availability. Code and model data to reproduce Figs. 1, 2, 3, 4, 7, 8, and 10 can be found at <https://doi.org/10.5281/zenodo.6417226> (Moreno-Chamarro, 2022). Underlying data for gridded temperatures (Fig. 6), sea ice breakup dates (Fig. 9), and North Sea wind direction (Fig. 10) are available in the published literature cited in the references. Underlying sources for sea ice observations (Table 1) are presented in the Supplement.

Supplement. The supplement related to this article is available online at: <https://doi.org/10.5194/cp-18-739-2022-supplement>.

Author contributions. SW, EMC, and DZ designed the study. EMC and DZ provided paleoclimate simulations and analysis. MS, CC, HH, SW, and DD provided paleoclimate data and historical observations. SW, DD, and HH provided societal impacts and adaptation analysis. All authors provided figures, discussed methods and results, and commented on the paper.

Competing interests. The contact author has declared that neither they nor their co-authors have any competing interests.

Disclaimer. Publisher's note: Copernicus Publications remains neutral with regard to jurisdictional claims in published maps and institutional affiliations.

Special issue statement. This article is part of the special issue "Interdisciplinary studies of volcanic impacts on climate and society". It is not associated with a conference.

Acknowledgements. This study is a product of the PAGES-VICS and PAGES-CRIAS working groups. We thank Astrid Ogilvie for providing information on Icelandic sea-ice observations and commenting on the paper.

Financial support. This research has been supported by the Swiss National Science Foundation (grant no. P2BEP1_175214), the Swiss National Science Foundation through the SNSF Sinergia CALDERA project (grant no. CRSII5_183571), the Spanish Science and Innovation Ministry (Ministerio de Ciencia e Innovación) through the STREAM project (grant no. PID2020-114746GBI00), Fonds de la Recherche Scientifique – FNRS and the FWO under the Excellence of Science (EOS) program through the PARAMOUR project (grant no. O0100718F, EOS ID no. 30454083), and the Georgetown Environment Initiative.

Review statement. This paper was edited by Kevin Anchukaitis and reviewed by R. Stockton Maxwell, Christian Pfister, Milos Rydval, and two anonymous referees.

References

- Adams, N. K., de Silva, S. L., Self, S., Salas, G., Schubring, S., Permenter, J. L., and Arbesman, K.: The physical volcanology of the 1600 eruption of Huaynaputina, southern Peru, *Bull. Volcanol.*, 62, 493–518, <https://doi.org/10.1007/s004450000105>, 2001.
- Akiander, M.: Utdrag ur ryska annaler, Suomi – Tidskrift i fosterländska ämnen, 8, 1–284, Helsingfors: Simelii arvingar, 1849.

- Alheit, J. and Hagen, E.: Long-Term Climate Forcing of European Herring and Sardine Populations, *Fish. Oceanogr.*, 6, 130–139, <https://doi.org/10.1046/j.1365-2419.1997.00035.x>, 1997.
- Anchukaitis, K. J., Wilson, R., Briffa, K., Büntgen, U., Cook, E. R., D'Arrigo, R. D., Davi, N., Esper, J., Frank, D., Gunnarson, B., Hegerl, G., Helama, S., Klesse, S., Krusic, P. J., Linderholm, H., Myglan, V., Osborn, T. J., Peng, Z., Rydval, M., Schneider, L., Schurer, A., Wiles, G., and Zorita, E.: Last millennium Northern Hemisphere summer temperatures from tree rings: Part II: spatially resolved reconstructions, *Quaternary Sci. Rev.*, 163, 1–22, <https://doi.org/10.1016/j.quascirev.2017.02.020>, 2017.
- Betin, V. V. and Preobrazhinski, J. V.: Kolebanija ledovosti Baltijskogo morja i datskiz prilivov, *Trudy Gosudarstvennogo Okeanograficheskogo Instituta*, 37, 3–13, 1959.
- Bittner, M., Schmidt, H., Timmreck, C., and Sienz, F.: Using a large ensemble of simulations to assess the Northern Hemisphere stratospheric dynamical response to tropical volcanic eruptions and its uncertainty, *Geophys. Res. Lett.*, 43, 9324–9332, <https://doi.org/10.1002/2016GL070587>, 2016.
- Born, A. and Stocker, T. F.: Two stable equilibria of the Atlantic subpolar gyre, *J. Phys. Oceanogr.*, 44, 246–264, 2014.
- Born, A., Stocker, T., Raible, C., and Levermann, A.: Is the Atlantic subpolar gyre bistable in comprehensive coupled climate models?, *Clim. Dynam.*, 40, 2993–3007, 2013.
- Briffa, K. R., Jones, P. D., Schweingruber, F. H., and Osborn, T. J.: Influence of Volcanic Eruptions on Northern Hemisphere Summer Temperature over the Past 600 Years, *Nature*, 393, 450–55, 1998.
- Brönnimann, S., Pfister, C., and White, S.: Archives of Nature and Archives of Societies, in: *The Palgrave Handbook of Climate History*, edited by: White, S., Pfister, C., and Mauelshagen, F., Palgrave Macmillan UK, London, 27–36, https://doi.org/10.1057/978-1-137-43020-5_3, 2018.
- Cabedo-Sanz, P., Belt, S. T., Jennings, A. E., Andrews, J. T., and Geirsdóttir, Á.: Variability in drift ice export from the Arctic Ocean to the North Icelandic Shelf over the last 8000 years: A multi-proxy evaluation, *Quaternary Sci. Rev.*, 146, 99–115, <https://doi.org/10.1016/j.quascirev.2016.06.012>, 2016.
- Chen, D. and Hellström, C.: The influence of the North Atlantic Oscillation on the regional temperature variability in Sweden: spatial and temporal variations, *Tellus A*, 51, 505–516, 1999.
- Christiansen, B.: Volcanic eruptions, large-scale modes in the Northern Hemisphere, and the El Niño–Southern Oscillation, *J. Climate*, 21, 910–922, <https://doi.org/10.1175/2007JCLI1657.1>, 2008.
- Clark, P. (Ed.): *The European Crisis of the 1590s: Essays in Comparative History*, Allen and Unwin, London, ISBN 9780049400740, 1985.
- Cook, E. R., Briffa, K. R., and Jones, P. D.: Spatial regression methods in dendroclimatology: a review and comparison of two techniques, *Int. J. Climatol.*, 14, 379–402, <https://doi.org/10.1002/joc.3370140404>, 1994.
- Cook, E. R., Meko, D., Stahle, D., and Cleaveland, M.: Drought Reconstructions for the Continental United States, *J. Climate*, 12, 1145–62, [https://doi.org/10.1175/1520-0442\(1999\)012<1145:DRFTCU>2.0.CO;2](https://doi.org/10.1175/1520-0442(1999)012<1145:DRFTCU>2.0.CO;2), 1999.
- Coupe, J. and Robock, A.: The influence of stratospheric soot and sulfate aerosols on the Northern Hemisphere winter-time atmospheric circulation, *J. Geophys. Res.-Atmos.*, 126, e2020JD034513, <https://doi.org/10.1029/2020JD034513>, 2021.
- Cowan, K. and Way, R.: Coverage Bias in the HadCRUT4 Temperature Series and Its Impact on Recent Temperature Trends, *Q. J. Roy. Meteor. Soc.*, 140, 1935–1944, <https://doi.org/10.1002/qj.2297>, 2014.
- D'Arrigo, R., Wilson, R., and Jacoby, G.: On the long-term context for late twentieth century warming, *J. Geophys. Res.-Atmos.*, 111, D03103, <https://doi.org/10.1029/2005JD006352>, 2006.
- D'Arrigo, R., Jacoby, G., Buckley, B., Sakulich, J., Frank, D., Wilson, R., Curtis, A., and Anchukaitis, K.: Tree growth and inferred temperature variability at the North American Arctic treeline, *Glob. Planet. Change*, 65, 71–82, <https://doi.org/10.1016/j.gloplacha.2008.10.011>, 2009.
- De Silva, S., Alzueta, J., and Salas, G.: The socioeconomic consequences of the A.D. 1600 eruption of Huaynaputina, southern Peru, in: *Special Paper 345: Volcanic Hazards and Disasters in Human Antiquity*, vol. 345, Geological Society of America, 15–24, <https://doi.org/10.1130/0-8137-2345-0.15>, 2000.
- De Silva, S. L. and Zielinski, G. A.: Global Influence of the AD 1600 Eruption of Huaynaputina, Peru, *Nature*, 393, 455–458, 1998.
- Degroot, D.: Exploring the North in a Changing Climate: The Little Ice Age and the Journals of Henry Hudson, 1607–1611, *Journal of Northern Studies*, 9, 69–91, 2015a.
- Degroot, D.: Testing the Limits of Climate History: The Quest for a Northeast Passage during the Little Ice Age, 1594–1597, *J. Interdiscipl. Hist.*, 45, 459–84, https://doi.org/10.1162/JINH_a_00755, 2015b.
- Degroot, D.: *The Frigid Golden Age: Climate Change, the Little Ice Age, and the Dutch Republic, 1560–1720*, Cambridge University Press, New York, ISBN 9781108410410, 2018.
- Degroot, D.: War of the Whales: Climate Change, Weather and Arctic Conflict in the Early Seventeenth Century, *Env. Hist.*, 26, 549–577, <https://doi.org/10.3197/096734019X15463432086801>, 2020.
- De Silva, S. L. and Zielinski, G. A.: Global Influence of the AD 1600 Eruption of Huaynaputina, Peru, *Nature*, 393, 455–458, 1998.
- Dobrovolný, P., Moberg, A., Brázdil, R., and Pfister, C.: Monthly, Seasonal and Annual Temperature Reconstructions for Central Europe Derived from Documentary Evidence and Instrumental Records since AD 1500, *Climatic Change*, 101, 69–107, <https://doi.org/10.1007/s10584-009-9724-x>, 2010.
- Dunning, C.: *Russia's First Civil War: The Time of Troubles and the Founding of the Romanov Dynasty*, Penn State University Press, College Station, ISBN 9780271020747, 2001.
- Eriksson, C., Omstedt, A., Overland, J. E., Percival, D., and Mofjeld, H.: Characterizing the European sub-Arctic winter climate since 1500 using ice, temperature, and atmospheric circulation time series, *J. Climate*, 20, 5316–5334, 2007.
- Gagné, M., Kirchmeier-Young, M., Gillett, N., and Fyfe, J.: Arctic sea ice response to the eruptions of Agung, El Chichón, and Pinatubo, *J. Geophys. Res.-Atmos.*, 122, 8071–8078, 2017.
- Gennaretti, F., Arseneault, D., Nicault, A., Perreault, L., and Bégin, Y.: Volcano-Induced Regime Shifts in Millennial Tree-Ring Chronologies from Northeastern North America, *P. Natl. Acad. Sci. USA*, 111, 10077–10082, <https://doi.org/10.1073/pnas.1324220111>, 2014.

- Global Volcanism Project: <https://volcano.si.edu/volcano.cfm?vn=354030>, last access: 30 June 2021.
- Guillet, S., Corona, C., Stoffel, M., Khodri, M., Lavigne, F., Ortega, P., Eckert, N., Sielenou, P. D., Daux, V., Churakova (Sidorova), O. V., Davi, N., Edouard, J.-L., Zhang, Y., Luckman, B. H., Myglan, V. S., Guiot, J., Beniston, M., Masson-Delmotte, V., and Oppenheimer, C.: Climate response to the Samalas volcanic eruption in 1257 revealed by proxy records, *Nat. Geosci.*, 10, 123–128, <https://doi.org/10.1038/ngeo2875>, 2017.
- Guillet, S., Corona, C., Ludlow, F., Oppenheimer, C., and Stoffel, M.: Climatic and societal impacts of a “forgotten” cluster of volcanic eruptions in 1108–1110 CE, *Sci. Rep.*, 10, 6715, <https://doi.org/10.1038/s41598-020-63339-3>, 2020.
- Hall, J.: Maliseet Cultivation and Climatic Resilience on the Westekw/St. John River During the Little Ice Age, *Acadiensis*, 44, 3–25, 2015.
- Hari, P., Aakala, T., Hilasvuori, E., Häkkinen, R., Korhola, A., Korpela, M., Linkosalo, T., Mäkinen, H., Nikinmaa, E., Nöjd, P., Seppä, H., Sulkava, M., Terhivuo, J., Tuomenvirta, H., Weckström, J., and Hollmén, J.: Reliability of temperature signal in various climate indicators from northern Europe, *PLoS ONE*, 12, e0180042, <https://doi.org/10.1371/journal.pone.0180042>, 2017.
- Helama, S., Stoffel, M., Hall, R. J., Jones, P. D., Arppe, L., Matskovsky, V. V., Timonen, M., Nöjd, P., Mielikainen, K., and Oinonen, M.: Recurrent transitions to Little Ice Age-like climatic regimes over the Holocene, *Clim. Dynam.*, 56, 3817–3833, <https://doi.org/10.1007/s00382-021-05669-0>, 2021.
- Hernández, A., Martín-Puertas, C., Moffa-Sánchez, P., Moreno-Chamarro, E., Ortega, P., Blockley, S., Cobb, K., Comas-Bru, L., Giral, S., Goosse, H., Luterbacher, J., Martrat, B., Muschel, R., Parnell, A., Pla-Rabes, S., Sjolte, J., Scaife, A., Swingedouw, D., and Xu, G.: Modes of Climate Variability: Synthesis and Review of Proxy-Based Reconstructions through the Holocene, *Earth-Sci. Rev.*, 209, 103286, <https://doi.org/10.1016/j.earscirev.2020.103286>, 2020.
- Holm, P., Ludlow, F., Scherer, C., Travis, C., Allaire, B., Brito, C., Hayes, P., Matthews, J., Rankin, K., Breen, R., Legg, R., Loughheed, K., and Nicholls, J.: The North Atlantic Fish Revolution (ca. AD 1500), *Quaternary Res.*, 1–15, <https://doi.org/10.1017/qua.2018.153>, 2019.
- Huhtamaa, H.: Combining written and tree-ring evidence to trace past food crises: A case study from Finland, in: *Famines during the “Little Ice Age” (1300–1800): Socionatural entanglements in premodern societies*, edited by: Collet, D. and Schuh, M., Springer, Cham, 43–66, ISBN 9783319543413, 2018.
- Huhtamaa, H. and Helama, S.: Distant impact: tropical volcanic eruptions and climate-driven agricultural crises in seventeenth-century Ostrobothnia, Finland, *J. Hist. Geogr.*, 57, 40–51, <https://doi.org/10.1016/j.jhg.2017.05.011>, 2017.
- Huhtamaa, H., Helama, S., Leijonhufvud, L., and Charpentier Ljungqvist, F.: Combining the archives of nature and society: tree rings and tithes, *Past Global Changes Magazine*, 28, 20–21, <https://doi.org/10.22498/pages.28.2.50>, 2020.
- Huhtamaa, H. M., Helama, S., Holopainen, J., Rethorn, C., and Rohr, C.: Crop Yield Responses to Temperature Fluctuations in 19th Century Finland: Provincial Variation in Relation to Climate and Tree Rings, *Boreal Environ. Res.*, 20, 707–723, <https://doi.org/10.7892/boris.70535>, 2015.
- Jara, L. A., Thouret, J.-C., and Dávila, J.: The AD 1600 Eruption of Huaynaputina as Described in Early Spanish Chronicles, *B. Soc. Geol. Perú*, 90, 121–32, 2000.
- Jevrejeva, S.: Severity of winter seasons in the northern Baltic Sea between 1529 and 1990: reconstruction and analysis, *Clim. Res.*, 17, 55–62, <https://doi.org/10.3354/cr017055>, 2001.
- Jevrejeva, S.: Association Between Ice Conditions in the Baltic Sea along the Estonian Coast and the North Atlantic Oscillation, *Hydrol. Res.*, 33, 319–330, <https://doi.org/10.2166/nh.2002.0011>, 2002.
- Killick, R. and Eckley, I.: Changepoint: An R package for change-point analysis, *J. Stat. Softw.*, 58, 1–19, 2014.
- Killick, R., Fearnhead, P., and Eckley, I.: Optimal detection of change-points with a linear computational cost, *J. Am. Stat. Assoc.*, 107, 1590–1598, 2012.
- Kolling, H. M., Stein, R., Fahl, K., Perner, K., and Moros, M.: Short-term variability in late Holocene sea ice cover on the East Greenland Shelf and its driving mechanisms, *Palaeogeogr. Palaeoclimatol.*, 485, 336–350, <https://doi.org/10.1016/j.palaeo.2017.06.024>, 2017.
- Koslowski, G. and Glaser, R.: Variations in Reconstructed Ice Winter Severity in the Western Baltic from 1501 to 1995, and their implications for the North Atlantic Oscillation, *Climatic Change*, 41, 175–191, <https://doi.org/10.1023/A:1005466226797>, 1999.
- Lamb, H. H.: *Volcanic Dust in the Atmosphere; with a Chronology and Assessment of Its Meteorological Significance*, *Phil. Trans. Royal. Soc. A*, 266, 425–533, 1970.
- Leijonhufvud, L., Wilson, R., and Moberg, A.: Documentary data provide evidence of Stockholm average winter to spring temperatures in the eighteenth and nineteenth centuries, *Holocene*, 18, 333–343, 2008.
- Leijonhufvud, L., Wilson, R., Moberg, A., Söderberg, J., Retsö, D., and Söderlind, U.: Five centuries of Stockholm winter/spring temperatures reconstructed from documentary evidence and instrumental observations, *Climatic Change*, 101, 109–141, <https://doi.org/10.1007/s10584-009-9650-y>, 2010.
- Lenke, W.: *Das Klima Ende des 16. und Anfang des 17. Jahrhunderts nach Beobachtungen von Tycho de Brahe auf Hven, Leonhard III. Treuttwein in Fürstenfeld und David Fabricius in Ostfriesland, Deutschen Wetterdienstes, Offenbach a.M.*, OCLC 164973905, 1968.
- Lilja, S.: Lokala klimatkriser och kronans intressen – en fallstudie av Södertörns kustsocknar ca. 1570–1620, in: *Människan anpassaren – människan överskridaren: Natur, bebyggelse och resurssutnyttjande från sen järnålder till 1700-tal med särskild hänsyn till östra Mellansverige och Södermanlands kust*, edited by: in Lilja, S., Södertörns högskola, Huddinge, 95–144, ISBN 9789189315617, 2006.
- Ludlow, F. and Crampsie, A.: Environmental History of Ireland, 1550–1730, in: *The Cambridge History of Ireland: Volume 2: 1550–1730*, vol. 2, edited by: Ohlmeyer, J., Cambridge University Press, Cambridge, 608–637, <https://doi.org/10.1017/9781316338773.027>, 2018.
- Luterbacher, J., Dietrich, D., Xoplaki, E., Grosjean, M., and Wanner, H.: European Seasonal and Annual Temperature Variability, Trends, and Extremes Since 1500, *Science*, 303, 1499–503, <https://doi.org/10.1126/science.1093877>, 2004.
- Massé, G., Rowland, S. J., Sicre, M.-A., Jacob, J., Jansen, E., and Belt, S. T.: Abrupt climate changes for Iceland dur-

- ing the last millennium: Evidence from high resolution sea ice reconstructions, *Earth Planet. Sc. Lett.*, 269, 565–69, <https://doi.org/10.1016/j.epsl.2008.03.017>, 2008.
- McCarroll, D., Loader, N. J., Jalkanen, R., Gagen, M. H., Grudd, H., Gunnarson, B. E., Kirchhefer, A. J., Friedrich, M., Linderholm, H. W., Lindholm, M., Boettger, T., Los, S. O., Remmele, S., Kononov, Y. M., Yamazaki, Y. H., Young, G. H. F., and Zorita, E.: A 1200-year multiproxy record of tree growth and summer temperature at the northern pine forest limit of Europe, Holocene, 23, 471–484, <https://doi.org/10.1177/0959683612467483>, 2013.
- Metzger, A. and Tabeaud, M.: Reconstruction of the winter weather in east Friesland at the turn of the sixteenth and seventeenth centuries (1594–1612), *Climatic Change*, 141, 331, <https://doi.org/10.1007/s10584-017-1903-6>, 2017.
- Michel, S., Swingedouw, D., Chavent, M., Ortega, P., Mignot, J., and Khodri, M.: Reconstructing climatic modes of variability from proxy records using ClimIndRec version 1.0, *Geosci. Model Dev.*, 13, 841–858, <https://doi.org/10.5194/gmd-13-841-2020>, 2020.
- Moreno-Chamarro, E.: Model data of White et al. (2022, *Climate of the Past*), Zenodo [data set], <https://doi.org/10.5281/zenodo.6417226>, 2022.
- Moreno-Chamarro, E., Zanchettin, D., Lohmann, K., and Jungclauss, J. H.: Winter amplification of the European Little Ice Age cooling by the subpolar gyre, *Sci. Rep.*, 7, 9981, <https://doi.org/10.1038/s41598-017-07969-0>, 2017a.
- Moreno-Chamarro, E., Zanchettin, D., Lohmann, K., and Jungclauss, J. H.: An abrupt weakening of the subpolar gyre as trigger of Little Ice Age-type episodes, *Clim. Dynam.*, 48, 727–744, <https://doi.org/10.1007/s00382-016-3106-7>, 2017b.
- Müller, J., Werner, K., Stein, R., Fahl, K., Moros, M., and Jansen, E.: Holocene cooling culminates in sea ice oscillations in Fram Strait, *Quaternary Sci. Rev.*, 47, 1–14, <https://doi.org/10.1016/j.quascirev.2012.04.024>, 2012.
- Ogilvie, A. E. J.: Documentary Evidence for Changes in the Climate of Iceland, A.D. 1500 to 1800, in: *Climate since A.D. 1500*, edited by: Bradley, R. S. and Jones, P. D., Routledge, London, 92–117, ISBN 9781134810369, 1995.
- Ogilvie, A. E. J.: Famines, mortality, livestock deaths and scholarship: Environmental stress in Iceland ca. 1500–1700, in: *The Dance of Death in Late Medieval and Renaissance Europe: Environmental Stress, Mortality and Social Response*, edited by: Kiss, A., and Pribyl, K., Taylor and Francis, 9–24, ISBN 9781032083391, 2019.
- Ogilvie, A. E. J.: Writing on Sea Ice: Icelandic Scholars of the Late Sixteenth and Early Seventeenth Century, in: *Ice Humanities: Materiality, Ontology and Representation*, edited by: Dodds, K., and Sörlin, S., in press, 2022.
- Ogilvie, A. E. J. and Jónsdóttir, I.: Sea Ice, Climate, and Icelandic Fisheries in the Eighteenth and Nineteenth Centuries, *Arctic*, 53, 383–394, <https://doi.org/10.14430/arctic869>, 2000.
- Ogilvie, A. E. J. and Jónsson, T.: “Little Ice Age” Research: A Perspective from Iceland, *Climatic Change*, 48, 9–52, 2001.
- Omstedt, A. and Chen, D.: Influence of atmospheric circulation on the maximum ice extent in the Baltic Sea, *J. Geophys. Res.-Oceans*, 106, 4493–4500, 2001.
- Ortega, P., Lehner, F., Swingedouw, D., Masson-Delmotte, V., Raible, C. C., Casado, M., and Yiou, P.: A model-tested North Atlantic Oscillation reconstruction for the past millennium, *Nature*, 523, 71–74, <https://doi.org/10.1038/nature14518>, 2015.
- Otterå, O. H., Bentsen, M., Drange, H., and Suo, L.: External forcing as a metronome for Atlantic multidecadal variability, *Nat. Geosci.*, 3, 688–694, <https://doi.org/10.1038/ngeo955>, 2010.
- Otto-Bliesner, B. L., Brady, E. C., Fasullo, J., Jahn, A., Landrum, L., Stevenson, S., Rosenbloom, N., Mai, A., and Strand, G.: Climate variability and change since 850 CE: An ensemble approach with the Community Earth System Model, *B. Am. Meteorol. Soc.*, 97, 735–754, <https://doi.org/10.1175/BAMS-D-14-00233.1>, 2016.
- Parker, G.: *Global Crisis: War, Climate Change and Catastrophe in the Seventeenth Century*, Yale University Press, New Haven, 850 pp., ISBN 9780300208634, 2013.
- Parker, G.: History and Climate: The Crisis of the 1590s Reconsidered, in: *Climate Change and Cultural Transition in Europe*, edited by: Leggewie, C., and Mauelshagen, F., Brill, Leiden, 119–155, ISBN 9789004356429, 2018.
- Pausata, F., Karamperidou, C., Caballero, R., and Battisti, D.: ENSO response to high-latitude volcanic eruptions in the Northern Hemisphere: the role of the initial conditions, *Geophys. Res. Lett.*, 43, 8694–8702, 2016.
- Pausata, F. S. R., Chafik, L., Caballero, R., and Battisti, D. S.: Impacts of high-latitude volcanic eruptions on ENSO and AMOC, *P. Natl. Acad. Sci. USA*, 112, 13784–13788, <https://doi.org/10.1073/pnas.1509153112>, 2015.
- Pfister, C.: Weeping in the Snow: The Second Period of Little Ice Age-type Impacts, 1570–1630, in: *Kulturelle Konsequenzen der Kleine Eiszeit*, edited by: Behringer, W., Lehmann, H., and Pfister, C., Vandenhoeck & Ruprecht, Göttingen, 31–86, ISBN 9783525358641, 2005.
- Pfister, C. and Wanner, H.: *Climate and Society in Europe: The Last Thousand Years*, Haupt Verlag, Bern, ISBN 9783258082349, 2021.
- Pfister, C. and White, S.: Evidence from the Archives of Societies: Personal Documentary Sources, in: *The Palgrave Handbook of Climate History*, edited by: White, S., Pfister, C., and Mauelshagen, F., Palgrave Macmillan UK, London, 49–65, https://doi.org/10.1057/978-1-137-43020-5_5, 2018.
- Pfister, C., Brázdil, R., Glaser, R., and Barriendos, M.: Documentary Evidence on Climate in Sixteenth Century Europe, *Climatic Change*, 43, 55–110, 1999.
- Pfister, C., Brázdil, R., Luterbacher, J., Ogilvie, A. E. J., and White, S.: Early Modern Europe, in: *The Palgrave Handbook of Climate History*, edited by: White, S., Pfister, C., and Mauelshagen, F., Palgrave Macmillan UK, London, 265–295, https://doi.org/10.1057/978-1-137-43020-5_23, 2018.
- Prival, J.-M., Thouret, J.-C., Japura, S., Gurioli, L., Bonadonna, C., Mariño, J., and Cueva, K.: New insights into eruption source parameters of the 1600 CE Huaynaputina Plinian eruption, Peru, *Bull. Volcanol.*, 82, 7, <https://doi.org/10.1007/s00445-019-1340-7>, 2019.
- Robock, A.: Volcanic Eruptions and Climate, *Rev. Geophys.*, 38, 191–219, 2000.
- Schneider, L., Smerdon, J. E., Buentgen, U., Wilson, R. J. S., Myglan, V. S., Kirilyanov, A. V., and Esper, J.: Revising midlatitude summer temperatures back to AD600 based on a wood density network, *Geophys. Res. Lett.*, 42, 4556–62, <https://doi.org/10.1002/2015GL063956>, 2015.

- Scott, A. and Knott, M.: A cluster analysis method for grouping means in the analysis of variance, *Biometrics*, 30, 507–512, 1974.
- Seppel, M.: 1601.–1603. aasta näljahäda Eestimaal 2. Asustuse vähenemine, näljaabi ja kannibalism, *Tuna*, 3, 25–43, 2014.
- Sigl, M., McConnell, J. R., Layman, L., Maselli, O., McGwire, K., Pasteris, D., Dahl-Jensen, D., Steffensen, J. P., Vinther, B., Edwards, R., Mulvaney, R., and Kipfstuhl, S.: A New Bipolar Ice Core Record of Volcanism from WAIS Divide and NEEM and Implications for Climate Forcing of the Last 2000 Years, *J. Geophys. Res.-Atmos.*, 118, 1151–1169, <https://doi.org/10.1029/2012JD018603>, 2013.
- Sigl, M., Winstrup, M., McConnell, J. R., Welten, K. C., Plunkett, G., Ludlow, F., Buentgen, U., Caffee, M., Chellman, N., Dahl-Jensen, D., Fischer, H., Kipfstuhl, S., Kostick, C., Maselli, O. J., Mekhaldi, F., Mulvaney, R., Muscheler, R., Pasteris, D. R., Pilcher, J. R., Salzer, M., Schuepbach, S., Steffensen, J. P., Vinther, B. M., and Woodruff, T. E.: Timing and climate forcing of volcanic eruptions for the past 2500 years, *Nature*, 523, 543–49, <https://doi.org/10.1038/nature14565>, 2015.
- Simón, P.: Noticias historiales de las conquistas de Tierra Firme en las Indias occidentales: partes segunda y tercera, Medardo Rivas, Bogota, Columbia, 410 pp., 1892.
- Soininen, A.: Vanha maataloutemme: Maatalous ja maatalousväestö Suomessa perinnäisen maatalouden loppukaudella 1720-luvulta 1870-luvulle, Suomen historiallinen seura, Helsinki, 459 pp., ISBN 9789519254043, 1974.
- Solantie, R.: Ilmasto ja sen määräämät luonnonolot Suomen asutuksen ja maatalouden historiassa (No. 196), University of Jyväskylä, Jyväskylä, 301 pp., ISBN 9789513950088, 2012.
- Stoffel, M., Khodri, M., Corona, C., Guillet, S., Poulain, V., Bekki, S., Guiot, J., Luckman, B. H., Oppenheimer, C., Lebas, N., Beniston, M., and Masson-Delmotte, V.: Estimates of volcanic-induced cooling in the Northern Hemisphere over the past 1500 years, *Nat. Geosci.*, 8, 784–88, <https://doi.org/10.1038/ngeo2526>, 2015.
- Tarand, A.: Ice-cover in the Baltic region and the air temperature of the Little Ice Age, in: Proceedings of the International Symposium on the Little Ice Age Climate, edited by: Mikami, T., Tokyo Metropolitan University, Tokyo, 94–100, OCLC 39718862, 1992.
- Tarand, A. and Nordli, P. O.: The Tallinn Temperature Series Reconstructed Back Half a Millennium by Use of Proxy Data, *Climatic Change*, 48, 189–99, 2001.
- Tarand, A., Jagus, J., and Kallis, A.: Eesti kliima minevikus ja tänapäeval, University of Tartu Press, Tartu, ISBN 9789949323241, 2013.
- Thompson, L. G., Mosley-Thompson, E., Davis, M. E., Zagorodnov, V. S., Howat, I. M., Mikhalevko, V. N., and Lin, P.-N.: Annually Resolved Ice Core Records of Tropical Climate Variability over the Past ~1800 Years, *Science*, 340, 945–950, <https://doi.org/10.1126/science.1234210>, 2013.
- Thouret, J.-C., Cantagrel, J. M., Salinas, R., and Murcia, A.: Quaternary Eruptive History of Nevado del Ruiz (Colombia), *J. Volcanol. Geoth. Res.*, 41, 225–251, [https://doi.org/10.1016/0377-0273\(90\)90090-3](https://doi.org/10.1016/0377-0273(90)90090-3), 1990.
- Thouret, J.-C., Juvigné, E., Gourgaud, A., Boivin, P., and Dávila, J.: Reconstruction of the AD 1600 Huaynaputina Eruption Based on the Correlation of Geologic Evidence with Early Spanish Chronicles, *J. Volcanol. Geoth. Res.*, 115, 529–570, [https://doi.org/10.1016/S0377-0273\(01\)00323-7](https://doi.org/10.1016/S0377-0273(01)00323-7), 2002.
- Timmreck, C.: Modeling the climatic effects of large explosive volcanic eruptions, *WIREs Clim. Change*, 3, 545–564, <https://doi.org/10.1002/wcc.192>, 2012.
- Toohey, M. and Sigl, M.: Volcanic stratospheric sulfur injections and aerosol optical depth from 500 BCE to 1900 CE, *Earth Syst. Sci. Data*, 9, 809–831, <https://doi.org/10.5194/essd-9-809-2017>, 2017.
- Toohey, M., Krüger, K., Schmidt, H., Timmreck, C., Sigl, M., Stoffel, M., and Wilson, R.: Disproportionately strong climate forcing from extratropical explosive volcanic eruptions, *Nat. Geosci.*, 12, 100–107, <https://doi.org/10.1038/s41561-018-0286-2>, 2019.
- Utterström, G.: Climatic fluctuations and population problems in early modern history, *Scandinavian Economic History Review*, 3, 3–47, <https://doi.org/10.1080/03585522.1955.10411467>, 1955.
- Verosub, K. L. and Lippman, J.: Global Impacts of the 1600 Eruption of Peru's Huaynaputina Volcano, *Eos Trans. AGU*, 89, 141–142, <https://doi.org/10.1029/2008EO150001>, 2008.
- Voipio, V.: Katovuosi vaikutuksineen 1601 Varsinais-Suomessa, *Hist. Arkist.*, 24, 1–37, 1914.
- White, S.: A Cold Welcome: The Little Ice Age and Europe's Encounter with North America, Harvard University Press, Cambridge, MA, ISBN 9780674244900, 2017.
- Wickman, T.: Narrating Indigenous Histories of Climate Change in the Americas and Pacific, in: The Palgrave Handbook of Climate History, edited by: White, S., Pfister, C., and Mauelshagen, F., Palgrave Macmillan UK, London, 387–411, https://doi.org/10.1057/978-1-137-43020-5_30, 2018.
- Wilson, R., Anchukaitis, K., Briffa, K. R., Büntgen, U., Cook, E., D'Arrigo, R., Davi, N., Esper, J., Frank, D., Gunnarson, B., Hegerl, G., Helama, S., Klesse, S., Krusic, P. J., Linderholm, H. W., Myglan, V., Osborn, T. J., Rydval, M., Schneider, L., Schurer, A., Wiles, G., Zhang, P., and Zorita, E.: Last millennium northern hemisphere summer temperatures from tree rings: Part I: The long term context, *Quaternary Sci. Rev.*, 134, 1–18, <https://doi.org/10.1016/j.quascirev.2015.12.005>, 2016.
- Zanchettin, D.: Aerosol and Solar Irradiance Effects on Decadal Climate Variability and Predictability, *Current Climate Change Reports*, 3, 150–162, <https://doi.org/10.1007/s40641-017-0065-y>, 2017.
- Zanchettin, D., Timmreck, C., Graf, H.-F., Rubino, A., Lorenz, S., Lohmann, K., Krüger, K., and Jungclaus, J. H.: Bi-Decadal Variability Excited in the Coupled Ocean–Atmosphere System by Strong Tropical Volcanic Eruptions, *Clim. Dynam.*, 39, 419–44, <https://doi.org/10.1007/s00382-011-1167-1>, 2012.
- Zanchettin, D., Timmreck, C., Bothe, O., Lorenz, S. J., Hegerl, G., Graf, H.-F., Luterbacher, J., and Jungclaus, J. H.: Delayed Winter Warming: A Robust Decadal Response to Strong Tropical Volcanic Eruptions?, *Geophys. Res. Lett.*, 40, 204–209, <https://doi.org/10.1029/2012GL054403>, 2013.
- Zanchettin, D., Timmreck, C., Toohey, M., Jungclaus, J., Bitner, M., Lorenz, S., and Rubino, A.: Clarifying the Relative Role of Forcing Uncertainties and Initial-Condition Unknowns in Spreading the Climate Response to Volcanic Eruptions, *Geophys. Res. Lett.*, 46, 1602–1611, <https://doi.org/10.1029/2018GL081018>, 2019.
- Zhong, Y., Miller, G. H., Otto-Bliesner, B. L., Holland, M. M., Bailey, D. A., Schneider, D. P., and Geirsdottir, A.: Centennial-Scale

- Climate Change from Decadally-Paced Explosive Volcanism: A Coupled Sea Ice-Ocean Mechanism, *Clim. Dynam.*, 37, 2373–2387, <https://doi.org/10.1007/s00382-010-0967-z>, 2011.
- Zhong, Y., Jahn, A., Miller, G. H., and Geirsdottir, A.: Asymmetric Cooling of the Atlantic and Pacific Arctic During the Past Two Millennia: A Dual Observation-Modeling Study, *Geophys. Res. Lett.*, 45, 12497–12505, <https://doi.org/10.1029/2018GL079447>, 2018.
- Zilberstein, A.: *A Temperate Empire: Making Climate Change in Early America*, Oxford University Press, New York, 280 pp., ISBN 9780190055516, 2016.