



Article scientifique

Article

2009

Published version

Open Access

This is the published version of the publication, made available in accordance with the publisher's policy.

---

## "Taste Strips" - a rapid, lateralized, gustatory bedside identification test based on impregnated filter papers

---

Landis, Basile Nicolas; Welge-Luessen, Antje; Bramerson, Annika; Bende, Mats; Mueller, Christian Albert;  
Nordin, Steven; Hummel, Thomas

### How to cite

LANDIS, Basile Nicolas et al. 'Taste Strips' - a rapid, lateralized, gustatory bedside identification test based on impregnated filter papers. In: Journal of neurology, 2009, vol. 256, n° 2, p. 242–248. doi: 10.1007/s00415-009-0088-y

This publication URL: <https://archive-ouverte.unige.ch/unige:19910>

Publication DOI: [10.1007/s00415-009-0088-y](https://doi.org/10.1007/s00415-009-0088-y)

Basile Nicolas Landis  
Antje Welge-Luessen  
Annika Brämerson  
Mats Bende  
Christian Albert Mueller  
Steven Nordin  
Thomas Hummel

## “Taste Strips” – A rapid, lateralized, gustatory bedside identification test based on impregnated filter papers

Received: 26 February 2008  
Received in revised form: 19 July 2008  
Accepted: 14 August 2008  
Published online: 7 February 2009

T. Hummel  
Smell & Taste Clinic  
Department of Otorhinolaryngology  
University of Dresden Medical School,  
(“Technische Universität Dresden”)  
Dresden, Germany

B. N. Landis (✉)  
Département des Neurosciences cliniques  
Unité de Rhinologie-Olfactologie  
Service d’Oto-Rhino-Laryngologie  
Hôpitaux Universitaires de Genève  
Rue Micheli-du-Crest 24  
1211 Geneva, Switzerland  
Tel.: +41/22-382-3423  
Fax: +41/22-372-8240  
E-Mail: Basile.Landis@hcuge.ch

A. Welge-Luessen  
Dept. of Otorhinolaryngology  
University of Basel  
Basel, Switzerland

A. Brämerson · M. Bende  
Dept. of Otorhinolaryngology  
Central Hospital  
Skövde, Sweden

C. A. Mueller  
Dept. of Otorhinolaryngology  
Medical University of Vienna  
Vienna, Austria

S. Nordin  
Dept. of Psychology  
University of Umea, Sweden

■ **Abstract** *Objective* To elaborate normative values for a clinical psychophysical taste test (“Taste Strips”). *Background* The “Taste Strips” are a psychophysical chemical taste test. So far, no definitive normative data had been published and only a fairly small sample size has been investigated. In light of this shortcoming for this easy, reliable and quick taste testing device, we attempted to provide normative values suitable for the clinical use. *Setting* Normative value acquisition study, multicenter study. *Methods* The investigation involved 537 participants reporting a normal sense of smell and taste (318 female, 219 male, mean age 44 years, age range 18–87 years). The taste test was based on spoon-shaped filter paper strips (“Taste Strips”) impregnated with the four (sweet, sour, salty, and bitter) taste qualities in four different concentrations. The strips were placed on

the left or right side of the anterior third of the extended tongue, resulting in a total of 32 trials. With their tongue still extended, patients had to identify the taste from a list of four descriptors, i.e., sweet, sour, salty, and bitter (multiple forced-choice). To obtain an impression of overall gustatory function, the number of correctly identified tastes was summed up for a “taste score”. *Results* Taste function decreased significantly with age. Women exhibited significantly higher taste scores than men which was true for all age groups. The taste score at the 10<sup>th</sup> percentile was selected as a cut-off value to distinguish normogeusia from hypogeusia. Results from a small series of patients with ageusia confirmed the clinical usefulness of the proposed normative values. *Conclusion* The present data provide normative values for the “Taste Strips” based on over 500 subjects tested.

■ **Key words** Taste Strips · normative · taste, gustatory · test · lateralization · quantitative · clinical

## Introduction

In contrast to olfaction, which recognizes innumerable odorants, taste, which recognizes only a few basic tastes, has always been considered a less complex sense. Clinically, this has mainly been based on the few cases of gustatory disorders seen in outpatient clinics compared to those presenting with olfactory problems [6]. However, since molecular biology permitted the discovery of a fifth taste [4], which is monosodium glutamate and the decoding of large parts of the taste receptor logic [3], this sense has increasingly drawn the medical community's attention to it [42]. Recent studies even implicate taste receptor variants to influence the risk of alcohol dependence [18] or myocardial infarction [41]. Taken together, taste receptors and their functionality might be relevant for more than only the pleasantness perceived during eating and drinking.

Thus, the necessity of clinical assessment of human chemical gustatory function should not be a matter of debate. However, in contrast to clinical olfactory testing, where numerous validated tests exist (e.g., [11, 23]), most gustatory testing devices are based on liquid dilutions [15, 16, 27], tablets [1] or edible wafers [19], which are either not commercially available or lack available normative data. Furthermore, most test procedures are whole mouth tests and do not allow the assessment of single gustatory nerve afferents such as lateralized testing or testing of the anterior two-thirds of the tongue, innervated by the chorda tympani versus the rear of the tongue innervated by the glossopharyngeal nerve.

A recently proposed test device based on ideas by Kobal, called "Taste Strips", tried to overcome these shortcomings by using filter papers impregnated with tastants (for details see [36]). The spoon-shaped filter papers can be applied selectively to specific areas of the tongue. The shelf life is much longer than that of liquid solutions. Although this test has already resulted in a series of publications [14, 22, 34, 36, 39] and was proven reliable concerning the investigation of tongue side differences [21,

29] and gustatory testing before and after an intervention [30, 37], the initially proposed test procedure had some shortcomings. First, the paper by Mueller et al. [36] was based on solely 69 observations. Second, Mueller et al. [36] did not use a forced choice testing paradigm, but all the authors who consecutively used the "Taste Strips" did so.

The aim of the present study was thus to provide normative data for the "Taste Strips" for both, lateralized and whole mouth testing based on a forced choice paradigm and on a larger number of observations. To this end, we investigated 537 healthy subjects using different concentrations of the four basic tastes (sweet, sour, salty, and bitter). Umami was not included, because this taste concept has been found to be difficult to explain to the European population tested.

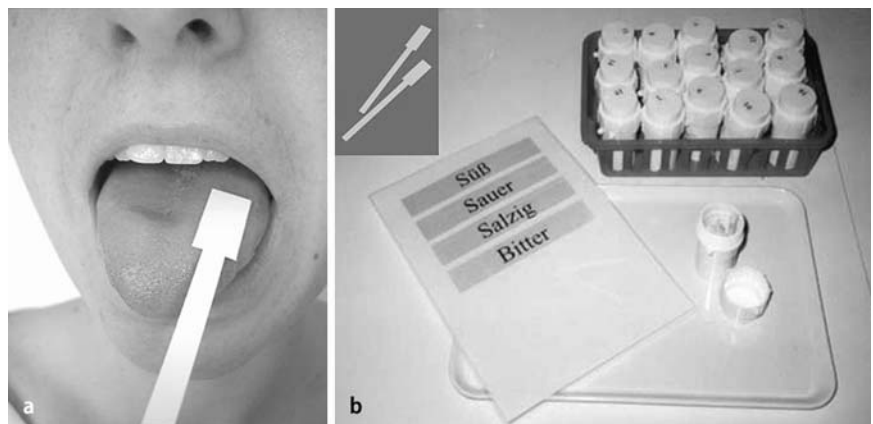
## Material and methods

The current multicenter study was conducted according to the guidelines of the Declaration of Helsinki on Biomedical Research Involving Human Subjects. The investigation involved 537 participants reporting a normal sense of smell and taste (318 female, 219 male, mean age 44 years, age range 18–87 years). One hour prior to testing subjects were asked not to eat or drink anything except water, not to smoke, and not to brush their teeth. Subjects with severe diseases that might affect taste perception (e.g., chronic renal failure or middle ear affections) were not included in the investigation.

The taste test was based on filter paper strips [36] ("Taste Strips", Burghart, Wedel, Germany), with a length of 8 cm and a tip area of 2 cm<sup>2</sup> being impregnated with tastant (4 concentrations each of the 4 basic taste qualities). The following concentrations were used for the taste strips: sweet: 0.4, 0.2, 0.1, 0.05 g/ml sucrose; sour: 0.3, 0.165, 0.09, 0.05 g/ml citric acid; salty: 0.25, 0.1, 0.04, 0.016 g/ml sodium chloride; bitter: 0.006, 0.0024, 0.0009, 0.0004 g/ml quinine hydrochloride. Distilled water was used as solvent; taste solutions were prepared freshly in regular intervals.

The strips were placed on the left or right side of the anterior third of the extended tongue, resulting in a total of 32 trials (Fig. 1). Before each administration of a strip, the mouth was rinsed with water. The tastes were presented in increasing concentrations. Taste qualities were applied in a randomized fashion at each of the four levels of concentration and alternating the side of presentation. With their tongue still extended, patients had to identify the taste from a list of

**Fig. 1** **A** Testing procedure of the Taste Strips, with the subject being tested with the tongue kept outside while choosing the presented taste quality from a descriptor list. **B** Example of the Taste Strips kept in different boxes separately for the different concentrations used, with a picture of the taste strips in the left corner



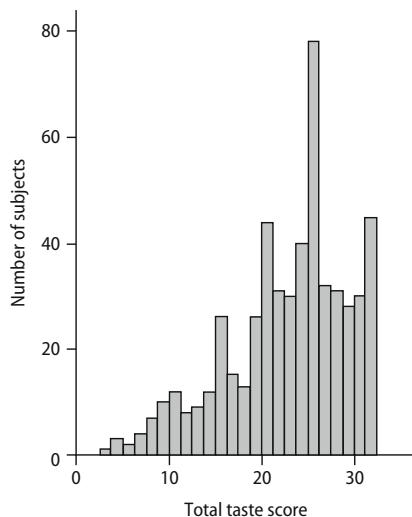
four descriptors, i.e., sweet, sour, salty, and bitter (multiple forced-choice). To obtain an impression of overall gustatory function, the number of correctly identified tastes per side was added up to a “taste score” [36]. Both, scores of the left and right side yielded the total number identified tastants. The whole testing procedure for the 4 tastants typically required approximately 20 minutes for lateralized (right and left side separately) testing. Details of the individual taste qualities can easily be obtained when the data are analyzed by the proposed “Taste Strip” software ([http://www.tu-dresden.de/med-khno/riechen\\_schmecken/download.htm](http://www.tu-dresden.de/med-khno/riechen_schmecken/download.htm)), which can be downloaded for free.

### Statistical analysis

SPSS 12.0 (SPSS Inc., Chicago, IL., USA) was employed for statistical evaluation. Age-related differences were investigated for three groups: (18–40 years ( $n = 225$ , 141 f, 84 m), 41–60 years ( $n = 206$ , 122 f, 84 m), older than 60 years ( $n = 106$ , 55 f, 51 m)). An analyses of variance for repeated measures (rm-ANOVA) was used with between subjects factors “side of stimulation” (left, right), and between subject factors “sex” (female (f;  $n = 318$ ), male (m;  $n = 219$ )) and “age group” (18–40 years, 41–60 years, > 60 years). Bonferroni tests were used for post hoc comparisons. Correlational analyses were performed using Pearson statistics. The alpha level was set at 0.05.

## Results

The distribution of taste scores across the investigated subjects is shown in Fig. 2. Taste function decreased with age ( $F(2, 531) = 45.3$ ,  $p < 0.001$ ) which was also confirmed by a significant correlation between the subjects’ age and overall taste scores ( $r_{537} = -0.39$ ,  $p < 0.001$ ). In addition, women exhibited higher taste scores than men ( $F(1, 531) = 26.9$ ,  $p < 0.001$ ) which was true for all age groups as indicated by the missing interaction between factors “age group” and “sex” ( $p = 0.20$ ) (Tables 1 and 2; Fig. 3). There were no significant differences with regard to re-



**Fig. 2** Distribution of taste scores in the investigated population. Thirty-nine of the 537 subjects (7.3%) had scores of 11 or less indicating severely compromised gustatory function although subjects rated their sense of taste as normal

**Table 1** Distribution of taste scores separately for scores obtained for the left and right side, plus results for the total score in relation to the three age groups (means, standard deviation)

	left side	right side	total score
<b>Age: 18–40 years (<math>n = 225</math>)</b>			
mean	12.7	12.8	25.5
SD	2.8	2.9	5.2
Minimum	1	2	3
Maximum	16	16	32
Percentile			
10 <sup>th</sup>	9	9	19
25 <sup>th</sup>	11	11	22
50 <sup>th</sup>	13	13	26
75 <sup>th</sup>	15	15	29
90 <sup>th</sup>	16	16	32
<b>Age: 41–60 years (<math>n = 206</math>)</b>			
mean	10.7	11.0	21.4
SD	3.4	3.3	6.6
Minimum	1	2	4
Maximum	16	16	32
Percentile			
10 <sup>th</sup>	6	6	11.7
25 <sup>th</sup>	8	9	17
50 <sup>th</sup>	11	12	23
75 <sup>th</sup>	13	13.5	26
90 <sup>th</sup>	15	15	29
<b>Age: &gt; 60 years (<math>n = 106</math>)</b>			
mean	9.7	9.8	19.4
SD	3.3	3.5	6.3
Minimum	2	2	4
Maximum	15	16	31
Percentile			
10 <sup>th</sup>	5	5	9
25 <sup>th</sup>	8	8	15
50 <sup>th</sup>	10	10	20
75 <sup>th</sup>	12	12	24
90 <sup>th</sup>	14	14	27

sults obtained on the left and the right side of the tongue.

In terms of the definition of hypogeusia the 10<sup>th</sup> percentile from subjects aged between 18 and 40 years was used to separate normogeusic from hypogeusic subjects (compare [10, 23]). Thus, women with a score of 19 and higher can be regarded as normogeusic, while this score is 17 in men. The scores for the other age groups and for gender differences are detailed in Tables 1 and 2.

With regard to differences between the left and right side of the tongue, the 90<sup>th</sup> percentile in subjects aged 18–40 years was 3.3, indicating that pathological differences can be suspected from a score difference of more than 3 between the left and right side of the tongue (Fig. 4).

During clinical testing we also encountered ten patients with ageusia due to various reasons (Table 3). These patients claimed not to be able to taste any of the four basic tastes. This was ascertained by administration

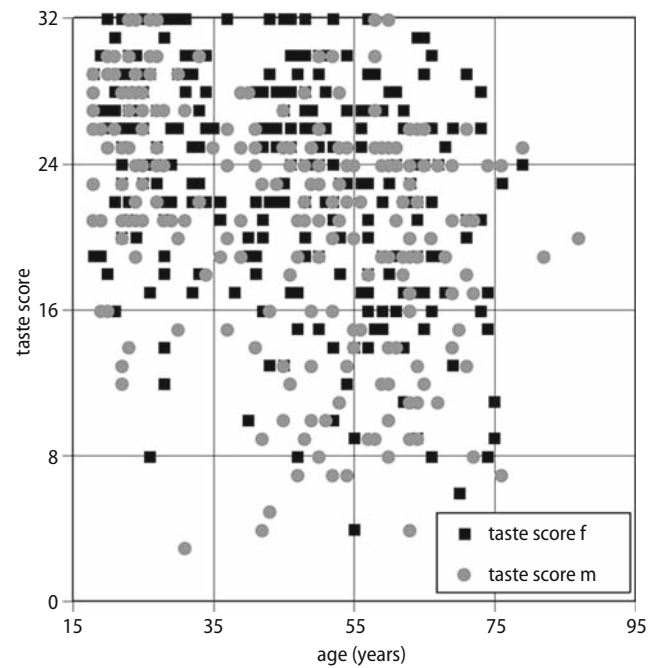
**Table 2** Distribution of total taste scores (left and right side together) separately for men and women in relation to the three age groups (means, standard errors of means, minima, maxima, percentiles)

	Women	Men
<b>Age: 18–40 years</b>		
	<i>n</i> = 141	<i>n</i> = 84
mean	26.3	24.3
SD	5.1	5.3
Minimum	8	3
Maximum	32	32
Percentile		
10 <sup>th</sup>	19	17
25 <sup>th</sup>	23	21
50 <sup>th</sup>	27	25
75 <sup>th</sup>	30	28
90 <sup>th</sup>	32	30
<b>Age: 41–60 years</b>		
	<i>n</i> = 122	<i>n</i> = 84
mean	23.0	19.1
SD	5.7	7.1
Minimum	4	4
Maximum	32	32
Percentile		
10 <sup>th</sup>	15	9
25 <sup>th</sup>	19	13
50 <sup>th</sup>	24	21
75 <sup>th</sup>	27	24.75
90 <sup>th</sup>	30	27
<b>Age: &gt; 60 years</b>		
	<i>n</i> = 55	<i>n</i> = 51
mean	20.6	18.2
SD	6.5	5.9
Minimum	6	4
Maximum	31	26
Percentile		
10 <sup>th</sup>	10.2	9
25 <sup>th</sup>	16	13
50 <sup>th</sup>	22	19
75 <sup>th</sup>	26	24
90 <sup>th</sup>	28.4	25

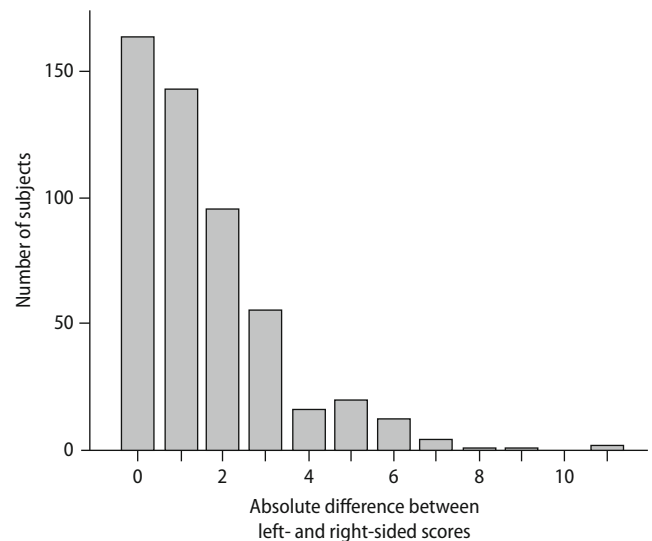
of a screening test for the four basic tastes presented at suprathreshold concentrations as proposed by the Working Group on Taste and Smell of the German ENT Society (<http://www.uni-duesseldorf.de/awmf/II/017-052.htm>). When the taste strips were administered the average total taste score was 7.4 (range 4–11) which was well below the scores established to separate normogeusia from hypogeusia/ageusia (see above).

## Discussion

The present study provides normative data for a rapid gustatory identification test. This psychophysical bedside test further allows easy and quick lateralized taste testing as well as whole mouth assessment. Since tastants are presented on impregnated filter paper (“Taste



**Fig. 3** Results obtained with the Taste Strips in relation to age, separately for men (black squares) and women (grey dots)



**Fig. 4** Distribution of absolute taste score differences between the left and right anterior tongue side. A total side difference of more than three points lies outside of the range of the 90<sup>th</sup> percentile and is regarded to indicate lateralized taste dysfunction

Strips”), shelf life is longer than that of liquid taste solutions. Major findings of this study were that taste function (1) decreases with age and (2) is higher in women compared to men. Further, the postulated cut-off values separating normal gustatory function from altered gustatory function could successfully confirm ageusia or hypogeusia in the included patients (*n* = 10). Finally, the



**Table 3** Characteristics of patients with ageusia

Patient Number	Age (years)	Sex	Cause	Taste strip score (total)
1	43	Female	Idiopathic	11
2	57	Female	Stroke	8
3	67	Female	Dental surgery	8
4	63	Male	General surgery	6
5	53	Male	Idiopathic	6
6	48	Male	Postviral	5
7	64	Female	Lichen Ruber	8
8	52	Male	Idiopathic	4
9	56	Male	Ear surgery	9
10	55	female	Idiopathic	9

present results give normative taste data and define a range of gustatory differences between each side of the tongue.

The present normative data for the “Taste Strips” are based on a high number of tested subjects ( $n = 548$ ). This is by far the largest series published for this test, and to the best of our knowledge also one of the largest series of psychophysical taste testing [12, 16, 25, 44, 45]. In contrast to a previous report [36] on the “Taste Strips”, these values have been acquired with a forced choice testing procedure. Although this seems to be a minor detail, the forced choice testing procedure has the clinical advantage to potentially detect subjects who aggravate or pretend to suffer from ageusia as they are not unlikely to give more wrong answers on purpose, thus ending up with a taste score below chance level. For the same reason, a forced choice paradigm has also been the standard for odor identification tests for over 20 years [11]. The major advantage of forced choice testing, however, is the control of the subjects’ response bias. This means that some patients would never give an answer other than “no taste detected” if they were allowed to respond so. If these patients are forced to select a response it is frequently possible to detect some remnants of gustatory function.

The presented normative values refer solely to the anterior two-thirds of the tongue (the area innervated by the chorda tympani). In contrast to the rear of the tongue, the anterior parts can be stimulated easily in most subjects without triggering major gag reflexes. Thus, we restricted the present study to the anterior two-thirds of the tongue because it has the highest density of taste buds [3], is easily accessible and is most often implicated in taste dysfunction [32, 33]. Nevertheless, posterior lingual taste testing is feasible with the taste strips [37] but not all patients tolerate this testing well.

The present application of the “Taste Strips” thus represents a semi-quantitative, accurate, quick and easy tool for chemical taste-specific screening. Previous at-

tempts of easy and quick clinical taste testing have resulted in the creation of electrogustometry [25], which has been used frequently [40, 43, 47]. Electrogustometry has proven useful to monitor changes before and after oral surgery and to detect side differences of the tongue’s taste function. However, this method has the limitation that the elicited “taste” is described as metallic or in best case as “sour”, as electric stimulation does not convincingly produce perceptions such as sweet, salty, umami, or bitter [46]. Although this is not a major shortcoming, it makes future investigations on the particular taste qualities difficult. This was one of the main reasons why we emphasized chemical taste testing. An isolated loss of sweet taste [17] could, thus, be overlooked by electrogustometry. Therefore, in a clinical context chemical and, thus, specific gustatory stimulation including all four taste qualities seem preferable as opposed to electrogustometry. Investigating the individual taste qualities with an identification tool also has difficulties, since some individuals constantly mistake sour for bitter and vice versa [36]. Thus, individual taste blindness may have to be considered with caution when interpreting taste test scores. In fact, it appears useful to do a screening test for the four basic tastes presented at supra-threshold concentrations as was proposed by the Working Group on Taste and Smell of the German ENT Society (<http://www.uni-duesseldorf.de/awmf/ll/017-052.htm>).

The presently proposed normal values are defined as “Taste Strip” scores above the 10<sup>th</sup> percentile of a group of healthy subjects. Further differentiation between ageusia and hypogeusia is not possible based solely on the ten patients investigated. For this purpose a larger number of patients with documented ageusia (e.g., bilateral chorda severing during ear surgery) would have to be studied albeit such cases are rare. It was interesting to note that 42 of the 528 subjects (7.95%) had Taste Strip scores of 11 or less which was in the range of scores produced by patients with ageusia. These taste scores indicated severely compromised gustatory function although subjects rated their sense of taste as normal. This confirms the observation by Soter and colleagues that taste self ratings do not reflect the measured taste function [44]. Because testing was performed in the anterior portion of the extended tongue, one explanation may relate to the idea that taste receptors in other areas of the oral cavity may allow for a normal taste function [35]. Consequently, clinical testing should not only rely on the localized testing of gustatory function, but should also include, in cases of doubt, whole mouth testing, e.g., using liquids [13].

Our study further confirmed previous findings on a decrease of gustatory function with increasing age. This could be demonstrated by a wide variety of approaches to gustatory function [1, 12, 19, 36, 38, 45]. Accordingly, the presented normative values are presented in an age-related manner.

Results from the present study also suggested that women exhibit higher gustatory sensitivity than men which has also already been described [1, 5, 8, 12, 19, 20, 36, 38, 45]. In contrast to what Fikentscher et al. [12] found, this gender-related effect was found in all age groups. Similar findings have been reported for the other chemical sense, olfaction, where women also outperform men [9, 48]. The exact reason of female superiority in olfaction and taste remains unexplained. One possible explanation relates to a hormonal influence on the chemical senses and their postulated protective effect on at least the sense of smell [2, 7, 31]. In contrast to olfactory function, taste function seems to be more influenced by hormonal changes as shown during pregnancy [24]. Clinically the better taste function in women is reflected by higher normative values at any age.

Since many clinically encountered taste disorders oc-

cur unilaterally, due to surgery [32], tumors [26], strokes [14, 33] or inflammatory diseases [28, 29], the possibility of a lateralized bedside gustatory testing seems diagnostically valuable.

In conclusion, the present data further underline the clinical usefulness of the "Taste Strips" and provide normative data which should facilitate the interpretation of "Taste Strips" scores in routine clinical practice.

■ **Conflict of interest** The authors declare no conflict of interest.

■ **Acknowledgment** This work was supported by a grant from the National ENT Research Fund, Sweden to AB, MB, Steven Nordin (Dept. of Psychology, University of Umea, Sweden), and TH, and by grants from the Neuroscience Center of the University of Geneva, and of the Swiss National Fund for Scientific Research (SSMBS grant no PASMA-119579/1 to BNL).

## References

- Ahne G, Erras A, Hummel T, Kobal G (2000) Assessment of gustatory function by means of tasting tablets. *Laryngoscope* 110:1396–1401
- Caruso S, Grillo C, Agnello C, Di Mari L, Farina M, Serra A (2004) Olfactometric and rhinomanometric outcomes in post-menopausal women treated with hormone therapy: a prospective study. *Hum Reprod* 19: 2959–2964
- Chandrashekar J, Hoon MA, Ryba NJ, Zuker CS (2006) The receptors and cells for mammalian taste. *Nature* 444:288–294
- Chaudhari N, Landin AM, Roper SD (2000) A metabotropic glutamate receptor variant functions as a taste receptor. *Nat Neurosci* 3:113–119
- Chauhan J (1989) Relationships between sour and salt taste perception and selected subject attributes. *J Am Diet Assoc* 89:652–658
- Deems DA, Doty RL, Settle RG, Moore-Gillon V, Shaman P, Mester AF, Kimmelman CP, Brightman VJ, Snow JB Jr (1991) Smell and taste disorders, a study of 750 patients from the University of Pennsylvania Smell and Taste Center. *Arch Otolaryngol Head Neck Surg* 117:519–528
- Dhong HJ, Chung SK, Doty RL (1999) Estrogen protects against 3-methylindole-induced olfactory loss. *Brain Res* 824:312–315
- Doty RL (1978) Gender and reproductive state correlates of taste perception in humans. In: McGill TE, Dewsbury DA, Sachs BD (eds) *Sex and behaviour: status and prospectus*. Plenum, New York, pp 337–362
- Doty RL, Shaman P, Applebaum SL, Giberson R, Siksorski L, Rosenberg L (1984) Smell identification ability: changes with age. *Science* 226: 1441–1443
- Doty RL, Shaman P, Dann M (1984) Development of the University of Pennsylvania Smell Identification Test: a standardized microencapsulated test of olfactory function. *Physiol Behav* 32:489–502
- Doty RL, Shaman P, Kimmelman CP, Dann MS (1984) University of Pennsylvania Smell Identification Test: a rapid quantitative olfactory function test for the clinic. *Laryngoscope* 94:176–178
- Fikentscher R, Roseburg B, Spinar H, Bruchmuller W (1977) Loss of taste in the elderly: sex differences. *Clin Otolaryngol Allied Sci* 2:183–189
- Gudziol H, Hummel T (2006) Normative values for the assessment of gustatory function using liquid tastants. *Acta Oto-Laryngologica* 127(6): 658–661
- Heckmann JG, Stossel C, Lang CJ, Neundorfer B, Tomandl B, Hummel T (2005) Taste disorders in acute stroke: a prospective observational study on taste disorders in 102 stroke patients. *Stroke* 36:1690–1694
- Henkin RI, Christiansen RL (1967) Taste localization on the tongue, palate, and pharynx of normal man. *J Appl Physiol* 22:316–320
- Henkin RI, Gill JR, Bartter FC (1963) Studies on taste thresholds in normal man and in patients with adrenal cortical insufficiency: the role of adrenal cortical steroids and the serum sodium concentration. *J Clin Invest* 42: 727–735
- Henkin RI, Shallenberger RS (1970) Aglycogeusia: the inability to recognize sweetness and its possible molecular basis. *Nature* 227:965–966
- Hinrichs AL, Wang JC, Bufe B, Kwon JM, Budde J, Allen R, Bertelsen S, Evans W, Dick D, Rice J, Foroud T, Nurnberger J, Tischfield JA, Kuperman S, Crowe R, Hesselbrock V, Schuckit M, Almasy L, Porjesz B, Edenberg HJ, Begleiter H, Meyerhof W, Bierut LJ, Goate AM (2006) Functional Variant in a Bitter-Taste Receptor (hTAS2R16) Influences Risk of Alcohol Dependence. *Am J Hum Genet* 78:103–111
- Hummel T, Erras A, Kobal G (1997) A test for the screening of taste function. *Rhinology* 35:146–148
- Hyde RJ, Feller RP (1981) Age and sex effects on taste of sucrose, NaCl, citric acid and caffeine. *Neurobiol Aging* 2: 315–318
- Just T, Pau HW, Bombor I, Guthoff RF, Fietkau R, Hummel T (2005) Confocal microscopy of the peripheral gustatory system: comparison between healthy subjects and patients suffering from taste disorders during radiochemotherapy. *Laryngoscope* 115:2178–2182
- Kamel UF (2004) Hypogeusia as a complication of uvulopalatopharyngoplasty and use of taste strips as a practical tool for quantifying hypogeusia. *Acta Otolaryngol* 124:1235–1236

23. Kobal G, Klimek L, Wolfensberger M, Gudziol H, Temmel A, Owen CM, Seeber H, Pauli E, Hummel T (2000) Multicenter investigation of 1,036 subjects using a standardized method for the assessment of olfactory function combining tests of odor identification, odor discrimination, and olfactory thresholds. *Eur Arch Otorhinolaryngol* 257:205–211
24. Kolble N, Hummel T, von Mering R, Huch A, Huch R (2001) Gustatory and olfactory function in the first trimester of pregnancy. *Eur J Obstet Gynecol Reprod Biol* 99:179–183
25. Krarup B (1958) Electro-Gustometry: A method for clinical taste examinations. *Acta Otolaryngol* 49:294–305
26. Krarup B (1959) Electrogustometric examinations in cerebellopontine tumors and on taste pathways. *Neurology* 9:53–61
27. Krarup B (1958) On the technique of gustatory examinations. *Acta Otolaryngol* 49:195–200
28. Krarup B (1958) Taste reactions of patients with Bell's palsy. *Acta Otolaryngol* 49:389–399
29. Landis BN, Beutner D, Frasnelli J, Huttenbrink KB, Hummel T (2005) Gustatory Function in Chronic Inflammatory Middle Ear Diseases. *Laryngoscope* 115:1124–1127
30. Landis BN, Giger R, Dulguerov P, Hugentobler M, Hummel T, Lacroix JS (2007) Gustatory function after microlaryngoscopy. *Acta Otolaryngol* 127:1086–1090
31. Landis BN, Konnerth CG, Hummel T (2004) A Study on the Frequency of Olfactory Dysfunction. *Laryngoscope* 114:1764–1769
32. Landis BN, Lacroix JS (2006) Postoperative/Posttraumatic gustatory dysfunction. In: Hummel T, Welge-Luessen A (eds) *Taste and Smell. An Update (Adv Otorhinolaryngol.)*. Karger, Basel, pp 242–254
33. Landis BN, Leuchter I, San Millan Ruiz D, Lacroix JS, Landis T (2006) Transient hemiageusia in cerebrovascular lateral pontine lesions. *J Neurol Neurosurg Psychiatry* 77:680–683
34. Lang CJ, Leuschner T, Ulrich K, Stossel C, Heckmann JG, Hummel T (2006) Taste in dementing diseases and parkinsonism. *J Neurol Sci* 248:177–184
35. Lehman CD, Bartoshuk LM, Catalanotto FC, Kveton JF, Lowlicht RA (1995) Effect of anesthesia of the chorda tympani nerve on taste perception in humans. *Physiol Behav* 57:943–951
36. Mueller C, Kallert S, Renner B, Stiassny K, Temmel AF, Hummel T, Kobal G (2003) Quantitative assessment of gustatory function in a clinical context using impregnated "taste strips". *Rhinology* 41:2–6
37. Mueller CA, Khatib S, Landis BN, Temmel AF, Hummel T (2007) Gustatory function after tonsillectomy. *Arch Otolaryngol Head Neck Surg* 133: 668–671
38. Nakazato M, Endo S, Yoshimura I, Tomita H (2002) Influence of aging on electrogustometry thresholds. *Acta Otolaryngol Suppl*:16–26
39. Nordin S, Bramerson A, Bringlov E, Kobal G, Hummel T, Bende M (2007) Substance and tongue-region specific loss in basic taste-quality identification in elderly adults. *Eur Arch Otorhinolaryngol* 264:285–289
40. Sakagami M, Sone M, Tsuji K, Fukazawa K, Mishiroy Y (2003) Rate of recovery of taste function after preservation of chorda tympani nerve in middle ear surgery with special reference to type of disease. *Ann Otol Rhinol Laryngol* 112:52–56
41. Shiffman D, Ellis SG, Rowland CM, Malloy MJ, Luke MM, Iakoubova OA, Pullinger CR, Cassano J, Aouizerat BE, Fenwick RG, Reitz RE, Catanese JJ, Leong DU, Zellner C, Sninsky JJ, Topol EJ, Devlin JJ, Kane JP (2005) Identification of four gene variants associated with myocardial infarction. *Am J Hum Genet* 77:596–605
42. Simon SA, de Araujo IE, Gutierrez R, Nicolelis MA (2006) The neural mechanisms of gustation: a distributed processing code. *Nat Rev Neurosci* 7:890–901
43. Sone M, Sakagami M, Tsuji K, Mishiroy Y (2001) Younger patients have a higher rate of recovery of taste function after middle ear surgery. *Arch Otolaryngol Head Neck Surg* 127: 967–969
44. Soter A, Kim J, Jackman A, Tourbier I, Kaul A, Doty RL (2008) Accuracy of Self-Report in Detecting Taste Dysfunction. *Laryngoscope* 118(4): 611–617
45. Stevens DA, Lawless HT (1981) Age-related changes in flavor perception. *Appetite* 2:127–136
46. Stillman JA, Morton RP, Hay KD, Ahmad Z, Goldsmith D (2003) Electrogustometry: strengths, weaknesses, and clinical evidence of stimulus boundaries. *Clin Otolaryngol* 28: 406–410
47. Tomofuji S, Sakagami M, Kushida K, Terada T, Mori H, Kakibuchi M (2005) Taste disturbance after tonsillectomy and laryngomicrosurgery. *Auris Nasus Larynx* 32:381–386
48. Yousem DM, Maldjian JA, Siddiqi F, Hummel T, Alsop DC, Geckle RJ, Bilker WB, Doty RL (1999) Gender effects on odor-stimulated functional magnetic resonance imaging. *Brain Res* 818: 480–487