



Article scientifique

Article

2008

Accepted version

Open Access

This is an author manuscript post-peer-reviewing (accepted version) of the original publication. The layout of the published version may differ .

---

## Why can pulmonary vein stenoses created by radiofrequency catheter ablation worsen during and after follow-up? A potential explanation

---

Doriot, Pierre-André; Dorsaz, Pierre-André; Shah, Dipen

### How to cite

DORIOT, Pierre-André, DORSAZ, Pierre-André, SHAH, Dipen. Why can pulmonary vein stenoses created by radiofrequency catheter ablation worsen during and after follow-up? A potential explanation. In: Journal of cardiothoracic surgery, 2008, vol. 3, p. 24. doi: 10.1186/1749-8090-3-24

This publication URL: <https://archive-ouverte.unige.ch/unige:1087>

Publication DOI: [10.1186/1749-8090-3-24](https://doi.org/10.1186/1749-8090-3-24)

Research article

Open Access

## Why can pulmonary vein stenoses created by radiofrequency catheter ablation worsen during and after follow-up ? A potential explanation

Pierre-André Doriot\*, Pierre-André Dorsaz and Dipen Chandrakant Shah

Address: Cardiology Department, University Hospital of Geneva, Geneva, Switzerland

Email: Pierre-André Doriot\* - pierre-andre.doriot@hcuge.ch; Pierre-André Dorsaz - pierre-andre.dorsaz@hcuge.ch;  
Dipen Chandrakant Shah - dipen.shah@hcuge.ch

\* Corresponding author

Published: 5 May 2008

Received: 3 April 2007

*Journal of Cardiothoracic Surgery* 2008, **3**:24 doi:10.1186/1749-8090-3-24

Accepted: 5 May 2008

This article is available from: <http://www.cardiothoracicsurgery.org/content/3/1/24>

© 2008 Doriot et al; licensee BioMed Central Ltd.

This is an Open Access article distributed under the terms of the Creative Commons Attribution License (<http://creativecommons.org/licenses/by/2.0>), which permits unrestricted use, distribution, and reproduction in any medium, provided the original work is properly cited.

### Abstract

**Background:** Radiofrequency catheter ablation of excitation foci inside pulmonary veins (PV) generates stenoses that can become quite severe during or after the follow-up period. Since severe PV stenoses have most often disastrous consequences, it would be important to know the underlying mechanism of this temporal evolution. The present study proposes a potential explanation based on mechanical considerations.

**Methods:** we have used a mathematical-physical model to examine the cyclic increase in axial wall stress induced in the proximal (= upstream), non-stenosed segment of a stenosed pulmonary vein during the forward flow phases. In a representative example, the value of this increase at peak flow was calculated for diameter stenoses (DS) ranging from 1 to 99%.

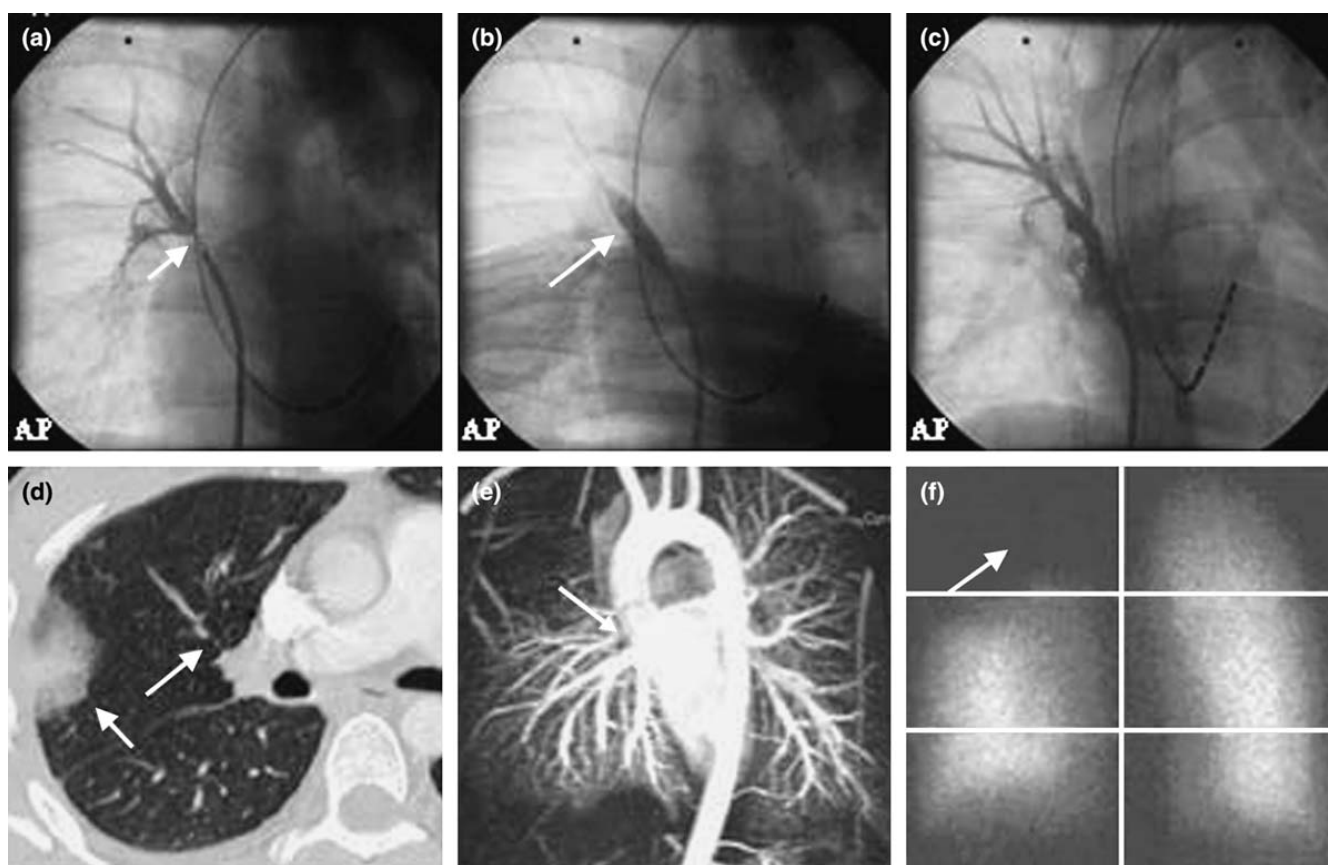
**Results:** The increase becomes appreciable at a DS of roughly 30% and rise then strongly with further increasing DS value. At high DS values (e.g. > 90%) the increase is approximately twice the value of the axial stress present in the PV during the zero-flow phase.

**Conclusion:** Since abnormal wall stresses are known to induce damages and abnormal biological processes (e.g., endothelium tears, elastic membrane fragmentations, matrix secretion, myofibroblast generation, etc) in the vessel wall, it seems plausible that the supplementary axial stress experienced cyclically by the stenotic and the proximal segments of the PV is responsible for the often observed progressive reduction of the vessel lumen after healing of the ablation injury. In the light of this model, the only potentially effective therapy in these cases would be to reduce the DS as strongly as possible. This implies most probably stenting or surgery.

### Introduction

Radiofrequency (RF) catheter ablation of excitation foci in extraparenchymal pulmonary veins (PV), or electrical isolation of these veins from the left atrium, is increasingly applied to suppress atrial fibrillation (AF). However, several studies have shown that these techniques sometimes

create severe stenoses or even total occlusions in the concerned veins [1-14]. Fig. 1 shows such a stenosis; further illustrations can be found for instance in ref. [2] or on the Web. The stenosis rates reported in the literature vary from 0 percents to more than 40% [6-9,15-18]. These discrepancies are considerable but have actually simple causes: a)

**Figure 1**

Images of a right superior pulmonary vein stenosis (Reproduced with permission from ref. [14]): (a) Angiographic view of the high grade stenosis (arrow). (b) Balloon dilatation (arrow). (c) Result after dilatation and stenting. (d) Pre-interventional computed tomographic scanning of the stenosis (arrow), including infiltration in the dependent lung lobe (arrow). (e) Three-dimensional magnetic resonance reconstruction of the stenosis (arrow). (f) Lung scan showing perfusion deficit in the right upper field (arrow).

The definition of "stenosis" is not the same in all studies (e.g. > 25, 30, 50, or even 70% diameter reduction) [16-18]. b) The stenosis rate is sometimes defined per patient instead of per treated PV [6,17]. c) The severity of the created stenoses depends on many parameters, such as number of ablated foci, extent of the treated intraluminal zone, number and duration of the ablation pulses, temperature and temperature distribution generated by the RF-field in the vessel wall, etc. d) Stenoses without clinical repercussions remain undiscovered if specific examinations (CT, MRI, or echocardiography) are not performed. e) Many stenoses are misdiagnosed even when the clinical symptoms are evident [10,17,19]. f) Stenoses are underreported [19]. Arentz et al. for instance found that the rate of PV stenosis (defined as > 50% diameter reduction) is considerably higher than the rate suggested by clinical assessments [7]. In their study, only 3 patients out of 47 had symptoms suggestive of PV stenosis, whereas systematic surveillance by transoesophageal Doppler-echo and/

or magnetic resonance imaging revealed PV stenosis or complete occlusion in 13 patients (28%).

The presence of an important PV stenosis at follow-up is always a serious complication because of the progressive repercussions these stenoses can have on pulmonary circulation. It is indeed well known in corrective cardiovascular surgery that the evolution of patients presenting congenital PV stenoses is practically never favorable, due (mainly) to the progression of stenosis severity with the years [20,21]. This probably also applies to some stenoses created by RF ablation. Several authors have indeed reported a progression of PV stenoses during follow-up [4,6-9,12-14]. For instance, Taylor et al. measured PV stenoses angiographically in dogs at intervals of 2 to 4 weeks, 6 to 8 weeks, or 10 to 14 weeks, and observed an increase of stenosis severity with time [4]. Similarly, Arentz et al. performed angiographic and MRI measurements in humans 2 years after a RF ablation procedure

and came to the same conclusion [7]. Some moderate stenoses may, however, also be smaller at follow-up than shortly after the procedure. This is of course not surprising because the inflammatory processes induced by the thermal injury in the vessel wall [8] will ultimately vanish. Nevertheless, it is obvious that the creation of PV stenoses by the radio frequency ablation process is an important issue, even if the true rate is not exactly known, and even if this latter were of only a few percents.

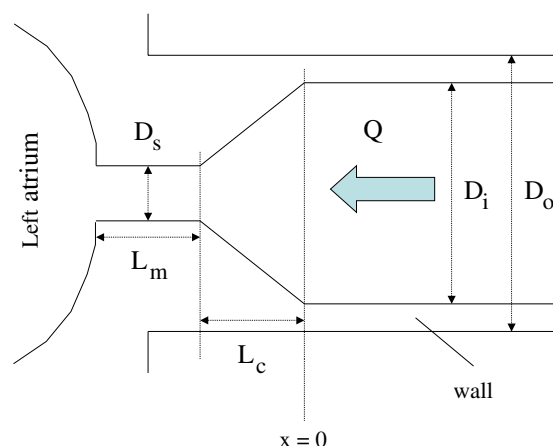
Today, the risk of creating a severe PV stenosis is still non negligible despite the methodological progresses accomplished in the late four years. It is therefore important to find out why PV stenoses usually do not regress, and why many will even progress. The phenomenon responsible for the apparition of a stenosis during or shortly after the intervention has been elucidated and does not seem to play a role in the late evolution of PV stenoses [10,15,22]. The late evolution has also been studied, but only from a phenomenological point of view [4]. We could not find any potential explanation of the cause of this evolution, despite an extensive literature search.

A well-known effect a severe stenosis has on the affected vessel is, of course, the cyclic (and sometimes also chronic) pressure rise that is generated in the vascular net upstream of the stenosis. This pressure increase induces media and intima thickening (among else), and may ultimately lead to pulmonary insufficiency. Wall thickening can be attributed to the changes in circumferential wall stress induced by the cyclic or chronic increase of the intravascular pressure but these stress changes cannot well explain why stenoses do not regress or even progress. Moreover, PV stenoses are not likely to induce high circumferential stresses in the upstream vessels because the increase in capacitance of the pulmonary venous net during systole (which is roughly equal to the stroke volume) is due to a deformation of the lumens from a slit form into a circular one, and not to a circumferential elongation of the vein walls [23]. In contrast thereto, a cyclic increase of axial wall stress in the vein segment situated upstream of the stenosis, generated by this stenosis during the (forward) flow phases, might play a still unsuspected role. In this contribution, we propose a potential explanation for the progression of PV stenoses that based on this effect of stenoses on axial wall stress. Thereby, the main aspect is not the mathematical-physical model we used but the conclusions it leads to.

## Methods

### The model

We consider a stenosis on a PV. For simplicity, this stenosis is assumed to be at the vein ostium (Fig. 2). The basic idea is that stenoses pull at the proximal (undiseased) vessel segment during the (forward) venous flow phases,



**Figure 2**

Schematic illustration of the considered pulmonary vein stenosis. Since the dominant parameter from a hemodynamical-mechanical point of view is the lumen reduction, this drawing is also valid for stenoses with a different morphology.

increasing thus the axial wall stress in this vessel segment cyclically beyond its "normal" value. In the following, this "normal" stress is considered to be constant throughout the cardiac cycle, and to have roughly the value it had in the undiseased vein. Thus, the supplementary axial stress generated cyclically by the stenosis adds to the "normal" stress. "Peak flow" will denote peak venous flow through the corresponding lung lobe.

We want to estimate the increase in axial wall stress at the stenosis entrance (cross section  $x = 0$  in Fig. 2) at peak flow, and to compare this increase to "normal" axial stress. Thereto, we have to calculate the pressure drop ( $\Delta P$ ) across the stenosis at peak flow, and the resulting axial force  $F$  in the wall cross section  $x = 0$ . Division of this force  $F$  by the cross sectional area of the wall yields then the supplementary axial stress generated by the stenosis. We consider the situation at peak flow because  $F$  is approximately maximal at that time, due to the fact that the pressure drop across the stenosis is maximal at that time.

The pressure drop  $\Delta P$  can be calculated using formulae proposed by Back et al. [24] (See Appendix). One has to know thereto the inner vessel diameter ( $D_i$ , see Fig. 2), the minimum inner diameter ( $D_s$ ) (or, alternatively, the degree of stenosis  $DS$ ), the respective lengths of constriction cone ( $L_c$ ) and stenosis throat ( $L_m$ ), the blood density ( $\rho$ ), the blood viscosity ( $\eta$ ), and the peak flow ( $Q$ ).

Since flow  $Q$  depends on the pressure available to drive the blood through the considered lung lobe and the stenosis, on the hemodynamical resistance  $R$  of this lobe at

peak (venous) flow, and on the resistance opposed by the stenosis, the value of  $Q$  cannot be chosen freely, except for  $DS = 0\%$ . We make therefore use of the facts that the pattern of flow in the large extraparenchymal PV is pulsatile, and that the pulsatility is dominated by the changes in left atrial pressure that take place throughout the cardiac cycle. These facts were demonstrated by Rajagopalan et al. [23] who also pointed out that all venous flow curves recorded in their experiments resembled inverted left atrial pressure curves. Based on these observations, we can approximate the relationship between pressures and peak flow in the considered lung lobe by the two equations:

$$P_{PA} - P_{LA} = Q_0 R_0 \text{ and } P_{PA} - P_{LA} = Q R + \Delta P(Q).$$

$P_{PA}$  is the value of pulmonary arterial pressure at the time of minimal left atrial pressure  $P_{LA}$ . Based on the several pressure curves displayed in publications of the same authors [23,25,26], we take the pressure  $P_{PA}$  equal to the mean pulmonary artery pressure. The difference  $P_{PA} - P_{LA}$  is thus the driving pressure at the time of peak flow.  $Q_0$  is the peak flow one would have at that time in absence of the stenosis ( $DS = 0\%$ ), and  $R_0$  is the hemodynamical resistance of the considered lung lobe for this flow (and at that time).  $Q$  is the actual peak flow when the stenosis is present ( $DS > 0\%$ ); it depends, of course, on the corresponding hemodynamical resistance  $R$  of the considered lobe. According to Rajagopalan et al. [25,26], all involved pulmonary arteries, arterioles, capillaries, venules, and veins have a more or less circular cross section at peak flow. At that time, pulmonary resistance is therefore minimal. Since pulmonary veins do not have appreciable vasoconstriction capabilities, and since they are also relatively inextensible [27], we can assume for simplicity that  $R$  has the same value for all  $DS$  that will be considered (1% to 99% diameter reduction). We set thus  $R = R_0$  for all  $DS$  values. The last term of the second equation, the pressure drop  $\Delta P(Q)$ , is a function of flow  $Q$ , as already mentioned.

These equations, together with the formulas of Back et al. [24], lead to a quadratic equation that allows to calculate flow  $Q$  for any given  $DS$  value (Equation 8 in the Appendix). The freely choosable parameters are: the pressures  $P_{PA}$  and  $P_{LA}$ , peak flow  $Q_0$ , the blood density and viscosity, and the stenosis geometry. The corresponding value of force  $F$  is then calculated using the corresponding pressure drop  $\Delta P(Q)$ , the pressure  $P_{LA}$ , and the formulae of Back et al. The calculation is rather complex and is described in detail in [28].

Since there is no evidence that stenoses induce a permanent axial elongation of the affected PV, there is no reason to assume that axial stress in the wall cross section  $x = 0$  decreases below the "normal" value during flow diastole.

Consequently, one can consider that axial wall stress is simply the sum of "normal" axial stress and supplementary axial stress, as assumed above.

Finally, we can also calculate the ratio "increased axial wall stress over normal axial wall stress" at the entrance of the stenosis. Contrary to absolute stress values, this ratio does not depend on the actual area value of the wall cross section.

### Numerical example

In this section, we consider for illustration a representative PV, and we use the model described in the preceding section to calculate the cyclic increase in axial wall stress that can be expected at the entrance of the stenosis for  $DS$  values ranging from 1% and 99%.

Based on the literature we chose for the parameters needed for the calculation of the pressure drop  $\Delta P$  a normal inner diameter ( $D_i$ ) of 10 mm at the stenosis entrance [7,8,14,27,29] and a maximal flow velocity (over the lumen) of 60 cm/s at peak flow  $Q_0$  ( $DS = 0\%$ ) [5,14,15,18,30,31]. Assuming that the velocity profile at peak flow is parabolic in absence of a stenosis, the value of  $Q_0$  is then 23.6 ml/s.

As already explained in the preceding section, we also assume that the resistance  $R (= R_0)$  of the considered lung lobe is independent of the  $DS$ , and that it is equal, at peak flow, to the product "mean pulmonary artery pressure ( $P_{PA}$ ) minus minimal left atrial pressure ( $P_{LA}$ )" times "flow  $Q_0$ ". With  $P_{PA} = 20$  mmHg and  $P_{LA} = 0$  mmHg (see [32], p. 1700)], we have thus  $R = (P_{PA} - P_{LA})/Q_0 = 20$  mmHg/23.6 ml/s. Introduction of this value into equation 8 allows to calculate then peak flow  $Q$  through the considered lung lobe in dependence of the  $DS$  value (1% to 99%).

For the calculation of the axial wall force  $F$  associated to a particular  $DS$  value, we use the value of peak flow  $Q$  calculated for this  $DS$  value, and we determine the corresponding pressure drop  $\Delta P(Q)$  across the stenosis. We add then  $\Delta P(Q)$  to the minimal left atrial pressure  $P_{LA}$  (0 mmHg) to obtain the pressure at the stenosis entrance at peak flow  $Q$ . The value of  $F$  is then obtained as described in [28].

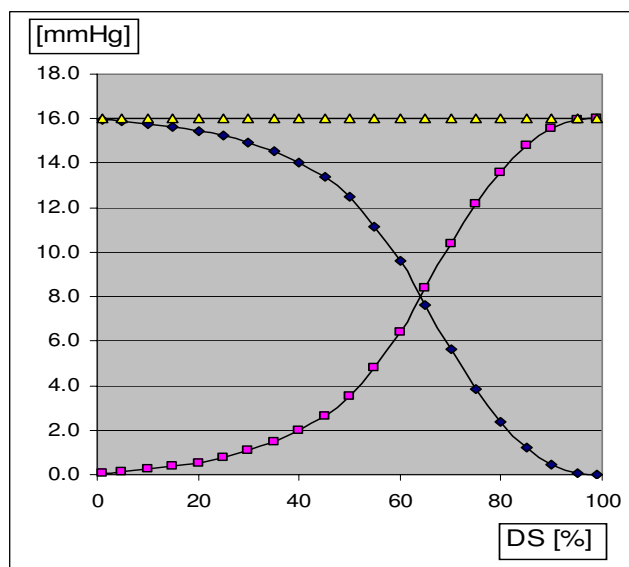
In order to calculate the increase in axial wall stress generated by the force  $F$ , we have to choose a value for the relative wall thickness  $\sigma$  of the vein at the stenosis entrance ( $\sigma = D_o/D_i$ , where  $D_o$  and  $D_i$  are the outer and inner diameters of the intact vein segment, see Fig. 2). Based on various publications, we choose an absolute wall thickness of 0.2 mm [26,33,34]. Together with  $D_i = 10$  mm, this yields then a relative wall thickness of 1.04. Division of the  $F$  val-

ues obtained for the particular DS values (1% to 99%) yields then the values of the supplementary axial wall stress in function of the actual DS.

To compare the increase in axial stress to the "normal" axial stress that was present in the vein wall before the apparition of the stenosis (and which is still the axial wall stress of the non stenotic vein segment during the zero flow phase), we need this "normal" stress value. Since values for PV are not available in the literature, we make the (reasonable) assumption that "normal" axial stress has the value one would obtain by inflating in vitro an excised, occluded segment of the vein with a pressure equal to the mean in vivo intravascular pressure. In the present example, this pressure is practically equal to the mean pressure of the left atrium ( $P_{LA, \text{mean}}$ ). With a value  $P_{LA, \text{mean}}$  of 8 mmHg [[32], p. 114], "normal" axial wall stress is then 13 kPa.

## Results

Fig. 3 shows the pressure falls in the considered lung lobe and across the stenosis as functions of the parameter DS. The sum of the two pressure drops is constant, as imposed by the model. At high DS values, the pressure in the proximal (= upstream) segment adjacent to the stenosis is much greater than at low DS values. With regard to circumferential stress, this is probably not dramatic since the pressure in this segment climbs anyway to about 13



**Figure 3**

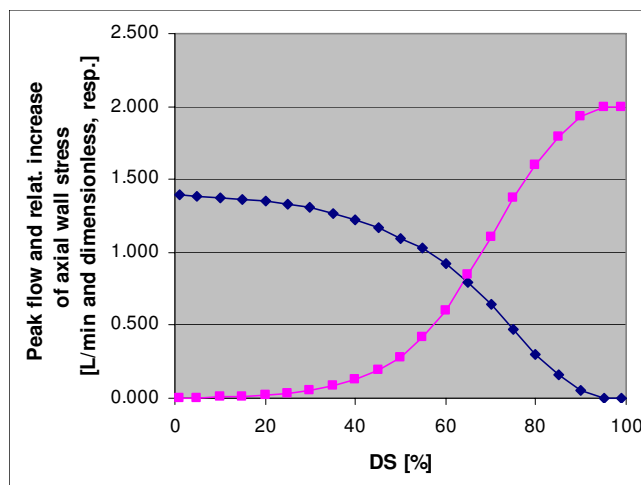
Pressure drops in the considered lung lobe (curve falling from the left to the right) and across the stenosis (curve rising from the left to the right) in function of increasing degree of diameter stenosis (DS). The sum of the two pressure drops (horizontal line) is constant, as imposed by the model.

mmHg during atrial systole after suppression of the atrial fibrillation (Systolic left atrial pressure ranges from 6 to 20 mmHg, see [[32], p. 114]).

Fig. 4 shows the value of peak flow Q (curve falling from the left to the right) and the ratio "axial stress at peak flow at  $x = 0$ " over "normal axial stress" (curve rising from the left to the right) for stenoses ranging from 1% to 99% diameter reduction. Flow Q decreases continuously from DS = 0% to DS = 100%, where it reaches (of course) zero. This means that the mean pressure in the arterial and venous nets upstream of the stenosis increases with stenosis severity. Furthermore, due to the progressive blood congestion inside the affected lung lobe, the peak pressures in the arteriolar, alveolar, and venous nets increase abnormally, too, so that these vessels are likely to get more and more damaged.

The second curve shows that the stress increase begins at roughly 30% diameter reduction and reaches twice the value of "normal" stress at high DS values. At these DS values, peak axial wall stress is thus three times greater than normal axial stress. For a vessel that normally does not have to bear such loads, this is certainly enormous and must therefore have deleterious consequences.

The curves depicted in Fig. 3 and 4 depend, of course, somewhat on the chosen parameter values. Nevertheless, since the values used in this numerical example are repre-



**Figure 4**

Value of peak flow Q in l/min (curve falling from the left to the right) and ratio "axial stress at peak flow at the stenosis entrance" over "normal axial stress" (curve rising from the left to the right) for diameter stenoses ranging from 1% to 99%. At DS = 50%, the flow reduction is already 25%. At DS = 100%, flow Q is, of course, zero. The stress increase begins at roughly 30% diameter reduction and reaches, in this example, twice the value of "normal" stress at high DS values.

sentative for PVs, the results are also representative of the magnitude of axial stress increases that can be generated by a stenosis located on an extraparenchymal PV.

## Discussion

The concepts and examples presented in this article show that already a moderate stenosis (diameter reduction of roughly 40%) located on the extraparenchymal part of a PV can generate an appreciable increase in axial wall stress in the proximal adjacent segment during peak forward flow. It must be pointed out that this result has been obtained using quite realistic data found in several publications. Since extraparenchymal veins are not firmly connected to the surrounding tissues, the axial force  $F$  that generates the cyclic stress increase cannot be absorbed by these tissues and is therefore present not only at the stenosis entrance but also in the whole extraparenchymal vein segment upstream of the stenosis. This segment is thus submitted to the same cyclic tractions.

In the calculated example, the driving pressure ( $P_{PA} - P_{LA}$ ) was chosen equal to the value it would have in absence of a stenosis. Therefore, one can state that axial stress in the proximal segment begins to rise long before peak circumferential stress starts increasing. The fact that media and intima thickening is regularly found in intraparenchymal veins in case of severe PV stenosis [35] suggests that, ultimately, also mean circumferential stress becomes excessive in all veins of the considered lung lobe.

The supplementary axial wall stress generated by the stenosis appears to be comparable to, or even much greater than, "normal" axial stress. It is therefore quite likely to have deleterious effects on the vessel wall. Abnormal biological processes induced by excessive wall stresses are, indeed, increasingly reported in the literature [35-37], although mainly for arteries and the circumferential direction. With regard to increases in axial stress, one can imagine that these increases result for instance in circumferential endothelium tears, elastic membrane disruptions, smooth muscle cell hyperplasia, matrix changes, myofibroblast proliferation, etc.

The fact that venous pressures are lower than arterial pressures does not allow, of course, to conclude that increases in circumferential stress induced in extraparenchymal PV by pressure rises can never be excessive. But in patients treated by RF ablation, mean and peak pulmonary venous pressures are not abnormally high at the end of the procedure, and also not in the following days or weeks. Thus, circumferential stress should not be excessive during this period. One might, however, also argue that, before the intervention, the pressure in the proximal vein segment was very low over the whole cardiac cycle, due to the presence of the AF, and that the wall of the PV was, conse-

quently, abnormally thin. The strong increase of systolic pressure in the proximal segment after restoration of the normal atrial function might thus immediately damage the PV via excessive circumferential stress. But, even if circumferential stress would strongly increase, this would not explain why stenoses appear usually in the extraparenchymal segment of the PV and not in intraparenchymal veins. It is thus unlikely that the progression of stenoses observed in patients is due to excessive circumferential stress. In contrast thereto, the concept of excessive axial wall stress proposed in this contribution provides a potential explanation for these well established facts, and it explains moreover why "non significant" stenoses (e.g. < 50% diameter reduction) are less prone to grow than severe ones, as was observed by several authors [14,18].

If the proposed explanation of the evolution of stenoses created by RF ablation should prove to be correct, then the best way to avoid the potential consequences of stenoses would be, of course, to find a method which does not create stenoses, or only small ones. This may perhaps be the case to a certain extent if lower ablation temperature can be used, or for particular techniques like cryoablation and ultrasound ablation [7,15,22]. Whether these techniques produce PV stenoses or not is not yet clear [38,40].

If better methods cannot be found, angioplasty without or with stent implantation will probably be unavoidable. For instance, Saad et al. already recommend PV stenosis dilatation for patients with luminal narrowing of more than 70%, irrespective of the presence or absence of symptoms [13]. The rationale of this recommendation resides in the unknown likelihood of developing pulmonary hypertension, as well as in the risk of lesion progression to total occlusion that could preclude the intervention [8,11,12,14]. However, in the late 5 years many authors have reported more or less negative results for angioplasty with or without stenting after RF catheter ablation or surgical repair of a pulmonary anomaly [10,19,41,42]. As far as the successful cases are concerned, it was pointed out that care was taken in the surgical or stenting procedure to achieve a minimal residual stenosis [42,43]. This is in full agreement with our results, which predict essentially that small or moderate stenoses are less prone to worsen than more severe ones.

If conventional stenting should remain unsatisfactorily because of an elevated rate of in-stent restenosis [44,45], the next step will probably be to try drug-eluting stents. It is still unknown whether they can prevent in-stent restenosis as well as they do this in coronary arteries. But the recommendation of achieving the smallest possible residual stenosis holds, of course, also for these stents because any residual lumen obstruction acts as a stenosis with regard to axial wall stress in the upstream vein segment. This rec-

ommendation is straight forwardly supported by recent results of Berkowitsch et al. who found that the relative reduction in PV diameter one day after the RF ablation was the strongest predictor of development of a severe PV stenosis [46]. Noteworthy is, furthermore, that our model is also in agreement with the observation that in patients presenting a stenosis approaching 70% of the lumen (= 90% reduction of the diameter), the flow to the affected lung is severely decreased [13]. As can be seen in Fig. 4, flow appears to have decreased by roughly 50% at DS = 70%, and by more than 90% at DS = 90%.

In the purely surgical domain, it is now well acknowledged that the sutureless marsupialization technique for the treatment of stenosed PV yields better result than the conventional technique [47-49]. According to our concept, this is probably due to the fact that the sutureless technique produces no post-operative stenosis, or a smaller one than a conventional anastomosis.

With regard to the vein segment (if any) situated downstream of the stenosis, it seems conceivable that the same mechanical phenomenon occurs in inverted direction during the retrograde flow phase (which is restored by the suppression of the AF). In this case, an important stenosis would actually have a deleterious effect not only on the upstream wall tissues but also on the downstream ones.

A further step would be now to test in vivo (for instance in dogs) the "predictions" derived from the theoretical model about the temporal evolution of PV stenoses in function of the "initial" DS. This could be done for instance by creating stenoses with a cuff placed around the PV.

## Conclusion

The concept of excessive axial stress proposed in this paper as an explanation for the negative time evolution of PV stenosis appears to be consistent with many well known facts about PV stenoses. It predicts that the higher the degree of stenosis after ablation, the greater the risk of an unfavorable evolution will be. This is in full agreement with the fact that severe PV stenoses seldom regress and even tend to evolve toward complete occlusion. With regard to angioplasty with or without stenting, it means that achieving the smallest possible residual stenosis is probably very important. Ideal would be, of course, to have an ablation technique that does not create PV stenoses.

## Authors' contributions

PAD and PAD adapted the general mathematical/physical model to the particular case of pulmonray vein stenosis. DCS provided the medical context of the article. All authors read and approved the final manuscript.

## Appendix

### A) Calculation of the pressure drop across the stenosis

According to Back et al. [24] the pressure drop  $\Delta P$  across a stenosis can be expressed as

$$\Delta P = \Delta P_{ef} + \Delta P_{eM} + \Delta P_{mf}$$

where  $\Delta P_{ef}$  and  $\Delta P_{eM}$  are pressure losses due to viscous and inertial forces, respectively, in the constriction cone, and  $\Delta P_{mf}$  the pressure loss due to viscous forces in the throat (Poiseuille law).

The formula for  $\Delta P_{ef}$  is:

$$\Delta P_{ef} = \frac{128 \eta L_c I_s}{\pi D_i^4} Q \quad (1)$$

where:

$$I_s = \frac{(D_i/D_s)^3 - 1}{3(1 - D_s/D_i)} \quad (2)$$

The factor  $\eta$  is the viscosity of blood (3.5 mPa s),  $L_c$  the length of the constriction cone (see Fig. 2),  $D_i$  the inner diameter of the vein at the cross section  $x = 0$ ,  $D_s$  the inner diameter in the throat of the stenosis, and  $Q$  the flow.

The formula for  $\Delta P_{eM}$  is:

$$\Delta P_{eM} = 0.5 \beta \rho [(1/A_s)^2 - (1/A_i)^2] Q^2, \quad (3)$$

where  $\beta$  is a factor we set equal to 1 (as proposed by Back et al. [24]).  $\rho$  is the density of blood, and  $A_i$  and  $A_s$  are the luminal areas at the stenosis entrance and in the throat, respectively.

The formula for  $\Delta P_{mf}$  is:

$$\Delta P_{mf} = \frac{128 \eta L_m}{\pi D_s^4} Q, \quad (4)$$

where  $L_m$  is the length of the throat (see Fig. 2).

Writing the coefficients of  $Q$  and  $Q^2$  in  $\Delta P_{ef}$ ,  $\Delta P_{eM}$ , and  $\Delta P_{mf}$  in form of functions  $f_1$ ,  $f_2$ , and  $f_3$  yields:

$$\Delta P = f_1 Q + f_2 Q^2 + f_3 Q = (f_1 + f_3) Q + f_2 Q^2 \quad (5)$$

### B) Calculation of flow Q

We express the relationship between pressures and hemodynamical resistances in the considered lung lobe by:

$$P_{PA} - P_{LA} = R Q + \Delta P = R Q + \Delta P_{ef} + \Delta P_{eM} + \Delta P_{mf} \quad (6)$$



where  $P_{PA}$  is the pressure in the pulmonary artery at the time of peak pulmonary flow through the considered PV (not to confound with peak pulmonary artery pressure),  $P_{LA}$  the left atrial pressure at this same time,  $Q$  the peak venous flow through the lobe, and  $R$  the hemodynamical resistance opposed by the lobe to flow  $Q$  (without the contribution of the stenosis). The summand  $RQ$  is thus the pressure drop in the lobe without the contribution of the stenosis. We have thus:

$$P_{PA} - P_{LA} = (R + f_1 + f_3) Q + f_2 Q^2 \quad (7)$$

or, equivalently:

$$f_2 Q^2 + (R + f_1 + f_3) Q + (P_{LA} - P_{PA}) = 0 \quad (8)$$

This quadratic equation allows to determine the value of  $Q$  when the values of  $f_1$ ,  $f_2$ ,  $f_3$ ,  $R$ ,  $P_{LA}$ , and  $P_{PA}$  are known. One can thus calculate the value of  $Q$  for different degrees of diameter stenosis (for instance  $DS = 1, 5, 10, 15, \dots, 90, 95$ , and  $99\%$ ). The values of the coefficients  $f_1$ ,  $f_2$ , and  $f_3$  are obtained from equations 1 to 4. They depend on the blood density and viscosity, and on the morphology of the stenosis.

The value of  $R$  is determined as follows. We consider the situation preceding the creation of the stenosis ( $DS = 0\%$ ). Denoting the peak flow through the considered lobe by  $Q_o$ , and the corresponding resistance of the lobe by  $R_o$ , we have  $P_{PA} - P_{LA} = R_o Q_o$ , so that  $R_o = (P_{PA} - P_{LA})/Q_o$ . For  $Q_o$ , we can set for instance  $Q_o = 23.6 \text{ ml/s}$  ( $= 1.4 \text{ liter/min}$ ). The hemodynamical resistance  $R_o$  for  $DS = 0\%$  being thus determined, one can then assume for instance that it remains unchanged when a stenosis appears, or have it decrease in a freely choosable manner to simulate a lowering of the hemodynamical resistance by compensatory vasodilatation. Inversely, one can also have  $R_o$  increase to simulate a pathologic, progressive narrowing of the affected pulmonary vessels by increasing stenosis severity.

### C) Calculation of the increase in axial wall stress

To calculate the increase in axial stress generated by the stenosis in the wall cross section  $x = 0$  at peak flow, one has to calculate first the supplementary axial force  $F$  that is generated in this cross section. As shown in [27], this is done using equations 1 to 4. It leads to:

$$F = \frac{\pi(P_{LA} + \Delta P)(D_i^2 - D_s^2)}{4} - \frac{32 \eta L_c(2/D_s + D_s^2/D_i^3 - 3/D_i)}{3(D_i - D_s)} Q \\ - \frac{2 \beta \rho(1/D_s^2 + D_s^2/D_i^4 - 2/D_i^2)}{\pi} Q^2 + \frac{32 \eta L_m Q}{D_s^2}$$

Division of the force  $F$  by the cross sectional area of the wall at  $x = 0$  yields the supplementary axial stress that adds at peak flow to the "normal" axial stress of the wall.

### References

1. Purerfellner H: **Pulmonary vein stenosis: still the Achilles heel of ablation for atrial fibrillation?** *Eur Heart J* 2005, **26**(14):1355-7.
2. Robbins IM, Colvin EV, Doyle TP, Kemp WE, Loyd JE, McMahon WS, Kay GN: **Pulmonary vein stenosis after catheter ablation of atrial fibrillation.** *Circulation* 1998, **98**(17):1769-75.
3. Haissaguerre M, Jais P, Shah DC, Garrigue S, Takahashi A, Lavergne T, Hocini M, Peng JT, Roudaut R, Clementy J: **Electrophysiological end point for catheter ablation of atrial fibrillation initiated from multiple pulmonary venous foci.** *Circulation* 2000, **101**(12):1409-17.
4. Taylor GW, Kay GN, Zheng X, Bishop S, Ideker RE: **Pathological effects of extensive radiofrequency energy applications in the pulmonary veins in dogs.** *Circulation* 2000, **101**(14):1736-42.
5. Yu WC, Hsu TL, Tai CT, Tsai CF, Hsieh MH, Lin WS, Lin YK, Tsao HM, Ding YA, Chang MS, Chen SA: **Acquired pulmonary vein stenosis after radiofrequency catheter ablation of paroxysmal atrial fibrillation.** *J Cardiovasc Electrophysiol* 2001, **12**(8):887-92.
6. Tsao HM, Chen SA: **Evaluation of pulmonary vein stenosis after catheter ablation of atrial fibrillation.** *Card Electrophysiol Rev* 2002, **6**(4):397-400.
7. Arentz T, Jander N, von Rosenthal J, Blum T, Furmaier R, Gornandt L, Josef Neumann F, Kalusche D: **Incidence of pulmonary vein stenosis 2 years after radiofrequency catheter ablation of refractory atrial fibrillation.** *Eur Heart J* 2003, **24**(10):963-9.
8. Dill T, Neumann T, Ekin O, Breidenbach C, John A, Erdogan A, Bachmann G, Hamm CW, Pitschner HF: **Pulmonary vein diameter reduction after radiofrequency catheter ablation for paroxysmal atrial fibrillation evaluated by contrast-enhanced three-dimensional magnetic resonance imaging.** *Circulation* 2003, **107**(6):845-50.
9. Schneider C, Ernst S, Bahlmann E, Malisius R, Krumsdorf U, Boczor S, Lampe F, Hoffmann-Riem M, Kuck KH, Antz M: **Transesophageal echocardiography: A screening method for pulmonary vein stenosis after catheter ablation of atrial fibrillation.** *Eur J Echocardiogr* . 2006 May 9
10. Ernst S, Ouyang F, Goya M, Lober F, Schneider C, Hoffmann-Riem M, Schwarz S, Hornig K, Muller KM, Antz M, Kuck KH, Kugler C, Kuck KH: **Total pulmonary vein occlusion as a consequence of catheter ablation for atrial fibrillation mimicking primary lung disease.** *J Cardiovasc Electrophysiol* 2003, **14**(4):366-70.
11. Perez-Lugones A, Schwartzman PR, Schweikert R, Tchou PJ, Saliba W, Marrouche NF, Castle LW, White RD, Natale A: **Three-dimensional reconstruction of pulmonary veins in patients with atrial fibrillation and controls: morphological characteristics of different veins.** *Pacing Clin Electrophysiol* 2003, **26**(1 Pt 1):8-15.
12. Purerfellner H, Cihal R, Aichinger J, Martinek M, Nesser HJ: **Pulmonary vein stenosis by ostial irrigated-tip ablation: incidence, time course, and prediction.** *J Cardiovasc Electrophysiol* 2003, **14**(2):158-64.
13. Saad EB, Rossillo A, Saad CP, Martin DO, Bhargava M, Erciyes D, Bash D, Williams-Andrews M, Beheiry S, Marrouche NF, Adams J, Pisano E, Fanelli R, Potenza D, Raviele A, Bonso A, Themistoclakis S, Brachmann J, Saliba W, Schweikert RA, Natale A: **Pulmonary vein stenosis after radiofrequency ablation of atrial fibrillation: functional characterization, evolution, and influence of the ablation strategy.** *Circulation* 2003, **108**(25):3102-7.
14. Purerfellner H, Aichinger J, Martinek M, Nesser HJ, Cihal R, Gschwendtner M, Dierneder J: **Incidence, management, and outcome in significant pulmonary vein stenosis complicating ablation for atrial fibrillation.** *Am J Cardiol* 2004, **93**(11):1428-31.
15. Chen SA, Hsieh MH, Tai CT, Tsai CF, Prakash VS, Yu WC, Hsu TL, Ding YA, Chang MS: **Initiation of atrial fibrillation by ectopic beats originating from the pulmonary veins: electrophysiological characteristics, pharmacological responses, and effects of radiofrequency ablation.** *Circulation* 1999, **100**(18):1879-86.
16. Deisenhofer I, Schneider MA, Bohlen-Knauf M, Zrenner B, Ndrepepa G, Schmieder S, Weber S, Schreieck JJ, Weyerbrock S, Schmitt C:

- Circumferential mapping and electric isolation of pulmonary veins in patients with atrial fibrillation.** *Am J Cardiol* 2003, **91**(2):159-63.
17. Saad EB, Marrouche NF, Saad CP, Ha E, Bash D, White RD, Rhodes J, Prieto L, Martin DO, Saliba WJ, Schweikert RA, Natale A: **Pulmonary vein stenosis after catheter ablation of atrial fibrillation: emergence of a new clinical syndrome.** *Ann Intern Med* 2003, **138**(8):634-8.
  18. Ren JF, Marchlinski FE, Callans DJ: **Effect of heart rate and isoproterenol on pulmonary vein flow velocity following radiofrequency ablation: a Doppler color flow imaging study.** *J Interv Card Electrophysiol* 2004, **10**(3):265-9.
  19. Qureshi AM, Prieto LR, Latson LA, Lane GK, Mesia CI, Radvansky P, White RD, Marrouche NF, Saad EB, Bash DL, Natale A, Rhodes JF: **Transcatheter angioplasty for acquired pulmonary vein stenosis after radiofrequency ablation.** *Circulation* 2003, **108**(11):1336-42.
  20. Bini RM, Cleveland DC, Ceballos R, Barger LM Jr, Pacifico AD, Kirklin JW: **Congenital pulmonary vein stenosis.** *Am J Cardiol* 1984, **54**(3):369-75.
  21. van de Wal HJ, Hamilton DI, Godman MJ, Harinck E, Lacquet LK, van Oort A: **Pulmonary venous obstruction following correction for total anomalous pulmonary venous drainage: a challenge.** *Eur J Cardiothorac Surg* 1992, **6**(10):545-9.
  22. Kok LC, Everett TH 4th, Akar JG, Haines DE: **Effect of heating on pulmonary veins: how to avoid pulmonary vein stenosis.** *J Cardiovasc Electrophysiol* 2003, **14**(3):250-4.
  23. Rajagopalan B, Friend JA, Stallard T, Lee GD: **Blood flow in pulmonary veins: I. Studies in dog and man.** *Cardiovasc Res* 1979, **13**(12):667-76.
  24. Back MR, White RA, Kwack EY, Back LH: **Hemodynamic consequences of stenosis remodeling during coronary angioplasty.** *Angiology* 1997, **48**(2):99-109.
  25. Rajagopalan B, Friend JA, Stallard T, Lee GD: **Blood flow in pulmonary veins: II. The influence of events transmitted from the right and left sides of the heart.** *Cardiovasc Res* 1979, **13**(12):677-83.
  26. Rajagopalan B, Bertram CD, Stallard T, Lee GD: **Blood flow in pulmonary veins: III. Simultaneous measurements of their dimensions, intravascular pressure and flow.** *Cardiovasc Res* 1979, **13**(12):684-92.
  27. Banks J, Booth FV, MacKay EH, Rajagopalan B, Lee GD: **The physical properties of human pulmonary arteries and veins.** *Clin Sci Mol Med* 1978, **55**(5):477-84.
  28. Doriot PA: **Estimation of the supplementary axial wall stress generated at peak flow by an arterial stenosis.** *Phys Med Biol* 2003, **48**(1):127-38.
  29. Lin WS, Prakash VS, Tai CT, Hsieh MH, Tsai CF, Yu WC, Lin YK, Ding YA, Chang MS, Chen SA: **Pulmonary vein morphology in patients with paroxysmal atrial fibrillation initiated by ectopic beats originating from the pulmonary veins: implications for catheter ablation.** *Circulation* 2000, **101**(11):1274-81.
  30. Saad EB, Cole CR, Marrouche NF, Dresing TJ, Perez-Lugones A, Saliba WJ, Schweikert RA, Klein A, Rodriguez L, Grimm R, Tchou P, Natale A: **Use of intracardiac echocardiography for prediction of chronic pulmonary vein stenosis after ablation of atrial fibrillation.** *J Cardiovasc Electrophysiol* 2002, **13**(10):986-9.
  31. Schwartzman D, Kanzaki H, Bazaz R, Gorcsan J 3rd: **Impact of catheter ablation on pulmonary vein morphology and mechanical function.** *J Cardiovasc Electrophysiol* 2004, **15**(2):161-7.
  32. O'Rourke A, Alexander RW, Fuster V, Roberts R, King SB, Wellens HJ, eds: **Hurst's The Heart.** 9th edition. New-York: McGraw-Hill; 1998.
  33. Mackay EH, Banks J, Sykes B, Lee G: **Structural basis for the changing physical properties of human pulmonary vessels with age.** *Thorax* 1978, **33**(3):335-44.
  34. McDonald DA: *Blood Flow in Arteries*, revised 2nd edition. London: Edward Arnold (Publishers) Ltd; 1974.
  35. Sadr IM, Tan PE, Kieran MV, Jenkins KJ: **Mechanism of pulmonary vein stenosis in infants with normally connected veins.** *Am J Cardiol* 2000, **86**(5):577-9. A10
  36. Li L, Couse TL, DeLeon H, Xu CP, Wilcox JN, Chaikof EL: **Regulation of syndecan-4 expression with mechanical stress during the development of angioplasty-induced intimal thickening.** *J Vasc Surg* 2002, **36**(2):361-70.
  37. Albinsson S, Nordstrom I, Hellstrand P: **Stretch of the vascular wall induces smooth muscle differentiation by promoting actin polymerization.** *J Biol Chem* 2004, **279**(33):34849-55.
  38. Arentz T, von Rosenthal J, Blum T, Stockinger J, Burkle G, Weber R, Jander N, Neumann FJ, Kalusche D: **Feasibility and safety of pulmonary vein isolation using a new mapping and navigation system in patients with refractory atrial fibrillation.** *Circulation* 2003, **108**(20):2484-90.
  39. Oral H: **Pulmonary vein occlusion/stenosis after pulmonary vein ablation for atrial fibrillation.** *J Cardiovasc Electrophysiol* 2003, **14**(4):371-2.
  40. Tse HF, Reek S, Timmermans C, Lee KL, Geller JC, Rodriguez LM, Ghaye B, Ayers GM, Crijns HJ, Klein HU, Lau CP: **Pulmonary vein isolation using transvenous catheter cryoablation for treatment of atrial fibrillation without risk of pulmonary vein stenosis.** *J Am Coll Cardiol* 2003, **42**(4):752-8.
  41. Caldarone CA, Najm HK, Kadletz M, Smallhorn JF, Freedom RM, Williams WG, Coles JG: **Relentless pulmonary vein stenosis after repair of total anomalous pulmonary venous drainage.** *Ann Thorac Surg* 1998, **66**(5):1514-20.
  42. Tomita H, Watanabe K, Yazaki S, Kimura K, Ono Y, Yagihara T, Echigo S: **Stent implantation and subsequent dilatation for pulmonary vein stenosis in pediatric patients: maximizing effectiveness.** *Circ J* 2003, **67**(3):187-90.
  43. Hosking M, Redmond M, Allen L, Broecker L, Keaney M, Lebeau J, Walley V: **Responses of systemic and pulmonary veins to the presence of an intravascular stent in a swine model.** *Cathet Cardiovasc Diagn* 1995, **36**(1):90-6.
  44. Packer DL, Keelan P, Munger TM, Breen JF, Asirvatham S, Peterson LA, Monahan KH, Hauser MF, Chandrasekaran K, Sinak LJ, Holmes DR Jr: **Clinical presentation, investigation, and management of pulmonary vein stenosis complicating ablation for atrial fibrillation.** *Circulation* 2005, **111**(5):546-54.
  45. Purerfellner H, Martinek M: **Pulmonary vein stenosis following catheter ablation of atrial fibrillation.** *Curr Opin Cardiol* 2005, **20**(6):484-90.
  46. Berkowitsch A, Neumann T, Ekin O, Greiss H, Dill T, Kurzidim K, Kuniss M, Schneider HJ, Pitschner HF: **A decrease in pulmonary vein diameter after radiofrequency ablation predicts the development of severe stenosis.** *Pacing Clin Electrophysiol* 2005, **28**(Suppl 1):S83-5.
  47. Spray TL, Bridges ND: **Surgical management of congenital and acquired pulmonary vein stenosis.** *Semin Thorac Cardiovasc Surg Pediatr Card Surg Annu* 1999, **2**:177-88.
  48. Lacour-Gayet F: **Surgery for pulmonary venous obstruction after repair of total anomalous pulmonary venous return.** *Semin Thorac Cardiovasc Surg Pediatr Card Surg Annu* 2006:45-50.
  49. Devaney EJ, Chang AC, Ohye RG, Bove EL: **Management of congenital and acquired pulmonary vein stenosis.** *Ann Thorac Surg* 2006, **81**(3):992-5. discussion 995-6

Publish with **BioMed Central** and every scientist can read your work free of charge

"BioMed Central will be the most significant development for disseminating the results of biomedical research in our lifetime."

Sir Paul Nurse, Cancer Research UK

Your research papers will be:

- available free of charge to the entire biomedical community
- peer reviewed and published immediately upon acceptance
- cited in PubMed and archived on PubMed Central
- yours — you keep the copyright

Submit your manuscript here:  
http://www.biomedcentral.com/info/publishing\_adv.asp

