



Article scientifique

Article

2022

Supplemental data

Open Access

This file is a(n) Supplemental data of:

Persistent symptoms after SARS-CoV-2 infection in children: a cross-sectional population-based serological study

Dumont, Roxane Dina Caroline; Nehme, Mayssam; Lorthe, Elsa Louise Adèle; De Mestral, Carlos; Richard, Viviane Adissa; Baysson, Hélène; Pennacchio, Francesco; Lamour, Julien; Semaani, Claire; Zaballa, María-Eugenia; Pullen, Nick; Perrin, Anne; L'Huillier, Arnaud; Posfay Barbe, Klara [**and 2 more**]

Collaborators: Chappuis, François; Courvoisier, Delphine; Hurst, Samia; Eckerle, Isabella Anne; Flahaut, Antoine; Kaiser, Laurent; Kherad, Omar; Lescuyer, Pierre; Meyer, Benjamin; Pittet, Didier; Rinaldi, Frédéric; Rizzo, Jessica Vuilleumier, Nicolas [**and 2 more**]

This publication URL:

<https://archive-ouverte.unige.ch/unige:175421>

Publication DOI:

[10.1136/bmjopen-2022-063504](https://doi.org/10.1136/bmjopen-2022-063504)

Supplementary Material

Figure S1: Study flow diagram.

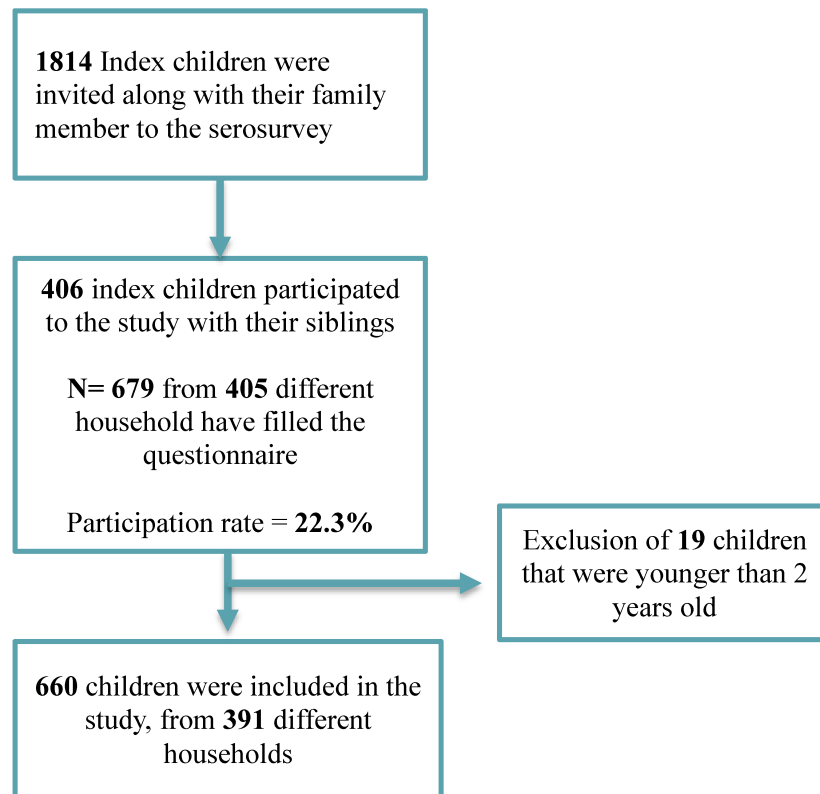


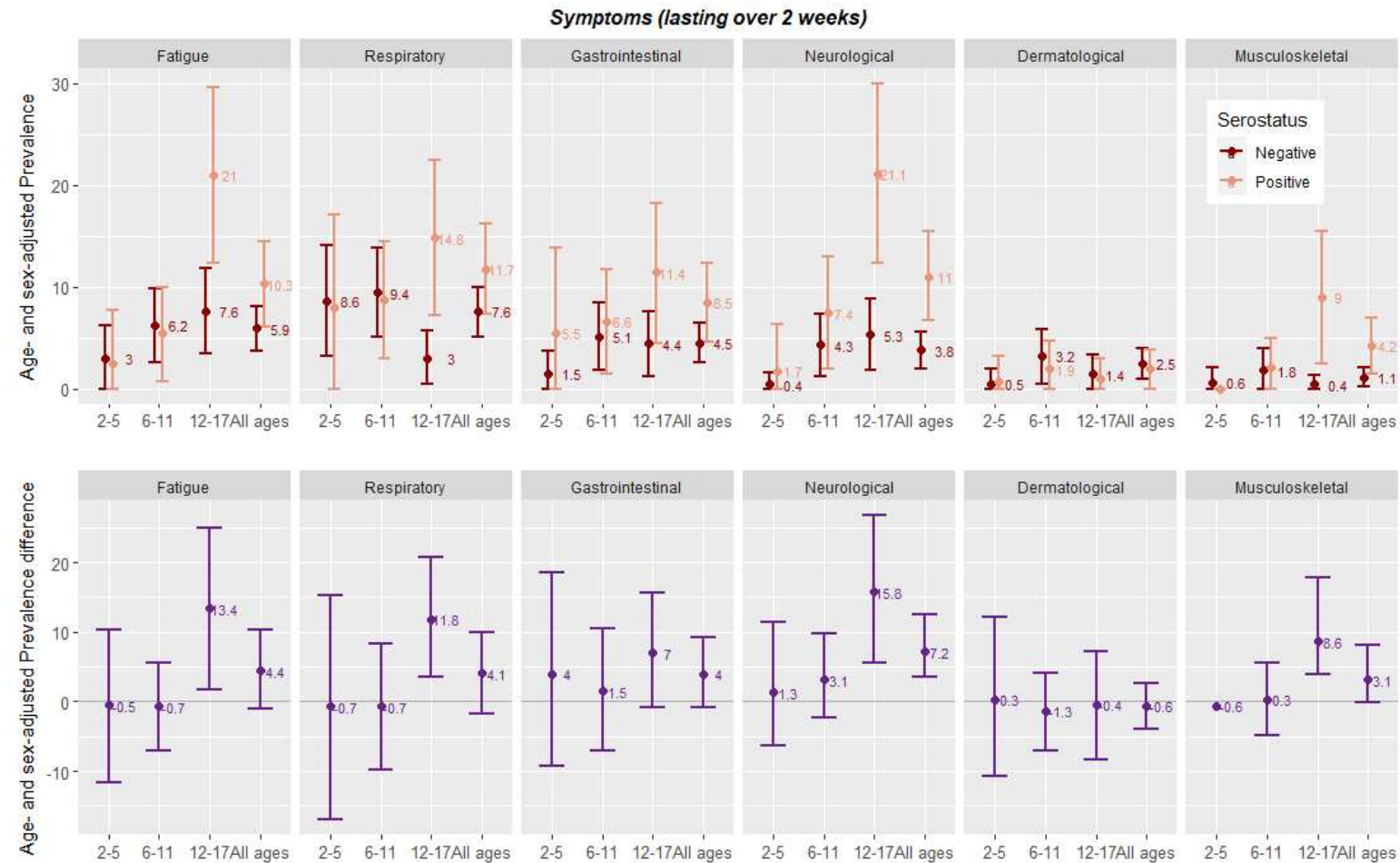
Figure S2: Age- and sex-adjusted prevalence of persistent symptoms lasting over 2 weeks, stratified by age group and serological status

Table S1. Description of symptoms

Symptoms ^a	Seronegative n (%)	Seropositive n (%)	p-value ^b
N	453	207	
Fatigue	28 (6.2)	24 (11.5)	0.026
Respiratory symptoms:			
Cough	19 (4.2)	11 (5.3)	0.665
Sore throat	14 (3.1)	11 (5.3)	0.245
Runny nose	27 (5.9)	13 (6.2)	1.000
Difficulty breathing	1 (0.2)	2 (1.0)	0.487
Fever	13 (2.9)	13 (6.2)	0.062
Gastrointestinal symptoms			
Loss of appetite	11 (2.4)	7 (3.4)	0.664
Nausea	5 (1.1)	5 (2.4)	0.351
Vomiting	2 (0.4)	1 (0.5)	1.000
Constipation	4 (0.9)	4 (1.9)	0.450
Diarrhea	5 (1.1)	6 (2.9)	0.181
Weight loss	1 (0.2)	1 (0.5)	1.000
Stomach pain	10 (2.2)	6 (2.9)	0.797
Musculoskeletal symptoms			
Muscle pain	7 (1.5)	10 (4.8)	0.028
Joint pain	2 (0.4)	3 (1.4)	0.369
Neurological Symptoms			
Headache	13 (2.9)	23 (11.1)	<0.001
Loss of smell	0 (0.0)	10 (4.8)	<0.001
Loss of taste	0 (0.0)	8 (3.8)	<0.001
Dizziness	0 (0.0)	1 (0.5)	0.689
Changes in vision	1 (0.2)	0 (0.0)	1.000
Shaking	1 (0.2)	1 (0.5)	1.000
Tingling	1 (0.2)	0 (0.0)	1.000
Confusion	4 (0.9)	4 (1.9)	0.450
Insomnia	6 (1.3)	2 (1.0)	0.992
Hypersomnia	0 (0.0)	2 (1.0)	0.184
Cardiovascular symptoms			
Palpitations	0 (0.0)	1 (0.5)	0.689
Dermatological symptoms			
Skin rashes	4 (0.9)	4 (1.9)	0.450
Itching skin	5 (1.1)	2 (1.0)	1.000
Redness skin	5 (1.1)	1 (0.5)	0.734

^aAnswers based on the question: "Since the start of the pandemic in Switzerland, has the child developed one or more symptoms (including fatigue) that have lasted at least two weeks?" If yes, which ones?

^b Fisher's exact and Pearson's Chi-squared test between seronegative and seropositive

Table S2. Age- and sex-adjusted prevalence of persistent symptoms, stratified by age group and serological status

	2-5 years old			6-11 years old			12-17 years old		
	Seronegative N=118	Seropositive N=29	Δ aPrev ^{a,b}	Seronegative N=180	Seropositive N=91	Δ aPrev	Seronegative N=155	Seropositive N=87	Δ aPrev
Symptoms > 2 weeks	aPrev ^{a,b} 8.6 (3.2,14.1)	aPrev ^{a,b} 7.9 (0.0,17.1)	Δ aPrev -0.7 (-13.4,11.6)	aPrev ^{a,b} 12.4 (7.5,17.3)	aPrev ^{a,b} 11.9 (5.2,18.6)	Δ aPrev -0.5 (-8.2,7.1)	aPrev ^{a,b} 8.9 (4.4,13.4)	aPrev ^{a,b} 29.0 (19.4,38.7)	Δ aPrev 20.1** (10.6,29.7)
Reported symptoms									
Fatigue	3.0 (0.0,6.2)	2.5 (0.0,7.7)	-0.5 (-11.6,10.4)	6.2 (2.6,9.8)	5.5 (0.7,10)	-0.7 (-8.7,7.1)	7.6 (3.4,11.8)	21.0 (12.3,29.6)	13.4** (4.7,22.1)
Respiratory	8.6 (3.2,14.1)	7.8 (0.0,17.1)	-0.7 (-16.2,14.5)	9.4 (5.1,13.8)	8.7 (2.9,14.5)	-0.7 (-8.3,6.8)	3 (0.4,5.7)	14.8 (7.2,22.5)	11.8* (2.7,21.6)
Gastrointestinal	1.5 (0.0,3.7)	5.5 (0.0,13.8)	4.0 (-8.3,17.5)	5.1 (1.8,8.5)	6.6 (1.4,11.7)	1.5 (-4.8,8.2)	4.4 (1.2,7.6)	11.4 (4.5,18.2)	7.0 (-0.8,15.7)
Neurological	0.4 (0.0,1.6)	1.7 (0.0,6.3)	1.3 (-9.3,14.5)	4.3 (1.2,7.3)	7.4 (1.9,12.9)	3.1 (-4.7,12.2)	5.3 (1.8,8.8)	21.1 (12.3,29.9)	15.8** (5.6,26.7)
Dermatological	0.5 (0.0,2.0)	0.8 (0.0,3.2)	0.3 (-8.0,9.5)	3.2 (0.5,5.8)	1.9 (0.0,4.7)	-1.3 (-6.8,3.9)	1.4 (0.0,3.3)	1.0 (0.0,3.0)	-0.4 (-5.6,4.5)
Musculoskeletal	0.6 (0.0,2.1)	0.0 (0.0)	-0.6 undefined	1.8 (0.0,4.0)	2.1 (0.0,4.9)	0.3 (-4.9,5.5)	0.4 (0.0,1.3)	9.0 (2.4,15.5)	8.6** (3.9,18)
Symptoms duration									
2 to 3 weeks	2.7 (0.0,5.7)	7.1 (0.0,16.4)	4.4 (-6.3,17.2)	8.2 (4.1,12.2)	17.7 (9.8,25.6)	9.5* (1.9,17.3)	3.0 (0.4,5.7)	24.4 (15.2,33.6)	21.4** (12.0,31.4)
3 to 4 weeks	0.5 (0.0,1.9)	0.0 (0.0,0.0)	-0.5 undefined	1.4 (0.0,3.2)	0.0 (0.0,0.0)	-1.4 undefined	0.1 (0.0,0.5)	0.4 (0.0,1.2)	0.3 (1.5,16.6)
More than 4 weeks	3.8 (0.2,7.5)	0.0 (0.0,0.0)	-3.8 undefined	4.4 (1.4,7.4)	0.0 (0.0,0.0)	-4.4 undefined	1.1 (0.0,2.6)	5.5 (0.5,10.3)	4.4 (-3.8,13.6)

^aPrevalence was computed using marginal prediction of logistic regression and 95% CI were computed using normal approximation and truncated to 0 for the aPRev.

^bPrevalence was adjusted for sex and age

* indicates p-value <0.05

**indicates p-value <0.01