



Article scientifique

Article

2019

Supplemental data

Open Access

This file is a(n) Supplemental data of:

Investigating the variability of cardiac pulse artifacts across heartbeats in
simultaneous EEG-fMRI recordings: A 7T study

Jorge, João; Bouloc, Charlotte; Brechet, Lucie; Michel, Christoph; Gruetter, Rolf

This publication URL:

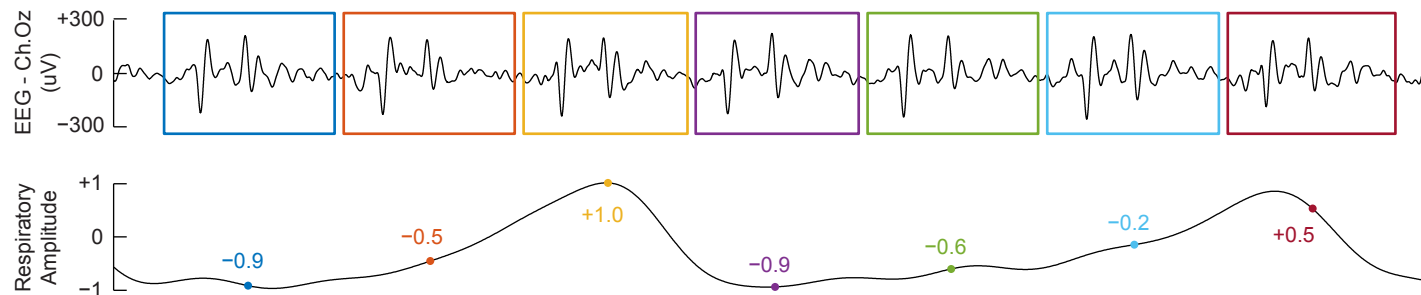
<https://archive-ouverte.unige.ch/unige:129926>

Publication DOI:

[10.1016/j.neuroimage.2019.02.021](https://doi.org/10.1016/j.neuroimage.2019.02.021)

Example subject Resting-state run

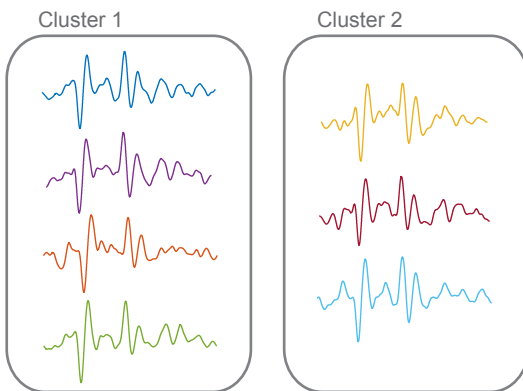
- ① PA epochs marked and segmented, variables attributed to each epoch (e.g. time of PA occurrence, respiratory amplitude, cardiac period, ...)



- ① Cluster the respiratory amplitude values with K-means, for a given K (e.g. $K=2$)



- ② Group the PA epochs of channel Oz according to the cluster solution from step ①



- ③ Estimate intra-cluster variability for the PA signal clusters
- ④ Repeat steps ② – ③ for every other EEG channel
- ⑤ Repeat steps ① – ④ with a different K (1–10), and/or different variable (i.e. time of PA occurrence, cardiac period, etc., or a random variable)