



Article  
scientifique

Revue de la  
littérature

2012

Published  
version

Open  
Access

This is the published version of the publication, made available in accordance with the publisher's policy.

---

## Osteoporosis in young adults: pathophysiology, diagnosis, and management

---

Ferrari, Serge Livio; Bianchi, M. L.; Eisman, J. A.; Foldes, A. J.; Adami, S.; Wahl, D. A.; Stepan, J. J.; Vernejoul, M.-C.; Kaufman, J.-M.

### How to cite

FERRARI, Serge Livio et al. Osteoporosis in young adults: pathophysiology, diagnosis, and management. In: Osteoporosis international, 2012, vol. 23, n° 12, p. 2735–2748. doi: 10.1007/s00198-012-2030-x

This publication URL: <https://archive-ouverte.unige.ch/unige:32657>

Publication DOI: [10.1007/s00198-012-2030-x](https://doi.org/10.1007/s00198-012-2030-x)

# Osteoporosis in young adults: pathophysiology, diagnosis, and management

S. Ferrari • M. L. Bianchi • J. A. Eisman • A. J. Foldes •  
 S. Adami • D. A. Wahl • J. J. Stepan •  
 M.-C. de Vernejoul • J.-M. Kaufman •  
 For the IOF Committee of Scientific Advisors Working  
 Group on Osteoporosis Pathophysiology

Received: 26 March 2012 / Accepted: 14 May 2012 / Published online: 9 June 2012  
 © International Osteoporosis Foundation and National Osteoporosis Foundation 2012

**Abstract** Postmenopausal osteoporosis is mainly caused by increased bone remodeling resulting from estrogen deficiency. Indications for treatment are based on low areal bone mineral density (aBMD, T-score  $\leq -2.5$ ), typical fragility fractures (spine or hip), and more recently, an elevated 10-year fracture probability (by FRAX®). In contrast, there is no clear definition of osteoporosis nor intervention thresholds in younger individuals. Low aBMD in a young adult may reflect a physiologically low peak bone mass, such as in lean but otherwise healthy persons, whereas fractures commonly occur with high-impact trauma, i.e., without bone fragility. Furthermore, low aBMD associated with vitamin D deficiency may be highly prevalent in some

regions of the world. Nevertheless, true osteoporosis in the young can occur, which we define as a T-score below  $-2.5$  at spine or hip in association with a chronic disease known to affect bone metabolism. In the absence of secondary causes, the presence of fragility fractures, such as in vertebrae, may point towards genetic or idiopathic osteoporosis. In turn, treatment of the underlying condition may improve bone mass as well. In rare cases, a bone-specific treatment may be indicated, although evidence is scarce for a true benefit on fracture risk. The International Osteoporosis Foundation (IOF) convened a working group to review pathophysiology, diagnosis, and management of osteoporosis in the young, excluding children and adolescents, and

This review paper has been endorsed by the Committee of Scientific Advisors of the IOF

S. Ferrari (✉)  
 Division of Bone Diseases, Faculty of Medicine,  
 Geneva University Hospital,  
 Geneva, Switzerland  
 e-mail: Serge.Ferrari@unige.ch

M. L. Bianchi  
 Bone Metabolism Unit, Istituto Auxologico Italiano IRCCS,  
 Milan, Italy

J. A. Eisman  
 Garvan Institute of Medical Research, St Vincent's Hospital,  
 University of New South Wales,  
 Sydney, NSW, Australia

A. J. Foldes  
 Osteoporosis Center, Hadassah University Hospital,  
 Mount Scopus,  
 Jerusalem, Israel

S. Adami  
 Rheumatology Unit, University of Verona,  
 Verona, Italy

D. A. Wahl  
 International Osteoporosis Foundation,  
 Nyon, Switzerland

J. J. Stepan  
 Institute of Rheumatology and Department of Rheumatology,  
 Faculty of Medicine, Charles University,  
 Prague, Czech Republic

M.-C. de Vernejoul  
 Federation of Rheumatology, Hospital Lariboisière,  
 University Paris 7,  
 Paris, France

J.-M. Kaufman  
 Department of Endocrinology and Unit for Osteoporosis  
 and Metabolic Bone Diseases, Ghent University Hospital,  
 Ghent, Belgium

provide a screening strategy including laboratory exams for a systematic approach of this condition.

**Keywords** Diagnosis · IOF · Low bone mass · Osteoporosis · Secondary osteoporosis · Young adults

## Introduction

Osteoporosis is a systemic skeletal disease characterized by low bone mass, microarchitectural deterioration of bone tissue leading to enhanced bone fragility, and a consequent increase in fracture risk [1]. In postmenopausal women, osteoporosis is usually the result of accelerated bone turnover due to estrogen deficiency, whereas in aging women and men, vitamin D insufficiency and secondary hyperparathyroidism may further contribute to bone loss. In these subjects, osteoporosis is diagnosed when their hip or spine bone mineral density (BMD) is two and a half standard deviations (SD) or more lower than the young adult mean ( $T\text{-score} \leq -2.5$ ) [2, 3]. Together with prevalent fragility fractures (typically spine or hip),  $T\text{-scores}$  equal to or below  $-2.5$  are considered as clear indications for osteoporosis therapy, although age and clinical risk factors that modulate fracture probability may also have to be taken into account [4]. Several national guidelines now recommend using FRAX® thresholds (10-year fracture probabilities) as indications for treatment decisions in women and men aged 50 and above [5–7]. On the other hand, low bone mass in children and adolescents has been defined as an areal bone mineral density (aBMD) more than 2 SD below the age-adjusted mean value ( $Z\text{-score} < -2$  SD) [8], and it has been recommended that bone fragility should not be diagnosed on the basis of low bone mass alone but requires the presence of fractures due to low trauma [9].

In contrast to childhood and postmenopausal/elderly subjects, diagnosis and treatment of osteoporosis in young adults, i.e., between 20 and 50 years of age, remain poorly defined. The true difficulty resides in differentiating between those young healthy individuals whose apparently low aBMD reflects low peak bone mass in relation to their body size, pubertal timing, genetic background, and environment during growth [10–12], which does not necessarily represent a pathological condition, and those who may truly have osteoporosis with bone fragility at a young age, resulting from altered bone modeling and/or remodeling during growth and/or thereafter. The latter situation is most commonly associated with a chronic disorder and may also occur as a genetic or idiopathic condition. Distinguishing between these two situations can be all the more difficult because up to 30 % of young women and 50 % of young men have had fractures during childhood and adolescence, usually traumatic but not uncommonly multiple [13–16]. These fractures are associated with decreased bone mass acquisition and lower peak bone mass in otherwise

healthy individuals [15], i.e., without an underlying pathophysiological mechanism. It would, therefore, be inappropriate to perform a DXA examination and to search for secondary causes of osteoporosis in most young people with prevalent fractures, unless the circumstances (low trauma), frequency (over two fractures), and/or site of fractures (e.g., vertebrae) appear unusual.

To help clinicians address this conundrum, the International Osteoporosis Foundation (IOF) convened a working group to review pathophysiology, diagnosis, and treatment of osteoporosis in the young and to outline a screening strategy including laboratory exams for a systematic approach to this condition. This approach requires, first, the exclusion of secondary causes [17] and, eventually, the assessment of whether any possible genetic disorders of bone fragility are involved [18].

## Peak bone mass and pathophysiology of osteoporosis in the young

Between 8 and 18 years of age, bone mineral content (BMC) more than doubles, whereas the true volumetric bone mineral density (vBMD) barely changes [19]. This bone mass accumulation pertains primarily to an increase in bone size (diameter) and cortical thickness by periosteal apposition (modeling) and, to a lesser extent, to trabecular bone formation and thickening [20]. Meanwhile, endosteal surfaces undergo both modeling and remodeling in order to achieve, approximately by the age of 20, bone mass, geometry, and microstructure of the adult skeleton [21]. In turn, peak bone mass is a major determinant of bone strength and fragility throughout life. Hence, the increase in bone diameter and mass in growing males, which occurs at approximately the same rate as in females but lasts longer, leading to a 10–15 % greater peak bone mass on average, plays an important role in explaining the lesser and later propensity to fractures in aging men compared to women. Nevertheless, as a result of continuous bone remodeling, loss of cortical and trabecular bone starts soon after peak bone mass is achieved in both genders, albeit in variable proportions in weight-bearing and nonweight-bearing bones [22–24], and accelerates in women after menopause and in aging men.

Heredity, that is, the additive effects of genes and their polymorphisms, accounts for 50 to 80 % of the variation in bone mass and structure among individuals [25] and likely contributes to some of the phenotypic differences between the male and female skeleton [26]. Yet gene expression depends on both the internal and external milieu, i.e., on hormone levels, particularly gonadal steroids (puberty) and the growth hormone (GH)–IGF-1 axis; nutrition, such as calcium and protein intake; physical activity, particularly load-bearing exercise; lifestyle; etc. [19]. So any disorder appearing during growth that alters one or more of these

parameters will exert a negative influence on bone modeling and remodeling, affecting bone mass acquisition and its distribution in the cortical and/or trabecular compartment, and could thereby cause bone fragility not only during growth but later on in young adults. Similarly, endocrine, nutritional, and other disturbances appearing during early adulthood will precipitate bone loss at a younger age. A typical example would be inflammatory bowel diseases (IBD), particularly Crohn's disease, which impair bone mass accrual and/or accelerate bone loss because of malabsorption and poor nutrient intake, low levels of physical activity, delayed puberty or secondary amenorrhea, in addition to systemic inflammation and, in many cases, effects of corticosteroid treatment [8, 27]. Another good example of the complex pathophysiology of osteoporosis in the young is illustrated by thalassemia major, which causes hormonal deficiencies (GH-IGF-1 and gonadal steroids), expands bone marrow at the expense of bone tissue, interferes with mineralization due to iron overload, and additionally, defers oxamine treatment that inhibits osteoblastic function [28]. Among numerous pharmacological agents implicated in bone loss (Table 1), depot progesterone acetate (Depo-Provera), used as a contraceptive agent, has recently raised huge concerns [29, 30].

### Definition and prevalence of osteoporosis in the young

As long as peak bone mass has not been achieved, the T-score definition of osteoporosis cannot be used. Hence, low bone mass in children and adolescents has been defined by a

Z-score below  $-2$ , and this definition could be extended beyond 20 years of age in those with delayed puberty, as is often the case with chronic diseases from childhood [8, 9]. By extension and considering that in young adults T- and Z-scores are virtually identical, the 2007 International Society for Clinical Densitometry Official Positions has suggested keeping the use of Z-scores to define “low bone mass” in young adult (premenopausal) women [31]. For the sake of coherence with the WHO operational definition of osteoporosis, however, we propose to keep the T-score-based definition of the disease for young adults, unless it appears that he/she is still growing. Hence, in young adults suffering from a chronic disorder known to affect bone metabolism (Table 1), a T-score below  $-2.5$  at spine or hip should be considered as diagnostic of osteoporosis. It is important to note, however, that the relationship between aBMD and fracture risk is not well established among young adults and that fracture prediction tools, such as FRAX<sup>®</sup>, are not valid for the young population. In the absence of secondary causes, occurrence of fragility fractures, in addition to the low T-score, may indicate genetic or idiopathic osteoporosis (see below). Hence, the detection of prevalent vertebral fractures, which in the absence of major back trauma most likely indicate bone fragility, plays an important role in the identification of young adults with osteoporosis. For this purpose, DXA-based vertebral fracture assessment (VFA) tools now appear as major add-ons to aBMD evaluation [32].

According to a  $T\text{-score} \leq -2.5$ , in theory, only 0.5 % of young women aged 30–40 years would fulfil the criteria of osteoporosis and another 15 % would be considered as

**Table 1** Major causes of secondary osteoporosis in the young

Chronic and inflammatory	Inflammatory bowel disease	Malabsorption
	Coeliac disease	HIV
	Nephropathies	Organ transplant
	Cystic fibrosis	Connective tissue diseases
	(Juvenile) rheumatoid arthritis	Thalassemia
	Systemic mastocytosis	Leukemia
	Diabetes type I	Cushing's syndrome
	Hypovitaminosis D	Hyperparathyroidism
	Hypogonadism (amenorrhea, Turner, anorexia nervosa)	
	Hyperthyroidism	Pregnancy
	Duchenne	Galactosemia
	Gaucher's disease	Glycogen storage disease
	Hemochromatosis	Marfan syndrome
	Glucocorticoids	Glitazones
	PPIs (chronic use)	
	Anticonvulsants	Cyclosporine (tacrolimus)
Endocrine	Aromatase inhibitors, depot MPA	GnRH inhibitors
	High-dose thyroxine	Heparin (long-term)
	Cytotoxic chemotherapy	HAART
Neuromuscular and metabolic		
Medications		

*HIV* human immunodeficiency virus, *MPA* medroxyprogesterone acetate (used as contraceptive), *HAART* highly active antiretroviral therapy, *PPIs* proton pump inhibitors

osteopenic (T-score between  $-2.5$  and  $-1$ ) in any population [33]. This is corroborated by several observations, including a study of 282 premenopausal healthy women (mean age 34.8 years) without family history or secondary causes of bone fragility, which reported osteopenia in 10.6 % of cases [34]. Similar prevalence of low bone mass in 579 Spanish premenopausal women (aged 20–44 years) was observed, with lumbar spine (LS) BMD characterized as osteoporosis and osteopenia in 0.3 % and 13.1 % of the cases, respectively, and in 0.2 % and 12.6 %, respectively, using femoral neck (FN) BMD [35].

Against this background of low prevalence of osteoporosis in healthy young individuals, the prevalence of osteoporosis and/or fragility (vertebral) fractures can reach 15 % to 50 % in young subjects with IBD [36–38], coeliac disease [39–41], cystic fibrosis [42–44], type 1 diabetes [45–47], rheumatoid arthritis [48], and anorexia nervosa [49–51], among other causes of secondary osteoporosis (Table 1).

### Clinical approach of osteoporosis in the young

As mentioned above, young individuals suffering from a chronic disease (Table 1) and/or presenting with a low trauma fracture, particularly in vertebrae, and/or multiple fractures (more than two) should have a DXA (ideally combined with VFA) evaluation. For those individuals with a T-score  $<-2.5$  and/or fragility fractures but no known secondary cause, a search for underlying disorders and/or medications potentially associated with osteoporosis should be initiated (Fig. 1). Low aBMD alone and/or together with bone and muscle pain (and weakness in the latter) can be due to vitamin D deficiency, eventually osteomalacia, i.e., not necessarily osteoporosis. Moreover, when vitamin D levels are adequate, low aBMD without fragility fractures, including the absence of vertebral crush fractures as evaluated by VFA (see above) and/or lateral X-rays, does not necessarily represent a pathological situation, particularly in subjects of small body size [8]. Investigations in this case should be limited in the absence of symptoms and/or signs of a chronic disorder. Interestingly, in one study of constitutionally lean<sup>1</sup> young women without menstrual alterations, aBMD as well as trabecular and cortical microstructure at distal radius was found to be as low as in women with anorexia nervosa, and the calculated bone breaking strength of

the constitutionally lean was lower than normal [54]. Although low aBMD in a particularly lean (BMI  $<18.5$  kg/cm<sup>2</sup>) but healthy individual could, therefore, represent an increased risk of fractures, there is no evidence, so far, for any therapeutic intervention in these cases. Similarly, late puberty has been associated with decreased peak bone mass, radius cortical vBMD, and thickness [55], but again, there is no evidence that this situation should prompt further investigations nor a therapeutic intervention in the absence of symptoms and/or signs for an underlying chronic disorder. In contrast, osteoporotic patients with low body mass index ( $<18.5$  kg/cm<sup>2</sup> as underweight defined by WHO) and menstrual (for women), eating, and/or behavioral disorders must be investigated for the possibility of secondary osteoporosis (more specifically anorexia nervosa).

Some series indicate that in 44–90 % of young men and women with osteoporosis or clinical fractures, an underlying secondary cause can be determined (see Table 1) [56–58], and the large percentage gap between studies probably reflects more or less intensive searches to determine the cause of osteoporosis and/or different referral patterns. In practice, this search should include a complete medical history, including personal and a thorough family history (see genetic causes below) of bone fragility and/or endocrine, metabolic and inflammatory disorders, past and present medications, age of menarche and/or history of amenorrhea, food intolerance, abdominal pain and bowel movements, urticaria, timing of recent pregnancies and lactation, and dietary and exercise patterns. Physical examination should particularly consider low height and/or BMI (see reasons above), abdominal tenderness, cutaneous signs of allergy (urticaria), hyperpigmentation or decreased pilosity (hypogonadism), as well as the presence of kyphosis, limb deformities, joint inflammation, hyperlaxity, blue sclerae, and/or poor dentition.

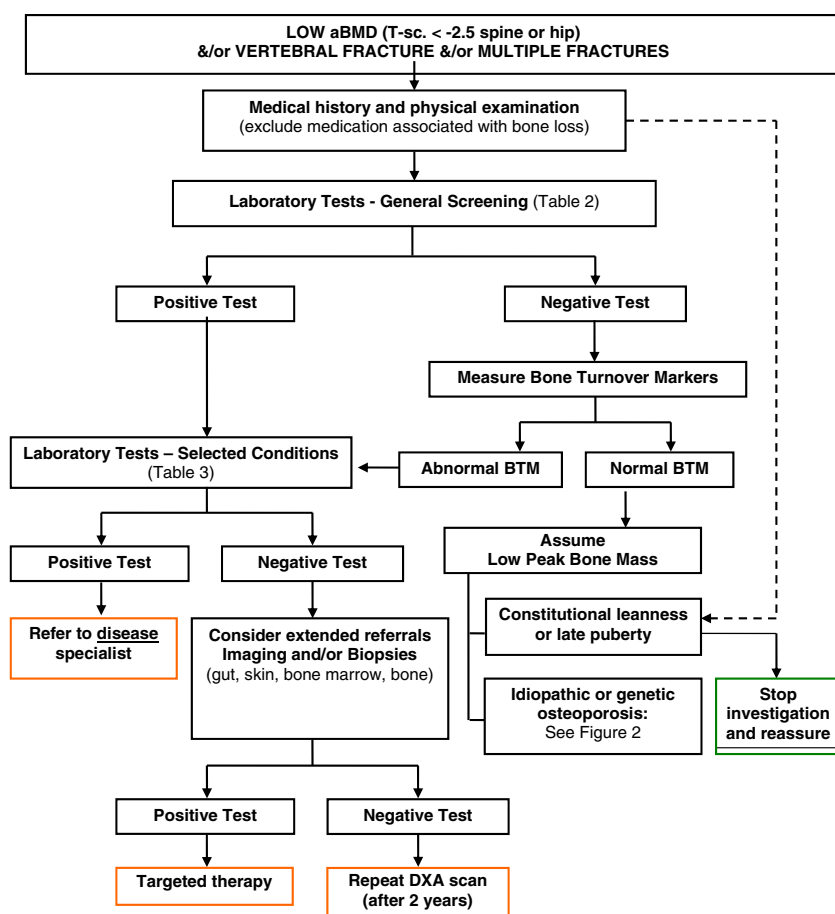
### Laboratory tests

A set of laboratory tests to screen for the most common bone and mineral disorders (including vitamin D deficiency and primary hyperparathyroidism), thyroid dysfunction, diabetes, renal failure and hepatic dysfunction, systemic inflammation, and in men, hypogonadism (particularly in the presence of other clinical signs) is presented in Table 2. It is particularly important to discard the possibility of vitamin D deficiency (25OHD  $<10$  ng/ml or 25 nmol/L), as this may affect bone mineralization and be translated into low aBMD, without being osteoporosis.

It is worth noting that coeliac disease (prevalence 1 %) may present in occult form, particularly since most adults will change their diet to avoid food intolerance/bowel symptoms, and should be suspected especially in the presence of low 25-hydroxyvitamin D. An elevated titer of antiendomysial or antitissue transglutaminase Ab has an excellent

<sup>1</sup> Constitutional thinness (CT), or Leanness, was identified over the last decades as a nonpathological state of underweight that does not meet the Diagnostic and Statistical Manual of Mental Disorders (DSM) IV criteria of anorexia nervosa. Contrary to the later pathology, the non-pathological state of CT in adult women is supported by the presence of menstruations, normal thyroid and cardiac functions, and normal insulin sensitivity. Moreover, CT individuals are characterized by a body weight that has always been in the lower percentiles for age, gender, and ethnicity. Familiality and heritability of thinness were also described or demonstrated. For further reading, see [52–54].

**Fig. 1** Clinical pathway for determining the cause of bone fragility in young adults with low BMD, vertebral fracture, and/or multiple fractures



positive predictive value for this disease [59]. Note that diagnosis of IBD (Crohn's disease and ulcerative colitis) is commonly delayed up to 2 years after the appearance of the first digestive symptoms. Hence, patients with low bone mass/bone fragility and abdominal symptoms/signs who test negative for antitissue transglutaminase Ab (and who may have inflammatory markers) should be referred to a specialist for further intestinal investigations.

An additional set of selected diagnostic tests to be applied when the clinical and/or first laboratory results orient towards a specific condition is shown in Table 3. Although systemic mastocytosis (SM) is a rare (0.3/10,000) condition, it is diagnosed in 0.4 to 1 % of bone biopsies referred for the investigation of osteoporosis [60], and an even higher prevalence has sometimes been reported. It becomes clinically manifest as urticaria pigmentosa in 60 % of the patients, gastrointestinal manifestations in 40 %, and idiopathic anaphylactoid reactions in 20 %. However all of these symptoms can be absent and the skeletal manifestation can be isolated, with osteoporosis in up to 30 % of patients with SM [61, 62]. An elevated serum tryptase (>20 ng/ml) has a positive predictive value of 98 % for SM [61].

Besides bone alkaline phosphatase (BALP) which levels, if high after growth is completed, can orient towards

osteomalacia (together with low 25OHD levels), Paget's disease, or bone neoplasia, and if low, towards hypophosphatasia (see below), the utility of bone turnover markers (BTMs)—that is, procollagen peptides (N and C terminals, PINP, and PICP, respectively) for bone formation and telopeptide cross-links of collagen type I (N and C terminals, NTX, and CTX, respectively), deoxypyridinoline/pyridinoline, and tartrate-resistant acid phosphatase for bone resorption—in the investigation of osteoporosis in the young remains controversial [63] (for reference range in young women, see [64]). First, data demonstrating a predictive role of BTMs for fracture risk in secondary osteoporosis are lacking, although they have been correlated with BMD changes in some diseases (i.e., IBD) [65]. Second, BTMs are correlated with the level of 25OHD, IGF-1, physical activity, etc. [66–69], and in the case of a chronic disorder, BTMs can be elevated, normal, or low depending on the nature of the underlying disease, its severity and relapses, past and current therapy, as well as the subject's mobility and nutrition. In premenopausal women with idiopathic osteoporosis, bone turnover may also be high, normal, or low [70]. BTMs have been negatively correlated with HbA1C in type 1 diabetes, i.e., were lower with poor glucose control [71]. In contrast, when the achievement of peak bone mass is delayed, as is



**Table 2** Laboratory tests—general screening

Mineral metabolism	Serum calcium (corrected for albumin)
	Serum phosphate
	Creatinine
	25(OH)D
	iPTH
	ALP (bone specific)
	BTMs (for instance, s-CTX and s-PINP) <sup>a</sup>
Inflammation, hematopoietic disorder	Blood cell count ESR or CRP
Hepatic disease	GOT, GPT, $\gamma$ -GT
Diabetes (primary or secondary)	Fasting glucose, HbA1C
Thyroid dysfunction	TSH
Hypogonadism (men)	Total testosterone
Malabsorption, Coeliac disease	24-h urinary calcium
	Anti-endomysial, anti-transglutaminase

25OHD 25-hydroxyvitamin D, iPTH intact parathyroid hormone, ALP alkaline phosphatase, BTM bone turnover markers, s-CTX serum carboxy-terminal cross-linking telopeptide of type I collagen, s-PINP serum procollagen type I N propeptide, ESR erythrocyte sedimentation rate, CRP C-reactive protein, GOT glutamic oxalacetic transaminase, GPT glutamic pyruvic transaminase,  $\gamma$ -GT  $\gamma$ -glutamyltransferase, TSH thyroid-stimulating hormone

<sup>a</sup> See text for details

often the case with chronic disorders starting during childhood or adolescence, BTMs may remain elevated into young adulthood (between 20 and 25 years of age) as a reflection of the ongoing physiological bone modeling/remodeling state rather than a catabolic state. A recent fracture may also cause an elevation of BTMs for several months. Note that in patients

**Table 3** Laboratory tests—selected conditions

Background	Test
TSH alterations	Free T4
Altered glucose, Cushing's syndrome	24-h free urinary cortisol
Altered testosterone (men)	LH/SHBG (free testosterone)
Amenorrhea, hypogonadism (women)	FSH/estradiol
Altered renal function (CRF)	1,25(OH) <sub>2</sub> D <sub>3</sub>
Hemochromatosis	Ferritin
Hypophosphatasia	ALP, BALP, urinary phosphoethanolamine
Mastocytosis	Tryptase, IgE
Gaucher's disease	Glucocerebrosidase

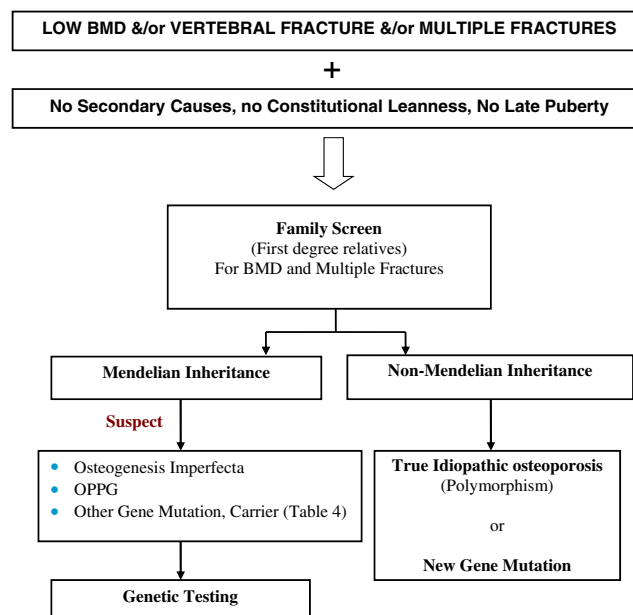
TSH thyroid-stimulating hormone, LH/SHBG luteinizing hormone/sex hormone-binding globulin, FSH follicle-stimulating hormone, CRF chronic renal failure, BALP bone-specific alkaline phosphatase, IgE immunoglobulin E

with osteogenesis imperfecta (OI), PINP, and  $\beta$ -CTX are normal or low, whereas osteocalcin is normal or high, reflecting the alterations in collagen metabolism on one side and bone turnover on the other side [72].

Despite these difficulties in interpreting BTMs, normal BTMs in a young adult with low aBMD would argue for an acquired low peak bone mass, whereas high BTMs would point towards an ongoing process of bone loss, as seen, for instance, in anorexia nervosa compared to constitutionally lean women [54]. Taken together with a low T-score and some evidence of bone fragility (see above), elevated BTMs could, therefore, prompt further investigations for an underlying cause (Fig. 1) and could be useful for therapeutic guidance [73]. On the other hand, low bone turnover has been observed in a subset of young women with idiopathic osteoporosis in association with a more pronounced deficit in bone microarchitecture and stiffness [70].

## Genetic osteoporosis

A thorough family history of bone fragility should always be considered when investigating osteoporosis in the young, in particular for those individuals with extremely low bone mass and/or multiple fractures. In the absence of secondary causes, an autosomal-dominant or autosomal-recessive mutation could indeed be responsible for bone fragility (Fig. 2). To date, there are more than 300 monogenic disorders with



**Fig. 2** Clinical pathway for young adults, with either low BMD and/or vertebral fracture, and/or multiple fractures, where no secondary causes of osteoporosis (including constitutional leanness and delayed puberty) were found

skeletal manifestations [74], including a number associated with bone fragility, such as connective tissue (OI and Marfan), lysosomal storage (Gaucher's and Pompe disease), and endocrine syndromes (including hypogonadotropic hypogonadism, estrogen receptor, and aromatase mutations in men) [75–77]. However, skeletal complications are usually neither the first nor the predominant manifestations in most of these diseases, with the exception of OI, hypophosphatasia [78], and osteoporosis-pseudoglioma (OPPG) (Table 4), the latter also characterized by presence of congenital or infancy-onset blindness [79]. In nonosteoporotic young adults with repeated low-trauma fractures (including vertebral fractures) and no secondary causes, mild forms of OI should be excluded (genetic screening of *Col1A1* and *Col1A2* mutations) [80].

### Idiopathic osteoporosis in the young

A particular situation occurs in young men with idiopathic osteoporosis, i.e., after secondary causes including hypogonadism, alcoholism, and medications have been excluded. These men are characterized by lower body weight and lower aBMD most prominent at the LS, reflecting low (trabecular and cortical) vBMD and smaller bone size. Long bone cortices are thinner due to larger endosteal cavities. Vertebral fractures, which are common in idiopathic male osteoporosis (IMO), have been associated with increased cortical porosity on iliac crest bone biopsies [81]. In these men, there is usually no evidence of either accelerated bone loss or increased bone turnover. Overall, the data points toward a defect in bone formation leading to decreased bone mass acquisition [82]. Lower circulating levels of IGF-1 and (free or bioavailable) estradiol, and higher SHBG could play a role in IMO. Moreover, there is a strong familial and genetic component involved, with a substantial proportion of sons being affected. Functional gene polymorphisms in the LDL-receptor-related protein 5 gene (*LRP5*) have been associated with this condition [83].

Idiopathic osteoporosis also exists in premenopausal women, but its pathophysiology is less well understood. A recent bone biopsy study in 45 premenopausal women with fragility fractures, 19 with low aBMD and 40 controls, indicates that the group with idiopathic osteoporosis has significantly thinner cortices and trabeculae, and a lower mean wall thickness, i.e., a bone formation deficit [70]. However, bone turnover and indices of bone remodeling are extremely heterogeneous in these women. Only in a subgroup with low bone formation rate and more severely disrupted microarchitecture were serum IGF-1 levels elevated, suggesting a resistance against this growth factor. In another study, young women with idiopathic osteoporosis were reported to have lower free estradiol levels and higher bone turnover than normal [84]. It should be noted that

hypercalciuria may be present not just in a subset of men, but also in premenopausal women with idiopathic osteoporosis [85].

### Osteoporosis in pregnancy and lactation

A moderate increase of bone turnover has been observed during pregnancy [86], although it is still uncertain whether significant changes of bone mass occur. A small decrease in aBMD has been observed at the LS, but in long bones, this might be compensated by endosteal and periosteal appositions [87]. While during pregnancy the mother's intestinal calcium absorption is increased, during lactation, it returns to normal values [88], putting further pressure on the skeleton to compensate for the need of calcium associated with breastfeeding. The body adapts by increasing bone resorption and reducing renal calcium excretion, influenced by increase in PTHrP production and hypoestrogenic state secondary to high prolactin levels [87, 89, 90]. The decrease in bone mass, observed mainly in the trabecular compartments of bones, is generally restored 6 to 12 months after weaning [91].

Pregnancy-associated osteoporosis is a rare condition, which can present in the form of spinal osteoporosis or transient osteoporosis of the hip (TOH), as well as associated with prolonged heparin use [92]. TOH is associated with uni- or bilateral hip pain and may be complicated with a fracture, sometimes spontaneous [93]. Postpregnancy osteoporosis can lead to vertebral fractures, height loss, and severe back pain [94], as well as clinical fractures at other sites. Preexisting low BMD and high bone turnover during pregnancy and lactation may both play a role [89]. In women of reproductive age with established osteoporosis, it could, therefore, be recommended to avoid breastfeeding. Note that in a randomized double-blind placebo-controlled study on postpartum healthy women, calcium supplementation did not prevent bone loss during lactation and only slightly enhanced gain in bone density after weaning [95].

### Treatment of osteoporosis in the young

Once vitamin D deficiency has been ruled out and/or corrected (i.e., 25OHD levels  $\geq 20$  ng/ml or 50 nmol/L), the approach to osteoporosis in the young should primarily target the underlying disorder. Since the mechanisms leading to secondary osteoporosis in the young are rarely unique (see IBD, for instance [27]), interventions should be multifactorial, i.e., target vitamin and nutritional deficiencies, particularly vitamin D, calcium and protein intake, physical activity, inflammation, corticosteroid treatment, and/or gonadal steroids. With vitamin D insufficiency being such a common finding in most subjects with secondary osteoporosis,



**Table 4** Main monogenic disorders primarily manifest as bone fragility

Monogenic disorders	Gene mutations	Familial pattern of inheritance	Description and main clinical outcome	Incidence
Osteogenesis imperfecta	Col I $\alpha 1$ and Col I $\alpha 2$	Autosomal dominant (types I–V)	Fragility fractures, bone deformity, and low BMD	Estimated at 6 to 7 per 100,000 people worldwide
	LEPRE1 and CRTAP (some OI types II, III, and VII) PPIB in type IX	Autosomal recessive (some types II, III, VII, and IX)	Dentinogenesis imperfecta  Mild forms may be manifest as low aBMD only	Types I and IV are the most common forms, affecting 4 to 5 per 100,000 people
Hypophosphatasia	ALPL	Autosomal dominant (adult form)	Defective mineralization, leading to softening of the bones (osteomalacia)	Severe forms affect an estimated 1 in 100,000 newborns. Milder cases, such as those that appear in adulthood, probably occur more frequently
		Autosomal recessive (perinatal)	Recurrent fractures in the foot and thigh bones inducing chronic pain  Loss of adult teeth prematurely Joint pain and inflammation	
Osteoporosis-pseudoglioma syndrome (OPPG)	LRP5 (11q13.4)	Recessive	Fragility fractures, bone deformity, low BMD and partial blindness Carrier state may be manifest as bone fragility only	Unknown

vitamin D supplementation (1,000–2,000 IU) should be given first, prior to eventually considering any bone-specific drug (see below), since it has the potential to improve aBMD by restoring proper bone matrix mineralization, preventing secondary hyperparathyroidism and moderate bone turnover. In contrast with their beneficial effects in secondary osteoporosis, there is little evidence that general measures such as physical exercise, calcium and vitamin D supplementation improve bone mass in young adults with idiopathic osteoporosis. Furthermore, there is no evidence for the use of bone-specific drugs in this context.

Small and often poorly controlled studies have shown that specific interventions to target the primary disease in turn have beneficial effects on aBMD, although data on fracture prevention are virtually nonexistent ([Appendix](#)). Among those targeted interventions are TNF inhibitors, such as infliximab in IBD [96, 97] and rheumatoid arthritis [98], and gluten-free diet in coeliac disease [99]. Adequate iron chelation with more recent iron chelator, i.e., not deferoxamine, and hormonal substitution of hypogonadism may have beneficial effects in thalassemia major [28]. Besides the favorable effects of weight recovery in anorexia nervosa, the role of hormone therapy (HT) $\pm$ IGF-1 remains controversial [100]. In a meta-analysis of prospective cohort studies and randomized clinical trials, HT in young women with anorexia nervosa significantly improved LS BMD, but to a lesser extent, FN BMD [101]. Contrasting with the improvement of bone mass

associated with the treatment of most secondary causes of osteoporosis, administration of antiretroviral therapy (ART) for HIV, particularly tenofovir, can further aggravate bone loss and fracture risk in these patients [102].

Evidence is limited to recommend bone-specific drugs, such as bisphosphonates (BPs) in young adults with secondary osteoporosis. Young women with anorexia nervosa and treated with daily risedronate had significant improvements of LS BMD after 6 and 9 months compared to a control group, although no changes occurred for total body and hip BMD [103]. Bone loss can also be reduced in premenopausal women who develop chemotherapy-induced amenorrhea using selective estrogen receptor modulators (SERMs) or BPs [104–107]. LS BMD was improved with risedronate and zoledronic acid in young women with ovarian failure after allogeneic stem cell transplant, which was not observed with HT alone [108]. Young endometriotic women treated with gonadotropin-releasing hormone (GnRH) agonists are also prone to bone loss due to severe estrogen deprivation. In these subjects, BMD levels can be stabilized and even increased at some skeletal sites by combining GnRH treatment with ‘add-backs’ such as human parathyroid hormone (hPTH-1-34), HT, or danazol [75, 109]. BPs given with infliximab have been shown to improve BMD in patients with Crohn's disease [97], and alendronate and zoledronate to increase aBMD in cystic fibrosis [110–112]. Calcitonin and most

BPs can decrease bone turnover and bone pain and improve aBMD in thalassemia major [28]. Two small randomized clinical trials of zoledronic acid (4 mg i.v. every 3 months) have shown increases of aBMD in this disease [113, 114], and a meta-analysis including five studies but only 100 patients also indicates beneficial effects of zoledronic acid on aBMD (LS > FN) in thalassemia major [115]. In ten patients with SM and osteoporotic fractures, the combined effects of interferon alpha and monthly pamidronate (1 mg/kg) increased LS BMD by 12.6 % and hip BMD by 1.9 % per year and no fractures developed under treatment [116]. Whether BPs dosing higher than usually prescribed in osteoporosis is actually required for patients with thalassemia major or SM, however, remains poorly substantiated, as the long-term effects of BP therapy in these young individuals have not been evaluated. In HIV-associated osteopenia and osteoporosis (mostly men), two small RCTs of, respectively, zoledronate once yearly and alendronate once weekly have shown significant improvements of aBMD [117–119]. It is, however, questionable if HIV-infected patients with osteopenia and without evidence of fragility fractures should receive an antiresorptive therapy. A discussion about the utility of BPs in OI is beyond the scope of this review (see reviews [120, 121]).

Certain BPs, as well as teriparatide, have been shown to reduce bone loss in glucocorticoid-induced osteoporosis, and several guidelines have been recently developed to address this topic [122–124]. The evidence of their effect on fracture risk reduction in premenopausal women and men is scarce. However, as reported by the IOF-ECTS recommendations, bone protective therapy may be appropriate in some premenopausal women and younger men, particularly in individuals with a previous history of fracture or those receiving high doses of glucocorticoids [124].

There is an important concern about the risk of congenital malformations with the administration of BPs in women of childbearing age [125] and teriparatide is contraindicated in pregnancy. On the other side, several case reports in mothers and their infants have demonstrated the safety of BPs during pregnancy and lactation [126–130]. Contrasting results exist on the improvement of LS BMD and reduction of future fracture risk in pregnancy-associated osteoporotic women [131]. This small retrospective study on pregnant and lactating women, where BMD levels at baseline were low (FN −2 SD and LS −2.8 SD on average), attempted to look at the effects of certain BPs on fracture rate and BMD, but the study was largely underpowered [131]. Generally, caution must be taken in prescribing BPs to reproductive women, since BPs are known to be stored and released from bones for long periods of time and have shown to affect fetal skeletal ossification in rat models [132, 133]. Their effect on bone growth in infants in the long-term is still unknown.

## Conclusions and perspectives

The diagnosis of osteoporosis in the young presents several challenges, since low bone mass and/or peripheral fractures with high-trauma are not necessarily associated with skeletal fragility. An apparently low aBMD (T-score < −2.5 at spine or hip by DXA) must be interpreted with caution in young individuals of small body size (constitutionally lean) and/or stunted growth. It should be emphasized that an inaccurate ‘diagnosis’ of osteoporosis in young subjects can lead to anxiety, unnecessary drug prescriptions, and in some countries, potential restrictions of insurance coverage. Thus, subjects with isolated low bone mass, although possibly deserving investigation depending on the context, for instance, to rule out vitamin D deficiency in regions of the world where this condition may be endemic, should not be classified as osteoporotic, and this diagnosis should be reserved for those subjects with evidence of skeletal fragility. Nevertheless, a truly low BMD and/or unusual fractures (such as low-trauma, multiple and vertebral) should prompt investigation for secondary causes of osteoporosis. Careful medical history, clinical, and laboratory investigations can reveal an underlying disease (mostly inflammatory, metabolic, and/or associated with gonadal insufficiency) that is amenable to specific medical interventions, which, in turn, will improve bone mass. BPs may improve BMD in young subjects with osteoporosis due to various disorders; however, the evidence is scarce so far, since the available studies were small, of limited duration, and there are no data on their antifracture efficacy. In any case, the indications and duration of antiresorptive treatment in the young should be as restrictive as possible, particularly in the absence of secondary causes (such as idiopathic osteoporosis, which may result from low peak bone mass rather than accelerated bone loss), multiple and/or fragility (vertebral) fractures, and high bone turnover accompanied by documented bone loss.

Ongoing developments of noninvasive technologies that can measure vBMD and bone microstructure in the cancellous and cortical bone compartments, such as high-resolution pQCT and derived estimates of bone strength (by finite element analysis), in the future could help the clinician to better evaluate the structural bases of bone fragility in the young [55, 134].

**Acknowledgments** We thank P. Devogelaer, C. Gluer, E. Orwoll, P. Miller, and other IOF CSA members for their valuable comments on the manuscript, as well as D. Pierroz for her editorial assistance.

**Conflicts of interest** None.

## Appendix A. Effects of treatments (specific and bone drugs) on the various diseases

Secondary disease	Treatment	Benefits on bone	Reference
Inflammatory bowel disease: Crohn's disease	Infliximab	Tibia trabecular BMD and endosteal circumference Z-scores improved significantly over 12 months in children with Crohn's disease	[135]
	Infliximab	LS BMD: +8.13 % after 1 year follow up compared to baseline, vs. only +1.55 % in the control group ( $p<0.01$ )	[96]
	Infliximab + bisphosphonates	LS BMD: +6.7 %/year in patients on concurrent treatment vs. +4.46 %/year in those on oral bisphosphonates alone ( $p=0.045$ ) over 2.2+0.99 years	[97]
Celiac disease	Gluten-free diet	4 % increase in LS and FN BMD after 1 year compared to baseline and up to 8 % for trochanter BMD. Lower values after 5-year follow-up	[99]
Cystic fibrosis	Alendronate	After 1 year of alendronate (70 mg once weekly for 1 year), BMD increased at the lumbar spine (5.2 % vs. -0.1 %) and at the hip (2.1 % vs. -1.3 %) compared with controls	[111, 112]
	Zoledronic acid	Compared with controls, LS BMD in zoledronic-treated group (2 mg i.v. every 3 months for 2 years) increased from baseline at 1 year (6.6 % vs. 0.35 %) and 2 years (6.14 % vs. 0.44 %), and femoral neck BMD increased at 1 year (4.12 % vs. -1.59 %) and 2 years (4.23 % vs. -2.5 %)	[110]
Adjuvant endocrine therapy for hormone-responsive breast cancer	Zoledronic acid	Zoledronic acid (4 mg intravenously every 6 months for 3 years) prevented bone loss at the spine and hip	[104, 136]
	Risedronate	In contrast to a significant decrease of BMD at the lumbar spine and hip in the placebo group, there was an increase in BMD in the risedronate group (30 mg/d, oral for 2 weeks, followed by 10 weeks without drug, repeated 8 times over 2 years). At 2 years, the mean difference ( $\pm$ SEM) between groups was 2.5 % $\pm$ 1.2 % at the lumbar spine ( $p=.041$ ) and 2.6 % $\pm$ 1.1 %, (95 % CI, 0.3 to 4.8) at the femoral neck ( $p=.029$ )	
Ovarian failure after allogeneic stem cell transplantation	Various (Ca + Vit. D; HRT, risedronate, zoledronic acid)	At 1 year, a significant decrease in LS and FN BMD was observed for the Ca + Vit. D group and a milder decrease in the HRT group. Risedronate treatment increased significantly LS BMD and prevented FN BMD loss. Zoledronic acid increased significantly both LS and FN BMD	[108]
Anorexia nervosa	Menstrual recovery	Stabilization of BMD with menstrual recovery	[137]
	Recombinant human IGF-I and HRT	BMD increased in women treated with rhIGF-I and HRT (1.8 %) vs. rhIGF-I alone (0.3 %)	[100]
	Risedronate	Increase of spine BMD of 4.9 $\pm$ 1.0 % at 9 months (5 mg daily), even without significant weight gain	[103]
	Alendronate	Body weight was the most important determinant of BMD after 1 year of alendronate (10 mg/d oral)	[138]
Chemo-induced amenorrhea	Tamoxifen	At 3 years of follow-up, in amenorrheic patients who developed chemotherapy-induced early menopause, the LS BMD decreased -6.8 % in tamoxifen users and -9.5 % in the controls	[107]
	Pamidronate	At 1 year of follow-up of pamidronate (60 mg i.v. every 3 months), in amenorrheic patients who developed chemotherapy-induced early menopause, the LS BMD increased 1 % in tamoxifen users and decreased -4 % in the controls	[105]
Rheumatoid arthritis	Infliximab	At 1 year of follow-up, BMD loss was significantly reduced in the infliximab group compared with the placebo group at the femoral neck (-0.35 % vs. -3.43 %) and total hip (-0.23 % vs. -2.62 %) but not at the hand and spine	[98]
HIV	Alendronate	Alendronate (70 mg weekly for 96 weeks) increased BMD at sites with a T-score $<-2.5$ by 7.1 % vs. 1.0 % in the placebo ( $p=0.0003$ )	[119]
	Zoledronic acid	Bone density improved in a 12-month trial of 5 mg intravenous zoledronate compared to placebo	[118]

	Zoledronic acid	Between 2 and 6 years, after the second dose of zoledronic acid (4 mg intravenously yearly), LS BMD was greater by 3.7 % compared to placebo ( $p=0.03$ ), as well as FN BMD and total body BMD	[117]
Thalassemia	Zoledronic acid	LS BMD was 8.9 % greater in patients treated for 2 years with 4 mg i.v. zoledronic acid every 3 months compared to placebo	[113]
	Zoledronic acid	At 2 years of follow-up, after 4 mg i.v. zoledronic acid every 3 or 6 months for a year, BMD was significantly increased at all sites compared to baseline ( $p<0.01$ )	[114]
	Zoledronic acid	Zoledronic acid improved BMD by 0.69 SD (95 % confidence interval 0.47–0.90)	[115]

## References

- (1991) Diagnosis, prophylaxis and treatment of osteoporosis. In American Journal of Medicine. Consensus development conference, 90, pp 170–210
- (1994) World Health Organization. Assessment of fracture risk and its application to screening for postmenopausal osteoporosis. Technical report series. In. Geneva
- Seeman E, Bianchi G, Khosla S, Kanis JA, Orwoll E (2006) Bone fragility in men—where are we? *Osteoporos Int* 17:1577–1583
- Kanis JA, Oden A, Johnell O et al (2007) The use of clinical risk factors enhances the performance of BMD in the prediction of hip and osteoporotic fractures in men and women. *Osteoporos Int* 18:1033–1046
- Compston J, Cooper A, Cooper C, Francis R, Kanis JA, Marsh D, McCloskey EV, Reid DM, Selby P, Wilkins M (2009) Guidelines for the diagnosis and management of osteoporosis in postmenopausal women and men from the age of 50 years in the UK. *Maturitas* 62:105–108
- Dawson-Hughes B, Tosteson AN, Melton LJ 3rd, Baim S, Favus MJ, Khosla S, Lindsay RL (2008) Implications of absolute fracture risk assessment for osteoporosis practice guidelines in the USA. *Osteoporos Int* 19:449–458
- Kanis JA, Burlet N, Cooper C, Delmas PD, Reginster JY, Borgstrom F, Rizzoli R (2008) European guidance for the diagnosis and management of osteoporosis in postmenopausal women. *Osteoporos Int* 19:399–428
- Bianchi ML (2007) Osteoporosis in children and adolescents. *Bone* 41:486–495
- Baim S, Binkley N, Bilezikian JP, Kendler DL, Hans DB, Lewiecki EM, Silverman S (2008) Official Positions of the International Society for Clinical Densitometry and executive summary of the 2007 ISCD Position Development Conference. *J Clin Densitom* 11:75–91
- Bonjour JP, Chevalley T, Rizzoli R, Ferrari S (2007) Gene–environment interactions in the skeletal response to nutrition and exercise during growth. *Med Sport Sci* 51:64–80
- Chevalley T, Rizzoli R, Hans D, Ferrari S, Bonjour JP (2005) Interaction between calcium intake and menarcheal age on bone mass gain: an eight-year follow-up study from prepuberty to postmenarche. *J Clin Endocrinol Metab* 90:44–51
- Ferrari S, Rizzoli R, Slosman D, Bonjour JP (1998) Familial resemblance for bone mineral mass is expressed before puberty. *J Clin Endocrinol Metab* 83:358–361
- Bailey DA, Wedge JH, McCulloch RG, Martin AD, Bernhardson SC (1989) Epidemiology of fractures of the distal end of the radius in children as associated with growth. *J Bone Joint Surg Am* 71:1225–1231
- Clark EM, Ness AR, Bishop NJ, Tobias JH (2006) Association between bone mass and fractures in children: a prospective cohort study. *J Bone Miner Res* 21:1489–1495
- Ferrari SL, Chevalley T, Bonjour JP, Rizzoli R (2006) Childhood fractures are associated with decreased bone mass gain during puberty: an early marker of persistent bone fragility? *J Bone Miner Res* 21:501–507
- Khosla S, Melton LJ 3rd, Dekutoski MB, Achenbach SJ, Oberg AL, Riggs BL (2003) Incidence of childhood distal forearm fractures over 30 years: a population-based study. *JAMA* 290:1479–1485
- Boyce AM, Gafni RI (2011) Approach to the child with fractures. *J Clin Endocrinol Metab* 96:1943–1952
- Ferrari S (2006) Single gene mutations and variations affecting bone turnover and strength. *BoneKey* 3:11–29
- Rizzoli R, Bianchi ML, Garabedian M, McKay HA, Moreno LA (2010) Maximizing bone mineral mass gain during growth for the prevention of fractures in the adolescents and the elderly. *Bone* 46:294–305
- Rauch F, Travers R, Glorieux FH (2006) Cellular activity on the seven surfaces of iliac bone: a histomorphometric study in children and adolescents. *J Bone Miner Res* 21:513–519
- Seeman E (2002) Pathogenesis of bone fragility in women and men. *Lancet* 359:1841–1850
- Nordstrom P, Neovius M, Nordstrom A (2007) Early and rapid bone mineral density loss of the proximal femur in men. *J Clin Endocrinol Metab* 92:1902–1908
- Riggs BL, Melton LJ, Robb RA, Camp JJ, Atkinson EJ, McDaniel L, Amin S, Rouleau PA, Khosla S (2008) A population-based assessment of rates of bone loss at multiple skeletal sites: evidence for substantial trabecular bone loss in young adult women and men. *J Bone Miner Res* 23:205–214
- Riggs BL, Wahner HW, Melton LJ 3rd, Richelson LS, Judd HL, Offord KP (1986) Rates of bone loss in the appendicular and axial skeletons of women. Evidence of substantial vertebral bone loss before menopause. *J Clin Invest* 77:1487–1491
- Ferrari S (2008) Human genetics of osteoporosis. *Best Pract Res Clin Endocrinol Metab* 22:723–735
- Karasik D, Ferrari SL (2008) Contribution of gender-specific genetic factors to osteoporosis risk. *Ann Hum Genet* 72:696–714
- Sylvester FA (2005) IBD and skeletal health: children are not small adults! *Inflamm Bowel Dis* 11:1020–1023
- Haidar R, Musallam KM, Taher AT (2011) Bone disease and skeletal complications in patients with beta thalassemia major. *Bone* 48:425–432
- Kaunitz AM, Shields WC (2005) Contraceptive equity and access in the United States: a 2005 update. *Contraception* 71:317–318



30. Lopez LM, Grimes DA, Schulz KF, Curtis KM (2011) Steroidal contraceptives: effect on bone fractures in women. *Cochrane Database Syst Rev* CD006033
31. Lewiecki EM, Gordon CM, Baim S et al (2008) Special report on the 2007 adult and pediatric Position Development Conferences of the International Society for Clinical Densitometry. *Osteoporos Int* 19:1369–1378
32. Jager PL, Jonkman S, Koolhaas W, Stiekema A, Wolffenbuttel BH, Slart RH (2011) Combined vertebral fracture assessment and bone mineral density measurement: a new standard in the diagnosis of osteoporosis in academic populations. *Osteoporos Int* 22:1059–1068
33. Kanis JA, Delmas P, Burckhardt P, Cooper C, Torgerson D (1997) Guidelines for diagnosis and management of osteoporosis. The European Foundation for Osteoporosis and Bone Disease. *Osteoporos Int* 7:390–406
34. Liu JM, Zhao HY, Ning G, Chen Y, Zhang LZ, Sun LH, Zhao YJ, Xu MY, Chen JL (2008) IGF-1 as an early marker for low bone mass or osteoporosis in premenopausal and postmenopausal women. *J Bone Miner Metab* 26:159–164
35. Diaz Curiel M, Garcia JJ, Carrasco JL, Honorato J, Perez Cano R, Rapado A, Alvarez Sanz C (2001) Prevalence of osteoporosis assessed by densitometry in the Spanish female population. *Med Clin (Barc)* 116:86–88
36. Bernstein CN, Blanchard JF, Leslie W, Wajda A, Yu BN (2000) The incidence of fracture among patients with inflammatory bowel disease. A population-based cohort study. *Ann Intern Med* 133:795–799
37. Heijckmann AC, Huijberts MS, Schoon EJ et al (2008) High prevalence of morphometric vertebral deformities in patients with inflammatory bowel disease. *Eur J Gastroenterol Hepatol* 20:740–747
38. Schulte CM (2004) Review article: bone disease in inflammatory bowel disease. *Aliment Pharmacol Ther* 20(Suppl 4):43–49
39. Thomason K, West J, Logan RF, Coupland C, Holmes GK (2003) Fracture experience of patients with coeliac disease: a population based survey. *Gut* 52:518–522
40. Ali T, Lam D, Bronze MS, Humphrey MB (2009) Osteoporosis in inflammatory bowel disease. *Am J Med* 122:599–604
41. Vestergaard P, Emborg C, Stoving RK, Hagen C, Mosekilde L, Brixen K (2002) Fractures in patients with anorexia nervosa, bulimia nervosa, and other eating disorders—a nationwide register study. *Int J Eat Disord* 32:301–308
42. Elkin SL, Fairney A, Burnett S, Kemp M, Kyd P, Burgess J, Compston JE, Hodson ME (2001) Vertebral deformities and low bone mineral density in adults with cystic fibrosis: a cross-sectional study. *Osteoporos Int* 12:366–372
43. Rossini M, Viapiana O, Del Marco A, de Terlizzi F, Gatti D, Adami S (2007) Quantitative ultrasound in adults with cystic fibrosis: correlation with bone mineral density and risk of vertebral fractures. *Calcif Tissue Int* 80:44–49
44. Sermet-Gaudelus I, Castanet M, Retsch-Bogart G, Aris RM (2009) Update on cystic fibrosis-related bone disease: a special focus on children. *Paediatr Respir Rev* 10:134–142
45. Ahmed LA, Joakimsen RM, Berntsen GK, Fonnebo V, Schirmer H (2006) Diabetes mellitus and the risk of non-vertebral fractures: the Tromsø study. *Osteoporos Int* 17:495–500
46. Miao J, Brismar K, Nyren O, Ugarph-Morawski A, Ye W (2005) Elevated hip fracture risk in type 1 diabetic patients: a population-based cohort study in Sweden. *Diabetes Care* 28:2850–2855
47. Vestergaard P, Rejnmark L, Mosekilde L (2005) Relative fracture risk in patients with diabetes mellitus, and the impact of insulin and oral antidiabetic medication on relative fracture risk. *Diabetologia* 48:1292–1299
48. Burnham JM, Shults J, Weinstein R, Lewis JD, Leonard MB (2006) Childhood onset arthritis is associated with an increased risk of fracture: a population based study using the General Practice Research Database. *Ann Rheum Dis* 65:1074–1079
49. Legroux-Gerot I, Vignau J, Collier F, Cortet B (2005) Bone loss associated with anorexia nervosa. *Joint Bone Spine* 72:489–495
50. Lucas AR, Melton LJ 3rd, Crowson CS, O'Fallon WM (1999) Long-term fracture risk among women with anorexia nervosa: a population-based cohort study. *Mayo Clin Proc* 74:972–977
51. Zipfel S, Herzog W, Beumont PJ, Russell J (2000) Osteoporosis. *Eur Eat Disord Rev* 8:108–116
52. Bossu C, Galusca B, Normand S, Germain N, Collet P, Frere D, Lang F, Laville M, Estour B (2007) Energy expenditure adjusted for body composition differentiates constitutional thinness from both normal subjects and anorexia nervosa. *Am J Physiol Endocrinol Metab* 292:E132–E137
53. Fernandez-Garcia D, Rodriguez M, Garcia Aleman J, Garcia-Almeida JM, Picon MJ, Fernandez-Aranda F, Tinahones FJ (2009) Thin healthy women have a similar low bone mass to women with anorexia nervosa. *Br J Nutr* 102:709–714
54. Galusca B, Zouch M, Germain N, Bossu C, Frere D, Lang F, Lafage-Proust MH, Thomas T, Vico L, Estour B (2008) Constitutional thinness: unusual human phenotype of low bone quality. *J Clin Endocrinol Metab* 93:110–117
55. Chevalley T, Bonjour JP, Ferrari S, Rizzoli R (2008) Influence of age at menarche on forearm bone microstructure in healthy young women. *J Clin Endocrinol Metab* 93:2594–2601
56. Khosla S, Lufkin EG, Hodgson SF, Fitzpatrick LA, Melton LJ 3rd (1994) Epidemiology and clinical features of osteoporosis in young individuals. *Bone* 15:551–555
57. Moreira Kulak CA, Schussheim DH, McMahon DJ, Kurland E, Silverberg SJ, Siris ES, Bilezikian JP, Shane E (2000) Osteoporosis and low bone mass in premenopausal and perimenopausal women. *Endocr Pract* 6:296–304
58. Peris P, Guanabens N, Martinez de Osaba MJ, Monegal A, Alvarez L, Pons F, Ros I, Cerda D, Munoz-Gomez J (2002) Clinical characteristics and etiologic factors of premenopausal osteoporosis in a group of Spanish women. *Semin Arthritis Rheum* 32:64–70
59. Leffler DA, Schuppan D (2010) Update on serologic testing in celiac disease. *Am J Gastroenterol* 105:2520–2524
60. Kann PH, Pfitzner A, Delling G, Schulz G, Meyer S (2006) Transiliac bone biopsy in osteoporosis: frequency, indications, consequences and complications. An evaluation of 99 consecutive cases over a period of 14 years. *Clin Rheumatol* 25: 30–34
61. Bains SN, Hsieh FH (2010) Current approaches to the diagnosis and treatment of systemic mastocytosis. *Ann Allergy Asthma Immunol* 104:1–10, quiz 10–12, 41
62. Barete S, Assous N, de Gennes C et al (2010) Systemic mastocytosis and bone involvement in a cohort of 75 patients. *Ann Rheum Dis* 69:1838–1841
63. Vasikaran S, Eastell R, Bruyere O et al (2011) Markers of bone turnover for the prediction of fracture risk and monitoring of osteoporosis treatment: a need for international reference standards. *Osteoporos Int* 22:391–420
64. Glover SJ, Gall M, Schoenborn-Kellenberger O, Wagener M, Garner P, Boonen S, Cauley JA, Black DM, Delmas PD, Eastell R (2009) Establishing a reference interval for bone turnover markers in 637 healthy, young, premenopausal women from the United Kingdom, France, Belgium, and the United States. *J Bone Miner Res* 24:389–397
65. Dresner-Pollak R, Karmeli F, Eliakim R, Ackerman Z, Rachmilewitz D (2000) Increased urinary N-telopeptide cross-linked type 1 collagen predicts bone loss in patients with inflammatory bowel disease. *Am J Gastroenterol* 95:699–704
66. Adami S, Bertoldo F, Braga V, Fracassi E, Gatti D, Gandolini G, Minisola S, Battista Rini G (2009) 25-Hydroxy vitamin D levels



- in healthy premenopausal women: association with bone turnover markers and bone mineral density. *Bone* 45:423–426
67. Adami S, Bianchi G, Brandi ML, Giannini S, Ortolani S, DiMunno O, Frediani B, Rossini M (2008) Determinants of bone turnover markers in healthy premenopausal women. *Calcif Tissue Int* 82:341–347
  68. Adami S, Gatti D, Viapiana O, Fiore CE, Nuti R, Luisetto G, Ponte M, Rossini M (2008) Physical activity and bone turnover markers: a cross-sectional and a longitudinal study. *Calcif Tissue Int* 83:388–392
  69. Adami S, Zivelonghi A, Braga V, Fracassi E, Gatti D, Rossini M, Olivieri FM, Viapiana O (2010) Insulin-like growth factor-1 is associated with bone formation markers, PTH and bone mineral density in healthy premenopausal women. *Bone* 46:244–247
  70. Cohen A, Dempster DW, Recker RR et al (2011) Abnormal bone microarchitecture and evidence of osteoblast dysfunction in premenopausal women with idiopathic osteoporosis. *J Clin Endocrinol Metab* 96:3095–3105
  71. Maggio AB, Ferrari S, Kraenzlin M, Marchand LM, Schwitzgebel V, Beghetti M, Rizzoli R, Farpour-Lambert NJ (2010) Decreased bone turnover in children and adolescents with well controlled type 1 diabetes. *J Pediatr Endocrinol Metab* 23:697–707
  72. Garnero P, Schott AM, Prockop D, Chevrel G (2009) Bone turnover and type I collagen C-telopeptide isomerization in adult osteogenesis imperfecta: associations with collagen gene mutations. *Bone* 44:461–466
  73. Cohen A, Shane E (2008) Treatment of premenopausal women with low bone mineral density. *Curr Osteoporos Rep* 6:39–46
  74. Superti-Furga A, Unger S (2007) Nosology and classification of genetic skeletal disorders: 2006 revision. *Am J Med Genet A* 143:1–18
  75. Finkelstein JS, Klibanski A, Arnold AL, Toth TL, Hornstein MD, Neer RM (1998) Prevention of estrogen deficiency-related bone loss with human parathyroid hormone-(1–34): a randomized controlled trial. *JAMA* 280:1067–1073
  76. Morishima A, Grumbach MM, Simpson ER, Fisher C, Qin K (1995) Aromatase deficiency in male and female siblings caused by a novel mutation and the physiological role of estrogens. *J Clin Endocrinol Metab* 80:3689–3698
  77. Smith EP, Boyd J, Frank GR, Takahashi H, Cohen RM, Specker B, Williams TC, Lubahn DB, Korach KS (1994) Estrogen resistance caused by a mutation in the estrogen-receptor gene in a man. *N Engl J Med* 331:1056–1061
  78. Mornet E (2007) Hypophosphatasia. *Orphanet J Rare Dis* 2:40
  79. Gong Y, Slee RB, Fukui N et al (2001) LDL receptor-related protein 5 (LRP5) affects bone accrual and eye development. *Cell* 107:513–523
  80. Bishop N (2009) Primary osteoporosis. *Endocr Dev* 16:157–169
  81. Ostertag A, Cohen-Solal M, Audran M, Legrand E, Marty C, Chappard D, de Vernejoul MC (2009) Vertebral fractures are associated with increased cortical porosity in iliac crest bone biopsy of men with idiopathic osteoporosis. *Bone* 44:413–417
  82. Van Pottelbergh I, Goemaere S, Zmierzczak H, De Bacquer D, Kaufman JM (2003) Deficient acquisition of bone during maturation underlies idiopathic osteoporosis in men: evidence from a three-generation family study. *J Bone Miner Res* 18:303–311
  83. Ferrari SL, Deutsch S, Baudoin C, Cohen-Solal M, Ostertag A, Antonarakis SE, Rizzoli R, de Vernejoul MC (2005) *LRP5* gene polymorphisms and idiopathic osteoporosis in men. *Bone* 37:770–775
  84. Rubin MR, Schussheim DH, Kulak CA, Kurland ES, Rosen CJ, Bilezikian JP, Shane E (2005) Idiopathic osteoporosis in premenopausal women. *Osteoporos Int* 16:526–533
  85. Peris P, Martinez-Ferrer A, Monegal A, Martinez de Osaba MJ, Alvarez L, Ros I, Muxi A, Reyes R, Guanabens N (2008) Aetiology and clinical characteristics of male osteoporosis. Have they changed in the last few years? *Clin Exp Rheumatol* 26:582–588
  86. Kovacs CS (2005) Calcium and bone metabolism during pregnancy and lactation. *J Mammary Gland Biol Neoplasia* 10:105–118
  87. Oliveri B, Parisi MS, Zeni S, Mautalen C (2004) Mineral and bone mass changes during pregnancy and lactation. *Nutrition* 20:235–240
  88. Kent GN, Price RI, Gutteridge DH, Rosman KJ, Smith M, Allen JR, Hickling CJ, Blakeman SL (1991) The efficiency of intestinal calcium absorption is increased in late pregnancy but not in established lactation. *Calcif Tissue Int* 48:293–295
  89. Kovacs CS (2001) Calcium and bone metabolism in pregnancy and lactation. *J Clin Endocrinol Metab* 86:2344–2348
  90. Kovacs CS, Fuleihan GH (2006) Calcium and bone disorders during pregnancy and lactation. *Endocrinol Metab Clin N Am* 35:21–51
  91. Sowers M, Corton G, Shapiro B, Jannausch ML, Crutchfield M, Smith ML, Randolph JF, Hollis B (1993) Changes in bone density with lactation. *JAMA* 269:3130–3135
  92. Bianchi ML (2009) Osteoporosis during pregnancy. *Eur Musculoskel Rev* 4:30–34
  93. Csoty J, Sisak K, Bardocz L, Toth K (2010) Bilateral spontaneous displaced femoral neck fractures during pregnancy. *J Trauma* 68:E115–E116
  94. Khovidhunkit W, Epstein S (1996) Osteoporosis in pregnancy. *Osteoporos Int* 6:345–354
  95. Kalkwarf HJ, Specker BL, Bianchi DC, Ranz J, Ho M (1997) The effect of calcium supplementation on bone density during lactation and after weaning. *N Engl J Med* 337:523–528
  96. Mauro M, Radovic V, Armstrong D (2007) Improvement of lumbar bone mass after infliximab therapy in Crohn's disease patients. *Can J Gastroenterol* 21:637–642
  97. Pazianas M, Rhim AD, Weinberg AM, Su C, Lichtenstein GR (2006) The effect of anti-TNF- $\alpha$  therapy on spinal bone mineral density in patients with Crohn's disease. *Ann N Y Acad Sci* 1068:543–556
  98. Haugeberg G, Conaghan PG, Quinn M, Emery P (2009) Bone loss in patients with active early rheumatoid arthritis: infliximab and methotrexate compared with methotrexate treatment alone. Explorative analysis from a 12-month randomised, double-blind, placebo-controlled study. *Ann Rheum Dis* 68:1898–1901
  99. Kempainen T, Kroger H, Janatuinen E et al (1999) Bone recovery after a gluten-free diet: a 5-year follow-up study. *Bone* 25:355–360
  100. Grinspoon S, Thomas L, Miller K, Herzog D, Klibanski A (2002) Effects of recombinant human IGF-I and oral contraceptive administration on bone density in anorexia nervosa. *J Clin Endocrinol Metab* 87:2883–2891
  101. Sim LA, McGovern L, Elamin MB, Swiglo BA, Erwin PJ, Montori VM (2010) Effect on bone health of estrogen preparations in premenopausal women with anorexia nervosa: a systematic review and meta-analyses. *Int J Eat Disord* 43:218–225
  102. Hoy J (2011) Bone, fracture and frailty. *Curr Opin HIV AIDS* 6:309–314
  103. Miller KK, Grieco KA, Mulder J, Grinspoon S, Mickley D, Yehezkel R, Herzog DB, Klibanski A (2004) Effects of risedronate on bone density in anorexia nervosa. *J Clin Endocrinol Metab* 89:3903–3906
  104. Delmas PD, Balena R, Confravreux E, Hardouin C, Hardy P, Bremond A (1997) Bisphosphonate risedronate prevents bone loss in women with artificial menopause due to chemotherapy of breast cancer: a double-blind, placebo-controlled study. *J Clin Oncol* 15:955–962

105. Fuleihan GH, Salamoun M, Mourad YA, Chehal A, Salem Z, Mahfoud Z, Shamseddine A (2005) Pamidronate in the prevention of chemotherapy-induced bone loss in premenopausal women with breast cancer: a randomized controlled trial. *J Clin Endocrinol Metab* 90:3209–3214
106. Saarto T, Blomqvist C, Valimaki M, Makela P, Sarna S, Elomaa I (1997) Chemical castration induced by adjuvant cyclophosphamide, methotrexate, and fluorouracil chemotherapy causes rapid bone loss that is reduced by clodronate: a randomized study in premenopausal breast cancer patients. *J Clin Oncol* 15:1341–1347
107. Vehmanen L, Elomaa I, Blomqvist C, Saarto T (2006) Tamoxifen treatment after adjuvant chemotherapy has opposite effects on bone mineral density in premenopausal patients depending on menstrual status. *J Clin Oncol* 24:675–680
108. Tauchmanova L, De Simone G, Musella T, Orio F, Ricci P, Nappi C, Lombardi G, Colao A, Rotoli B, Selleri C (2006) Effects of various antireabsorptive treatments on bone mineral density in hypogonadal young women after allogeneic stem cell transplantation. *Bone Marrow Transplant* 37:81–88
109. Sagsveen M, Farmer JE, Prentice A, Breeze A (2003) Gonadotrophin-releasing hormone analogues for endometriosis: bone mineral density. *Cochrane Database Syst Rev* CD001297
110. Chapman I, Greville H, Ebeling PR, King SJ, Kotsimbos T, Nugent P, Player R, Topliss DJ, Warner J, Wilson JW (2009) Intravenous zoledronate improves bone density in adults with cystic fibrosis (CF). *Clin Endocrinol (Oxf)* 70:838–846
111. Conwell LS, Chang AB (2009) Bisphosphonates for osteoporosis in people with cystic fibrosis. *Cochrane Database Syst Rev* CD002010
112. Papaioannou A, Kennedy CC, Freitag A et al (2008) Alendronate once weekly for the prevention and treatment of bone loss in Canadian adult cystic fibrosis patients (CFOS trial). *Chest* 134: 794–800
113. Gilfillan CP, Strauss BJ, Rodda CP, Bowden DK, Kean AM, Obaid M, Crawford BA (2006) A randomized, double-blind, placebo-controlled trial of intravenous zoledronic acid in the treatment of thalassemia-associated osteopenia. *Calcif Tissue Int* 79:138–144
114. Voskaridou E, Christoulas D, Konstantinidou M, Tsiftsakis E, Alexakos P, Terpos E (2008) Continuous improvement of bone mineral density two years post zoledronic acid discontinuation in patients with thalassemia-induced osteoporosis: long-term follow-up of a randomized, placebo-controlled trial. *Haematologica* 93:1588–1590
115. Mamtani M, Kulkarni H (2010) Bone recovery after zoledronate therapy in thalassemia-induced osteoporosis: a meta-analysis and systematic review. *Osteoporos Int* 21:183–187
116. Laroche M, Livideanu C, Paul C, Cantagrel A (2011) Interferon alpha and pamidronate in osteoporosis with fracture secondary to mastocytosis. *Am J Med* 124:776–778
117. Bolland MJ, Grey A, Horne AM, Briggs SE, Thomas MG, Ellis-Pegler RB, Gamble GD, Reid IR (2012) Effects of intravenous zoledronate on bone turnover and bone density persist for at least five years in HIV-infected men. *J Clin Endocrinol Metab*
118. Huang J, Meixner L, Fernandez S, McCutchan JA (2009) A double-blind, randomized controlled trial of zoledronate therapy for HIV-associated osteopenia and osteoporosis. *AIDS* 23:51–57
119. Rozenberg S, Lanoy E, Bentata M et al (2012) Effect of alendronate on HIV-associated osteoporosis: a randomized, double-blind, placebo-controlled, 96-week trial (ANRS 120). *AIDS Res Hum Retroviruses*
120. Rauch F, Glorieux FH (2006) Treatment of children with osteogenesis imperfecta. *Curr Osteoporos Rep* 4:159–164
121. Shapiro JR, Thompson CB, Wu Y, Nunes M, Gillen C (2010) Bone mineral density and fracture rate in response to intravenous and oral bisphosphonates in adult osteogenesis imperfecta. *Calcif Tissue Int* 87:120–129
122. Devogelaer JP, Goemaere S, Boonen S, Body JJ, Kaufman JM, Reginster JY, Rozenberg S, Boutsens Y (2006) Evidence-based guidelines for the prevention and treatment of glucocorticoid-induced osteoporosis: a consensus document of the Belgian Bone Club. *Osteoporos Int* 17:8–19
123. Grossman JM, Gordon R, Ranganath VK et al (2010) American College of Rheumatology 2010 recommendations for the prevention and treatment of glucocorticoid-induced osteoporosis. *Arthritis Care Res (Hoboken)* 62:1515–1526
124. Lekamwasam S, Adachi JD, Agnusdei D, et al. (2012) A framework for the development of guidelines for the management of glucocorticoid-induced osteoporosis. *Osteoporos Int*
125. Losada I, Sartori L, Di Gianantonio E, Zen M, Clementi M, Doria A (2010) Bisphosphonates in patients with autoimmune rheumatic diseases: can they be used in women of childbearing age? *Autoimmun Rev* 9:547–552
126. Biswas PN, Wilton LV, Shakir SA (2003) Pharmacovigilance study of alendronate in England. *Osteoporos Int* 14:507–514
127. Chan B, Zacharin M (2006) Maternal and infant outcome after pamidronate treatment of polyostotic fibrous dysplasia and osteogenesis imperfecta before conception: a report of four cases. *J Clin Endocrinol Metab* 91:2017–2020
128. Djokanovic N, Klieger-Grossmann C, Koren G (2008) Does treatment with bisphosphonates endanger the human pregnancy? *J Obstet Gynaecol Can* 30:1146–1148
129. Illidge TM, Hussey M, Godden CW (1996) Malignant hypercalcaemia in pregnancy and antenatal administration of intravenous pamidronate. *Clin Oncol (R Coll Radiol)* 8:257–258
130. Munns CF, Rauch F, Ward L, Glorieux FH (2004) Maternal and fetal outcome after long-term pamidronate treatment before conception: a report of two cases. *J Bone Miner Res* 19:1742–1745
131. O'Sullivan SM, Grey AB, Singh R, Reid IR (2006) Bisphosphonates in pregnancy and lactation-associated osteoporosis. *Osteoporos Int* 17:1008–1012
132. Patlas N, Golomb G, Yaffe P, Pinto T, Breuer E, Ornoy A (1999) Transplacental effects of bisphosphonates on fetal skeletal ossification and mineralization in rats. *Teratology* 60:68–73
133. McKenzie AF, Budd RS, Yang C, Shapiro B, Hicks RJ (1994) Technetium-99 m-methylene diphosphonate uptake in the fetal skeleton at 30 weeks gestation. *J Nucl Med* 35:1338–1341
134. Cohen A, Liu XS, Stein EM, McMahon DJ, Rogers HF, Lemaster J, Recker RR, Lappe JM, Guo XE, Shane E (2009) Bone microarchitecture and stiffness in premenopausal women with idiopathic osteoporosis. *J Clin Endocrinol Metab* 94:4351–4360
135. Thayu M, Shults J, Zemel B, Baldassano R, Lewis J, Leonard M (2009) Improvements in trabecular density, cortical dimensions, and a bone formation biomarker after initiation of infliximab therapy for childhood Crohn disease. *J Bone Miner Res* 24 (Suppl1):S1072
136. Gnant MF, Mlineritsch B, Luschin-Ebengreuth G et al (2007) Zoledronic acid prevents cancer treatment-induced bone loss in premenopausal women receiving adjuvant endocrine therapy for hormone-responsive breast cancer: a report from the Austrian Breast and Colorectal Cancer Study Group. *J Clin Oncol* 25:820–828
137. Misra M, Prabhakaran R, Miller KK et al (2008) Weight gain and restoration of menses as predictors of bone mineral density change in adolescent girls with anorexia nervosa-1. *J Clin Endocrinol Metab* 93:1231–1237
138. Golden NH, Iglesias EA, Jacobson MS, Carey D, Meyer W, Schebendach J, Hertz S, Shenker IR (2005) Alendronate for the treatment of osteopenia in anorexia nervosa: a randomized, double-blind, placebo-controlled trial. *J Clin Endocrinol Metab* 90:3179–3185