



Article scientifique

Article

2020

Published version

Open Access

This is the published version of the publication, made available in accordance with the publisher's policy.

Thromboembolism prophylaxis in adult patients with acute lymphoblastic leukemia treated in the GRAALL-2005 study

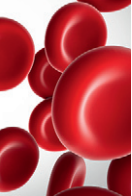
Orvain, Corentin; Balsat, Marie; Tavernier, Emmanuelle; Marolleau, Jean-Pierre; Pabst, Thomas; Chevallier, Patrice; de Gunzburg, Noémie; Cacheux, Victoria; Huguet, Françoise; Chantepie, Sylvain; Caillot, Denis; Chalandon, Yves; Frayfer, Jamilé; Bonmati, & Caroline [and 5 more]

How to cite

ORVAIN, Corentin et al. Thromboembolism prophylaxis in adult patients with acute lymphoblastic leukemia treated in the GRAALL-2005 study. In: Blood, 2020, vol. 136, n° 3, p. 328–338. doi: 10.1182/blood.2020004919

This publication URL: <https://archive-ouverte.unige.ch/unige:154831>

Publication DOI: [10.1182/blood.2020004919](https://doi.org/10.1182/blood.2020004919)



LYMPHOID NEOPLASIA

CME Article

Thromboembolism prophylaxis in adult patients with acute lymphoblastic leukemia treated in the GRAALL-2005 study

Corentin Orvain,¹⁻³ Marie Balsat,⁴ Emmanuelle Tavernier,⁵ Jean-Pierre Marolleau,⁶ Thomas Pabst,^{7,8} Patrice Chevallier,^{2,9} Noémie de Gunzburg,¹⁰ Victoria Cacheux,¹¹ Françoise Huguet,¹² Sylvain Chantepie,¹³ Denis Caillot,¹⁴ Yves Chalandon,^{8,15,16} Jamilé Frayfer,¹⁷ Caroline Bonmati,¹⁸ Véronique Lheritier,¹⁹ Norbert Ifrah,¹⁻³ Hervé Dombret,²⁰ Nicolas Boissel,^{20,*} and Mathilde Hunault-Berger,^{1-3,*} for the Group for Research on Adult Acute Lymphoblastic Leukemia (GRAALL)

¹Maladies du Sang, Centre Hospitalier Universitaire (CHU) d'Angers, Angers, France; ²Fédération Hospitalo-Universitaire Grand-Ouest Acute Leukemia (FHU-GOAL), Angers, France; ³Université d'Angers, INSERM, CRCINA, Angers, France; ⁴Hématologie Clinique, Centre Hospitalier Lyon (CHL) Sud, Pierre Bénite, France; ⁵Hématologie, Institut de Cancérologie Lucien Neuwirth, Saint-Priest-en-Jarez, France; ⁶Hématologie Clinique, CHU d'Amiens, Amiens, France; ⁷Department of Medical Oncology, University Hospital and Inselspital, Bern, Switzerland; ⁸Swiss Group for Clinical Cancer Research (SAKK), Bern, Switzerland; ⁹Hématologie, CHU de Nantes, Nantes, France; ¹⁰Hématologie Oncologie, Centre Hospitalier de Versailles, Versailles, France; ¹¹Hématologie Clinique, CHU de Clermont-Ferrand, Clermont-Ferrand, France; ¹²Hématologie, Institut Universitaire du Cancer de Toulouse, Toulouse, France; ¹³Institut d'Hématologie, CHU de Caen, Caen, France; ¹⁴Hématologie Clinique, CHU de Dijon, Dijon, France; ¹⁵Hématologie, Hôpitaux Universitaires de Genève, Genève, Switzerland; ¹⁶Faculté de Médecine, Université de Genève, Geneva, Switzerland; ¹⁷Hématologie, Centre Hospitalier de Meaux, Meaux, France; ¹⁸Hématologie, CHU de Nancy, Nancy, France; ¹⁹Coordination du Groupe GRAALL, CHL Sud, Pierre Bénite, France; and ²⁰Hématologie Adulte, Hôpital Saint-Louis, Assistance Publique-Hôpitaux de Paris, Paris, France

KEY POINTS

- Extensive antithrombin and heparin prophylaxis did not completely prevent the risk of VTE.
- Fibrinogen concentrates increase the risk of thrombosis and should be restricted to patients with hemorrhage.

Patients undergoing treatment of acute lymphoblastic leukemia (ALL) are at risk for thrombosis, caused in part by the use of L-asparaginase (L-ASP). Antithrombin (AT) replacement has been suggested to prevent venous thromboembolism (VTE) and thus may increase exposure to ASP. We report herein the results of the prophylactic replacement strategy in the pediatrics-inspired prospective GRAALL-2005 study. Between 2006 and 2014, 784 adult patients with newly diagnosed Philadelphia⁻ ALL were included. The incidence rate of VTE was 16%, with 69% of cases occurring during induction therapy. Most patients received AT supplementation (87%). After excluding patients who did not receive L-ASP or who developed thrombosis before L-ASP, AT supplementation did not have a significant impact on VTE. Administration of fibrinogen concentrates was associated with an increased risk of VTE, whereas transfusion of fresh frozen plasma had no effect. Heparin prophylaxis was associated with an increased risk of VTE. Prophylactic measures were not associated with an increased risk of grade 3 to 4 bleeding complications. The rate of VTE

recurrence after L-ASP reintroduction was 3% (1 of 34). In ALL patients receiving L-ASP therapy, the use of fibrinogen concentrates may increase the risk of thrombosis and should be restricted to rare patients with hypofibrinogenemia-induced hemorrhage. VTE developed despite extensive AT supplementation, which suggests the need for additional prophylactic measures. Although this large descriptive study was not powered to demonstrate the efficacy of these prophylactic measures, it provides important insight to guide future trial design. This trial was registered at www.clinicaltrials.gov as #NCT00327678. (*Blood*. 2020;136(3):328-338)



JOINTLY ACCREDITED PROVIDER™
INTERPROFESSIONAL CONTINUING EDUCATION

Medscape Continuing Medical Education online

In support of improving patient care, this activity has been planned and implemented by Medscape, LLC and the American Society of Hematology. Medscape, LLC is jointly accredited by the Accreditation Council for Continuing Medical Education (ACCME), the Accreditation Council for Pharmacy Education (ACPE), and the American Nurses Credentialing Center (ANCC), to provide continuing education for the healthcare team.

Medscape, LLC designates this Journal-based CME activity for a maximum of 1.00 AMA PRA Category 1 Credit(s)™. Physicians should claim only the credit commensurate with the extent of their participation in the activity.

Successful completion of this CME activity, which includes participation in the evaluation component, enables the participant to earn up to 1.0 MOC points in the American Board of Internal Medicine's (ABIM) Maintenance of Certification (MOC) program. Participants will earn MOC points equivalent to the amount of CME credits claimed for the activity. It is the CME activity provider's responsibility to submit participant completion information to ACCME for the purpose of granting ABIM MOC credit.

All other clinicians completing this activity will be issued a certificate of participation. To participate in this journal CME activity: (1) review the learning objectives and author disclosures; (2) study the education content; (3) take the post-test with a 75% minimum passing score and complete the evaluation at <http://www.medscape.org/journal/blood>; and (4) view/print certificate. For CME questions, see page 373.

Disclosures

Author Corentin Orvain received honoraria from Incyte and Novartis Pharmaceuticals and author Mathilde Hunault-Berger served as an advisor or consultant for Erytech and received honoraria from Jazz Pharmaceuticals, Inc. Editor Nancy Berliner, CME questions author Laurie Barclay, freelance writer and reviewer, Medscape, LLC, and the remaining authors declare no competing financial interests.

Learning objectives

Upon completion of this activity, participants will be able to:

1. Describe the incidence of venous thromboembolism (VTE) among adult patients with acute lymphoblastic leukemia (ALL) included in the pediatrics-inspired GRAALL-2005 protocol
2. Identify demographics- and disease-related factors associated with VTE among adult patients with ALL
3. Determine the efficacy and safety of the prophylactic strategy for VTE used in the pediatrics-inspired GRAALL-2005 protocol

Release date: July 16, 2020; Expiration date: July 16, 2021

Introduction

The prognosis of adult patients with acute lymphoblastic leukemia (ALL) has greatly improved since the introduction of pediatrics-inspired protocols such as those developed by the Group for Research on Adult Acute Lymphoblastic Leukemia (GRAALL).¹⁻⁴ L-Asparaginase (L-ASP) has a key role in these regimens.⁵ This enzyme catalyzes the hydrolysis of L-asparagine, resulting in its depletion. Because of the low levels of L-asparagine synthetase, lymphoblasts are particularly dependent on external sources of L-asparagine for protein synthesis and cell survival.^{6,7} Patients who undergo treatment of ALL are at risk of thrombosis caused by the disease itself, by the use of steroids, but also by the use of L-ASP.⁸⁻¹² Indeed, L-ASP inhibits the hepatic synthesis of L-asparagine-dependent hemostatic proteins, such as antithrombin (AT), and may induce endothelium activation.¹⁰⁻¹³ Thrombotic events were found to occur during induction therapy at a rate of 4.8% in 1280 children included in 17 prospective studies and of 5.9% in 323 adults included in 13 prospective studies.^{14,15} These events are responsible for thrombosis-related deaths or disabilities, delayed treatment, and bleeding complications from anticoagulation therapy, which requires more platelet transfusions to be safely administered.¹⁶

In addition, previous reports showed that patients with venous thromboembolism (VTE) have a lower event-free survival (EFS) that may be related to early discontinuation of L-ASP.¹⁶⁻¹⁸ The prophylactic infusion of fresh frozen plasma (FFP) has shown contradictory effects on the prevention of VTE.¹⁷⁻²⁰ The repletion of L-ASP with FFP may counteract the action of L-ASP,²¹ but it has been suggested that AT replacement could decrease the rate of thrombosis and thus prevent L-ASP discontinuation.^{18,22-25} The GRAALL group has introduced prophylactic measures for thromboembolic and bleeding complications, such as infusion of FFP or fibrinogen concentrates in cases of hypofibrinogenemia and AT concentrates in cases with low AT levels. Although the GRAALL-2005 study was not powered to demonstrate the efficacy of this prophylactic strategy, compliance with these

preventive measures was prospectively recorded to gain insight into thrombotic and bleeding complications.

The objectives of this study were (1) to evaluate the incidence of VTE among adult patients included in the pediatrics-inspired GRAALL-2005 protocol; (2) to identify demographic- and disease-related factors associated with VTE; and (3) to evaluate the impact of the prophylactic strategy used in our protocol.

Patients and methods

Patients and setting

The GRAALL-2005 trial was conducted from 2006 to 2014 at 57 French, 8 Belgian, and 8 Swiss centers. This randomized trial evaluated the impact of high-dose cyclophosphamide and rituximab during induction therapy in adult patients aged 18 to 65 years, with ALL without BCR-ABL.^{4,26} In brief, all patients received 5-drug induction therapy with 8 native *Escherichia coli* L-ASP (*E coli* L-ASP; Kidrolase) IV injections (6000 IU/m² per injection) on days 8, 10, 12, 20, 22, 24, 26, and 28. A single methotrexate intrathecal (IT) injection was administered during the steroid prephase followed by 2 additional triple IT injections on days 1 and 8. In cases with central nervous system (CNS) involvement, 2 triple IT injections per week were administered for a total of 8 injections, then 1 injection per week, for a total of 12 injections. Patients in complete remission (CR) received 2 consolidation courses of 3 alternating blocks with high-dose methotrexate, high-dose aracytine, and cyclophosphamide. Each consolidation course contained 2 *E coli* L-ASP IV injections (10 000 IU/m² per injection). High-risk patients were defined by ≥ 1 of the following criteria: CNS involvement; a white blood cell (WBC) count of $30 \times 10^9/L$ or higher; a CD10⁺ immature immunophenotype; poor cytogenetic abnormalities; poor early peripheral blood (PB) blast clearance, defined by a PB blast count $>1.0 \times 10^9/L$ at the end of the prephase; poor early bone marrow blast clearance, defined by $>5\%$ blasts in the bone marrow on day 8 of first induction; or late CR, defined by a need for salvage reinduction to achieve CR.²⁶ High-risk patients

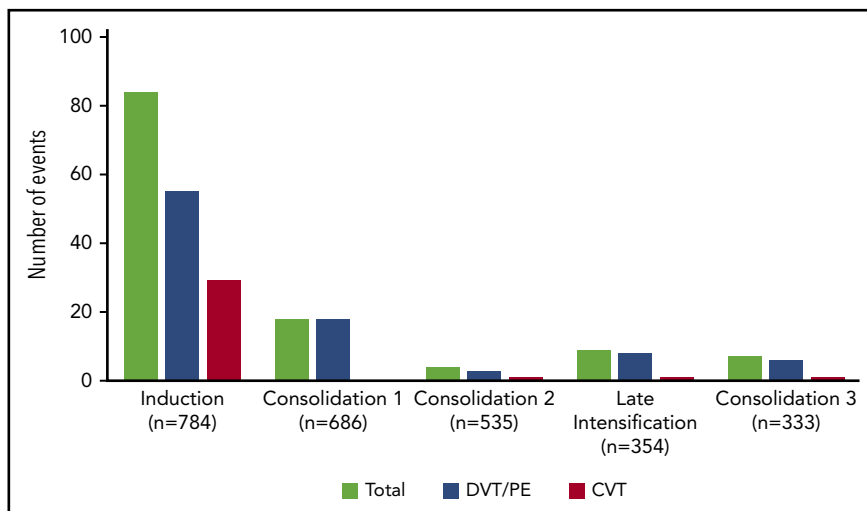


Figure 1. Number of thrombosis per treatment phase. Seven patients developed VTE at different sites (3 patients with DVT and CVT, 2 with PE and CVT, 1 with DVT and PE during induction therapy, and 1 with DVT and PE during consolidation), and 3 patients with DVT experienced relapse of DVT during a subsequent phase of treatment.

≤55 years were eligible for allogeneic stem cell transplantation in the first CR. Patients in persistent CR not eligible for allogeneic stem cell transplantation received a late intensification with the same drugs as in the induction course (with reduced anthracycline doses on days 15 and 16), followed by the repetition of 1 consolidation course. The full GRAALL 2005 protocol is shown in supplemental Figure 1, available on the *Blood* Web site. Informed consent was obtained from all patients at trial entry. The trial was conducted in accordance with the Declaration of Helsinki and approved by the Institutional Ethics Committee (Ile-de-France VI, France).

Recommendations for thrombosis and bleeding prophylaxis were based on the CAPELAL study results.¹⁸ AT and fibrinogen levels were evaluated prospectively every other day from days 8 to 16 and from days 20 to 28 when patients were receiving L-ASP during induction and late intensification. FFP or fibrinogen concentrates were recommended if fibrinogen levels were <0.5 g/L, platelet transfusion support was recommended for platelets <20 × 10⁹/L, and AT concentrate substitution therapy (Acclotone or Kyberlin, 25 IU/kg) was recommended to maintain AT levels >60%. Unfractionated heparin at 100 IU/kg per day via continuous infusion was recommended during induction; low molecular weight heparin (LMWH) at prophylactic doses in subcutaneous injection could be used as replacement at the physician's discretion. Heparin prophylaxis was recommended from day 1 of induction until the end of induction. When platelets were <20 × 10⁹/L, heparin prophylaxis was interrupted, and the patient received a platelet transfusion. Heparin prophylaxis was resumed after platelet transfusion. In accordance with standard recommendations at that time, *E coli* L-ASP was replaced with *Erwinia chrysanthemi* L-ASP (Erwinase) 12 000 IU/m² injections in cases of clinical hypersensitivity reactions.²⁷ Norgestrel was recommended for use as a contraceptive in women of childbearing age.

Data collection

The occurrence of any thrombosis in patients included in the GRAALL-2005 protocol was prospectively reported to the GRAALL data management center as serious adverse events. All cases of VTE were identified prospectively by clinical signs and confirmed by radiological imaging based on institutional

guidelines. Patients were not screened for asymptomatic TE and superficial thrombophlebitis was not registered as VTE. Diffuse intravascular coagulation (DIC) was evaluated according to international guidelines.²⁸

Statistical analysis

Categorical variables were presented as numbers with proportions and compared using the χ^2 test or Fisher's exact test, for small samples (expected values <5). Continuous variables were presented as medians with interquartile range (IQR) and compared using the nonparametric Mann-Whitney *U* test and Kruskal-Wallis test, as appropriate. Risk factors for VTE and the impact of prophylactic measures on VTE during induction and late intensification were analyzed by univariable logistic regression analysis. All factors with statistically significant associations ($P < .1$) were included in a multivariable logistic regression model. Results were all expressed as odds ratio (OR) with 95% confidence intervals (95% CI). The Kaplan-Meier method was used to estimate median EFS (failure to achieve CR, relapse, and death) and overall survival (OS, death) and survival curves were compared by using the log-rank test. All tests were 2-sided with a significance level of $P \leq .05$. Statistical analysis was performed with SPSS software version 20 (SPSS Inc, Chicago, IL).

Results

Incidence of thrombosis

From 2006 to 2014, 813 adult patients with newly diagnosed Philadelphia⁺ ALL were randomized. Twenty-nine patients were excluded by noneligibility criteria (11 patients), loss to follow-up (12 patients), lack of data regarding toxicity (3 patients), and withdrawal of consent (3 patients). Therefore, 784 patients were included in the study.

The incidence rate of VTE was 16% (122 VTEs in 112 patients) during the intensive part of chemotherapy (induction, consolidations, and late intensification). The 1-year cumulative incidence of first VTE was 17% (112 events in 658 patient-years; supplemental Figure 2). VTEs included 75 (62%) deep vein thromboses (DVTs), with 25 (33%) in the lower limb and 50 (67%) in the upper limb; 32 (26%) cerebral venous thromboses (CVTs);

Table 1. Characteristics of the whole cohort and of patients with DVT/PE and with CVT

	All (n = 784)	Any thrombosis (n = 112)	DVT/PE (n = 85)	CVT (n = 32)
Age, median (IQR), y	36 (25-48)	39 (28-51)	39 (28-51)	38 (23-43)
Female, n (%)	312 (40)	54 (48)	39 (46)	16 (50)
BMI, median (IQR), kg/m ²	24 (21-27)	25 (22-28)	25 (22-28)	23 (21-26)
Smoking, n (%)				
No	396 (50)	63 (56)	49 (58)	16 (50)
Yes	226 (29)	28 (25)	21 (25)	10 (31)
Missing data	162 (21)	21 (19)	15 (17)	6 (19)
Contraception, n (%)				
No	124 (16)	24 (21)	17 (20)	8 (25)
Yes	78 (10)	13 (12)	10 (12)	3 (9)
Missing data	110 (14)	17 (15)	12 (14)	5 (16)
Not applicable	472 (60)	58 (52)	46 (54)	16 (50)
Phenotype, n (%)				
B-cell	523 (67)	70 (63)	52 (61)	20 (63)
T-cell	261 (33)	42 (37)	33 (39)	12 (38)
CNS involvement, n (%)	55 (7)	5 (5)	3 (4)	2 (6)
WBC count at diagnosis, median (IQR), G/L	12 (4-42)	13 (4-47)	13 (4-49)	14 (3-51)
Hemoglobin level at diagnosis, median (IQR), g/dL	10 (8-12)	11 (9-13)	10 (8-12)	12 (10-14)
Platelet count at diagnosis, median (IQR), G/L	72 (32-154)	89 (40-196)	94 (32-207)	84 (56-167)
Prothrombin ratio at diagnosis, median (IQR)	82 (72-92)	85 (73-92)	85 (74-92)	85 (71-90)
Fibrinogen level at diagnosis, median (IQR), g/L	4 (3-5)	4 (3-5)	4 (3-6)	4 (2-6)
Poor early PB blast clearance, n (%)	184 (24)	19 (17)	15 (18)	4 (13)

and 15 (12%) pulmonary embolisms (PEs). All VTEs were symptomatic, including central line-related thrombosis. Eighty-four (69%) VTEs occurred during induction therapy, with 6 patients having more than 1 thrombosis. Other VTEs occurred as follows: 18 (15%) during consolidation phase 1, 4 (3%) during consolidation phase 2, 9 (7%) during late intensification, and 7 (6%) during consolidation phase 3 (Figure 1). The type of thrombosis was different per treatment phase, as most CVTs occurred during induction therapy (29 during induction vs 3 during subsequent phases of treatment; $P = .003$).

Risk factors for thrombosis

Patient characteristics are described in Table 1. In our cohort, risk factors at diagnosis for thrombosis included older age, female sex, high body mass index (BMI), and a high platelet count at diagnosis (Table 2). After multivariable analysis, only platelet count at diagnosis was associated with an increased global risk of thrombosis (OR, 1.02; 95% CI, 1.00-1.04; $P = .02$). Morbid obesity (BMI >40 kg/m²) was present in only 8 patients and not associated with an increased risk of thrombosis. Risk factors were different according to the type of VTE: DVT/PE or CVT. Age (OR, 1.23; 95% CI, 1.03-1.48; $P = .02$), a high BMI (OR, 1.05; 95% CI, 1.00-1.10; $P = .03$), and a high platelet count at diagnosis (OR, 1.03; 95% CI, 1.00-1.05; $P = .03$) were associated with an increased rate of DVT/PE after multivariable analysis. In detail, age

>25 years, a BMI >25 kg/m², and a platelet count >200 × 10⁹/L were associated with an increased risk of DVT/PE (supplemental Figure 3). In contrast, the only risk factor for CVT was a high hemoglobin level at diagnosis (OR, 1.17; 95% CI, 1.03-1.33; $P = .01$; Tables 1 and 2).

Poor prognostic factors, such as ALL phenotype, high WBC (>30 × 10⁹/L), CNS involvement, and poor prednisone response, were not associated with an increased risk of thrombosis. Hereditary risk factors for thrombosis (protein S deficiency, protein C deficiency, activated protein C, prothrombin G20210A, and factor V Leiden polymorphisms) and lupus anticoagulant were seldom evaluated (42 of 110 patients [38%] with thrombosis and 191 of 677 [28%] without thrombosis were tested), and their impact on thrombosis could not be evaluated. Prior VTE was not associated with an increased risk of thrombosis during treatment. Oral contraceptives before diagnosis and a history of smoking were not associated with thrombosis. There was no association between rituximab or cyclophosphamide randomization and thrombotic events ($P = .57$ and $P = .12$, respectively).

The impact of thrombosis prophylaxis during induction therapy

During induction, VTE occurred after a median of 3 L-ASP infusions (median time: day 19, from day -8 to day 49) with no

Table 2. Univariable analysis of risk factors for DVT/PE and CVT

	Univariable analysis of risk factors for any thrombosis			Univariable analysis of risk factors for DVT/PE			Univariable analysis of risk factors for CVT		
	OR	95% CI	P	OR	95% CI	P	OR	95% CI	P
Age	1.02	1.00-1.03	.03	1.03	1.00-1.04	.01	.99	.97-1.02	.57
Female	1.50	1.00-2.23	.05	1.32	.84-2.08	.23	1.54	.76-3.13	.23
BMI	1.04	1.00-1.08	.05	1.06	1.02-1.10	.01	.97	.90-1.05	.43
Smoking	.98	.92-1.04	.5	.73	.42-1.24	.24	1.10	.49-2.46	.82
Contraception	.63	.40-1.75	.63	.93	.40-2.14	.86	.58	.15-2.26	.43
B-cell phenotype	1.24	.82-1.88	.31	1.31	.82-2.09	.25	1.21	.58-2.52	.61
CNS involvement	.58	.23-1.49	.26	.46	.14-1.49	.19	.88	.20-3.77	.86
WBC count at diagnosis, $\times 10^9/L$.99	.99-1.00	.46	.99	.99-1.00	.14	1.00	.99-1.01	.34
Hemoglobin level at diagnosis, g/dL	1.05	.98-1.12	.19	1.00	.93-1.06	.93	1.17	1.03-1.33	.01
Platelet count at diagnosis/ $100 \times 10^9/L$	1.02	1.00-1.04	.03	1.02	1.00-1.04	.07	1.01	.98-1.05	.54
Prothrombin ratio at diagnosis, %	1.00	.99-1.02	.23	1.00	.99-1.03	.15	.99	.98-1.02	.95
Fibrinogen level at diagnosis, g/L	.99	.98-1.01	.77	.99	.98-1.01	.80	.97	.80-1.19	.80
Overt DIC	.31	.08-1.32	.11	.44	.10-1.86	.26	—	—	.99
Poor early PB blast clearance, %	.63	.37-1.07	.09	.68	.38-1.22	.20	.45	.16-1.31	.14

Platelet count at diagnosis is reported as the platelet count divided by 100.

DIC, diffuse intravascular coagulation.

difference between DVT/PE and CVT (median, day 18 for DVT/PE vs day 19 for CVT; $P = .6$). The median AT nadir was 51% (IQR, 45%-58%), with no difference between patients with and without thrombosis (Table 3). Prophylactic AT concentrates were administered in 64 (82%) and 620 (88%) patients, with and without thrombosis, respectively ($P = .05$; Table 3). After we excluded patients who did not receive L-ASP ($n = 8$), who developed thrombosis before L-ASP ($n = 8$), or both ($n = 2$), we found that AT supplementation did not have a significant impact on VTE (8% vs 14%; OR, 0.6; 95% CI, 0.28-1.1; $P = .1$; Figure 2A).

Fibrinogen concentrates were administered to 70 patients (9%) with hypofibrinogenemia, even though none of the patients had a grade 3 to 4 bleeding event (Table 3). Patients who received fibrinogen concentrates experienced VTE more often (17% vs 9%; OR, 2.2; 95% CI, 1.1-4.3; $P = .02$; Figure 2B). The prophylactic administration of FFP had no impact on VTE. Heparin was prophylactically administered in 485 patients (62%). Surprisingly, most patients (82%) who subsequently experienced VTE received heparin prophylaxis (13% vs 7% for those who did not receive heparin prophylaxis; OR, 1.9; 95% CI, 1-3.6; $P = .04$; Table 3; Figure 2C).

Table 3. Prophylactic measures in patients without and with VTE during induction

	All patients (n = 784)	No thrombosis during induction (n = 706)	Thrombosis during induction (n = 78)	P
L-ASP injections, n (IQR)	8 (5-8)	8 (5-8)	6 (3-8)	<.001
AT nadir, n (IQR)	51 (45-58)	51 (45-58)	51 (44-62)	.66
AT prophylaxis, n (%)	684 (87)	620 (88)	64 (82)	.05
FFP prophylaxis, n (%)	76 (10)	68 (10)	8 (10)	.82
Fibrinogen prophylaxis, n (%)	70 (9)	58 (8)	12 (15)	.02
Heparin prophylaxis, n (%)				
No	177 (23)	164 (23)	13 (17)	.04
Yes	485 (62)	421 (60)	64 (82)	—
Missing data	122 (15)	121 (17)	1 (1)	—

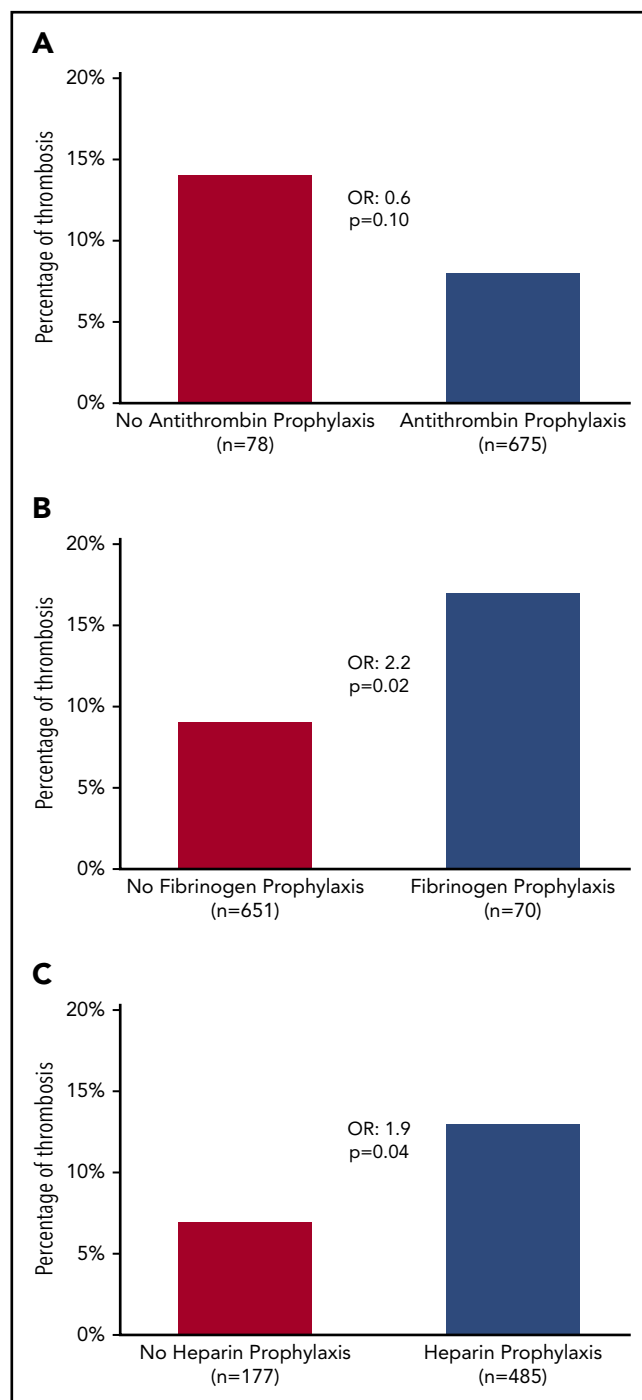


Figure 2. Incidence of thrombosis according to prophylactic measures. (A) AT. (B) Fibrinogen. (C) Heparin.

Although patients who received heparin prophylaxis also had a higher platelet count at diagnosis of ALL in comparison with those who did not (79 vs $59 \times 10^9/L$; $P = .05$), the association between heparin prophylaxis and an increased risk of VTE persisted after adjustment for platelet counts at diagnosis (supplemental Table 1). Specifically, there was no difference in the incidence of personal and familial thromboembolic events in patients who did or did not receive heparin prophylaxis. Patients who received heparin prophylaxis during induction had similar platelet counts during induction therapy with a similar number of

patients with platelets $<20 \times 10^9/L$ at any time ($P = .14$) and a similar number of days spent with platelets below that level ($P = .17$), and thus were not recommended for additional platelet transfusion. Patients who experienced grade 3 to 4 bleeding complications were less likely to receive heparin prophylaxis, but the result did not reach statistical significance (59% vs 74% of patients without bleeding complications; $P = .09$). Of interest, patients who received heparin prophylaxis with no AT prophylaxis (38 patients; 6%) were more likely to experience thrombosis (24%) in comparison with other patients (603 patients; 94%) who experienced 9.6% of the VTEs ($P = .02$; supplemental Table 2).

CVT occurred in 29 patients during induction therapy from days 1 to 31 with a median time to occurrence of 19 days from the beginning of induction therapy. All but 2 received IT injections during induction (2 patients received 1 IT, 11 received 2, and 14 received 3). Patients with CVT received fewer L-ASP infusions (median, 3 vs 8 for patients without thrombosis; $P < .001$), had thus a higher AT nadir (median, 60% vs 51% and 47% for patients without thrombosis and with DVP/PE, respectively; $P < .001$), and did not require supplementation as often (69% of patients vs 88% and 90% of patients without thrombosis and with DVP/PE, respectively; $P = .003$). CVT also occurred more often in patients receiving heparin prophylaxis (90% of patients vs 60% and 78% of patients without thrombosis and with DVP/PE, respectively; $P = .04$; supplemental Table 3).

Patients with VTE received fewer L-ASP infusions during induction therapy (median number of 6 vs 8 injections for those without VTE; $P < .001$; Table 3). The occurrence of DVT/PE or CVT during induction therapy had no impact on EFS or OS ($P = .47$ and $P = .56$, respectively; Figure 3). On the other hand, the number of L-ASP injections received during induction was associated with EFS (hazard ratio [HR], 0.8; 95% CI, 0.8-0.9; $P < .001$) and OS (HR, 0.8; 95% CI, 0.8-0.9; $P < .001$).

There was no association between VTE and other grade 3 and 4 toxicities, such as hypertriglyceridemia ($P = 0.99$), diabetes ($P = 0.99$), hepatotoxicity ($P = .8$), and pancreatitis ($P = .34$) during induction therapy.

Administration of L-ASP during subsequent phases of treatment

Patients who received L-ASP during subsequent consolidations did not have an increased risk of thrombosis in comparison with patients who did not receive L-ASP ($P = .61$; $P = .92$; and $P = .57$ during consolidation courses 1, 2, and 3, respectively). Also, the dose of L-ASP received during these treatment phases was not associated with an increased risk of thrombosis ($P = .77$; $P = .39$; and $P = .86$ during consolidation courses 1, 2, and 3, respectively).

Patients with standard-risk ALL ($n = 354$) and/or without a donor received late intensification therapy. Patients experiencing VTE before late intensification were less likely to receive L-ASP during this treatment phase (34 and 52 patients [65%] with VTE vs 265 and 302 patients [88%] without VTE; $P < .001$). Previous VTEs had no impact on the rate of VTEs during late intensification (OR, 1.8; 95% CI, 0.4-8.7; $P = .5$). Of the 34 patients with VTE before late intensification who were rechallenged with either *E coli* L-ASP or Erwinase L-ASP during late intensification,

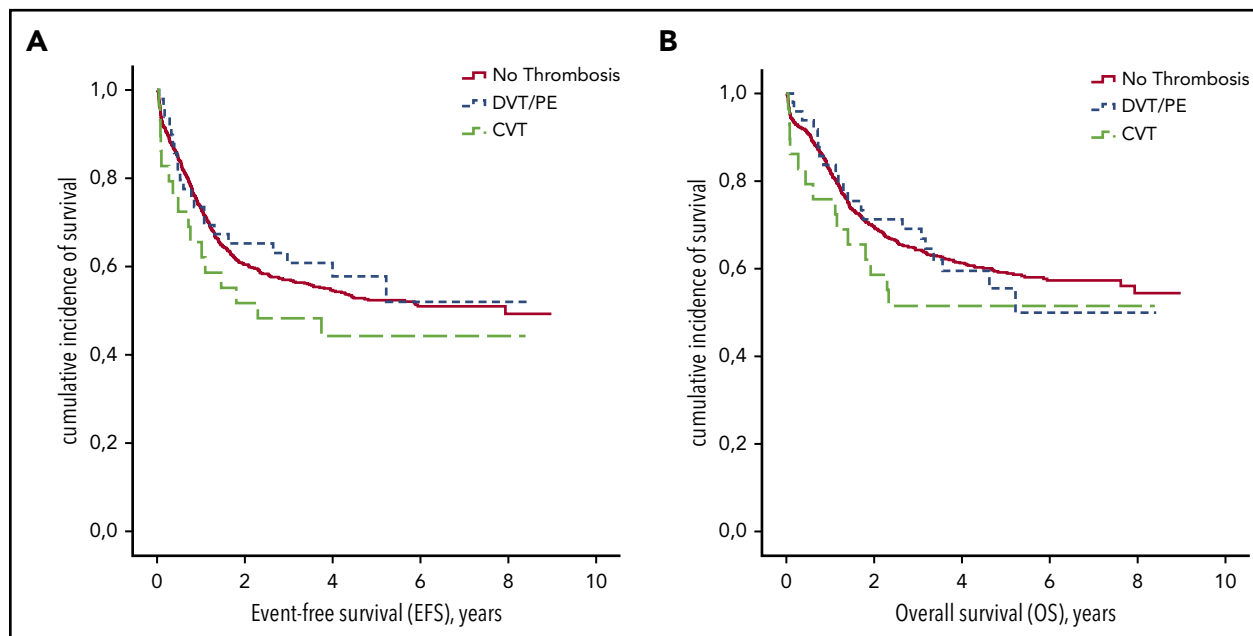


Figure 3. EFS and OS according to thrombosis during induction therapy. (A) EFS. (B) OS.

only 1 experienced VTE recurrence (3%). During late intensification, fewer patients received AT, FFP, fibrinogen concentrates, and heparin prophylaxis than during induction therapy (58% vs 87%, 2% vs 10%, 5% vs 9%, and 36% vs 62% during induction therapy, respectively). Prophylactic measures had no impact on the incidence of thrombosis during late intensification (supplemental Table 4).

Safety of the prophylactic strategy

Thirty-nine (5%) grade 3 to 4 bleeding complications were reported during the full treatment period, most of them (31 of 39 events, 80%) occurring during induction therapy (Figure 4A). Among them, digestive bleeding was the most frequent (14 of 39; 36%) followed by intracranial bleedings (12 of 39 events; 31%; Figure 4B). Of note, 5 of 12 (42%) of grade 3 and 4 intracranial bleedings were secondary to CVT. Neither patients who received AT concentrates and heparin prophylaxis (OR, 0.7; 95% CI, 0.3-1.8; $P = .4$; and OR, 0.5; 95% CI, 0.2-1.1; $P = .1$, respectively), nor patients with VTE experienced more grade 3 and 4 bleedings (6 of 112 vs 34 of 672 bleeding events; OR, 1.1; 95% CI, 0.4-2.6; $P = .9$).

Discussion

This study on thrombotic prophylaxis in adult ALL patients is based on the multicenter prospective GRAALL-2005 study. Although it was not powered to demonstrate the efficacy and safety of the prophylactic strategy, it describes the potential hazards of fibrinogen supplementation, whereas FFP and heparin seemed ineffective. Despite extensive AT supplementation, many patients experienced VTE. This prophylactic strategy was not associated with an increased hemorrhagic risk. In this study, the type of VTE (DVT/PE and CVT) did not have the same risk factors.

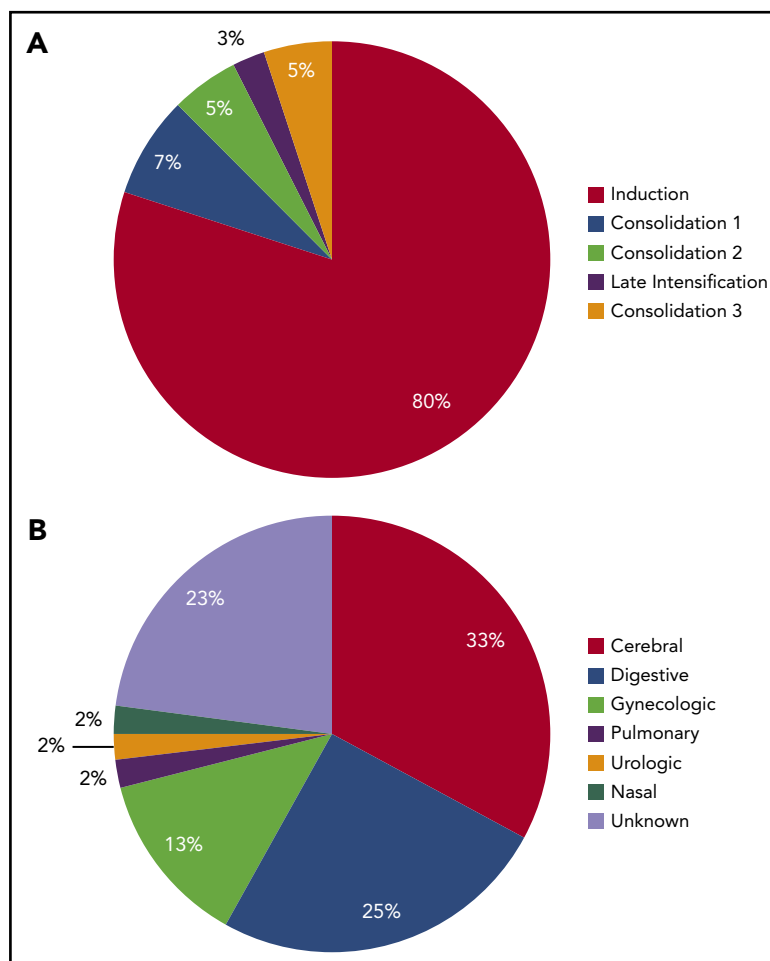
As shown by others, the rate of DVT was increased in our adult cohort in comparison with groups in pediatric studies that carried

similar rates of CVT.^{14-16,29-32} We found a near threefold increase in VTE in our study in comparison with previous data compiled from small retrospective studies. The prospective nature of our study enables the exhaustive identification of most VTEs. VTE may therefore be underrecognized in previous studies. In the literature, the risk of DVT/PE is associated with age, comorbidities, obesity, and placement of a central venous line (CVL).^{30,33,34} This last parameter could not be evaluated in our study because all patients had CVLs. Increased use of CVLs, which is recommended for all patients in our protocol, may have caused the higher thrombotic rate in our study as we observed 50 DVT of the upper limb, for which CVL is a recognized risk factor.³⁰ In contrast to DVT/PE, the only risk factor for CVT was hemoglobin levels at diagnosis. In the literature and in our study, most CVT occurred during intensive L-ASP treatment with fewer events occurring later on (3 of 32 events during subsequent phases).³⁵⁻³⁷

To date, AT supplementation is the most effective reported prophylactic measure to prevent thrombosis in this setting.^{22,23} In most clinical studies, AT supplementation was associated with a decreased incidence of thrombosis but randomized trials are lacking.^{18,24,25,38-40} In our study, despite extensive supplementation (87%), many patients experienced VTE, which did not completely prevent this risk. The lack of statistical power because of the low number of patients not receiving AT supplementation in our cohort may explain the lack of statistical difference. Moreover, this prophylactic strategy was safe and was not associated with an increased risk of severe bleeding. A substantial proportion of patients receiving AT supplementation still had AT levels lower than the cutoff target of 60%. A more rigorous supplementation may be of benefit to patients in preventing VTE. The threshold levels for AT supplementation should be evaluated prospectively.⁴¹ The benefit of using a higher threshold (>60%) for administering AT should be evaluated in this context.²⁵ A recent randomized trial showed that pediatric patients with an AT activity target of 80% experienced

Figure 4. Timing and type of grade 3 to 4 bleeding complications.

(A) Distribution of bleeding events according to treatment phase.
(B) Distribution of bleeding type.



a lower incidence of VTE than those who received unfractionated heparin (1.9% vs 8%; $P < .001$).⁴⁰ A systematic AT supplementation with high AT doses once a week or every day during L-ASP infusions has also been proposed.^{38,42} The cost effectiveness of this procedure remains to be determined. This systematic AT replacement strategy could be explored in patients at high risk of thrombosis risk (older age, higher BMI) and/or in those with higher circulating tissue factor which is found to be a highly relevant predictor factor for recurrent VTE in cancer patients.⁴³

The administration of fibrinogen concentrates in case of hypofibrinogenemia has seldom been reported in the literature.^{18,44,45} Herein, fibrinogen concentrates effectively increased fibrinogen levels but were associated with an increased risk for thrombosis (OR, 2.2; 95% CI, 1.1-4.3; $P = .02$). Fibrinogen concentrates should be restricted to severe but rare bleeding associated with hypofibrinogenemia. Prophylactic supplementation with FFP had no impact on VTE. In this setting, it has been previously evaluated in 2 studies including 240 and 719 patients, respectively, with only a moderate impact in 1 of them (6% of VTE in those who received FFP vs 19% in those who did not), whereas the other study did not show any difference.^{17,20} In any case, a hypothetical role on the prevention of thrombosis remains to be explained, because it does not modify plasmatic AT levels.^{18,19,46} Moreover, using FFP may lower the activity of L-ASP on lymphoblasts related to exogenous asparagine depletion.²¹

The impact of heparin prophylaxis on reducing the incidence of thrombosis in ALL patients with L-ASP-containing regimens is debated.^{40,47,48} In our study, even though all patients were supposed to receive heparin prophylaxis, all did not receive such therapy. We observe that it was more frequently administered to patients with less intense thrombocytopenia. After adjustment for platelet counts at diagnosis, heparin prophylaxis was surprisingly associated with an increased risk of VTE. We have no clear explanation for this observation, and the lack of details regarding the modality of heparin prophylaxis in our study (type, dose, and therapeutic level monitoring) limits the generalization of this result. Patients deemed to be at increased bleeding risk and thus at decreased risk of thrombosis, may have received less heparin prophylaxis. The extensive use of unfractionated heparin in our study may also explain the lack of efficacy of heparin prophylaxis that we observed. Given the severe AT depletion induced by asparaginase, unfractionated heparin is probably not the most effective anticoagulant in this setting, whereas some data support the use of LMWH (3.5% of VTE vs 8% in those who received unfractionated heparin).⁴⁰ The superior efficacy of LMWH in comparison with unfractionated heparin should be evaluated prospectively in adult patients. Direct anticoagulants have yet to be evaluated in clinical studies, especially regarding bleeding complications, because they may interact with other medications.⁴⁹ A randomized trial comparing apixaban to standard of care for prevention of thrombotic events in children is currently enrolling pediatric patients (PREVAPIX-ALL).

VTEs were less frequently observed in subsequent phases of treatment. During late intensification, the incidence of VTE was only 2.5%, despite the use of an identical schedule of L-ASP protocol as during induction phase and the lower rate of prophylactic measures administered to the patients. This seems to indicate that thrombosis during ALL is related, not only to treatment with L-ASP, but also to the disease itself, as concluded by others.^{9,10} It is also possible that silent inactivation of L-ASP during late intensification decreased the rate of VTE.^{50,51} The potential association between asparaginase activity and risk of thrombosis will be studied in GRAALL-2014, currently in the enrolling phase, where these levels are prospectively recorded. Because of this lower risk of thrombosis during late intensification, L-ASP has been reintroduced safely, especially among 34 patients who experienced VTE before late intensification in which only 1 recurrence of VTE was observed after L-ASP rechallenge.¹⁶ Reexposure to L-ASP appears therefore to be safe in patients who experience VTE, provided they receive anticoagulation therapy.⁵²

Of note, *E coli* L-ASP used in this study is no longer available in the United States, and pegylated L-ASP is more extensively used in current pediatrics-inspired protocols. The latter formulation of L-ASP will probably be used in the future GRAALL-2020 protocol. Thromboembolism remains a major cause of toxicity in adult patients receiving pegylated L-ASP, with 5% to 18% of patients experiencing such a complication.^{32,53-59} The rate of thrombotic complications appears similar in cohorts comparing native and pegylated L-ASP.^{58,60} Even though lowering pegylated L-ASP doses reduces global toxicity with a similar efficacy, the rate of thromboembolic complications is unchanged.^{55,61} The impact of prophylactic AT supplementation remains to be determined in this setting.⁵³ It is of the utmost importance to evaluate prophylactic measures against thromboembolic complications in this setting.

In summary, in ALL patients receiving L-ASP therapy, extensive AT prophylaxis did not completely prevent the risk of VTE. Maintaining higher AT levels in patients at increased risk for VTE should be evaluated. Fibrinogen concentrates increase the risk of thrombosis and should be restricted to patients with hemorrhage. The impact of heparin prophylaxis must be reevaluated, as it was associated with an increased risk of VTE in our study. L-ASP can be safely reintroduced in patients who experienced VTE during induction. This large descriptive study could be the

basis for future randomized studies evaluating new antithrombotic prevention measures in the GRAALL protocols.

Acknowledgments

This study was supported by the Regional Clinical Research Office, Paris, and by grants from the Programme Hospitalier de Recherche Clinique (PHRC), French Ministry of Health, and Institut National du Cancer in France (PHRC AOM 04144-P040429), and the Swiss State Secretariat for Education, Research, and Innovation (SERI; Bern, Switzerland).

Authorship

Contribution: P.C., F.H., N.I., H.D., N.B., M.H.-B. were involved in the conception and design of the study; C.O., N.B., and M.H.-B. analyzed and interpreted the data; and all authors were involved in the collection and assembly of data, in the writing the manuscript, and in the final approval of the manuscript.

Conflict-of-interest disclosure: M.H.-B. had a consultant or advisory role for Erytech. C.O. received honoraria from Incyte and Novartis and M.H.-B. from Jazz Pharmaceuticals. The remaining authors declare no competing financial interests.

The members of the Group for Research on Adult Acute Lymphoblastic Leukemia (GRAALL) are listed in the supplemental appendix.

ORCID profiles: C.O., 0000-0002-8717-0824; S.C., 0000-0003-0457-2252; Y.C., 0000-0001-9341-8104; H.D., 0000-0002-5454-6768.

Correspondence: Mathilde Hunault-Berger, CHU d'Angers, 4 Rue Larrey, 49933 Angers Cedex 9, France; e-mail: mahunault@chu-angers.fr.

Footnotes

Submitted 15 January 2020; accepted 1 April 2020; prepublished online on *Blood* First Edition 22 April 2020. DOI 10.1182/blood.2020004919.

*N.B. and M.H.-B. contributed equally to this study.

For original data, please e-mail the corresponding author.

The online version of this article contains a data supplement.

There is a *Blood* Commentary on this article in this issue.

The publication costs of this article were defrayed in part by page charge payment. Therefore, and solely to indicate this fact, this article is hereby marked "advertisement" in accordance with 18 USC section 1734.

REFERENCES

- Boissel N, Auclerc MF, Lhéritier V, et al. Should adolescents with acute lymphoblastic leukemia be treated as old children or young adults? Comparison of the French FRALLE-93 and LALA-94 trials. *J Clin Oncol*. 2003;21(5):774-780.
- Storring JM, Minden MD, Kao S, et al. Treatment of adults with BCR-ABL negative acute lymphoblastic leukaemia with a modified paediatric regimen. *Br J Haematol*. 2009;146(1):76-85.
- DeAngelo DJ, Stevenson KE, Dahlberg SE, et al. Long-term outcome of a pediatric-inspired regimen used for adults aged 18-50 years with newly diagnosed acute lymphoblastic leukemia. *Leukemia*. 2015;29(3):526-534.
- Huguet F, Chevret S, Leguay T, et al; Group of Research on Adult ALL (GRAALL). Intensified therapy of acute lymphoblastic leukemia in adults: report of the randomized GRAALL-2005 clinical trial. *J Clin Oncol*. 2018;36(24):2514-2523.
- Clavell LA, Gelber RD, Cohen HJ, et al. Four-agent induction and intensive asparaginase therapy for treatment of childhood acute lymphoblastic leukemia. *N Engl J Med*. 1986;315(11):657-663.
- Broome JD. Studies on the mechanism of tumor inhibition by L-asparaginase: effects of the enzyme on asparagine levels in the blood, normal tissues, and 6C3HED lymphomas of mice: differences in asparagine formation and utilization in asparaginase-sensitive and -resistant lymphoma cells. *J Exp Med*. 1968;127(6):1055-1072.
- Asselin BL, Ryan D, Frantz CN, et al. In vitro and in vivo killing of acute lymphoblastic leukemia cells by L-asparaginase. *Cancer Res*. 1989;49(15):4363-4368.
- De Stefano V, Sorà F, Rossi E, et al. The risk of thrombosis in patients with acute leukemia: occurrence of thrombosis at diagnosis and during treatment. *J Thromb Haemost*. 2005;3(9):1985-1992.
- Giordano P, Del Vecchio GC, Santoro N, et al. Thrombin generation in children with acute lymphoblastic leukemia: effect of leukemia immunophenotypic subgroups. *Pediatr Hematol Oncol*. 2000;17(8):667-672.

10. Giordano P, Molinari AC, Del Vecchio GC, et al. Prospective study of hemostatic alterations in children with acute lymphoblastic leukemia. *Am J Hematol*. 2010;85(5):325-330.
11. Schneider P, Van Dreden P, Rousseau A, et al. Increased levels of tissue factor activity and procoagulant phospholipids during treatment of children with acute lymphoblastic leukaemia. *Br J Haematol*. 2010;148(4):582-592.
12. Appel IM, van Kessel-Bakvis C, Stigter R, Pieters R. Influence of two different regimens of concomitant treatment with asparaginase and dexamethasone on hemostasis in childhood acute lymphoblastic leukemia. *Leukemia*. 2007;21(11):2377-2380.
13. Homans AC, Rybak ME, Baglini RL, Tiarks C, Steiner ME, Forman EN. Effect of L-asparaginase administration on coagulation and platelet function in children with leukemia. *J Clin Oncol*. 1987;5(5):811-817.
14. Caruso V, Iacoviello L, Di Castelnuovo A, et al. Thrombotic complications in childhood acute lymphoblastic leukemia: a meta-analysis of 17 prospective studies comprising 1752 pediatric patients. *Blood*. 2006;108(7):2216-2222.
15. Caruso V, Iacoviello L, Di Castelnuovo A, Storti S, Donati MB. Venous thrombotic complications in adults undergoing induction treatment for acute lymphoblastic leukemia: results from a meta-analysis. *J Thromb Haemost*. 2007;5(3):621-623.
16. Grace RF, Dahlberg SE, Neuberg D, et al. The frequency and management of asparaginase-related thrombosis in paediatric and adult patients with acute lymphoblastic leukaemia treated on Dana-Farber Cancer Institute consortium protocols. *Br J Haematol*. 2011;152(4):452-459.
17. Lauw MN, Van der Holt B, Middeldorp S, Meijers JC, Cornelissen JJ, Biemond BJ. Venous thromboembolism in adults treated for acute lymphoblastic leukaemia: effect of fresh frozen plasma supplementation. *Thromb Haemost*. 2013;109(4):633-642.
18. Hunault-Berger M, Chevallier P, Delain M, et al; GOELAMS (Groupe Ouest-Est des Leucémies Aiguës et Maladies du Sang). Changes in antithrombin and fibrinogen levels during induction chemotherapy with L-asparaginase in adult patients with acute lymphoblastic leukemia or lymphoblastic lymphoma: use of supportive coagulation therapy and clinical outcome: the CAPELAL study. *Haematologica*. 2008;93(10):1488-1494.
19. Nowak-Göttl U, Rath B, Binder M, et al. Inefficacy of fresh frozen plasma in the treatment of L-asparaginase-induced coagulation factor deficiencies during ALL induction therapy. *Haematologica*. 1995;80(5):451-453.
20. Abbott LS, Deevska M, Fernandez CV, et al. The impact of prophylactic fresh-frozen plasma and cryoprecipitate on the incidence of central nervous system thrombosis and hemorrhage in children with acute lymphoblastic leukemia receiving asparaginase. *Blood*. 2009;114(25):5146-5151.
21. Steiner M, Attarbaschi A, Haas OA, Kastner U, Gadner H, Mann G. Fresh frozen plasma contains free asparagine and may replace the plasma asparagine pool during L-asparaginase therapy. *Leukemia*. 2008;22(6):1290.
22. Gugliotta L, D'Angelo A, Mattioli Belmonte M, et al. Hypercoagulability during L-asparaginase treatment: the effect of antithrombin III supplementation in vivo. *Br J Haematol*. 1990;74(4):465-470.
23. Nowak-Göttl U, Kuhn N, Wolff JE, et al. Inhibition of hypercoagulation by antithrombin substitution in E. coli L-asparaginase-treated children. *Eur J Haematol*. 1996;56(1-2):35-38.
24. Elliott MA, Wolf RC, Hook CC, et al. Thromboembolism in adults with acute lymphoblastic leukemia during induction with L-asparaginase-containing multi-agent regimens: incidence, risk factors, and possible role of antithrombin. *Leuk Lymphoma*. 2004;45(8):1545-1549.
25. Farrell K, Fyfe A, Allan J, Tait RC, Leach M. An antithrombin replacement strategy during asparaginase therapy for acute lymphoblastic leukemia is associated with a reduction in thrombotic events. *Leuk Lymphoma*. 2016;57(11):2568-2574.
26. Maury S, Chevret S, Thomas X, et al; for GRAALL. Rituximab in B-lineage adult acute lymphoblastic leukemia. *N Engl J Med*. 2016;375(11):1044-1053.
27. Paillasa J, Leguay T, Thomas X, et al. Monitoring of asparagine depletion and anti-L-asparaginase antibodies in adult acute lymphoblastic leukemia treated in the pediatric-inspired GRAALL-2005 trial. *Blood Cancer J*. 2018;8(5):45.
28. Toh CH, Hoots WK; SSC on Disseminated Intravascular Coagulation of the ISTH. The scoring system of the Scientific and Standardisation Committee on Disseminated Intravascular Coagulation of the International Society on Thrombosis and Haemostasis: a 5-year overview. *J Thromb Haemost*. 2007;5(3):604-606.
29. Tuckuviene R, Ranta S, Albertsen BK, et al. Prospective study of thromboembolism in 1038 children with acute lymphoblastic leukemia: a Nordic Society of Pediatric Hematology and Oncology (NOPHO) study. *J Thromb Haemost*. 2016;14(3):485-494.
30. Ku GH, White RH, Chew HK, Harvey DJ, Zhou H, Wun T. Venous thromboembolism in patients with acute leukemia: incidence, risk factors, and effect on survival. *Blood*. 2009;113(17):3911-3917.
31. Athale UH, Siciliano SA, Crowther M, Barr RD, Chan AK. Thromboembolism in children with acute lymphoblastic leukaemia treated on Dana-Farber Cancer Institute protocols: effect of age and risk stratification of disease. *Br J Haematol*. 2005;129(6):803-810.
32. Rank CU, Toft N, Tuckuviene R, et al. Thromboembolism in acute lymphoblastic leukemia: results of NOPHO ALL2008 protocol treatment in patients aged 1 to 45 years [published correction appears in *Blood*. 2020;135(10):780.]. *Blood*. 2018;131(22):2475-2484.
33. Prasas S, Carmona R, Ji L, et al. Obesity and risk for venous thromboembolism from contemporary therapy for pediatric acute lymphoblastic leukemia. *Thromb Res*. 2018;165:44-50.
34. Mateos MK, Trahair TN, Mayoh C, et al. Risk factors for symptomatic venous thromboembolism during therapy for childhood acute lymphoblastic leukemia. *Thromb Res*. 2019;178:132-138.
35. Ranta S, Tuckuviene R, Mäkipernaa A, et al. Cerebral sinus venous thromboses in children with acute lymphoblastic leukaemia: a multi-centre study from the Nordic Society of Paediatric Haematology and Oncology. *Br J Haematol*. 2015;168(4):547-552.
36. Zuurbier SM, Lauw MN, Coutinho JM, et al. Clinical course of cerebral venous thrombosis in adult acute lymphoblastic leukemia. *J Stroke Cerebrovasc Dis*. 2015;24(7):1679-1684.
37. Duarte X, Esteves S, Neto AM, Pereira F. Incidence and risk factors for Central Nervous System thrombosis in paediatric acute lymphoblastic leukaemia during intensive asparaginase treatment: a single-centre cohort study. *Br J Haematol*. 2016;174(2):280-291.
38. Mitchell L, Andrew M, Hanna K, et al. Trend to efficacy and safety using antithrombin concentrate in prevention of thrombosis in children receiving L-asparaginase for acute lymphoblastic leukemia. Results of the PAARKA study. *Thromb Haemost*. 2003;90(2):235-244.
39. Couturier MA, Huguet F, Chevallier P, et al. Cerebral venous thrombosis in adult patients with acute lymphoblastic leukemia or lymphoblastic lymphoma during induction chemotherapy with L-asparaginase: The GRAALL experience. *Am J Hematol*. 2015;90(11):986-991.
40. Greiner J, Schrappe M, Claviez A, et al; THROMBOTECT Study Investigators. THROMBOTECT: a randomized study comparing low molecular weight heparin, antithrombin and unfractionated heparin for thromboprophylaxis during induction therapy of acute lymphoblastic leukemia in children and adolescents. *Haematologica*. 2019;104(4):756-765.
41. Barreto JN, McCullough KB, Peskey CS, et al. Safety and feasibility of lower antithrombin replacement targets in adult patients with hematological malignancies receiving asparaginase therapy. *Leuk Lymphoma*. 2017;58(11):2588-2597.
42. Mazzucconi MG, Gugliotta L, Leone G, et al. Antithrombin III infusion suppresses the hypercoagulable state in adult acute lymphoblastic leukaemia patients treated with a low dose of Escherichia coli L-asparaginase: a GIMEMA study. *Blood Coagul Fibrinolysis*. 1994;5(1):23-28.
43. Khorana AA, Kamphuisen PW, Meyer G, et al. Tissue factor as a predictor of recurrent venous thromboembolism in malignancy: biomarker analyses of the CATCH trial. *J Clin Oncol*. 2017;35(10):1078-1085.
44. Gollop ND, Chilcott J, Benton A, Rayment R, Jones J, Collins PW. National audit of the use of fibrinogen concentrate to correct hypofibrinogenemia. *Transfus Med*. 2012;22(5):350-355.

45. Giordano P, Luciani M, Grassi M, De Leonardis F, Coletti V, Santoro N. Supplementation of fibrinogen concentrate in children with severe acquired hypofibrinogenaemia during chemotherapy for acute lymphoblastic leukaemia: our experience. *Blood Transfus.* 2014; 12(suppl 1):s156-s157.
46. Halton JM, Mitchell LG, Vegh P, Eves M, Andrew ME. Fresh frozen plasma has no beneficial effect on the hemostatic system in children receiving L-asparaginase. *Am J Hematol.* 1994;47(3):157-161.
47. Meister B, Kropshofer G, Klein-Franke A, Strasak AM, Hager J, Streif W. Comparison of low-molecular-weight heparin and antithrombin versus antithrombin alone for the prevention of symptomatic venous thromboembolism in children with acute lymphoblastic leukemia. *Pediatr Blood Cancer.* 2008;50(2): 298-303.
48. Sibai H, Seki JT, Wang TQ, et al. Venous thromboembolism prevention during asparaginase-based therapy for acute lymphoblastic leukemia. *Curr Oncol.* 2016;23(4): e355-e361.
49. Kuhle S, Lau A, Bajzar L, et al. Comparison of the anticoagulant effect of a direct thrombin inhibitor and a low molecular weight heparin in an acquired antithrombin deficiency in children with acute lymphoblastic leukaemia treated with L-asparaginase: an in vitro study. *Br J Haematol.* 2006;134(5):526-531.
50. Woo MH, Hak LJ, Storm MC, et al. Hypersensitivity or development of antibodies to asparaginase does not impact treatment outcome of childhood acute lymphoblastic leukemia. *J Clin Oncol.* 2000;18(7): 1525-1532.
51. Vrooman LM, Stevenson KE, Supko JG, et al. Postinduction dexamethasone and individualized dosing of Escherichia coli L-asparaginase each improve outcome of children and adolescents with newly diagnosed acute lymphoblastic leukemia: results from a randomized study. Dana-Farber Cancer Institute ALL Consortium Protocol 00-01. *J Clin Oncol.* 2013;31(9):1202-1210.
52. Qureshi A, Mitchell C, Richards S, Vora A, Goulden N. Asparaginase-related venous thrombosis in UKALL 2003: re-exposure to asparaginase is feasible and safe. *Br J Haematol.* 2010;149(3):410-413.
53. Chen J, Ngo D, Aldoss I, Shayani S, Tsai NC, Pullarkat V. Antithrombin supplementation did not impact the incidence of pegylated asparaginase-induced venous thromboembolism in adults with acute lymphoblastic leukemia. *Leuk Lymphoma.* 2019;60(5):1187-1192.
54. Aldoss I, Douer D, Behrendt CE, et al. Toxicity profile of repeated doses of PEG-asparaginase incorporated into a pediatric-type regimen for adult acute lymphoblastic leukemia. *Eur J Haematol.* 2016;96(4):375-380.
55. Derman BA, Streck M, Wynne J, et al. Efficacy and toxicity of reduced vs. standard dose pegylated asparaginase in adults with Philadelphia chromosome-negative acute lymphoblastic leukemia. *Leuk Lymphoma.* 2020; 61(3):614-622.
56. Hanbali A, Kotb A, El Fakih R, et al. Improved outcome of a pediatric-inspired protocol for high-risk adolescent and young adult acute lymphoblastic leukemia patients using peg-asparaginase and escalating dose of methotrexate: tolerability and outcome. *Clin Lymphoma Myeloma Leuk.* 2019;19(10):670-677.
57. Patel B, Kirkwood AA, Dey A, et al. Pegylated-asparaginase during induction therapy for adult acute lymphoblastic leukaemia: toxicity data from the UKALL14 trial. *Leukemia.* 2017; 31(1):58-64.
58. Ribera JM, Morgades M, Montesinos P, et al; PETHEMA Group, Spanish Society of Hematology. Efficacy and safety of native versus pegylated Escherichia coli asparaginase for treatment of adults with high-risk, Philadelphia chromosome-negative acute lymphoblastic leukemia. *Leuk Lymphoma.* 2018;59(7): 1634-1643.
59. Stock W, Luger SM, Advani AS, et al. A pediatric regimen for older adolescents and young adults with acute lymphoblastic leukemia: results of CALGB 10403 [published correction appears in *Blood.* 2019;134(13): 1111]. *Blood.* 2019;133(14):1548-1559.
60. Place AE, Stevenson KE, Vrooman LM, et al. Intravenous pegylated asparaginase versus intramuscular native Escherichia coli L-asparaginase in newly diagnosed childhood acute lymphoblastic leukaemia (DFCI 05-001): a randomised, open-label phase 3 trial. *Lancet Oncol.* 2015;16(16):1677-1690.
61. Albertsen BK, Grell K, Abrahamsson J, et al. Intermittent versus continuous PEG-asparaginase to reduce asparaginase-associated toxicities: a NOPHO ALL2008 randomized study. *J Clin Oncol.* 2019;37(19): 1638-1646.